

**THE PORTUGUESE AMERICAN CITIZENSHIP PROJECT**  
**A NON-PARTISAN INITIATIVE TO PROMOTE CITIZENSHIP AND CIVIC INVOLVEMENT**



**ST. FRANCIS XAVIER PARISH**  
**EAST PROVIDENCE, RHODE ISLAND**

**EVALUATION**  
**OF**  
**THE 2008 ELECTIONS**

**February 25, 2010**

**SUPPORTED BY THE**  
**LUSO-AMERICAN**  
**FOUNDATION**

# REPORT CONTENTS

- **STATISTICS AND SUMMARY OF WORK** 3
- **RESULTS** 4
- **RECOMMENDATIONS** 8
- **APPENDIX** 10

## KEY STATISTICS

- **Number of Members in Rhode Island: 3,855**
- **Heads of Household registered to vote in Rhode Island: 1,594 (41% of all members)**
- **All Household Members registered to vote in Rhode Island: 2,390**
- **Heads of Household voter turnout in March 2008: 47% (statewide turnout 31%)**
- **Heads of Household voter turnout\* in September 2008 – 24% (statewide turnout 9%)**
- **Heads of Household voter turnout in November 2008 – 78% (statewide turnout 68%)**

## SUMMARY OF WORK

St. Francis Xavier has been an active participant in the Portuguese American Citizenship Project since 2006.

For the 2008 September Statewide Primary Elections and the November Presidential Elections, postcards in Portuguese and English were sent to every registered voter in the parish reminding them of the date, location, and polling hours for each election.

---

\* Voter turnout is the number of citizens voting in an election divided by the total number of citizens registered to vote. Voter turnout for each election is based on Rhode Island residents only.

## RESULTS

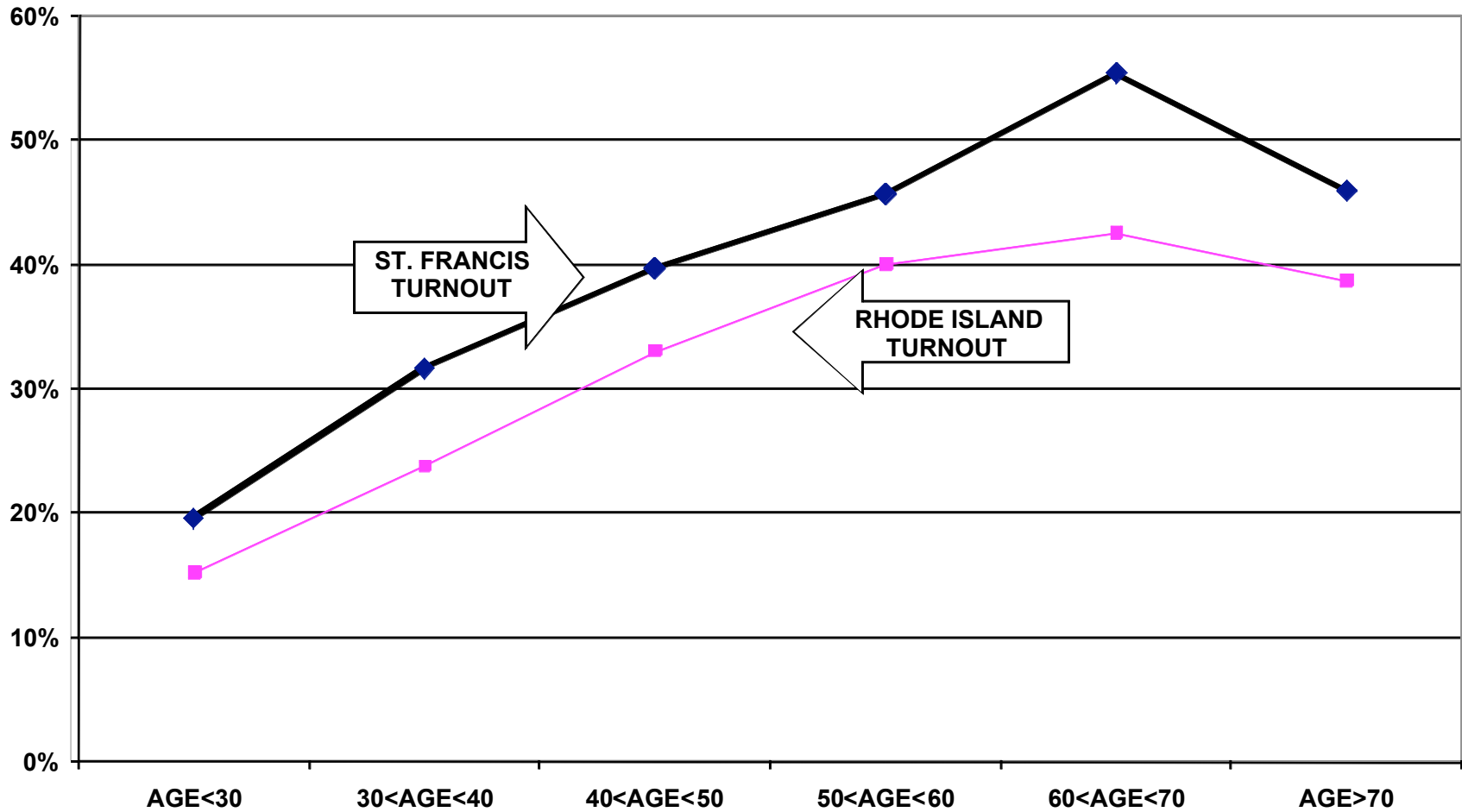
St. Francis Xavier's heads of household voter turnout was higher than the statewide turnout in the 2008 September Statewide Primary Election and the November Presidential Election. Heads of household turnout for the September Statewide Primary Elections was 24%, as compared to the state turnout of 9%. St. Francis Xavier's heads of household turnout for the November Presidential Election was 78%, as compared to the state turnout of 68%.

Voter turnout is not uniform across age groups. Voters under 30 years of age and even those between 30 and 40 years old had lower turnout rates than the older voters. This is true among all registered voters associated with the parish and among registered voters in the community at large.

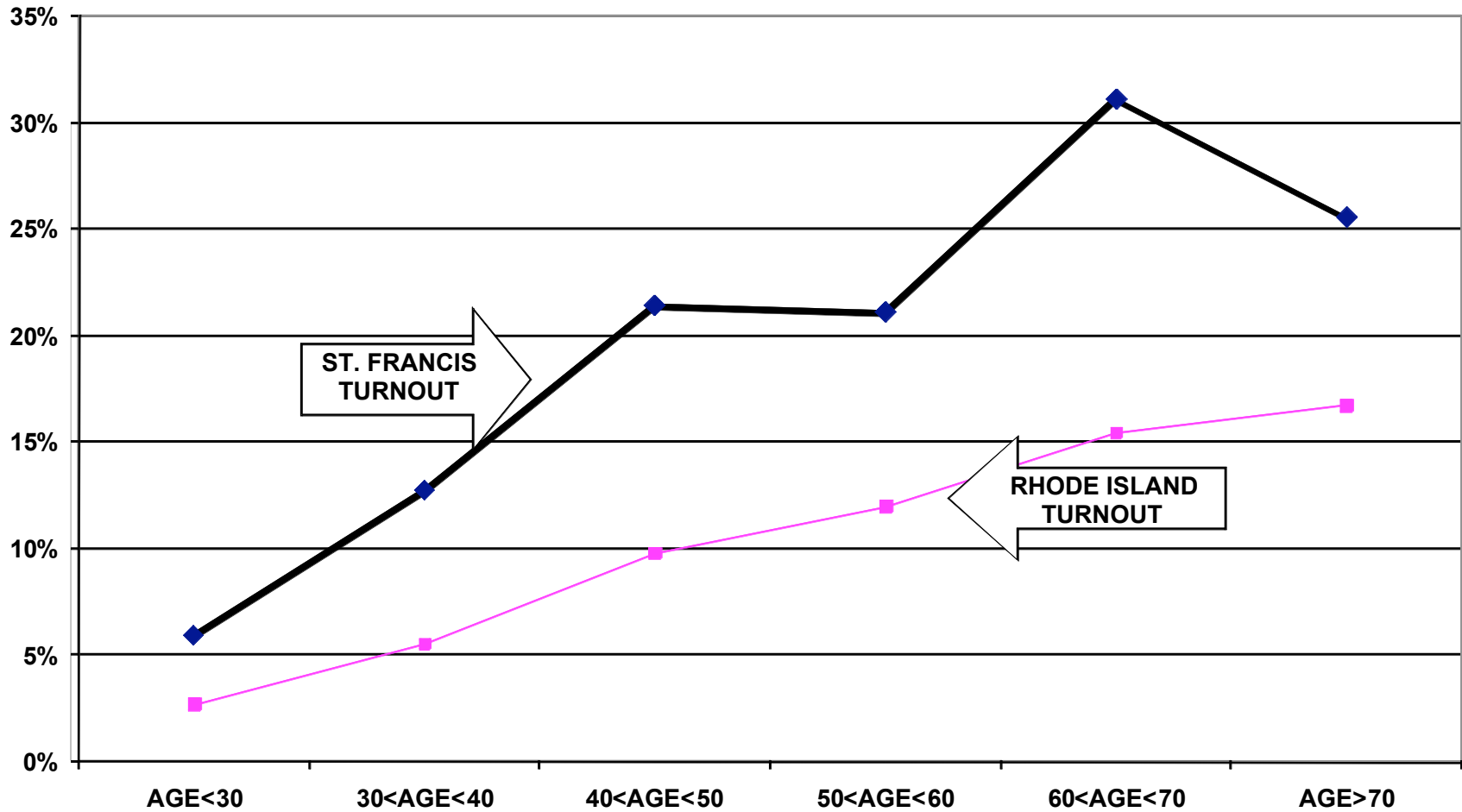
For example, registered voters that are associated with St. Francis Xavier under 30 years old had a 6% turnout rate in the September Statewide Primary elections, while those between 60 and 70 years old had a 31% turnout rate. For the November Presidential elections, the under 30 year-old associated voters had a 56% turnout rate, compared to an 84% turnout rate among parishioners between 60 and 70 years old.

The following graphs for the 2008 March, September, and November elections illustrate the relationship between turnout rates and age. These graphs refer to all family members associated with the parish, not just heads of household.

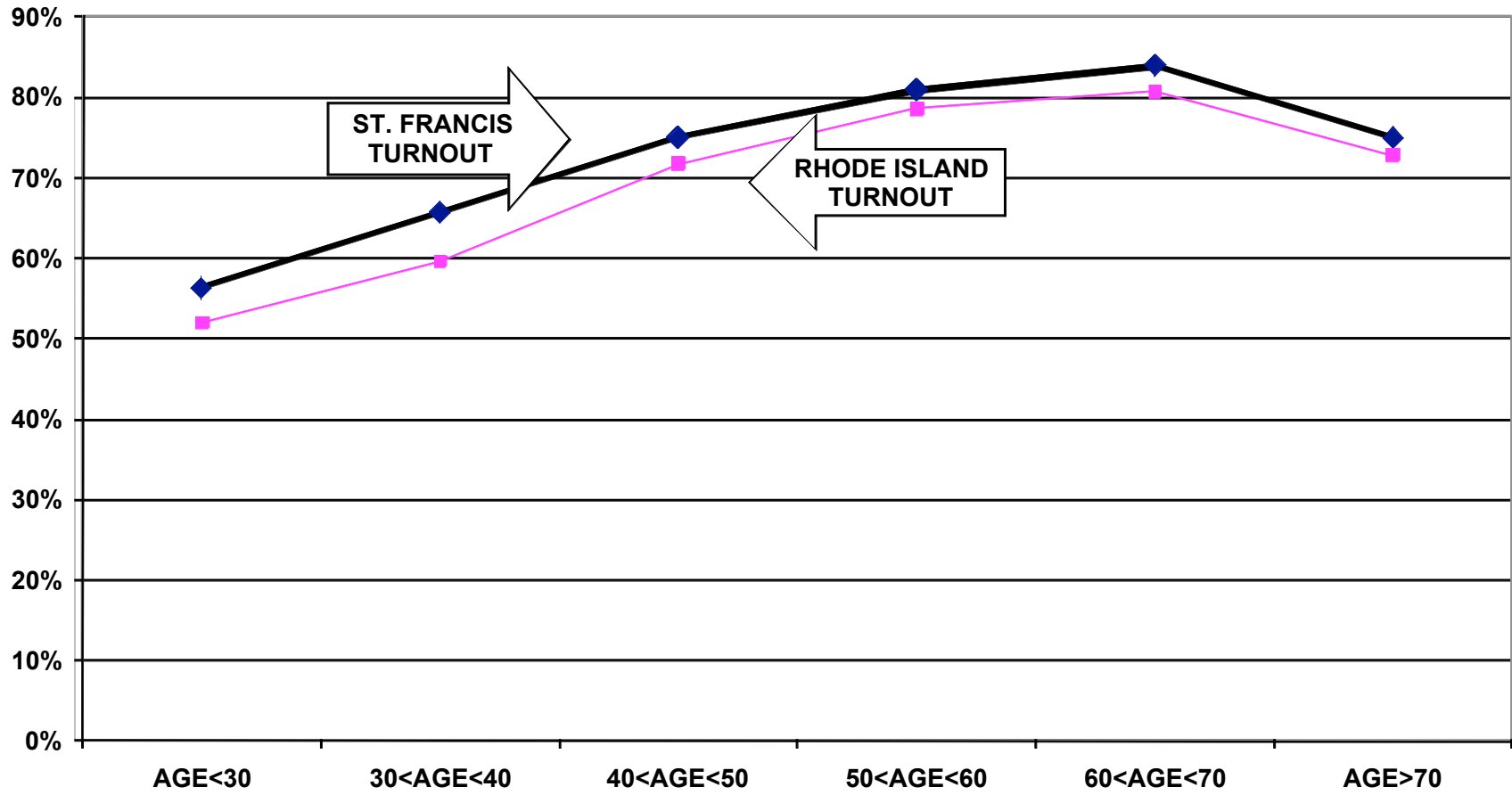
### TURNOUT BY AGE MARCH 2008 ST. FRANCIS XAVIER ALL HOUSEHOLD MEMBERS



### TURNOUT BY AGE SEPTEMBER 2008 ST. FRANCIS XAVIER ALL HOUSEHOLD MEMBERS



### TURNOUT BY AGE NOVEMBER 2008 ST. FRANCIS XAVIER ALL HOUSEHOLD MEMBERS



## RECOMMENDATIONS

- The parish must determine if and how it will provide funding for the costs of participation in the Citizenship Project. The Luso American Foundation has completed 10 years of financial support for the Project but will terminate this support for 2009 and beyond. In 2009, the Project will continue to provide data processing and assist in the preparation of voter cards. With a mailing permit, the cost of printing and mailing the cards for a September Primary, and November General elections is approximately \$1,300.
- If the parish cannot provide the financial support for this mailing and/or cannot accomplish the logistics of printing and mailing the voter cards, interested members of the community should examine the accomplishments of the past ten years and determine how to build on these achievements using alternative methods of promoting civic participation.



# APPENDIX

- Historical Data 10
- Registered Voter Turnout Bar Graph 11
- Difference in Voter Turnout Bar Graph 12
- Registered Voters vs. Actual Voters March 2008 Bar Graph 13
- Registered Voters vs. Actual Voters September 2008 Bar Graph 14
- Registered Voters vs. Actual Voters November 2008 Bar Graph 15

**HISTORICAL DATA: ST. FRANCIS XAVIER PARISH  
REGISTRATION - VOTING**

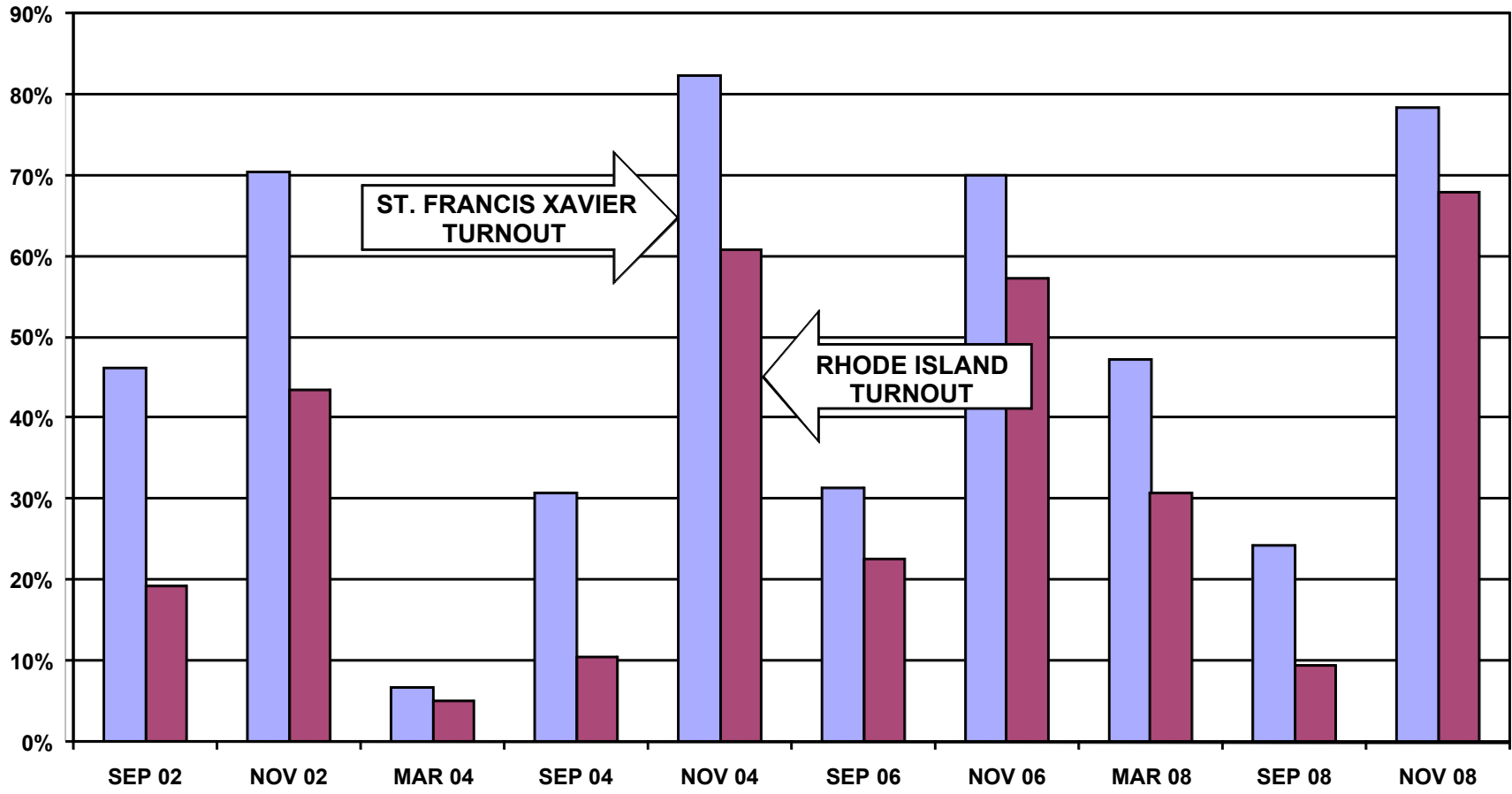
<b>MEMBERS</b>	<b>3,855</b>	
<b>MEMBERS REGISTERED TO VOTE IN STATE OF RHODE ISLAND</b>	<b>1,594</b>	<b>HEADS OF HOUSEHOLD</b>
	<b>2,390</b>	<b>ALL FAMILY MEMBERS</b>

**VOTING PERFORMANCE OF RHODE ISLAND RESIDENTS**

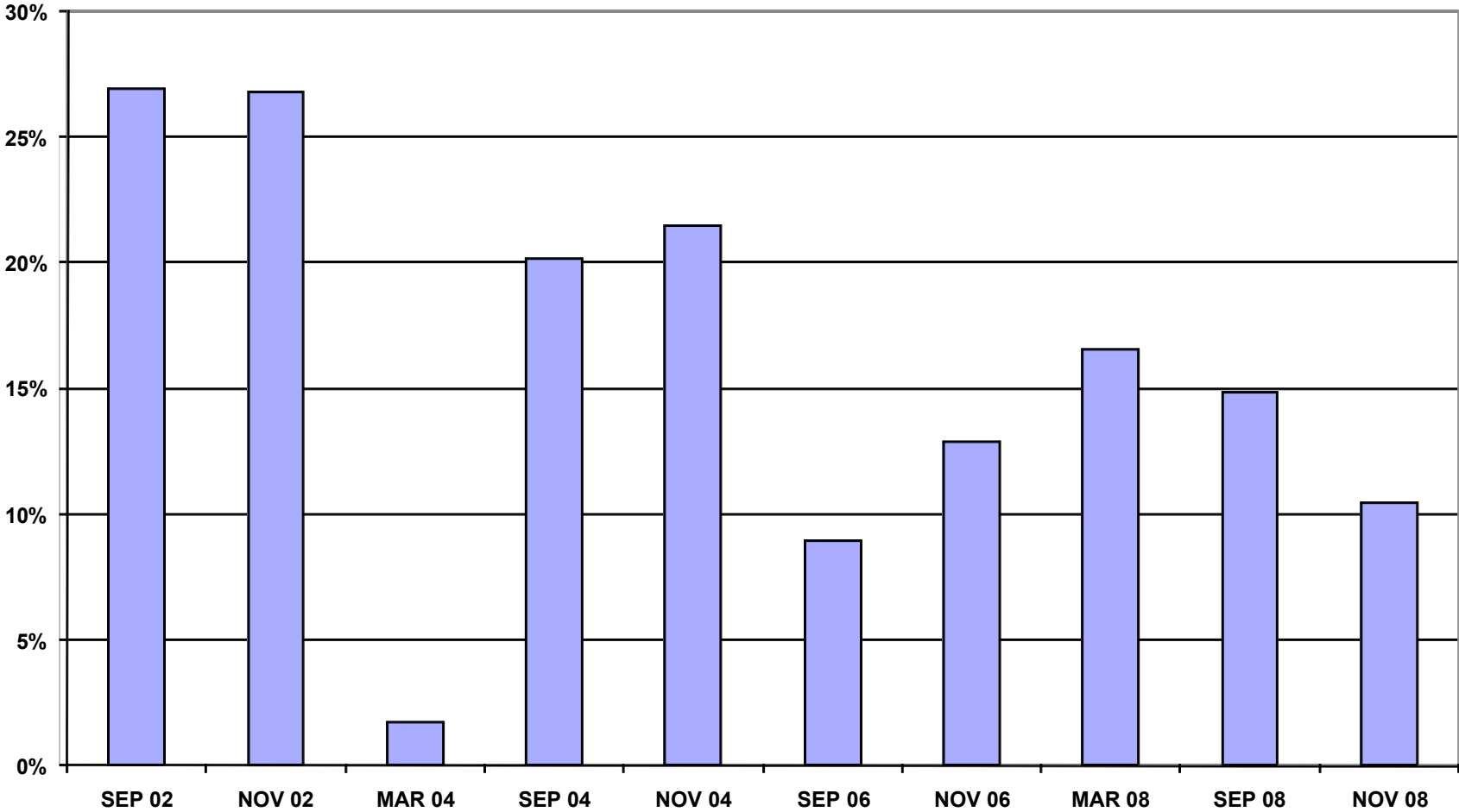
<b>HEADS OF HOUSEHOLD</b>		<b>AS PERCENT OF ALL REGISTERED MEMBERS ELIGIBLE TO VOTE</b>	<b>STATE WIDE VOTING HISTORY AS PERCENT OF ALL REGISTERED VOTERS)</b>
<b>VOTERS SEP 2002</b>	<b>652</b>	<b>46.1%</b>	<b>19.2%</b>
<b>VOTERS NOV 2002</b>	<b>1005</b>	<b>70.3%</b>	<b>43.5%</b>
<b>VOTERS MAR 2004</b>	<b>98</b>	<b>6.7%</b>	<b>5.0%</b>
<b>VOTERS SEP 2004</b>	<b>458</b>	<b>30.7%</b>	<b>10.5%</b>
<b>VOTERS NOV 2004</b>	<b>1248</b>	<b>82.3%</b>	<b>60.8%</b>
<b>VOTERS SEP 2006</b>	<b>544</b>	<b>31.4%</b>	<b>22.5%</b>
<b>VOTERS NOV 2006</b>	<b>1213</b>	<b>70.0%</b>	<b>57.2%</b>
<b>VOTERS MAR 2008</b>	<b>753</b>	<b>47.2%</b>	<b>30.7%</b>
<b>VOTERS SEP 2008</b>	<b>387</b>	<b>24.3%</b>	<b>9.4%</b>
<b>VOTERS NOV 2008</b>	<b>1247</b>	<b>78.2%</b>	<b>67.8%</b>

<b>COMPARABLE STATISTICS</b>		
	<b>46.1%</b>	<b>19.2%</b>
	<b>70.3%</b>	<b>43.5%</b>
	<b>6.7%</b>	<b>5.0%</b>
	<b>30.7%</b>	<b>10.5%</b>
	<b>82.3%</b>	<b>60.8%</b>
	<b>31.4%</b>	<b>22.5%</b>
	<b>70.0%</b>	<b>57.2%</b>
	<b>47.2%</b>	<b>30.7%</b>
	<b>24.3%</b>	<b>9.4%</b>
	<b>78.2%</b>	<b>67.8%</b>

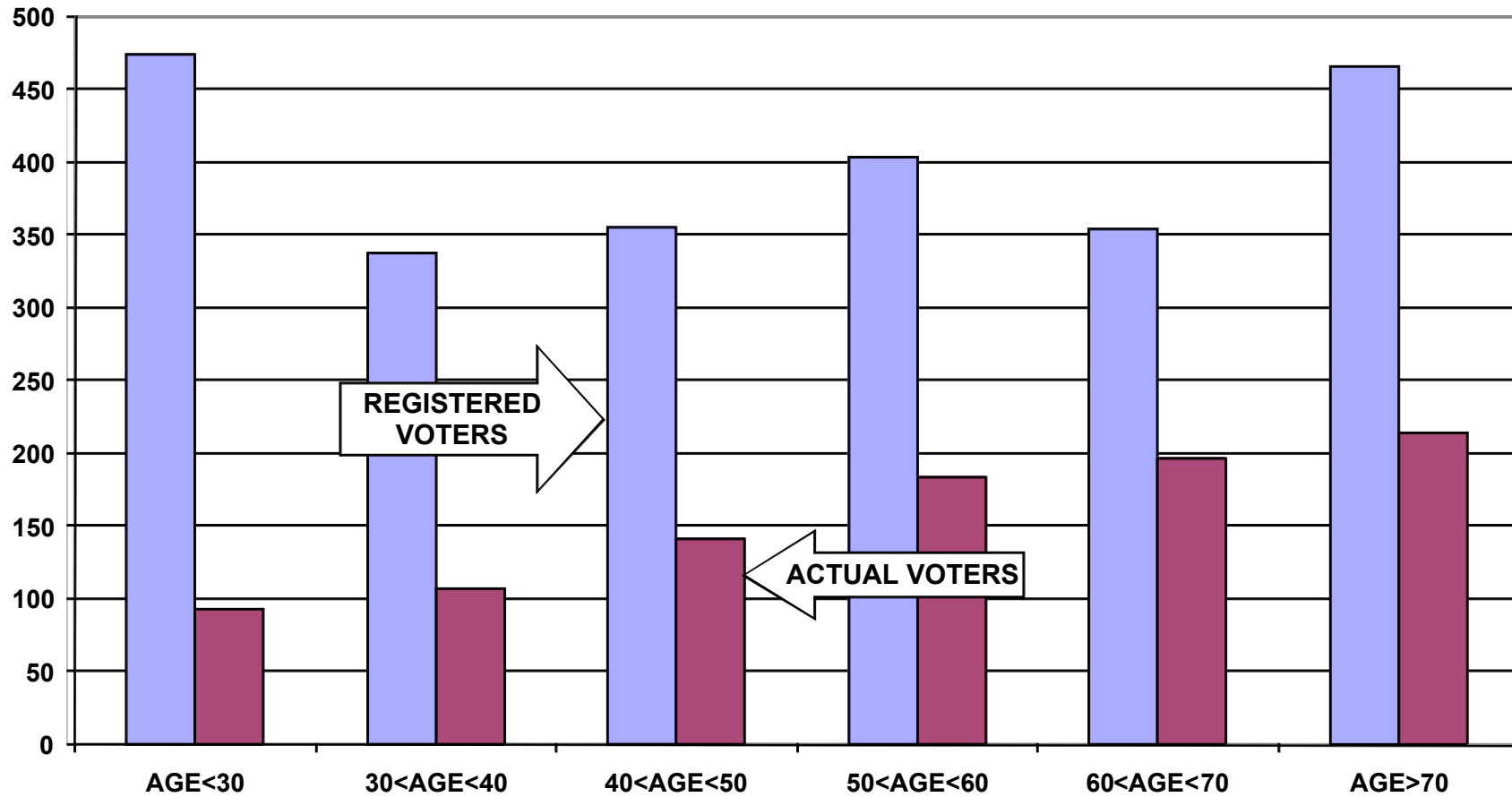
### REGISTERED VOTER TURNOUT COMPARISON BETWEEN RHODE ISLAND AND ST. FRANCIS XAVIER HEADS OF HOUSEHOLD



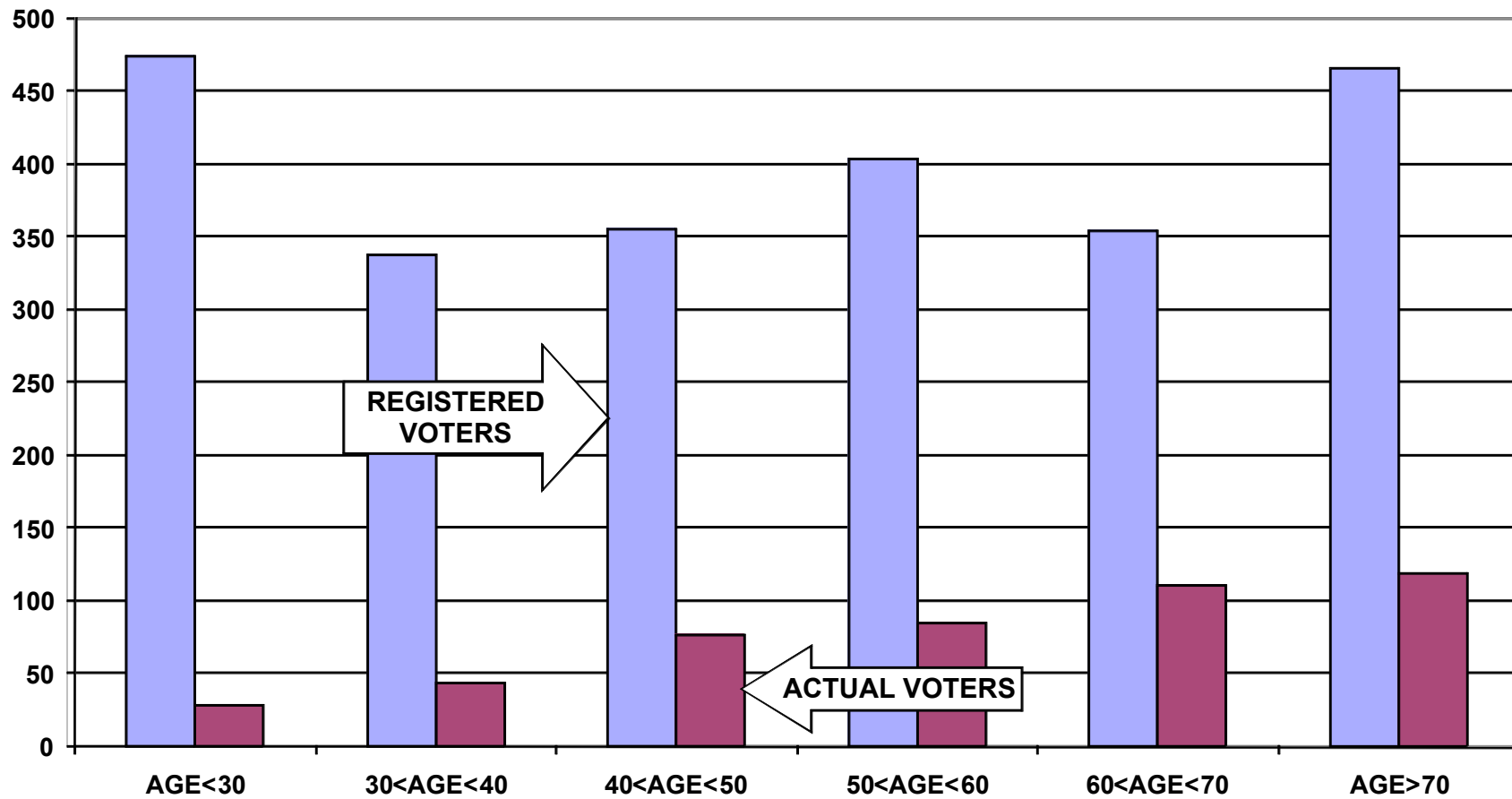
### DIFFERENCE IN VOTER TURNOUT BETWEEN ST. FRANCIS XAVIER VOTERS AND RHODE ISLAND VOTERS HEADS OF HOUSEHOLD



**REGISTERED VOTERS VERSUS ACTUAL VOTERS MARCH 2008  
ST. FRANCIS XAVIER  
ALL HOUSEHOLD MEMBERS**



**REGISTERED VOTERS VERSUS ACTUAL VOTERS SEPTEMBER 2008  
ST. FRANCIS XAVIER  
ALL HOUSEHOLD MEMBERS**





**REGISTERED VOTERS VERSUS ACTUAL VOTERS NOVEMBER 2008  
ST. FRANCIS XAVIER  
ALL HOUSEHOLD MEMBERS**

