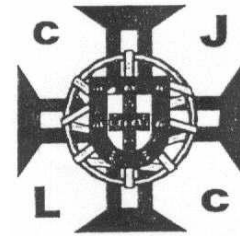


THE PORTUGUESE AMERICAN CITIZENSHIP PROJECT
A NON-PARTISAN INITIATIVE TO PROMOTE CITIZENSHIP AND CIVIC INVOLVEMENT



CLUBE JUVENTUDE LUSITANIA
CUMBERLAND, RHODE ISLAND

EVALUATION
OF
THE 2008 ELECTIONS

February 25, 2010

SUPPORTED BY THE
LUSO-AMERICAN
FOUNDATION

REPORT CONTENTS

- **STATISTICS AND SUMMARY OF WORK** 3
- **RESULTS** 4
- **RECOMMENDATIONS** 8
- **APPENDIX** 10

KEY STATISTICS

- **Number of Members in Rhode Island: 468**
- **Heads of Household registered to vote in Rhode Island: 241 (53% of all members)**
- **All Household Members registered to vote: 671**
- **Heads of Household voter turnout in March 2008: 50% (statewide turnout 31%)**
- **Heads of Household voter turnout* in September 2008 – 37% (statewide turnout 9%)**
- **Heads of Household voter turnout in November 2008 – 75% (statewide turnout 68%)**

SUMMARY OF WORK

Clube Juventude Lusitania has been an active participant in the Portuguese American Citizenship Project since late 2002.

For the 2008 September Statewide Primary Elections and the November Presidential Elections, postcards in Portuguese and English were sent to every registered voter in the organization reminding them of the date, location, and polling hours for each election.

* Voter turnout is the number of citizens voting in an election divided by the total number of citizens registered to vote. Voter turnout for each election is based on Rhode Island residents only.

RESULTS

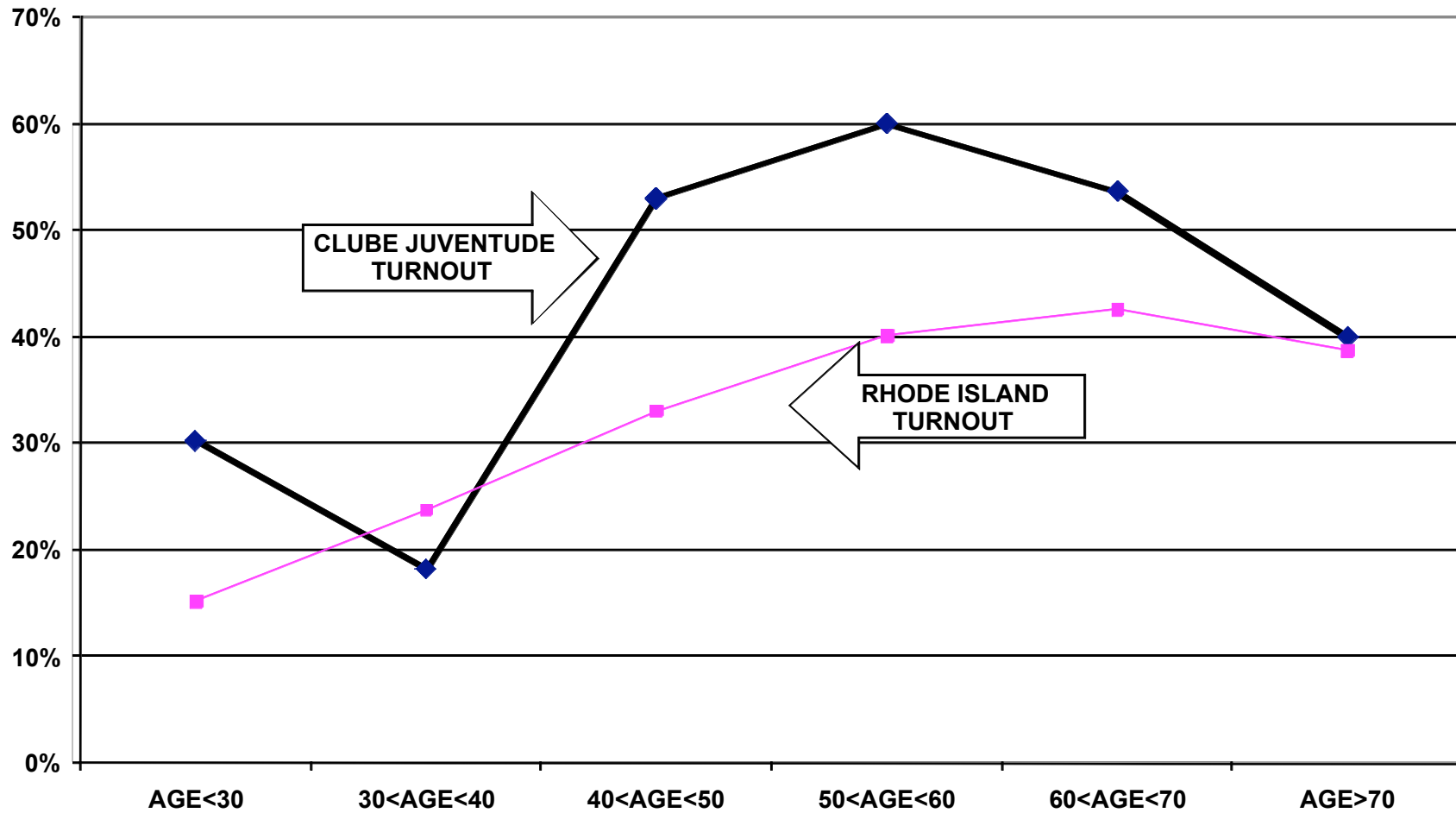
Clube Juventude Lusitania heads of household voter turnout was higher than the statewide turnout in the 2008 September Statewide Primary Election and the November Presidential Election. Heads of household turnout for the September Statewide Primary Elections was 37%, as compared to the state turnout of 9%. Clube Juventude Lusitania's heads of household turnout for the November Presidential Elections was 75%, as compared to the state turnout of 68%.

Voter turnout is not uniform across age groups. Voters under 30 years of age and especially those between 30 and 40 years old had lower turnout rates than the older voters. This is true among all registered voters in the organization and among registered voters in the community at large.

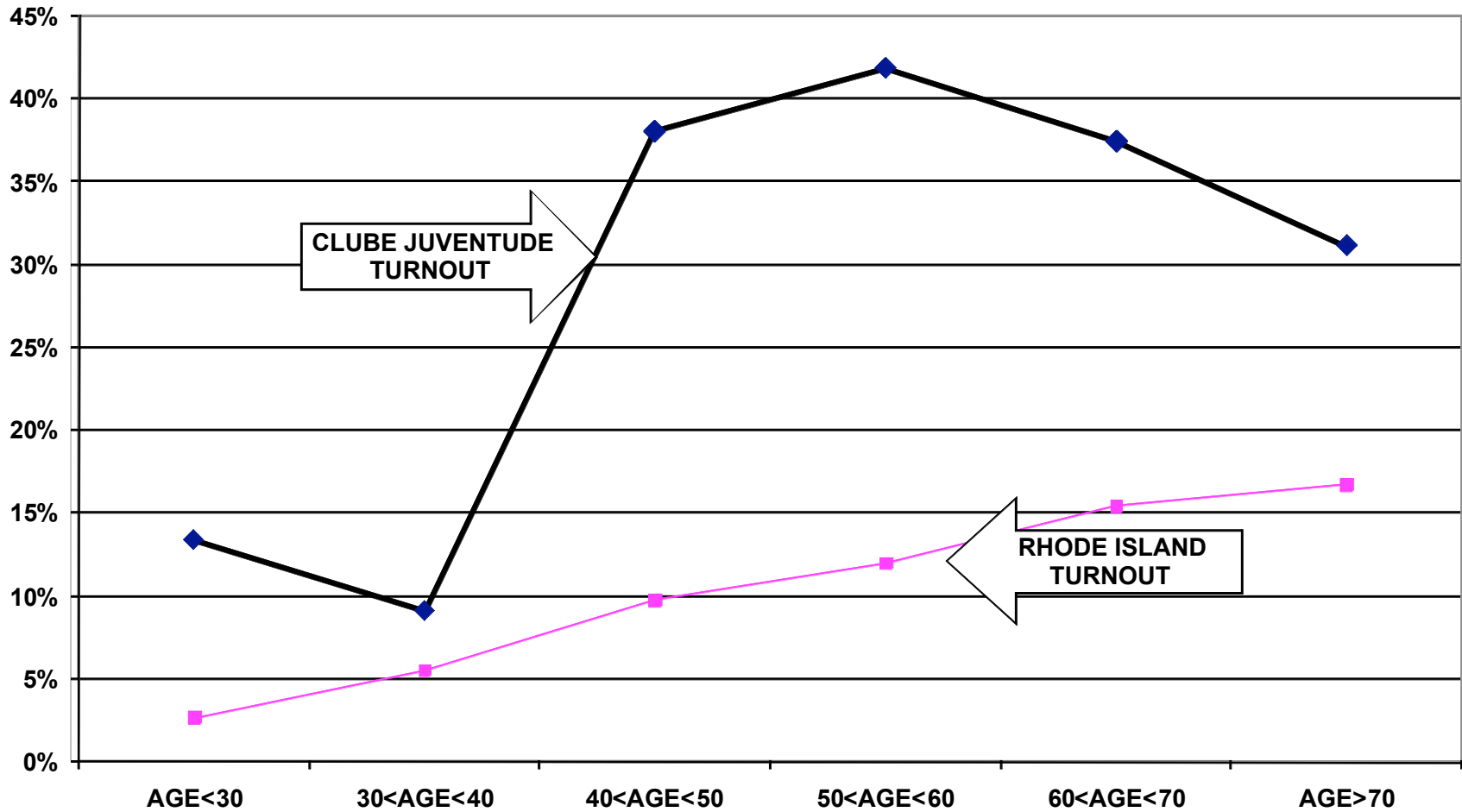
For example, voters under 30 years old associated with Clube Juventude Lusitania had a 13% turnout rate in the September Statewide Primary elections, while voters between 60 and 70 years old had a 37% turnout rate. For the November Presidential elections, voters under 30 years old had a 60% turnout rate, while those between 60 and 70 years old had a 73% turnout rate.

The following graphs for the 2008 March, September, and November elections illustrate the relationship between turnout rates and age. These graphs refer to all family members associated with the group, not just heads of household.

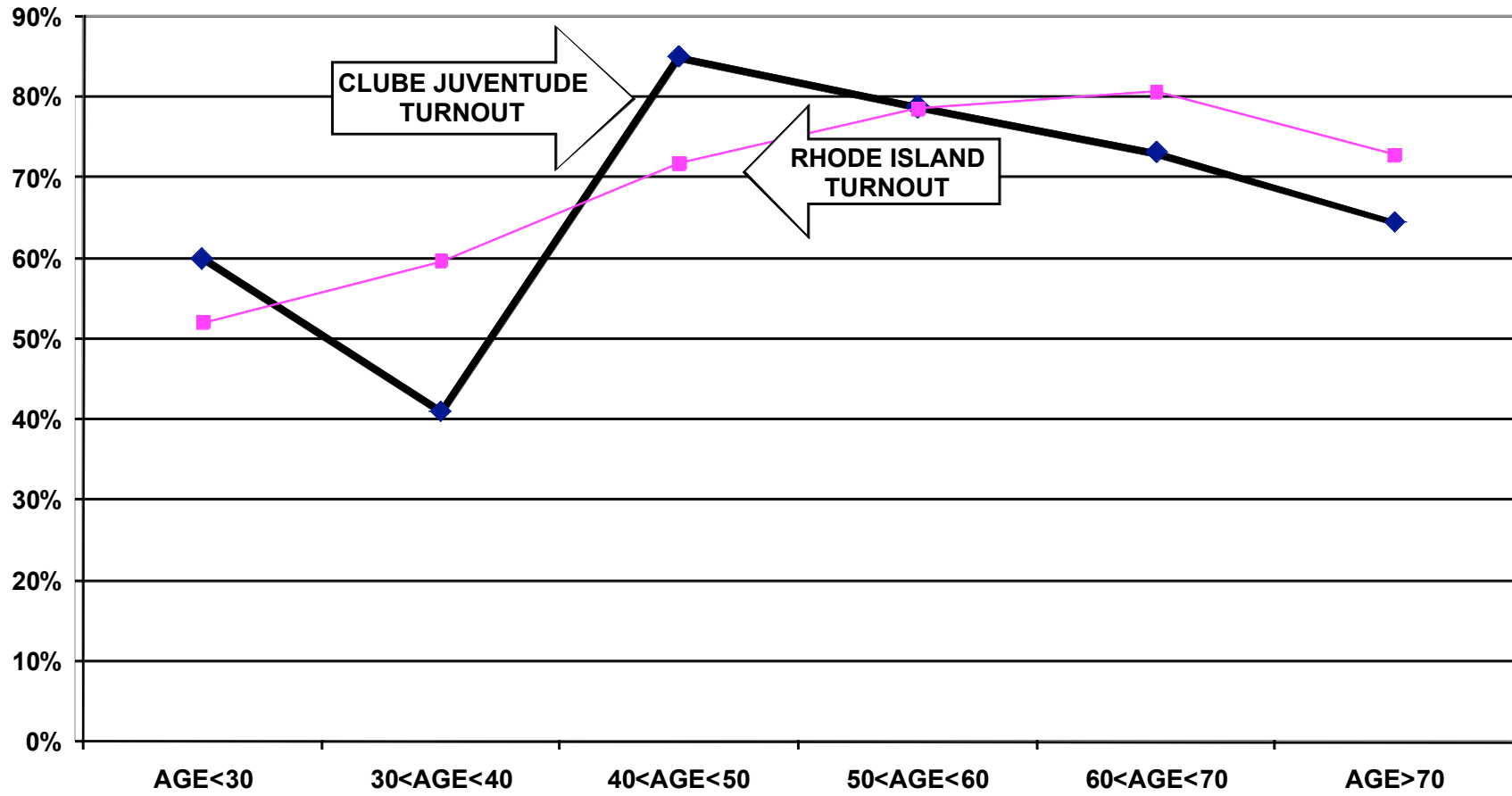
**TURNOUT BY AGE MARCH 2008
CLUBE JUVENTUDE LUSITANIA
ALL HOUSEHOLD MEMBERS**



TURNOUT BY AGE SEPTEMBER 2008 CLUBE JUVENTUDE LUSITANIA ALL HOUSEHOLD MEMBERS



TURNOUT BY AGE NOVEMBER 2008 CLUBE JUVENTUDE LUSITANIA ALL HOUSEHOLD MEMBERS



RECOMMENDATIONS

- The club must determine if and how it will provide funding for the costs of participation in the Citizenship Project. The Luso American Foundation has completed 10 years of financial support for the Project but will terminate this support for 2009 and beyond. In 2009, the Project will continue to provide data processing and assist in the preparation of voter cards. With a mailing permit, the cost of printing and mailing the cards for a September Primary, and November General elections is approximately \$410.
- If the club cannot provide the financial support for this mailing and/or cannot accomplish the logistics of printing and mailing the voter cards, interested members of the community should examine the accomplishments of the past ten years and determine how to build on these achievements using alternative methods of promoting civic participation.

APPENDIX

- Historical Data 10
- Registered Voter Turnout Bar Graph 11
- Difference in Voter Turnout Bar Graph 12
- Registered Voters vs. Actual Voters March 2008 Bar Graph 13
- Registered Voters vs. Actual Voters September 2008 Bar Graph 14
- Registered Voters vs. Actual Voters November 2008 Bar Graph 15

**HISTORICAL DATA: CLUBE JUVENTUDE LUSITANIA
REGISTRATION - VOTING**

MEMBERS 468

MEMBERS REGISTERED TO VOTE IN RHODE ISLAND 241 HEADS OF HOUSEHOLD

671 ALL FAMILY MEMBERS

VOTING PERFORMANCE OF RHODE ISLAND RESIDENTS

MEMBERS VOTING

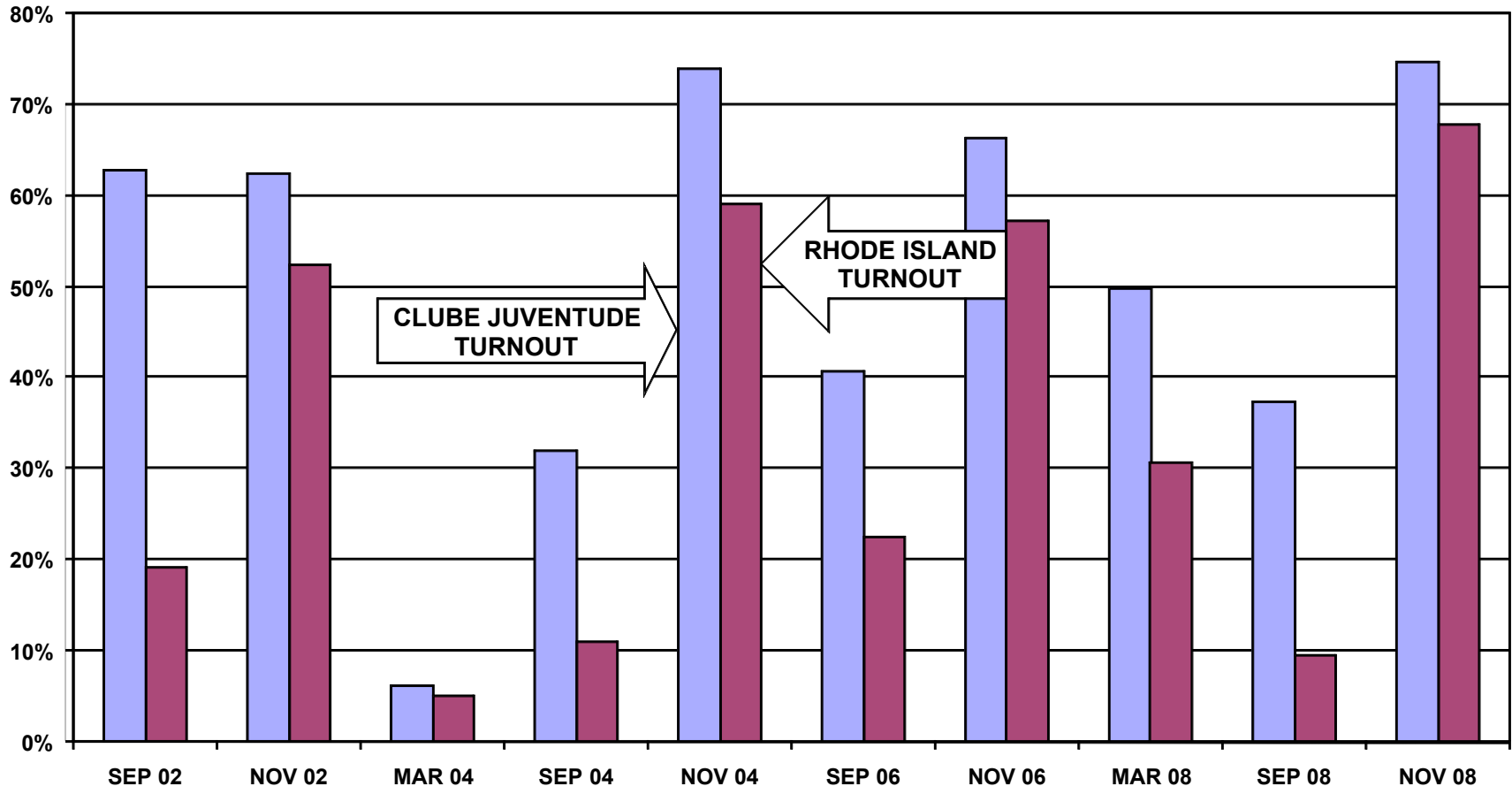
AS PERCENT OF ALL REGISTERED MEMBERS ELIGIBLE TO VOTE

STATE WIDE VOTING HISTORY (AS PERCENT OF ALL REGISTERED VOTERS)

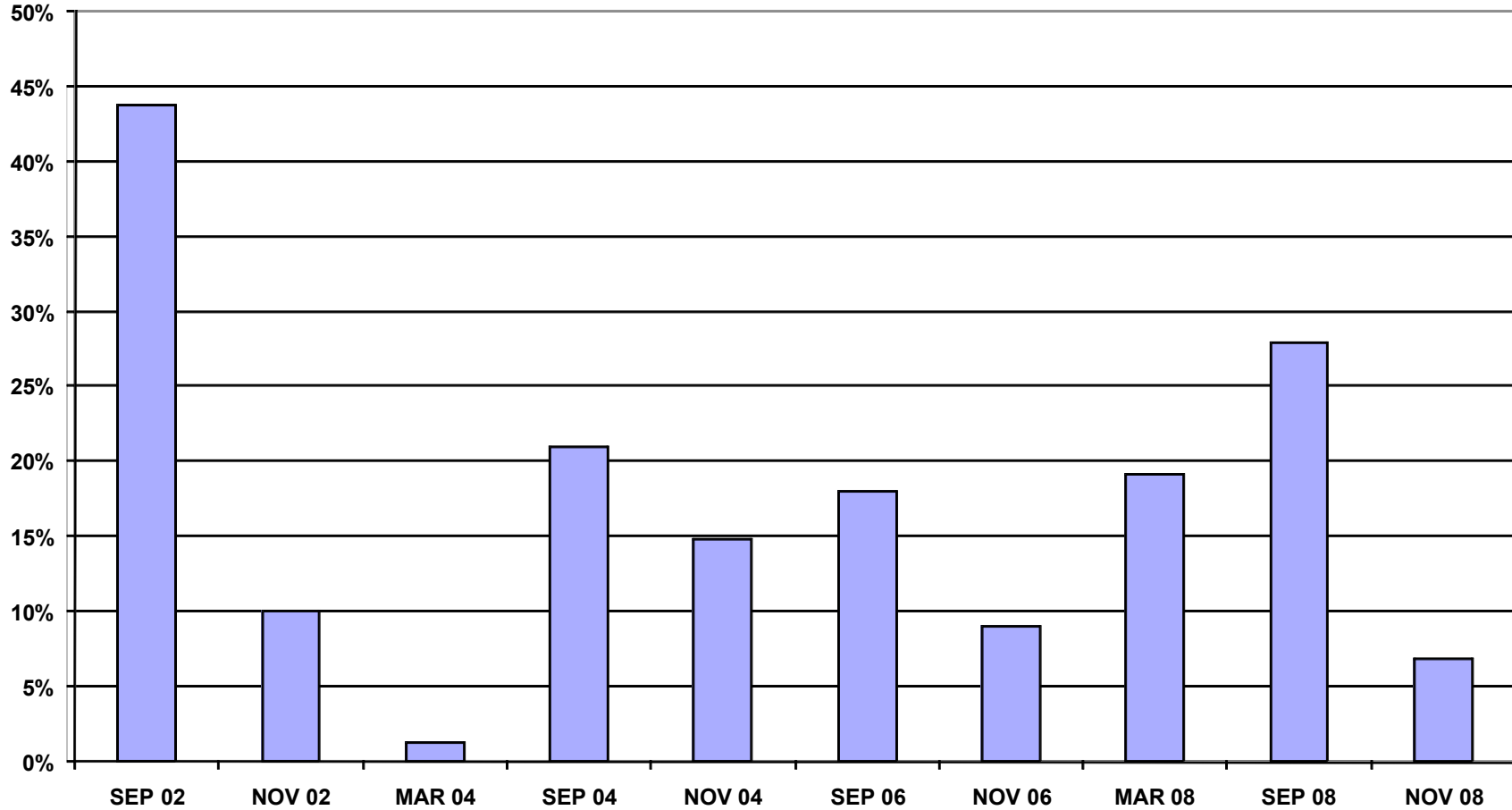
COMPARABLE STATISTICS

VOTERS MAR 2000	22	10.9%	14.1%
VOTERS SEP 2000	84	40.2%	13.3%
VOTERS NOV 2000	165	77.1%	58.6%
VOTERS SEP 2002	147	62.8%	19.0%
VOTERS NOV 2002	149	62.3%	52.3%
VOTERS MAR 2004	15	6.2%	4.9%
VOTERS SEP 2004	79	31.9%	10.9%
VOTERS NOV 2004	184	73.9%	59.0%
VOTERS SEP 2006	101	31.9%	22.5%
VOTERS NOV 2006	165	73.9%	57.2%
VOTERS MAR 2008	120	49.8%	30.7%
VOTERS SEP 2008	90	37.3%	9.4%
VOTERS NOV 2008	180	74.7%	67.8%

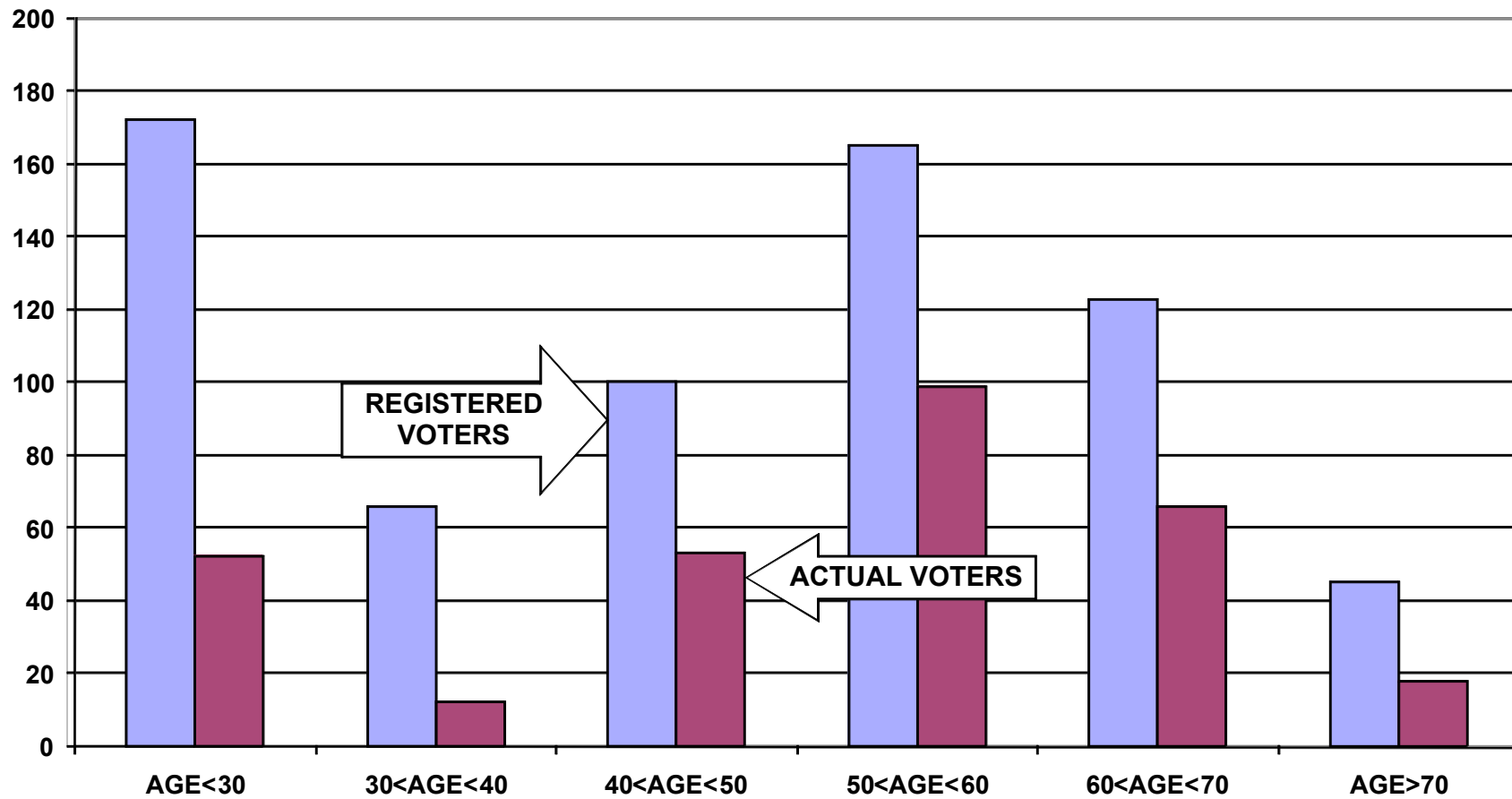
REGISTERED VOTER TURNOUT COMPARISON OF RHODE ISLAND AND CLUBE JUVENTUDE LUSITANIA HEADS OF HOUSEHOLD



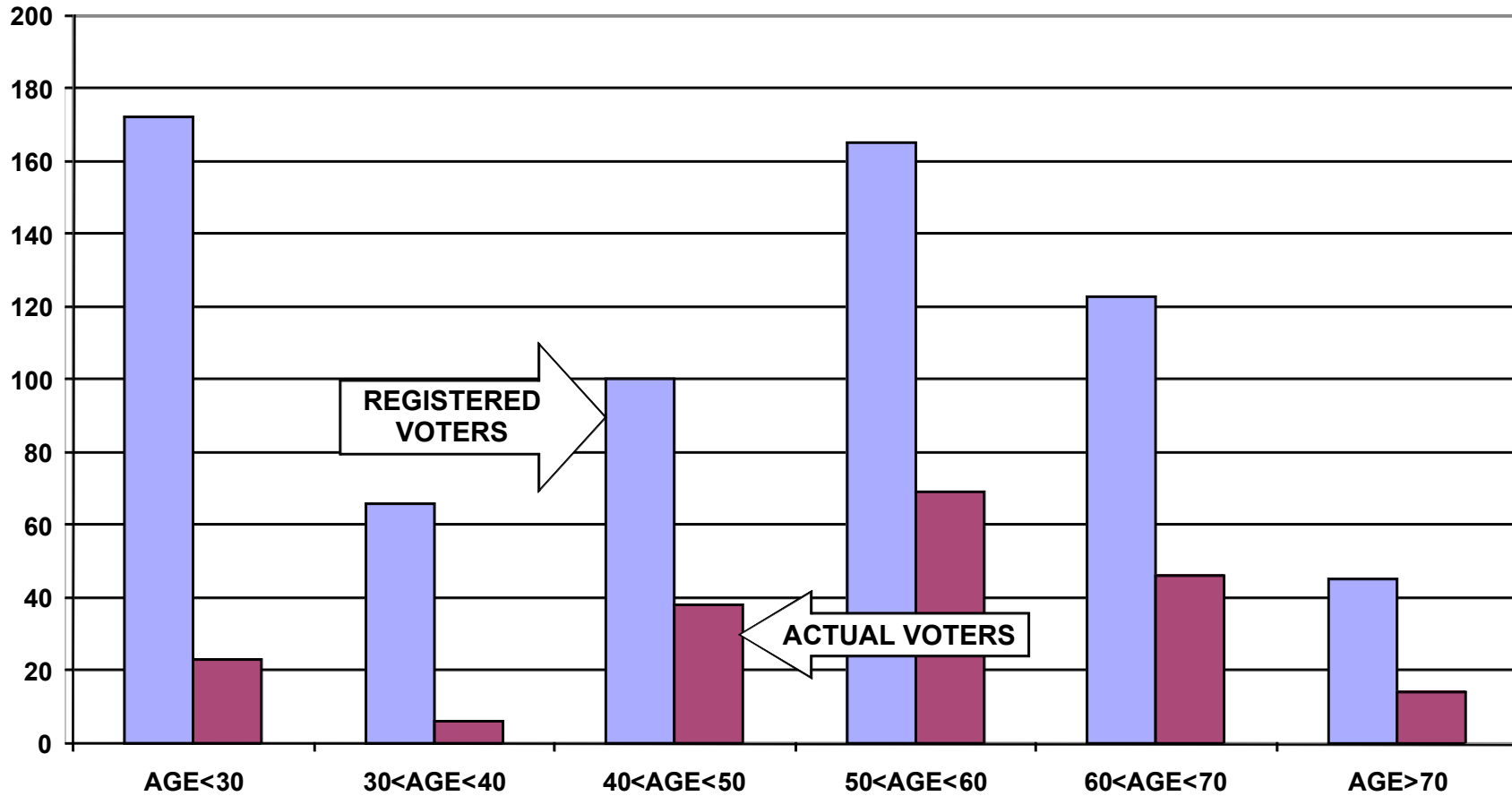
DIFFERENCE IN VOTER TURNOUT BETWEEN CLUBE JUVENTUDE LUSITANIA VOTERS AND RHODE ISLAND VOTERS HEADS OF HOUSEHOLD



REGISTERED VOTERS VERSUS ACTUAL VOTERS MARCH 2008
CLUBE JUVENTUDE LUSITANIA
ALL HOUSEHOLD MEMBERS



**REGISTERED VOTERS VERSUS ACTUAL VOTERS SEPTEMBER 2008
 CLUBE JUVENTUDE LUSITANIA
 ALL HOUSEHOLD MEMBERS**



REGISTERED VOTERS VERSUS ACTUAL VOTERS NOVEMBER 2008
CLUBE JUVENTUDE LUSITANIA
ALL HOUSEHOLD MEMBERS

