

**THE PORTUGUESE AMERICAN CITIZENSHIP PROJECT**  
**A NON-PARTISAN INITIATIVE TO PROMOTE CITIZENSHIP AND CIVIC INVOLVEMENT**

**ST. ANTHONY PARISH**  
**STATE OF RHODE ISLAND**

**EVALUATION**  
**OF**  
**THE 2010 ELECTIONS**



**September 1, 2011**

**SUPPORTED BY THE**

  
REGIÃO AUTÓNOMA DOS AÇORES  
PRESIDÊNCIA DO GOVERNO  
Secretário Regional da Presidência  
Direcção Regional das Comunidades

**LUSO-AMERICAN**  
**FOUNDATION**

# REPORT CONTENTS

<b>STATISTICS AND SUMMARY OF WORK</b>	<b>3</b>
<b>RESULTS</b>	<b>4</b>
<b>RECOMMENDATIONS</b>	<b>7</b>
<b>APPENDIX</b>	<b>8</b>

## KEY STATISTICS

- **Number of Members in Rhode Island: 1,067**
- **Heads of Household registered to vote in Rhode Island: 276 (28% of all members)**
- **All Household Members registered to vote in Rhode Island: 472**
- **Heads of Household voter turnout<sup>1</sup> in September 2010 – 45% (statewide turnout 18%)**
- **Heads of Household voter turnout in November 2010 – 52% (statewide turnout 49%)**

## SUMMARY OF WORK

St. Anthony's has been an active participant in the Portuguese American Citizenship Project since late 2002.

For the 2010 September Primary Elections and the November General Elections, no postcards in either Portuguese or English were sent to the registered voters in the parish reminding them of the date, location, and polling hours for each election.

---

<sup>1</sup> Voter turnout is the number of citizens voting in an election divided by the total number of citizens registered to vote. Voter turnout for each election is based on Rhode Island residents only.

## RESULTS

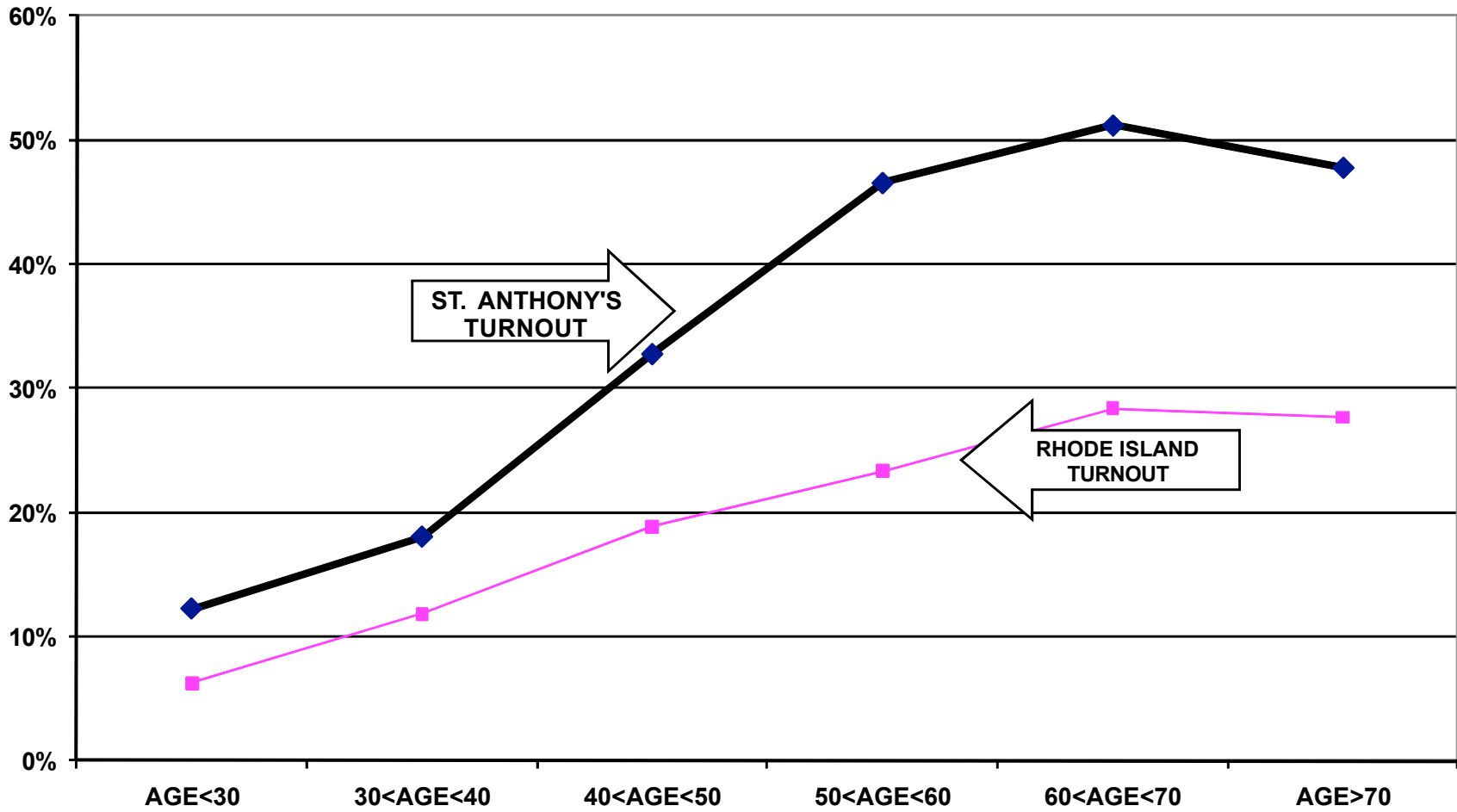
St. Anthony's heads of household voter turnout was higher than the statewide turnout in the 2010 September Primary Election and the November General Election. Heads of household turnout for the September Primary Elections was 45%, as compared to the state turnout of 18%. St. Anthony's heads of household turnout for the November General Election was 52%, as compared to the state turnout of 49%.

Voter turnout is not uniform across age groups. Voters under 30 years of age and even those between 30 and 40 years old had lower turnout rates than the older voters. This is true among all registered voters associated with the parish and among registered voters in the community at large.

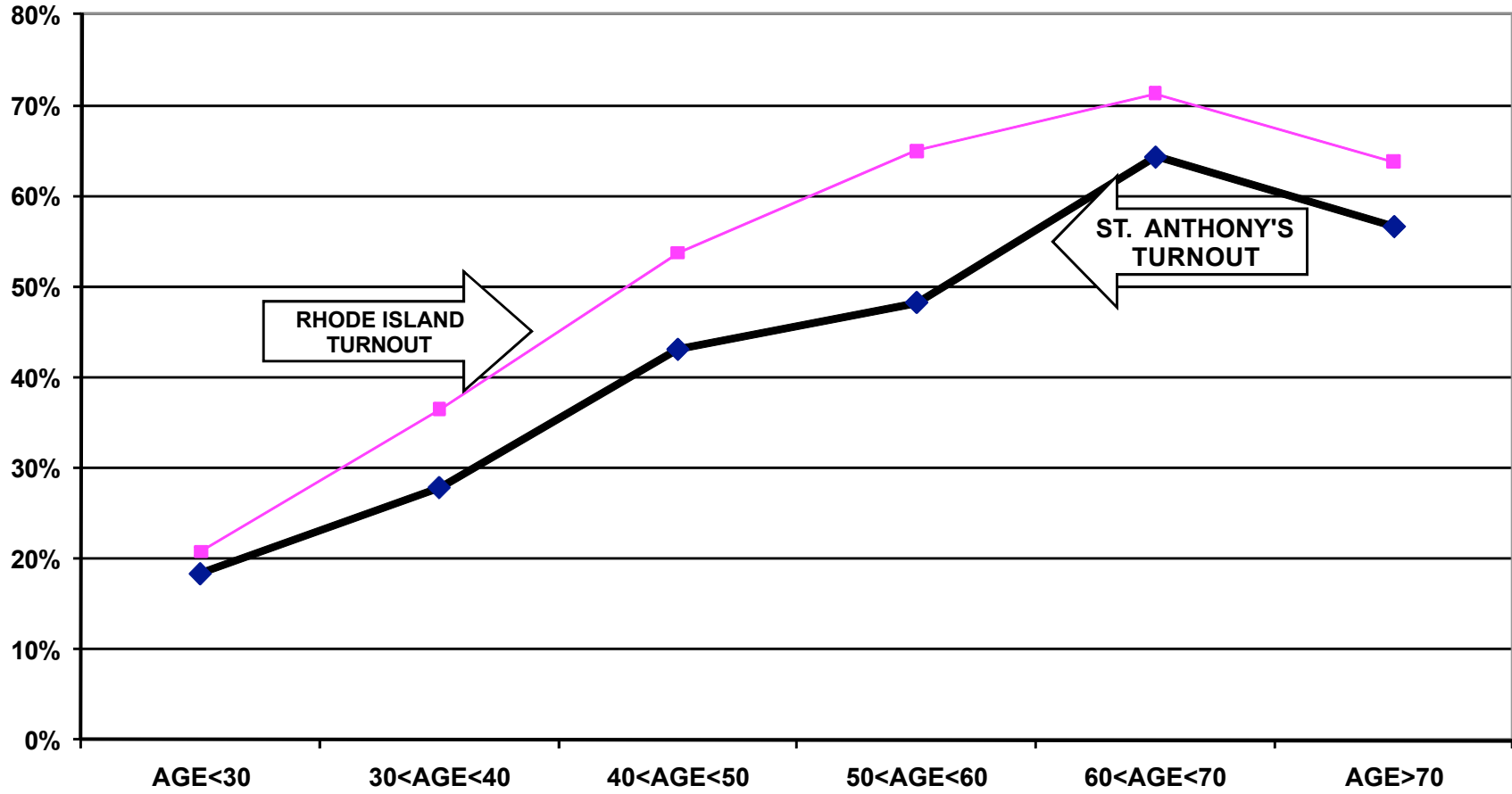
For example, registered voters that are associated with St. Anthony's under 30 years old had a 12% turnout rate in the September Primary elections, while those between 60 and 70 years old had a 51% turnout rate. For the November General elections, the under 30 year-old associated voters had a 18% turnout rate, compared to a 64% turnout rate among parishioners between 60 and 70 years old.

The following graphs for the 2010 September and November elections illustrate the relationship between turnout rates and age. These graphs refer to all family members associated with the parish, not just heads of household.

### TURNOUT BY AGE SEPTEMBER 2010 SAINT ANTHONY'S PARISH ALL HOUSEHOLD MEMBERS



### TURNOUT BY AGE NOVEMBER 2010 SAINT ANTHONY'S PARISH ALL HOUSEHOLD MEMBERS



## RECOMMENDATIONS

- The parish must determine if and how it will provide funding for the costs of participation in the Citizenship Project. After 10 years of full financial support for the Project, the Luso American Foundation significantly reduced its funding in 2009. In 2011, the Project will continue to provide data processing and assist in the preparation of voter cards.
- If the parish cannot provide the financial support for this mailing and/or cannot accomplish the logistics of printing and mailing the voter cards, interested members of the community should examine the accomplishments of the past ten years and determine how to build on these achievements using alternative methods of promoting civic participation.

# APPENDIX

Historical Data	9
Registered Voter Turnout Bar Graph	10
Difference in Voter Turnout Bar Graph	11
Registered Voters vs. Actual Voters September 2010 Bar Graph	12
Registered Voters vs. Actual Voters November 2010 Bar Graph	13



**HISTORICAL DATA: SAINT ANTHONY'S PARISH  
REGISTRATION - VOTING**

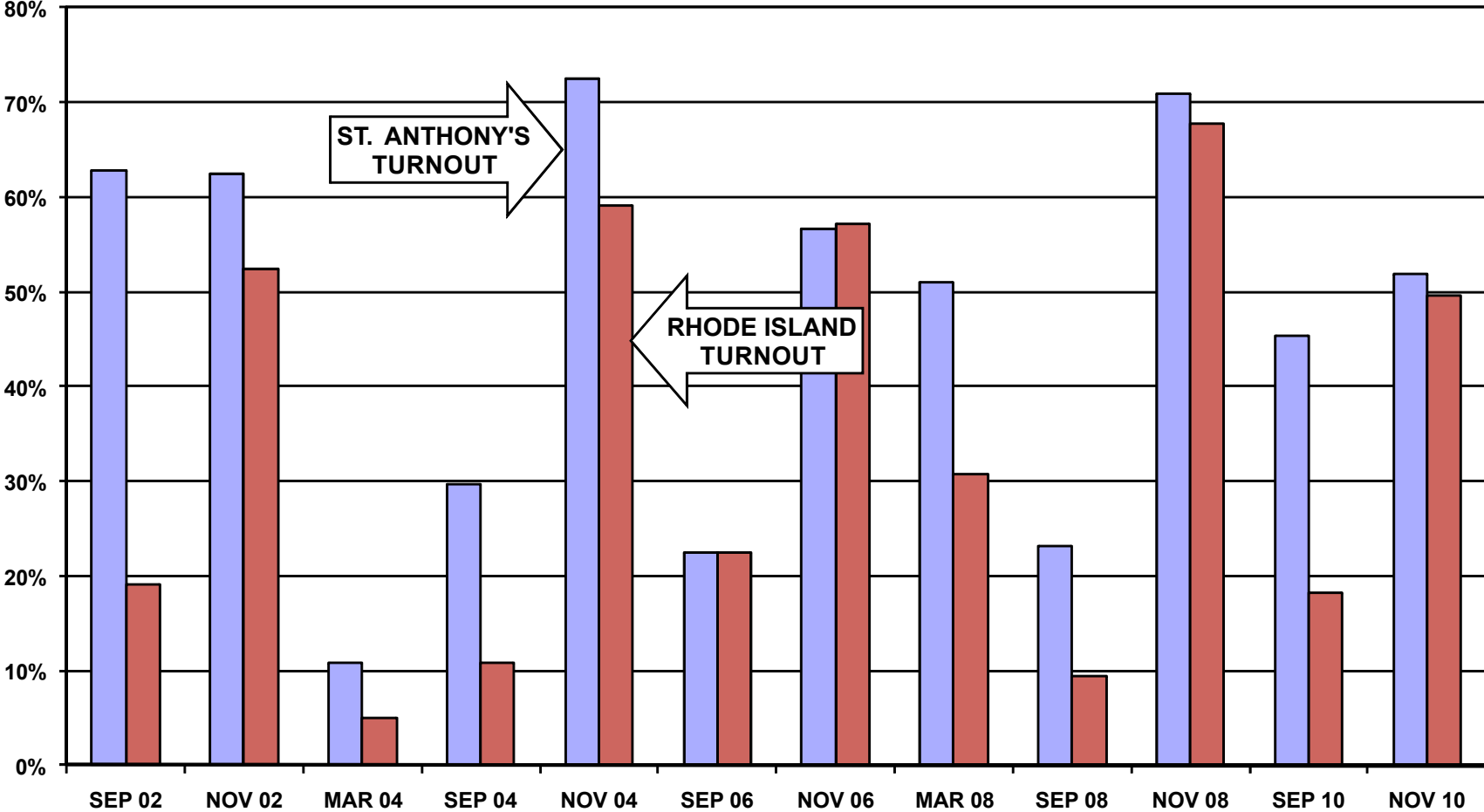
<b>PARISHIONERS</b>	<b>1,067</b>
<b>MEMBERS REGISTERED TO VOTE IN RHODE ISLAND</b>	<b>276 HEADS OF HOUSEHOLD</b>
	<b>472 ALL FAMILY MEMBERS</b>

**VOTING PERFORMANCE OF RHODE ISLAND RESIDENTS**

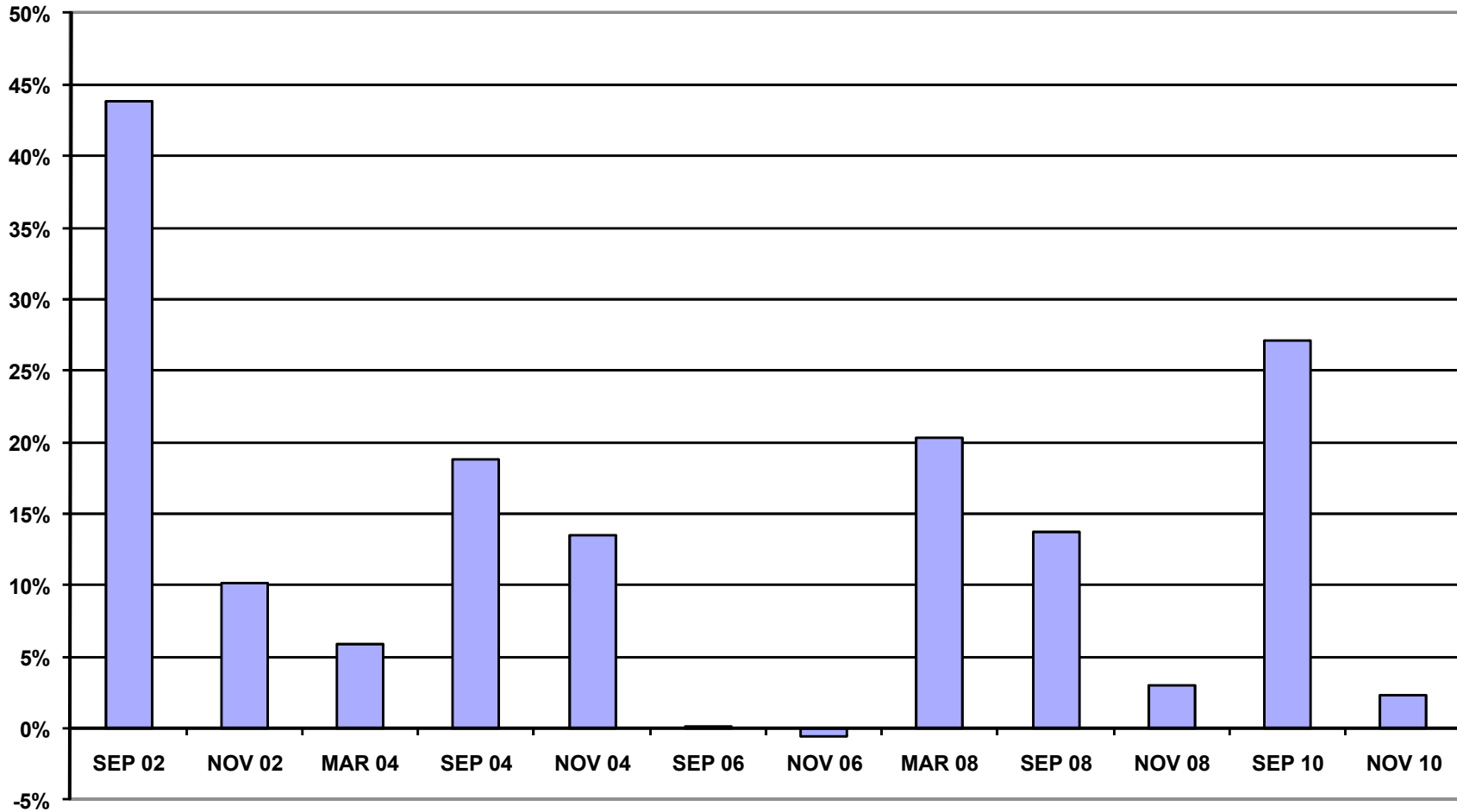
<b>MEMBERS VOTING</b>	<b>AS PERCENT OF ALL REGISTERED MEMBERS ELIGIBLE TO VOTE</b>	<b>STATE WIDE VOTING HISTORY AS PERCENT OF ALL REGISTERED VOTERS)</b>
-----------------------	--	---

		<b>COMPARABLE STATISTICS</b>	
<b>VOTERS SEP 2000</b>	<b>60</b>	<b>19.5%</b>	<b>13.3%</b>
<b>VOTERS NOV 2000</b>	<b>245</b>	<b>78.0%</b>	<b>58.6%</b>
<b>VOTERS SEP 2002</b>	<b>218</b>	<b>62.8%</b>	<b>19.0%</b>
<b>VOTERS NOV 2002</b>	<b>220</b>	<b>62.5%</b>	<b>52.3%</b>
<b>VOTERS MAR 2004</b>	<b>39</b>	<b>10.8%</b>	<b>4.9%</b>
<b>VOTERS SEP 2004</b>	<b>111</b>	<b>29.7%</b>	<b>10.9%</b>
<b>VOTERS NOV 2004</b>	<b>272</b>	<b>72.5%</b>	<b>59.0%</b>
<b>VOTERS SEP 2006</b>	<b>80</b>	<b>22.5%</b>	<b>22.5%</b>
<b>VOTERS NOV 2006</b>	<b>201</b>	<b>56.6%</b>	<b>57.2%</b>
<b>VOTERS MAR 2008</b>	<b>154</b>	<b>51.0%</b>	<b>30.7%</b>
<b>VOTERS SEP 2008</b>	<b>70</b>	<b>23.2%</b>	<b>9.4%</b>
<b>VOTERS NOV 2008</b>	<b>214</b>	<b>70.9%</b>	<b>67.8%</b>
<b>VOTERS SEP 2010</b>	<b>125</b>	<b>45.3%</b>	<b>18.2%</b>
<b>VOTERS NOV 2010</b>	<b>143</b>	<b>51.8%</b>	<b>49.5%</b>

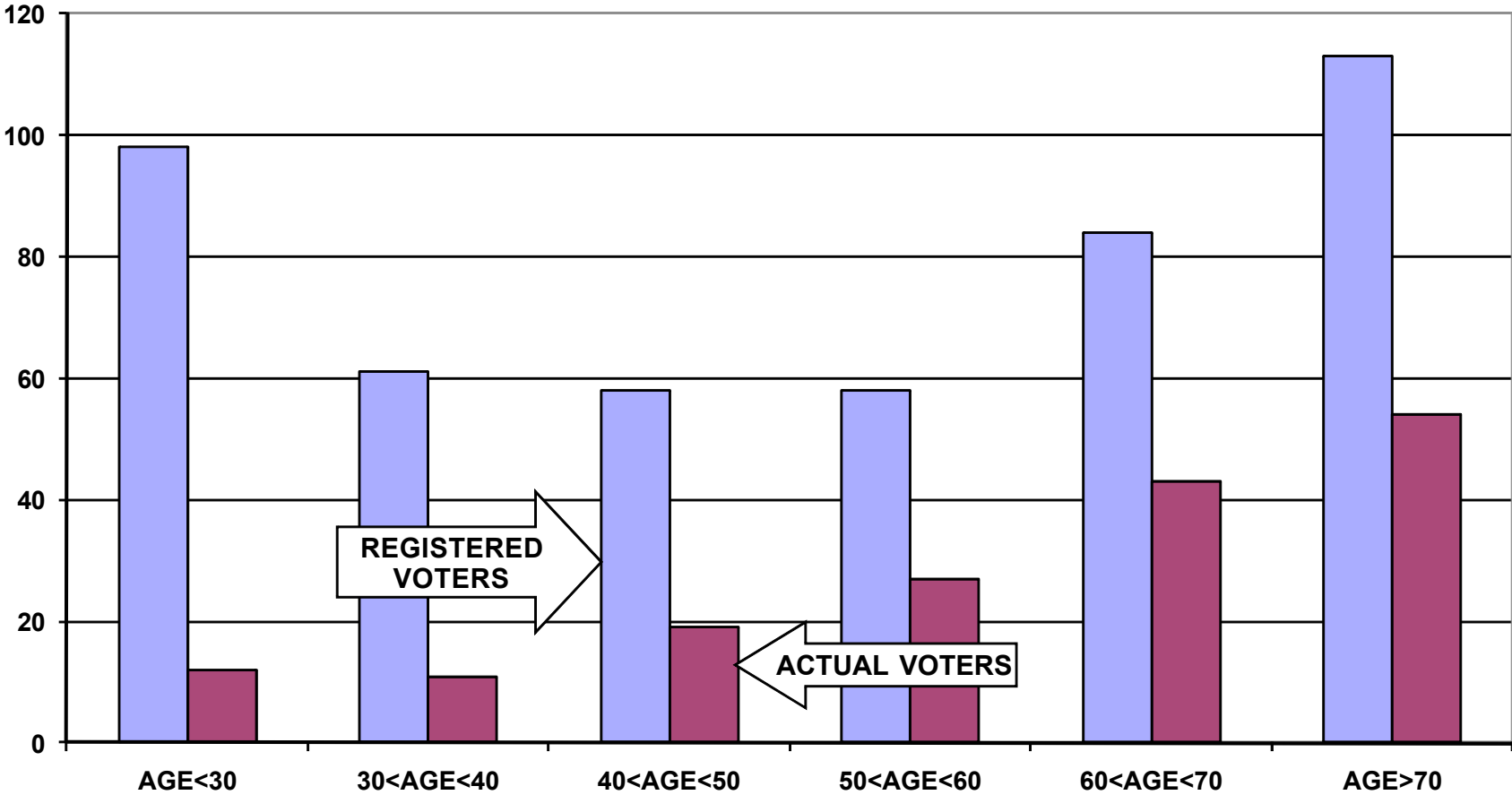
### REGISTERED VOTER TURNOUT COMPARISON BETWEEN RHODE ISLAND AND ST. ANTHONY HEADS OF HOUSEHOLD



### DIFFERENCE IN VOTER TURNOUT BETWEEN ST. ANTHONY VOTERS AND RHODE ISLAND VOTERS HEADS OF HOUSEHOLD



**REGISTERED VOTERS VERSUS ACTUAL VOTERS SEPTEMBER 2010  
SAINT ANTHONY'S PARISH  
ALL HOUSEHOLD MEMBERS**



**REGISTERED VOTERS VERSUS ACTUAL VOTERS NOVEMBER 2010  
SAINT ANTHONY'S PARISH  
ALL HOUSEHOLD MEMBERS**

