

THE PORTUGUESE AMERICAN CITIZENSHIP PROJECT
A NON-PARTISAN INITIATIVE TO PROMOTE CITIZENSHIP AND CIVIC INVOLVEMENT



PORTUGUESE SOCIAL CLUB
PAWTUCKET, RHODE ISLAND

EVALUATION
OF
THE 2010 ELECTIONS

September 1, 2011

SUPPORTED BY THE


REGIÃO AUTÓNOMA DOS AÇORES
PRESIDÊNCIA DO GOVERNO
Secretário Regional da Presidência
Direcção Regional das Comunidades

LUSO-AMERICAN
FOUNDATION

REPORT CONTENTS

STATISTICS AND SUMMARY OF WORK	3
RESULTS	4
RECOMMENDATIONS	7
APPENDIX	8

KEY STATISTICS

- **Number of Members in Rhode Island: 534**
- **Heads of Household registered to vote in Rhode Island: 206 (41% of all members)**
- **All Household Members registered to vote in Rhode Island: 514**
- **Heads of Household voter turnout¹ in September 2010 – 36% (statewide turnout 18%)**
- **Heads of Household voter turnout in November 2010 – 55% (statewide turnout 50%)**

SUMMARY OF WORK

The Portuguese Social Club has been an active participant in the Portuguese American Citizenship Project since late 2002.

For the 2010 November General Elections, postcards in Portuguese and English were sent to every registered voter in the organization reminding them of the date and polling hours for each election, however, no cards were sent for the September Primary Elections.

¹ Voter turnout is the number of citizens voting in an election divided by the total number of citizens registered to vote. Voter turnout for each election is based on Rhode Island residents only.

RESULTS

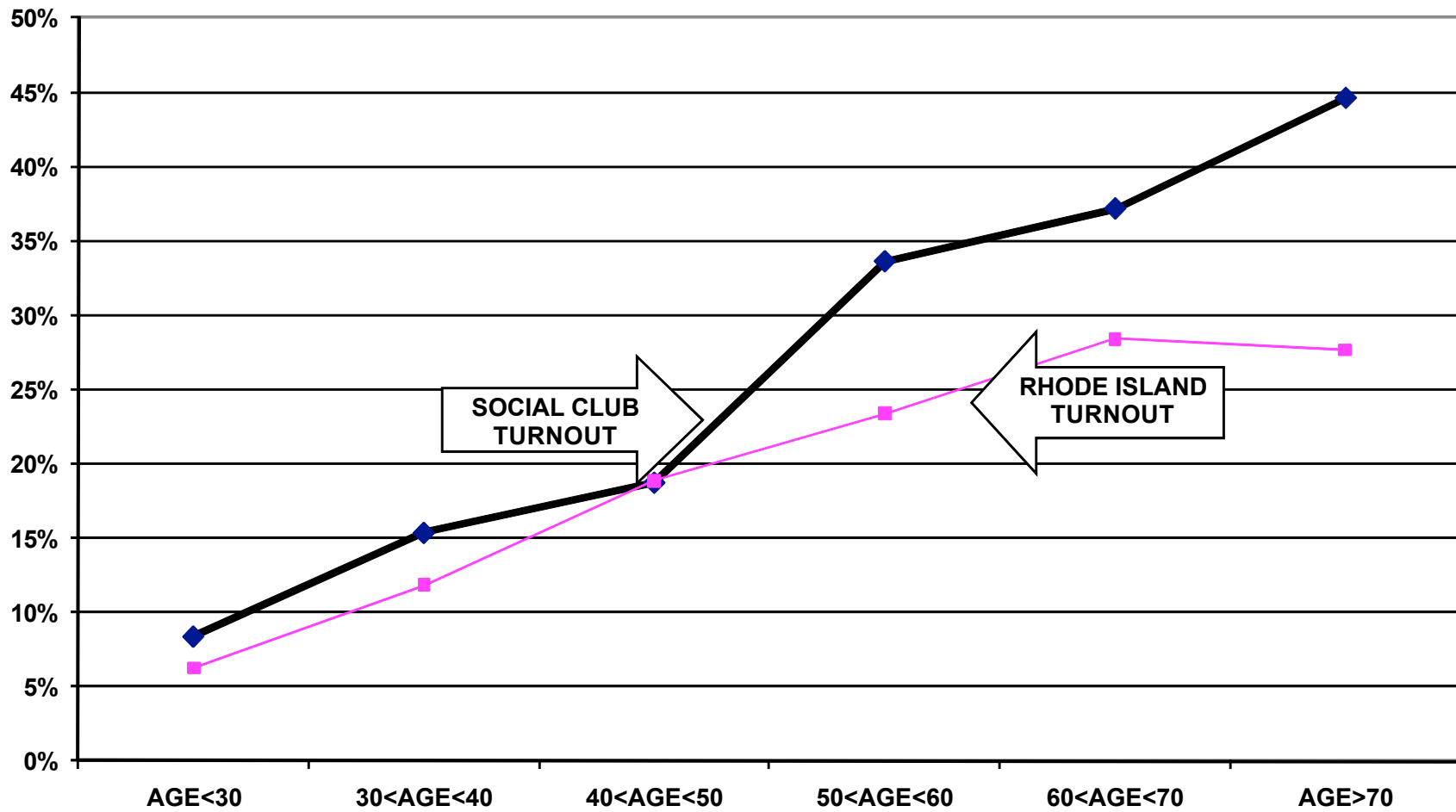
The Portuguese Social Club's heads of household voter turnout was higher than the statewide turnout in the 2010 September Primary Election and the November General Election. Heads of household turnout for the September Primary Elections was 36%, as compared to the state turnout of 18%. The Portuguese Social Club's heads of household turnout for the November General Election was 55%, as compared to the state turnout of 50%.

Voter turnout is not uniform across age groups. Voters under 30 years of age and even those between 30 and 40 years old had lower turnout rates than the older voters. This is true among all registered voters in the organization and among registered voters in the community at large.

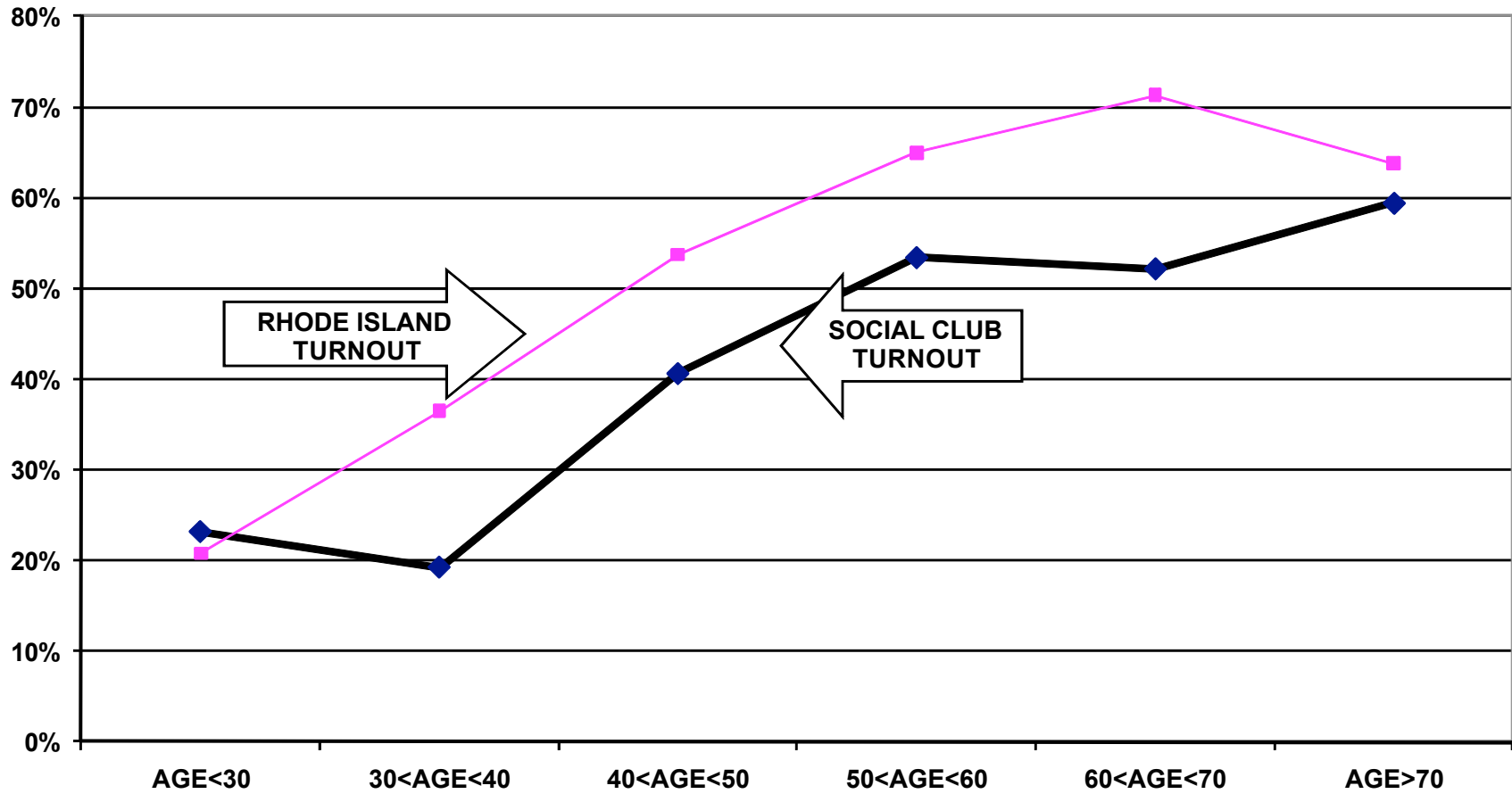
For example, registered voters that are associated with the Portuguese Social Club under 30 years old had a 8% turnout rate in the September Primary elections while those between 60 and 70 years old had a 37% turnout rate. For the November General elections, the under 30 years old associated voters had a 23% turnout rate, compared to a 52% turnout rate among members between 60 and 70 years old.

The following graphs for the 2010 September and November elections illustrate the relationship between turnout rates and age. These graphs refer to all family members associated with the club, not just heads of household.

**TURNOUT BY AGE SEPTEMBER 2010
THE PORTUGUESE SOCIAL CLUB
ALL HOUSEHOLD MEMBERS**



TURNOUT BY AGE NOVEMBER 2010 THE PORTUGUESE SOCIAL CLUB ALL HOUSEHOLD MEMBERS



RECOMMENDATIONS

- The club must determine if and how it will provide funding for the costs of participation in the Citizenship Project. After 10 years of full financial support for the Project, the Luso American Foundation significantly reduced its funding in 2009. In 2011, the Project will continue to provide data processing and assist in the preparation of voter cards.
- If the club cannot provide the financial support for this mailing and/or cannot accomplish the logistics of printing and mailing the voter cards, interested members of the community should examine the accomplishments of the past ten years and determine how to build on these achievements using alternative methods of promoting civic participation.

APPENDIX

Historical Data	9
Registered Voter Turnout Bar Graph	10
Difference in Voter Turnout Bar Graph	11
Registered Voters vs. Actual Voters September 2010 Bar Graph	12
Registered Voters vs. Actual Voters November 2010 Bar Graph	13

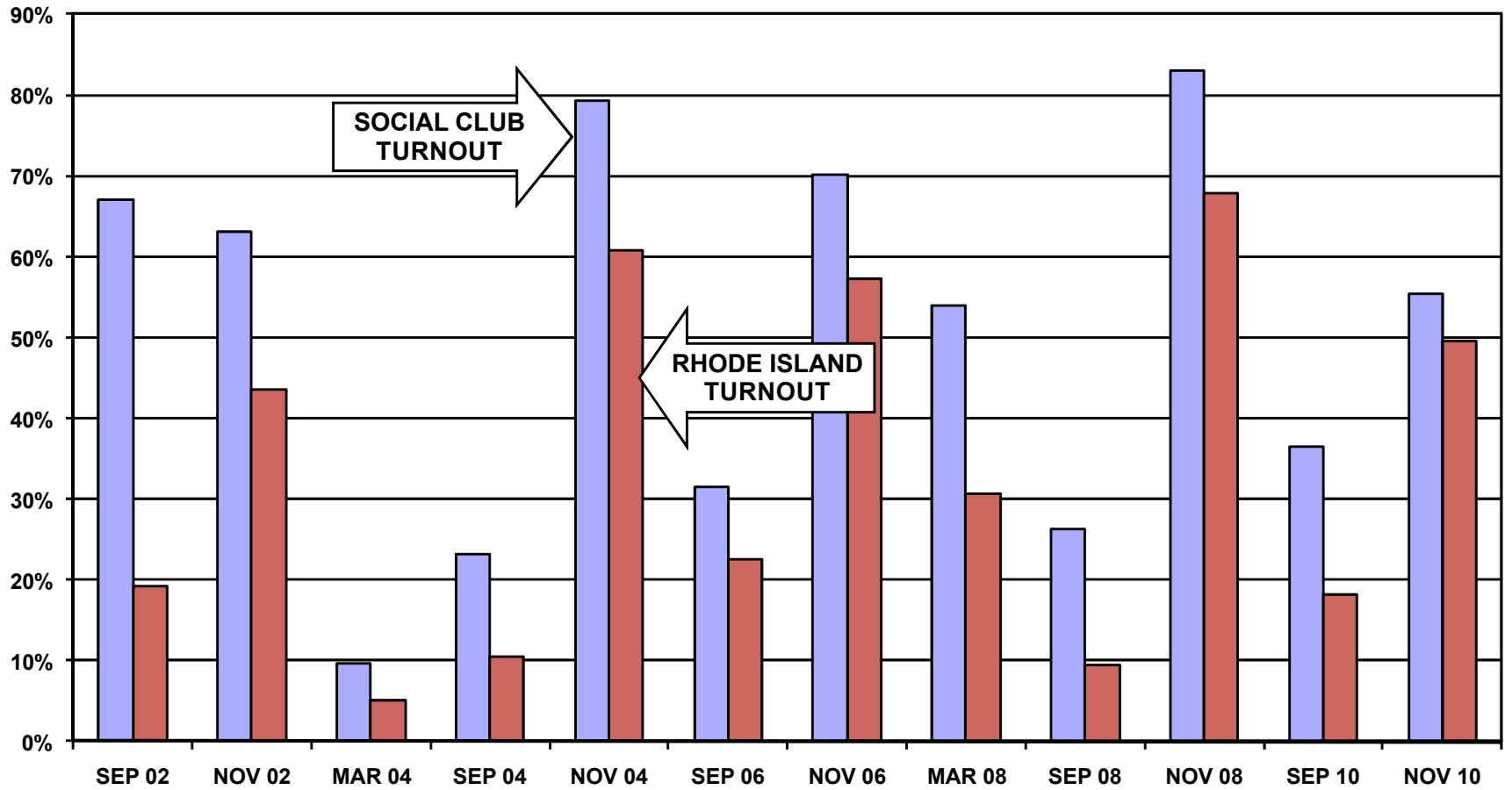
**HISTORICAL DATA: PORTUGUESE SOCIAL CLUB
REGISTRATION - VOTING**

MEMBERS RESIDING IN RHODE ISLAND	534
MEMBERS REGISTERED TO VOTE IN RHODE ISLAND	206 HEADS OF HOUSEHOLD
	514 ALL FAMILY MEMBERS

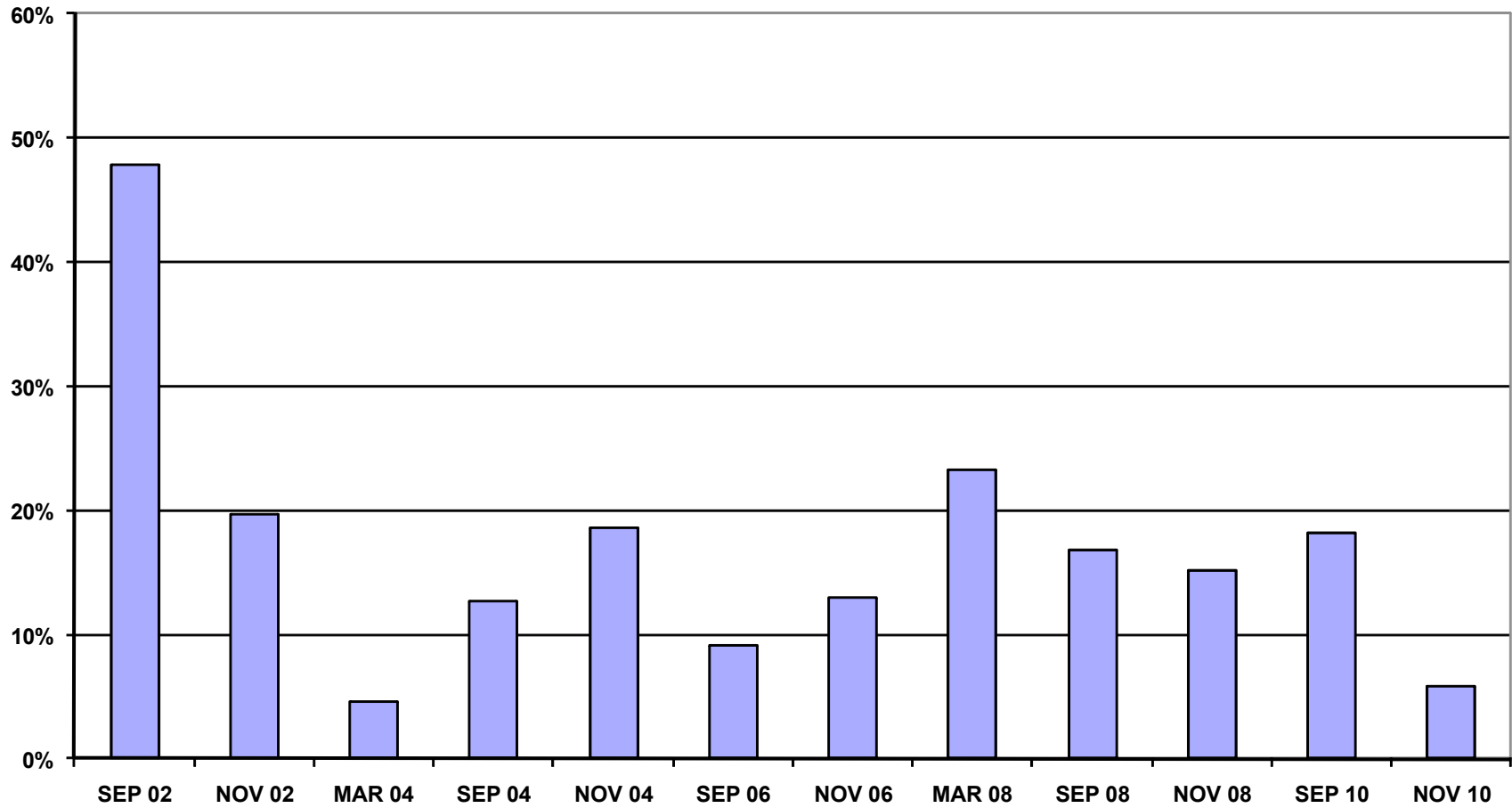
VOTING PERFORMANCE OF RHODE ISLAND RESIDENTS

MEMBERS VOTING	AS PERCENT OF ALL REGISTERED MEMBERS ELIGIBLE TO VOTE	STATEWIDE VOTING HISTORY AS PERCENT OF ALL REGISTERED VOTERS)
	COMPARABLE STATISTICS	
VOTERS SEP 2000	22.6%	13.3%
VOTERS NOV 2000	74.9%	58.6%
VOTERS SEP 2002 153	69.7%	19.2%
VOTERS NOV 2002 144	68.0%	43.5%
VOTERS MAR 2004 22	10.7%	5.0%
VOTERS SEP 2004 53	22.7%	10.5%
VOTERS NOV 2004 181	71.6%	60.8%
VOTERS SEP 2006 72	31.6%	22.5%
VOTERS NOV 2006 160	70.2%	57.2%
VOTERS MAR 2008 117	53.9%	30.7%
VOTERS SEP 2008 57	26.3%	9.4%
VOTERS NOV 2008 180	82.9%	67.8%
VOTERS SEP 2010 75	36.4%	18.2%
VOTERS NOV 2010 114	55.3%	49.5%

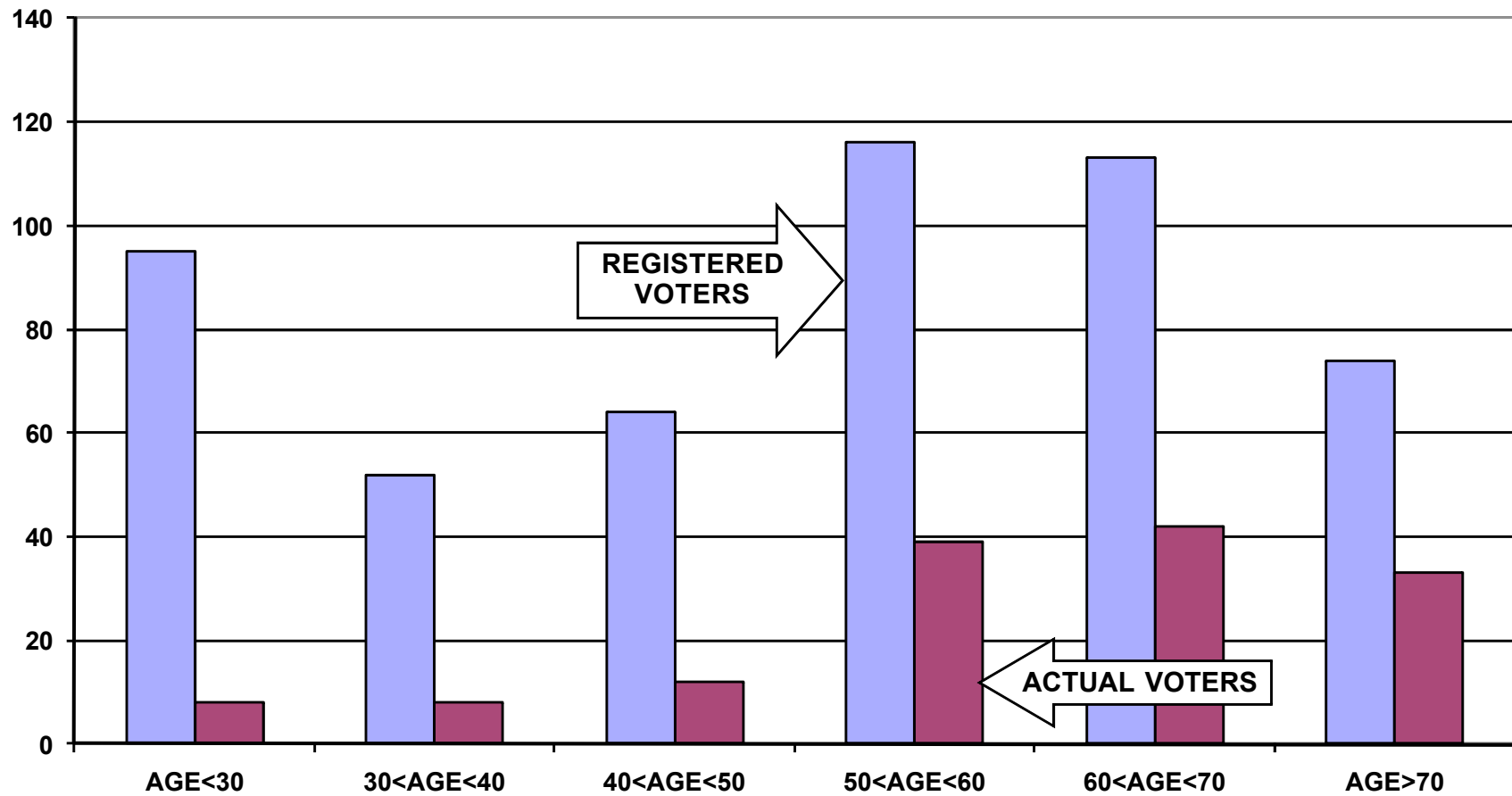
REGISTERED VOTER TURNOUT COMPARISON OF RHODE ISLAND AND THE PORTUGUESE SOCIAL CLUB HEADS OF HOUSEHOLD



**DIFFERENCE IN VOTER TURNOUT BETWEEN
THE PORTUGUESE SOCIAL CLUB VOTERS AND
RHODE ISLAND VOTERS
HEADS OF HOUSEHOLD**



**REGISTERED VOTERS VERSUS ACTUAL VOTERS SEPTEMBER 2010
PORTUGUESE SOCIAL CLUB
ALL HOUSEHOLD MEMBERS**



**REGISTERED VOTERS VERSUS ACTUAL VOTERS NOVEMBER 2010
PORTUGUESE SOCIAL CLUB
ALL HOUSEHOLD MEMBERS**

