

THE PORTUGUESE AMERICAN CITIZENSHIP PROJECT
A NON-PARTISAN INITIATIVE TO PROMOTE CITIZENSHIP AND CIVIC INVOLVEMENT

SACRED HEART PARISH
PROVIDENCE, RHODE ISLAND

EVALUATION
OF
THE 2010 ELECTIONS



September 1, 2011

SUPPORTED BY THE


REGIÃO AUTÓNOMA DOS AÇORES
PRESIDÊNCIA DO GOVERNO
Secretário Regional da Presidência
Direcção Regional das Comunidades

LUSO-AMERICAN
FOUNDATION

REPORT CONTENTS

STATISTICS AND SUMMARY OF WORK	3
RESULTS	4
RECOMMENDATIONS	7
APPENDIX	8

KEY STATISTICS

- **Number of Members in Rhode Island: 704**
- **Heads of Household registered to vote in Rhode Island: 203 (29% of all parishioners)**
- **All Household Members registered to vote in Rhode Island: 351**
- **Heads of Household voter turnout¹ in September 2010 – 37% (statewide turnout 18%)**
- **Heads of Household voter turnout in November 2010 – 52% (statewide turnout 50%)**

SUMMARY OF WORK

Sacred Heart has been an active participant in the Portuguese American Citizenship Project since late 2002.

For the 2010 September Primary Elections and the November General Elections, no postcards in either Portuguese or English were sent to the registered voters in the parish reminding them of the date, location, and polling hours for each election.

¹ Voter turnout is the number of citizens voting in an election divided by the total number of citizens registered to vote. Voter turnout for each election is based on Rhode Island residents only.

RESULTS

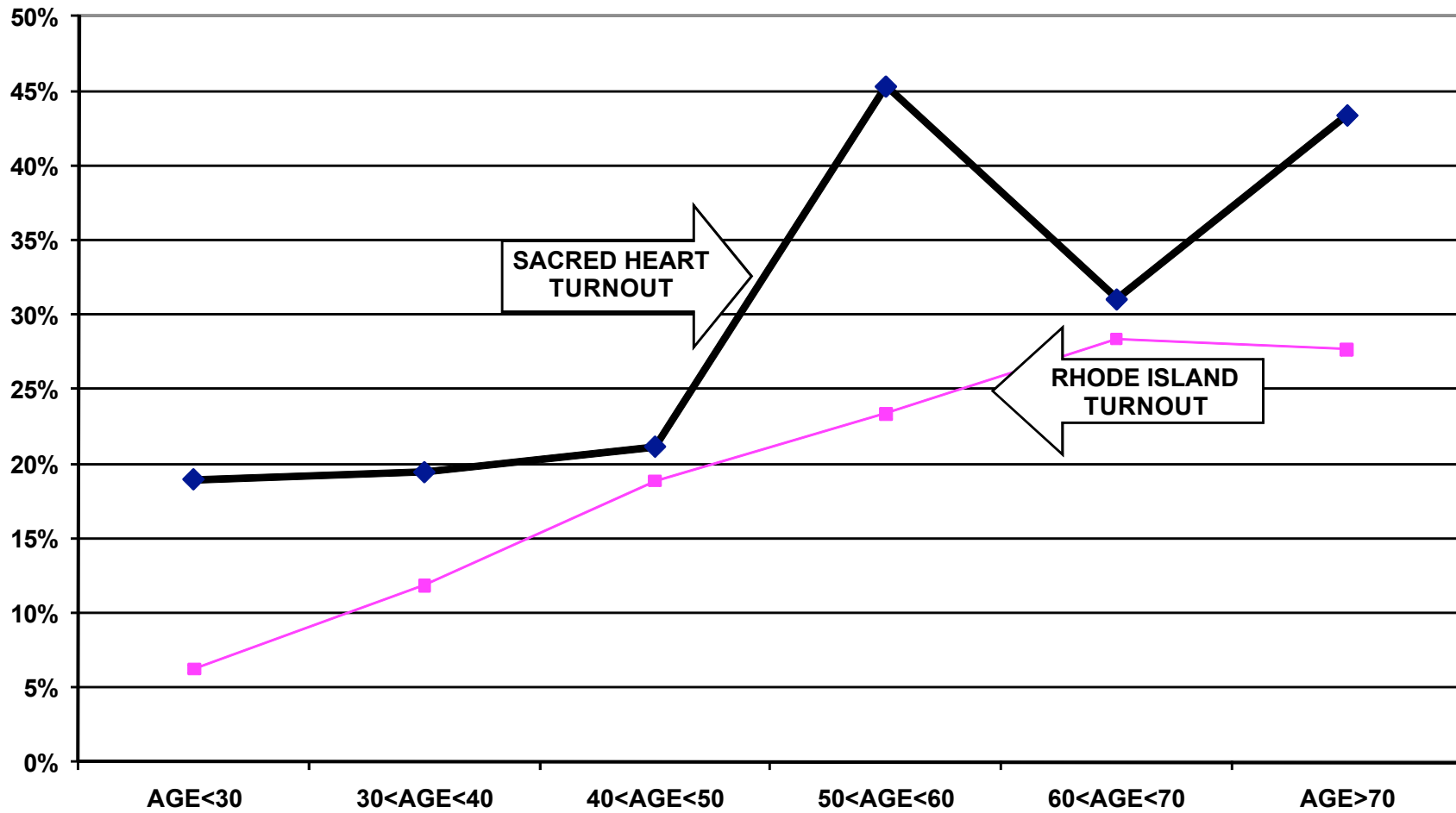
Sacred Heart's heads of household voter turnout was higher than the statewide turnout in the 2010 September Primary Election and the November General Election. Heads of household turnout for the September Primary Elections was 37%, as compared to the state turnout of 18%. Sacred Heart's heads of household turnout for the November General Election was 52%, as compared to the state turnout of 50%.

Voter turnout is not uniform across age groups. Voters under 30 years of age and even those between 30 and 40 years old had lower turnout rates than the older voters. This is true among all registered voters associated with the parish and among registered voters in the community at large.

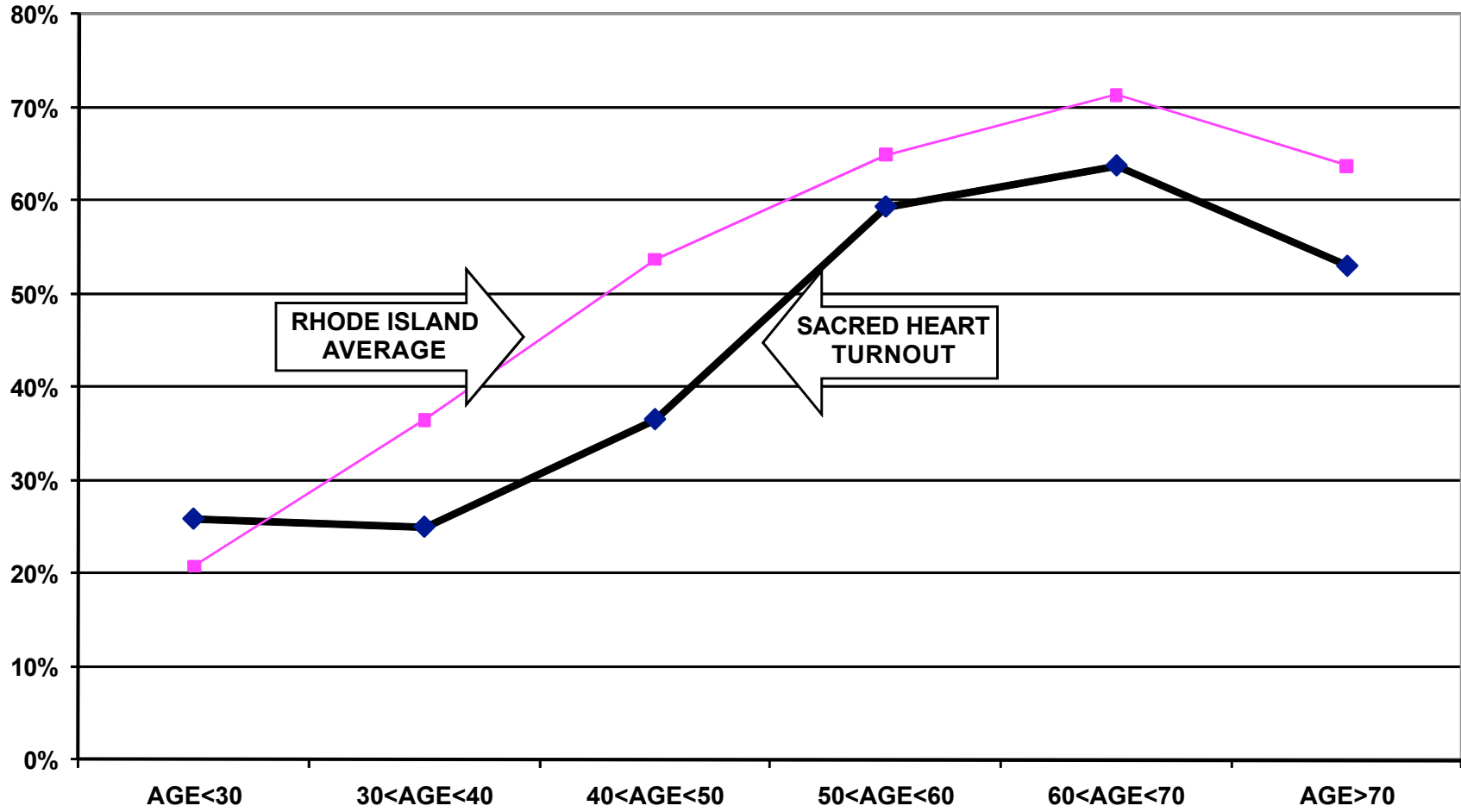
For example, registered voters that are associated with Sacred Heart under 30 years old had a 19% turnout rate in the September Primary elections, while those between 60 and 70 years old had a 31% turnout rate. For the November General elections, the under 30 years old associated voters had a 26% turnout rate, compared to a 64% turnout rate among parishioners between 60 and 70 years old.

The following graphs for the 2010 September and November elections illustrate the relationship between turnout rates and age. These graphs refer to all family members associated with the group, not just heads of household.

TURNOUT BY AGE SEPTEMBER 2010 SACRED HEART PARISH ALL HOUSEHOLD MEMBERS



TURNOUT BY AGE NOVEMBER 2010 SACRED HEART PARISH ALL HOUSEHOLD MEMBERS



RECOMMENDATIONS

- The parish must determine if and how it will provide funding for the costs of participation in the Citizenship Project. After 10 years of full financial support for the Project, the Luso American Foundation significantly reduced its funding in 2009. In 2011, the Project will continue to provide data processing and assist in the preparation of voter cards.
- If the parish cannot provide the financial support for this mailing and/or cannot accomplish the logistics of printing and mailing the voter cards, interested members of the community should examine the accomplishments of the past ten years and determine how to build on these achievements using alternative methods of promoting civic participation.

APPENDIX

Historical Data	9
Registered Voter Turnout Bar Graph	10
Difference in Voter Turnout Bar Graph	11
Registered Voters vs. Actual Voters September 2010 Bar Graph	12
Registered Voters vs. Actual Voters November 2010 Bar Graph	13

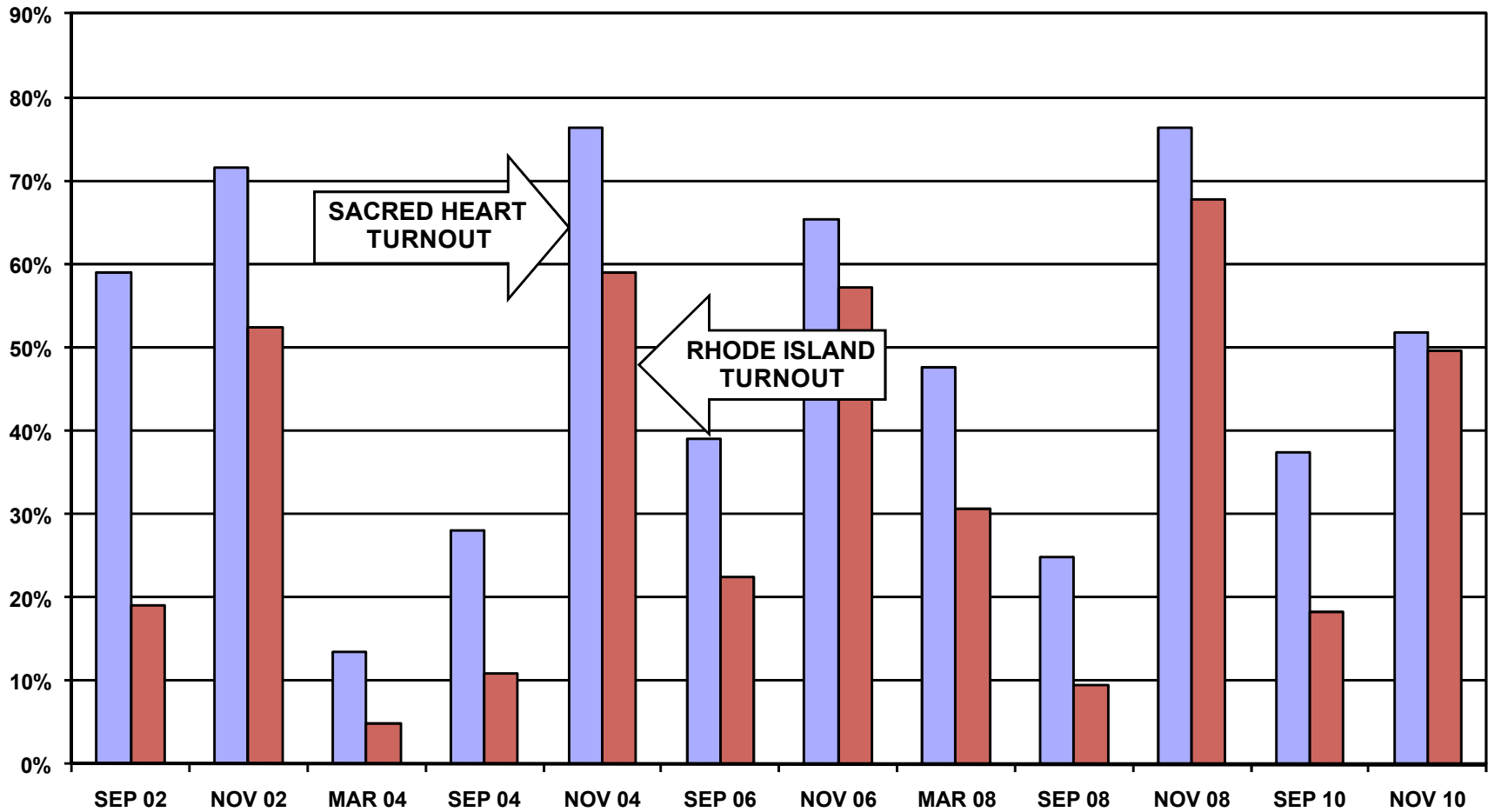
**SACRED HEART
REGISTRATION - VOTING**

MEMBERS	704
MEMBERS REGISTERED TO VOTE IN STATE OF RHODE ISLAND	203 HEADS OF HOUSEHOLD
	351 ALL FAMILY MEMBERS

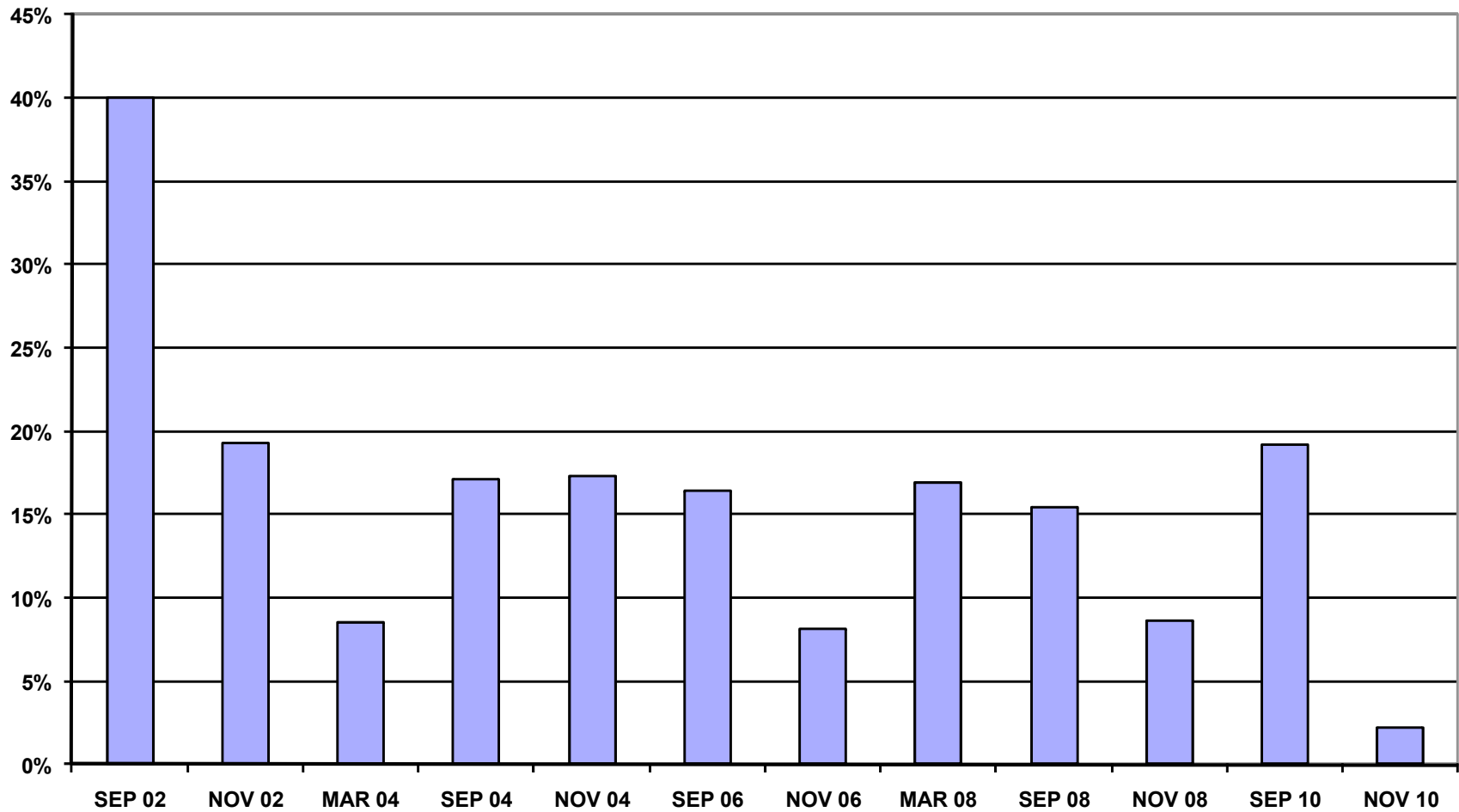
VOTING PERFORMANCE OF RHODE ISLAND RESIDENTS

	MEMBERS VOTING	AS PERCENT OF ALL REGISTERED MEMBERS ELIGIBLE TO VOTE	STATE WIDE VOTING HISTORY (AS PERCENT OF ALL REGISTERED VOTERS)
		COMPARABLE STATISTICS	
VOTERS SEP 2000	81	32.1%	13.3%
VOTERS NOV 2000	220	85.6%	58.6%
VOTERS SEP 2002	170	59.0%	19.0%
VOTERS NOV 2002	207	71.6%	52.3%
VOTERS MAR 2004	40	13.5%	4.9%
VOTERS SEP 2004	84	28.0%	10.9%
VOTERS NOV 2004	229	76.3%	59.0%
VOTERS SEP 2006	109	38.9%	22.5%
VOTERS NOV 2006	183	65.4%	57.2%
VOTERS MAR 2008	111	47.6%	30.7%
VOTERS SEP 2008	58	24.9%	9.4%
VOTERS NOV 2008	178	76.4%	67.8%
VOTERS SEP 2010	76	37.4%	18.2%
VOTERS NOV 2010	105	51.7%	49.5%

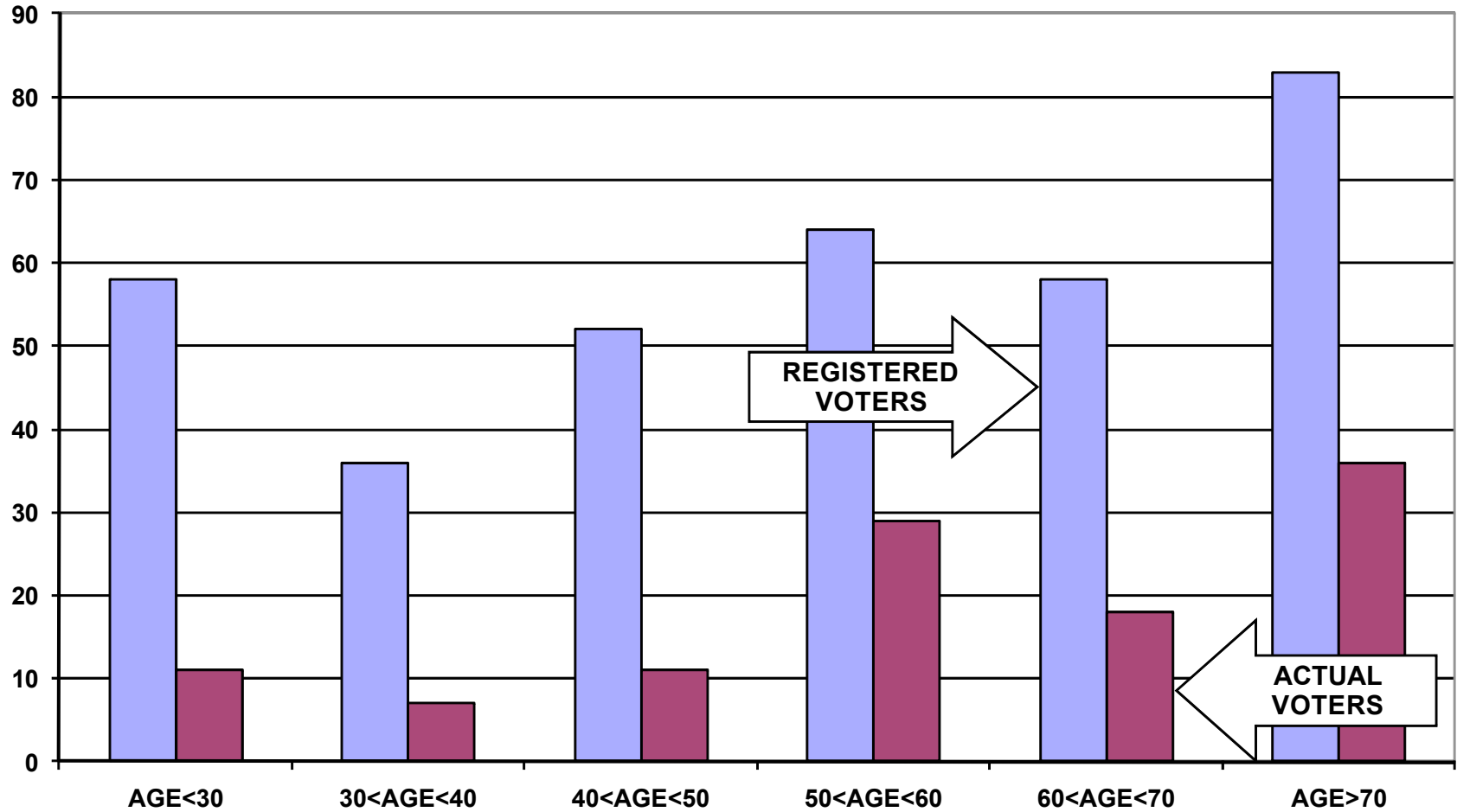
REGISTERED VOTER TURNOUT COMPARISON BETWEEN RHODE ISLAND AND SACRED HEART PARISH HEADS OF HOUSEHOLD



DIFFERENCE IN VOTER TURNOUT BETWEEN SACRED HEART PARISH VOTERS AND RHODE ISLAND VOTERS HEADS OF HOUSEHOLD



**REGISTERED VOTERS VERSUS ACTUAL VOTERS SEPTEMBER 2010
SACRED HEART PARISH
ALL HOUSEHOLD MEMBERS**



**REGISTERED VOTERS VERSUS ACTUAL VOTERS NOVEMBER 2010
SACRED HEART PARISH
ALL HOUSEHOLD MEMBERS**

