

THE PORTUGUESE AMERICAN CITIZENSHIP PROJECT
A NON-PARTISAN INITIATIVE TO PROMOTE CITIZENSHIP AND CIVIC INVOLVEMENT

CLUBE JUVENTUDE LUSITANIA
CUMBERLAND, RHODE ISLAND

EVALUATION
OF
THE 2010 ELECTIONS

September 1, 2011

SUPPORTED BY THE


REGIÃO AUTÓNOMA DOS AÇORES
PRESIDÊNCIA DO GOVERNO
Secretário Regional da Presidência
Direcção Regional das Comunidades

LUSO-AMERICAN
FOUNDATION

REPORT CONTENTS

STATISTICS AND SUMMARY OF WORK	3
RESULTS	4
RECOMMENDATIONS	7
APPENDIX	8

KEY STATISTICS

- **Number of Members in Rhode Island: 468**
- **Heads of Household registered to vote in Rhode Island: 225 (48% of all members)**
- **All Household Members registered to vote: 631**
- **Heads of Household voter turnout¹ in September 2010 – 37% (statewide turnout 18%)**
- **Heads of Household voter turnout in November 2010 – 56% (statewide turnout 50%)**

SUMMARY OF WORK

Clube Juventude Lusitania has been an active participant in the Portuguese American Citizenship Project since late 2002.

For the 2010 November General Elections, postcards in Portuguese and English were sent to every registered voter in the organization reminding them of the date, location, and polling hours for each election, however, no cards were sent for the September Primary Elections.

¹ Voter turnout is the number of citizens voting in an election divided by the total number of citizens registered to vote. Voter turnout for each election is based on Rhode Island residents only.

RESULTS

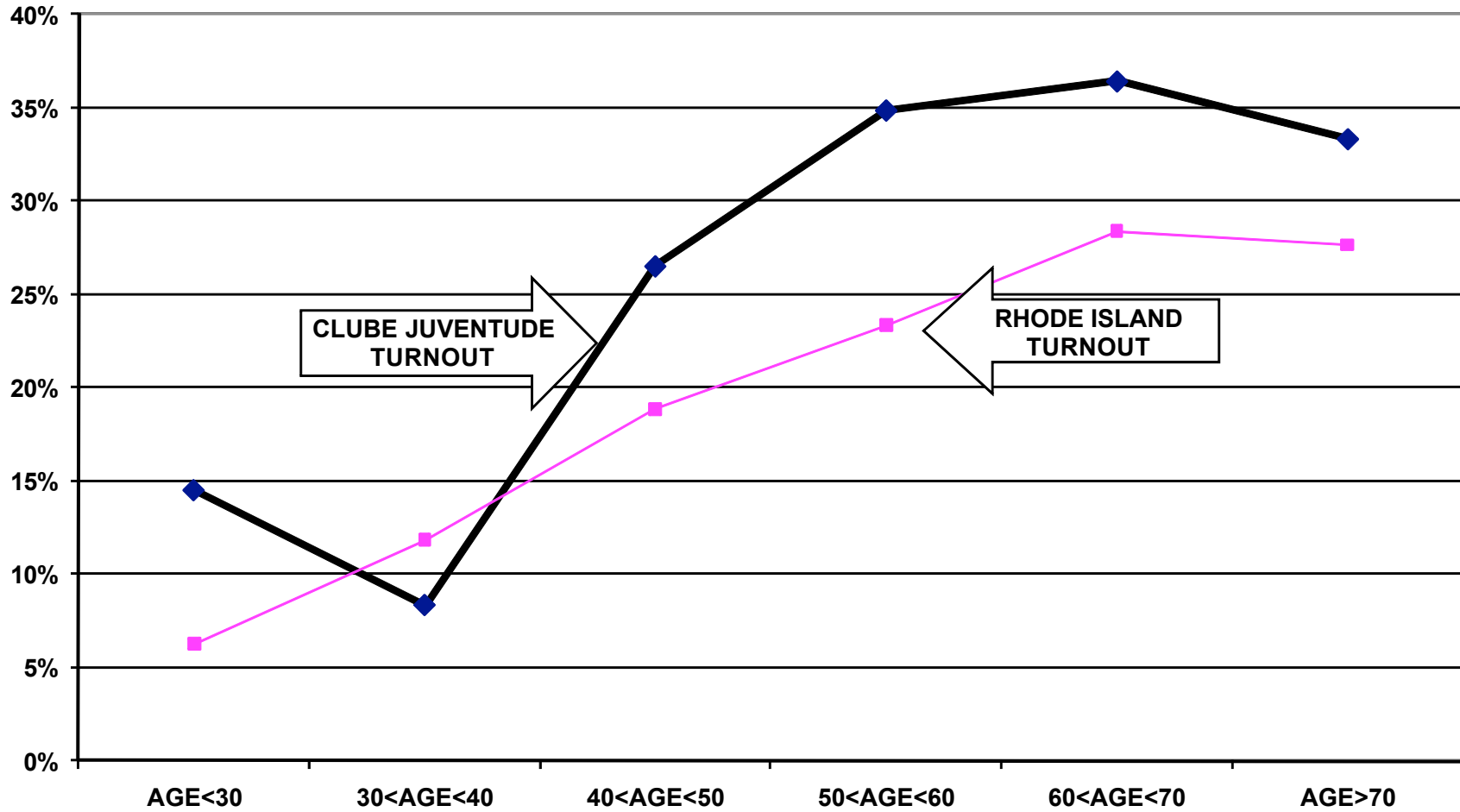
Clube Juventude Lusitania heads of household voter turnout was higher than the statewide turnout in the 2010 September Primary Election and the November General Elections. Heads of household turnout for the September Primary Elections was 37%, as compared to the state turnout of 18%. Clube Juventude Lusitania's heads of household turnout for the November General Elections was 56%, as compared to the state turnout of 50%.

Voter turnout is not uniform across age groups. Voters under 30 years of age and especially those between 30 and 40 years old had lower turnout rates than the older voters. This is true among all registered voters in the organization and among registered voters in the community at large.

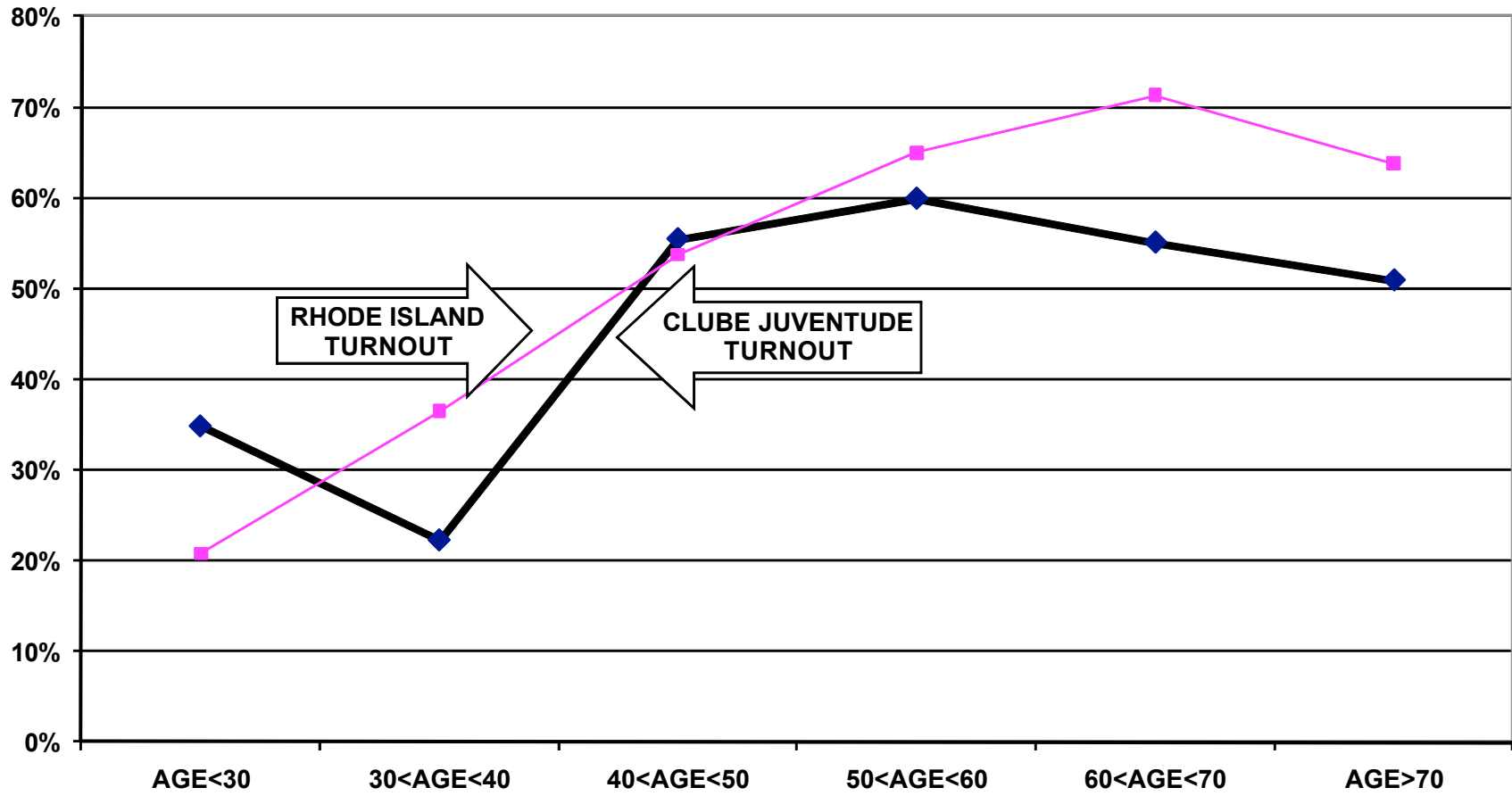
For example, voters under 30 years old associated with Clube Juventude Lusitania had a 15% turnout rate in the September Primary elections, while voters between 60 and 70 years old had a 36% turnout rate. For the November General elections, voters under 30 years old had a 35% turnout rate, while those between 60 and 70 years old had a 55% turnout rate.

The following graphs for the 2010 September and November elections illustrate the relationship between turnout rates and age. These graphs refer to all family members associated with the group, not just heads of household.

**TURNOUT BY AGE SEPTEMBER 2010
CLUBE JUVENTUDE LUSITANIA
ALL HOUSEHOLD MEMBERS**



TURNOUT BY AGE NOVEMBER 2010 CLUBE JUVENTUDE LUSITANIA ALL HOUSEHOLD MEMBERS



RECOMMENDATIONS

- The club must determine if and how it will provide funding for the costs of participation in the Citizenship Project. After 10 years of full financial support for the Project, the Luso American Foundation significantly reduced its funding in 2009. In 2011, the Project will continue to provide data processing and assist in the preparation of voter cards.
- If the club cannot provide the financial support for this mailing and/or cannot accomplish the logistics of printing and mailing the voter cards, interested members of the community should examine the accomplishments of the past ten years and determine how to build on these achievements using alternative methods of promoting civic participation.

APPENDIX

Historical Data	9
Registered Voter Turnout Bar Graph	10
Difference in Voter Turnout Bar Graph	11
Registered Voters vs. Actual Voters March 2010 Bar Graph	12
Registered Voters vs. Actual Voters November 2010 Bar Graph	13

**HISTORICAL DATA: CLUBE JUVENTUDE LUSITANIA
REGISTRATION - VOTING**

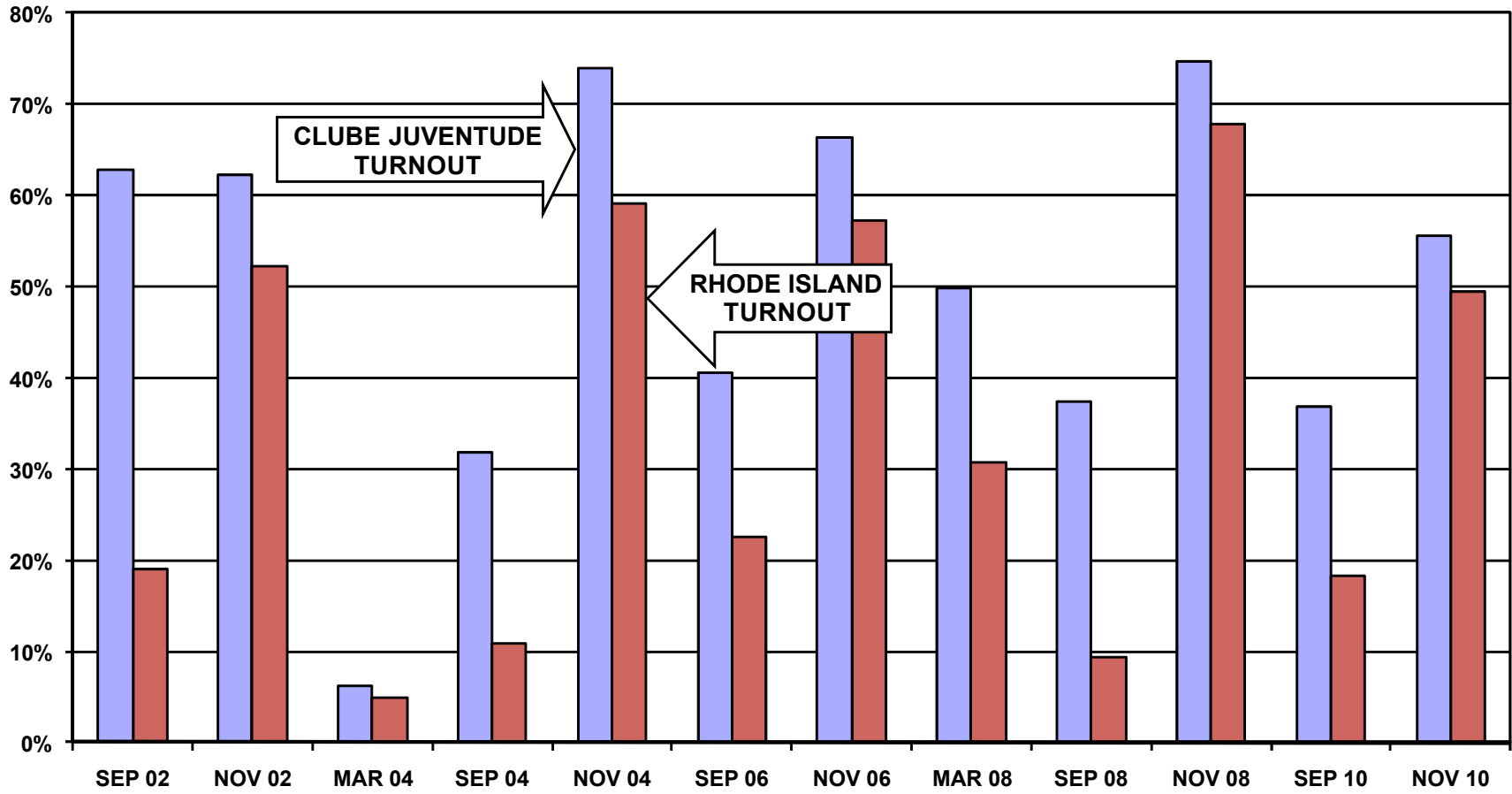
MEMBERS	468
MEMBERS REGISTERED TO VOTE IN RHODE ISLAND	225 HEADS OF HOUSEHOLD
	631 ALL FAMILY MEMBERS

VOTING PERFORMANCE OF RHODE ISLAND RESIDENTS

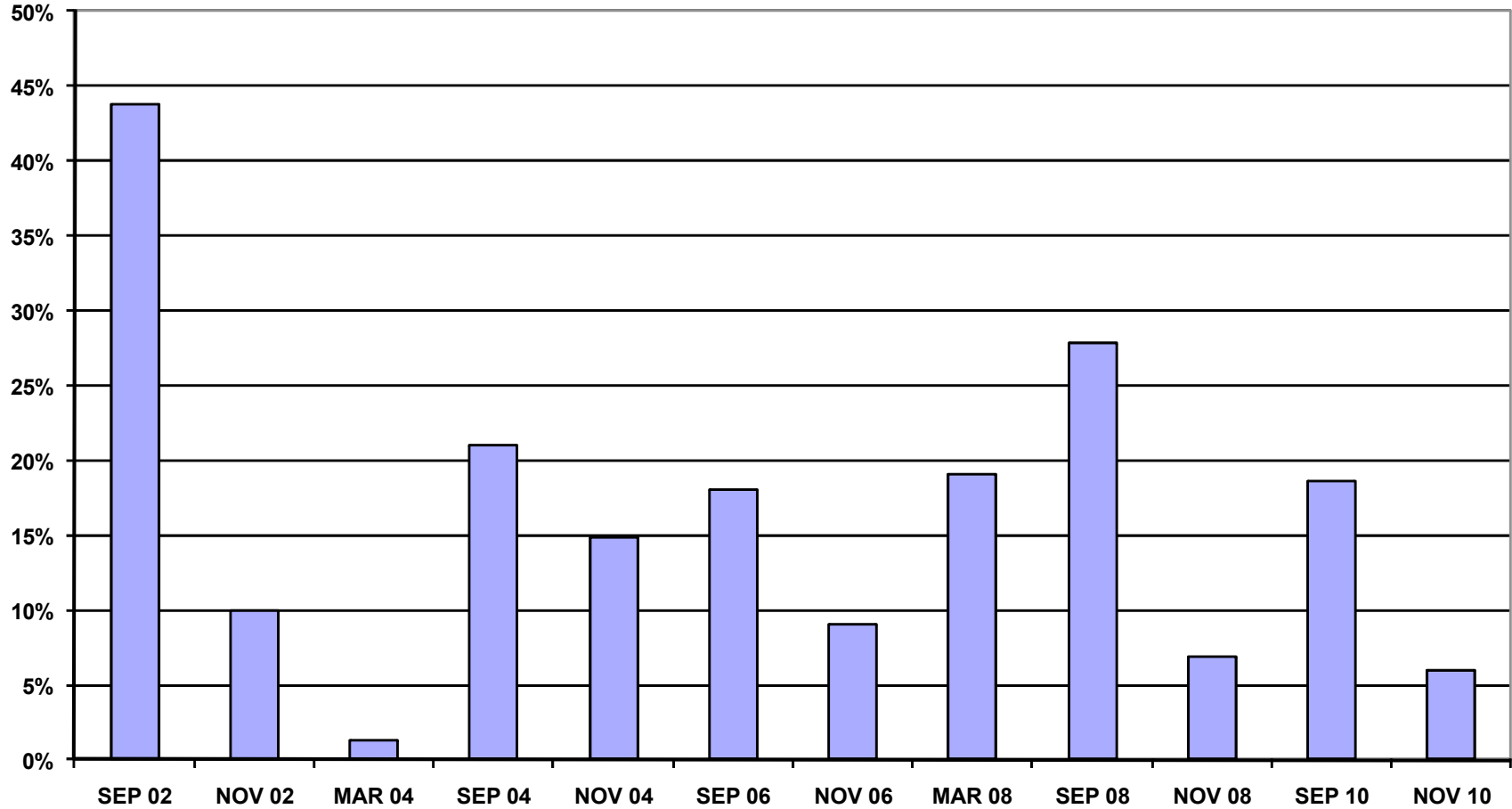
MEMBERS VOTING	AS PERCENT OF ALL REGISTERED MEMBERS ELIGIBLE TO VOTE	STATE WIDE VOTING HISTORY (AS PERCENT OF ALL REGISTERED VOTERS)
-----------------------	--	--

COMPARABLE STATISTICS			
VOTERS SEP 2000	84	40.2%	13.3%
VOTERS NOV 2000	165	77.1%	58.6%
VOTERS SEP 2002	147	62.8%	19.0%
VOTERS NOV 2002	149	62.3%	52.3%
VOTERS MAR 2004	15	6.2%	4.9%
VOTERS SEP 2004	79	31.9%	10.9%
VOTERS NOV 2004	184	73.9%	59.0%
VOTERS SEP 2006	101	31.9%	22.5%
VOTERS NOV 2006	165	73.9%	57.2%
VOTERS MAR 2008	120	49.8%	30.7%
VOTERS SEP 2008	90	37.3%	9.4%
VOTERS NOV 2008	180	74.7%	67.8%
VOTERS SEP 2010	83	36.9%	18.2%
VOTERS NOV 2010	125	55.6%	49.5%

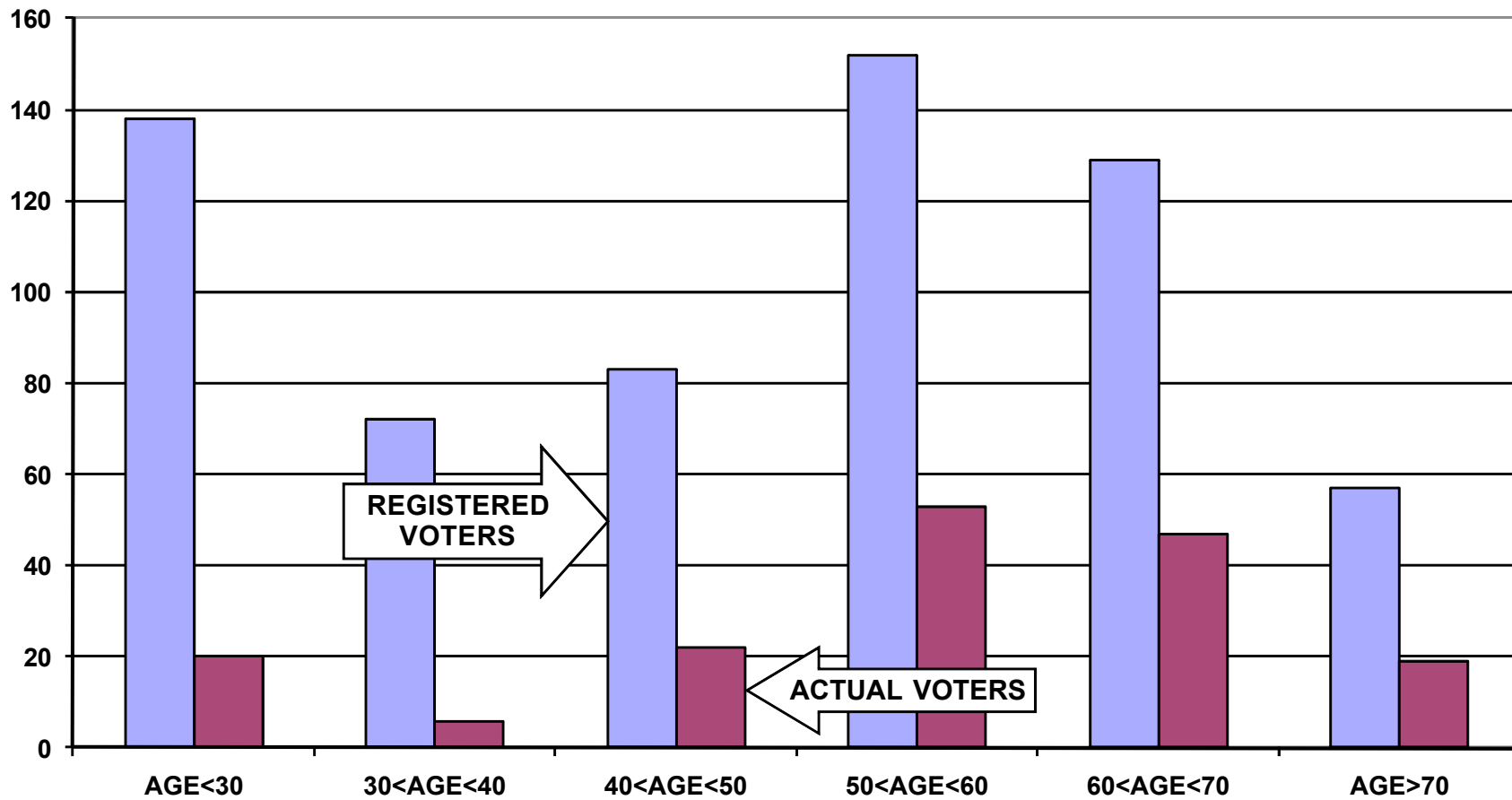
REGISTERED VOTER TURNOUT COMPARISON OF RHODE ISLAND AND CLUBE JUVENTUDE LUSITANIA HEADS OF HOUSEHOLD



**DIFFERENCE IN VOTER TURNOUT BETWEEN
CLUBE JUVENTUDE LUSITANIA VOTERS AND
RHODE ISLAND VOTERS
HEADS OF HOUSEHOLD**



**REGISTERED VOTERS VERSUS ACTUAL VOTERS SEPTEMBER 2010
CLUBE JUVENTUDE LUSITANIA
ALL HOUSEHOLD MEMBERS**



**REGISTERED VOTERS VERSUS ACTUAL VOTERS NOVEMBER 2010
CLUBE JUVENTUDE LUSITANIA
ALL HOUSEHOLD MEMBERS**

