

**THE PORTUGUESE AMERICAN CITIZENSHIP PROJECT  
A NON-PARTISAN INITIATIVE TO PROMOTE CITIZENSHIP AND CIVIC INVOLVEMENT**



**AMIGOS DE TERCEIRA  
STATE OF RHODE ISLAND**

**EVALUATION  
OF  
THE 2010 ELECTIONS**

**September 1, 2011**

**SUPPORTED BY THE**

  
REGIÃO AUTÓNOMA DOS AÇORES  
PRESIDÊNCIA DO GOVERNO  
Secretário Regional da Presidência  
Direcção Regional das Comunidades

**LUSO-AMERICAN  
FOUNDATION**

# REPORT CONTENTS

<b>STATISTICS AND SUMMARY OF WORK</b>	<b>3</b>
<b>RESULTS</b>	<b>4</b>
<b>RECOMMENDATIONS</b>	<b>7</b>
<b>APPENDIX</b>	<b>8</b>

## KEY STATISTICS

- **Number of Members in Rhode Island: 989**
- **Heads of Household registered to vote in Rhode Island: 267**
- **All Household Members registered to vote in Rhode Island: 561**
- **Heads of Household voter turnout<sup>1</sup> in September 2010: 40% (statewide turnout 18%)**
- **Heads of Household voter turnout in November 2010: 64% (statewide turnout 50%)**

## SUMMARY OF WORK

Amigos de Terceira has been an active participant in the Portuguese American Citizenship Project since late 2002.

For the 2010 November General Elections, postcards in Portuguese and English were sent to every registered voter in the organization reminding them of the date and polling hours for each election, however, no cards were sent for the September Primary Elections.

---

<sup>1</sup> Voter turnout is the number of citizens voting in an election divided by the total number of citizens registered to vote. Voter turnout for each election is based on Rhode Island residents only.

## RESULTS

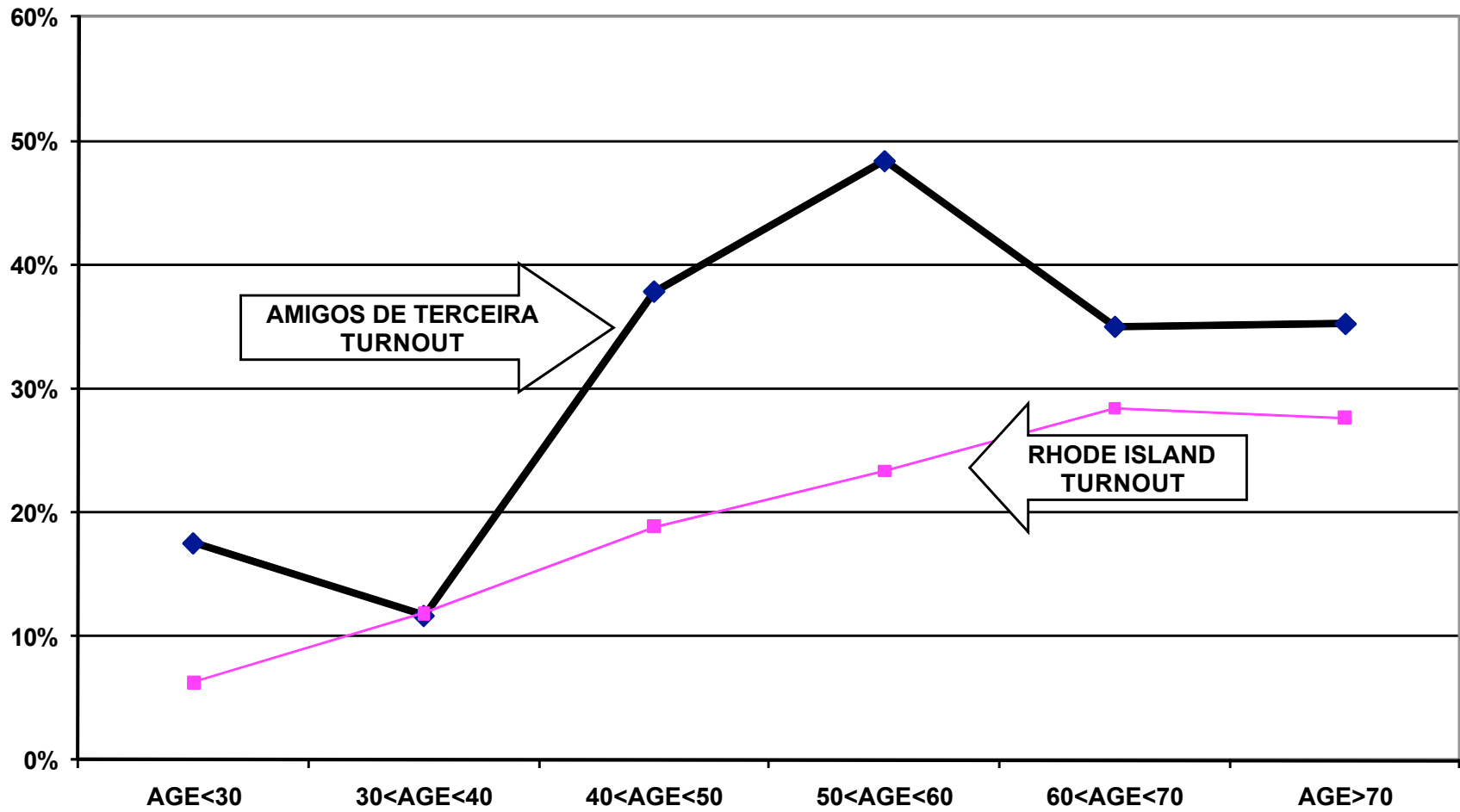
Amigos de Terceira's heads of household voter turnout was higher than the statewide turnout in the 2010 September Statewide Primary Election and the November Presidential Election. Heads of household turnout for the September Primary Elections was 40%, as compared to the state turnout of 18%. Amigos de Terceira's heads of household turnout for the November General Elections was 64%, as compared to the state turnout of 50%.

Voter turnout is not uniform across age groups. Voters under 30 years of age and even those between 30 and 40 years old had lower turnout rates than the older voters. This is true among all registered voters in the organization and among registered voters in the community at large.

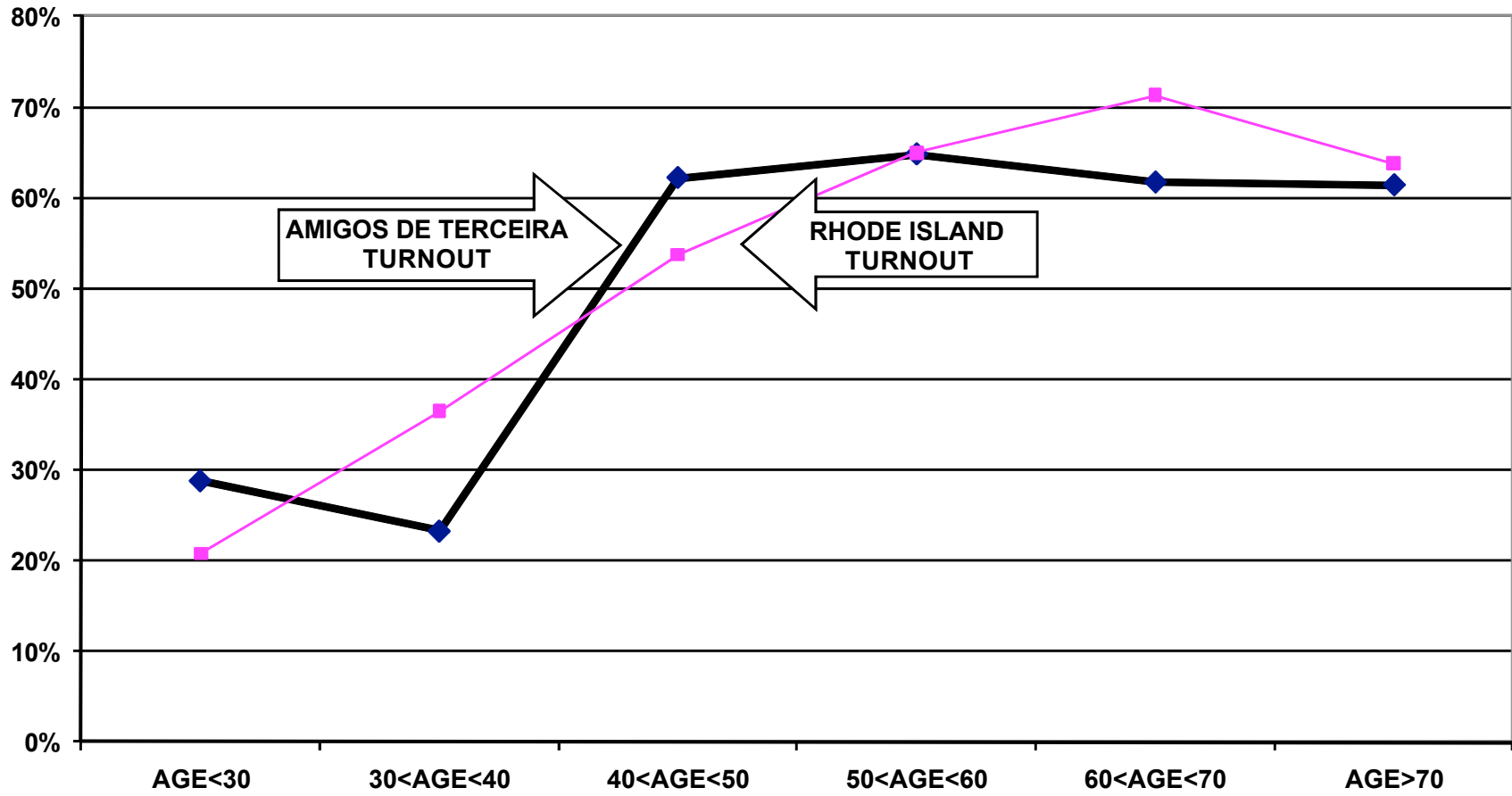
For example, voters under 30 years old associated with Amigos de Terceira had a 18% turnout rate in the September Primary elections, while voters between 60 and 70 years old had a 35% turnout rate. For the November General elections, voters under 30 years old had a 29% turnout rate, while those between 60 and 70 years old had a 62% turnout rate.

The following graphs for the 2010 September and November elections illustrate the relationship between turnout rates and age. These graphs refer to all family members associated with the group, not just heads of household.

### TURNOUT BY AGE SEPTEMBER 2010 AMIGOS DE TERCEIRA ALL HOUSEHOLD MEMBERS



### TURNOUT BY AGE NOVEMBER 2010 AMIGOS DE TERCEIRA ALL HOUSEHOLD MEMBERS



## RECOMMENDATIONS

- The club must determine if and how it will provide funding for the costs of participation in the Citizenship Project. After 10 years of full financial support for the Project, the Luso American Foundation significantly reduced its funding in 2009. In 2011, the Project will continue to provide data processing and assist in the preparation of voter cards.
- If the club cannot provide the financial support for this mailing and/or cannot accomplish the logistics of printing and mailing the voter cards, interested members of the community should examine the accomplishments of the past ten years and determine how to build on these achievements using alternative methods of promoting civic participation.

# APPENDIX

Historical Data	9
Registered Voter Turnout Bar Graph	10
Difference in Voter Turnout Bar Graph	11
Registered Voters vs. Actual Voters September 2010 Bar Graph	12
Registered Voters vs. Actual Voters November 2010 Bar Graph	13



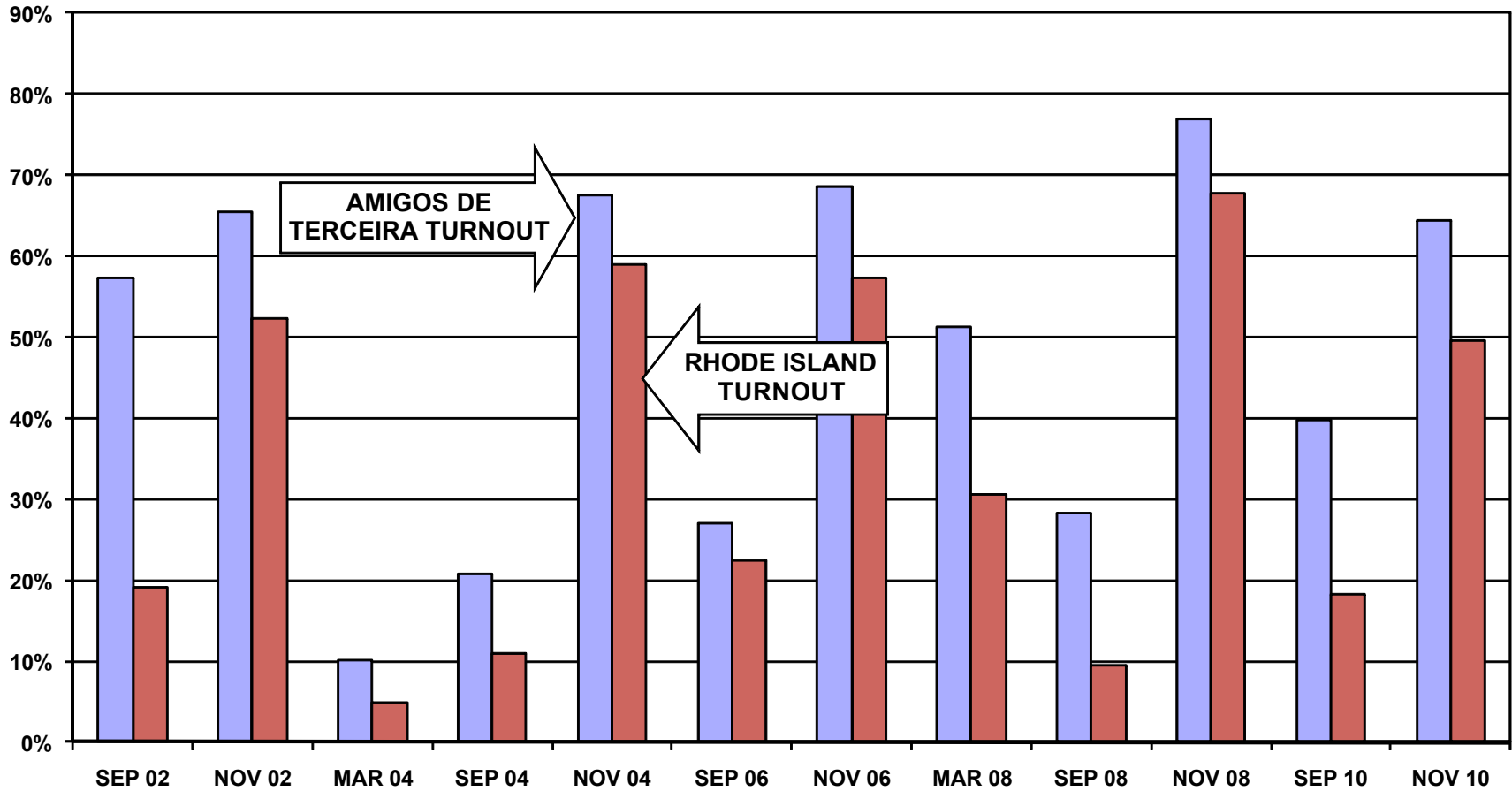
**HISTORICAL DATA: AMIGOS DE TERCEIRA  
REGISTRATION - VOTING**

<b>MEMBERS</b>	<b>989</b>
<b>MEMBERS REGISTERED TO VOTE IN RHODE ISLAND</b>	<b>267 HEADS OF HOUSEHOLD</b>
	<b>561 ALL FAMILY MEMBERS</b>

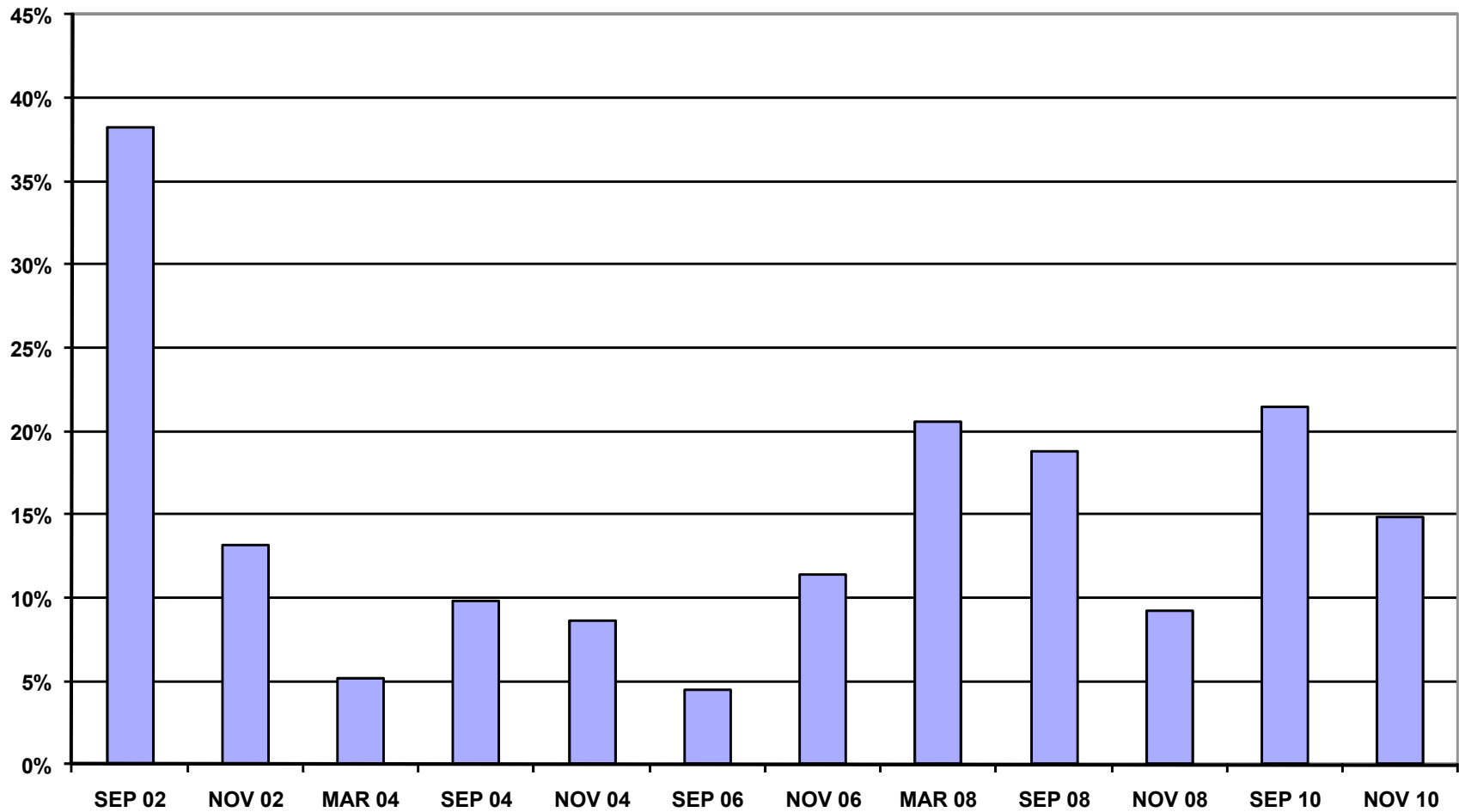
**VOTING PERFORMANCE OF RHODE ISLAND RESIDENTS**

	<b>HEADS OF HOUSEHOLD</b>	<b>AS PERCENT OF ALL REGISTERED MEMBERS ELIGIBLE TO VOTE</b>	<b>STATEWIDE VOTING HISTORY (AS PERCENT OF ALL REGISTERED VOTERS)</b>
		<b>COMPARABLE STATISTICS</b>	
<b>VOTERS SEP 2002</b>	<b>165</b>	<b>57.3%</b>	<b>19.0%</b>
<b>VOTERS NOV 2002</b>	<b>198</b>	<b>65.5%</b>	<b>52.3%</b>
<b>VOTERS MAR 2004</b>	<b>31</b>	<b>10.1%</b>	<b>4.9%</b>
<b>VOTERS SEP 2004</b>	<b>64</b>	<b>20.7%</b>	<b>10.9%</b>
<b>VOTERS NOV 2004</b>	<b>211</b>	<b>67.6%</b>	<b>59.0%</b>
<b>VOTERS SEP 2006</b>	<b>81</b>	<b>27.0%</b>	<b>22.5%</b>
<b>VOTERS NOV 2006</b>	<b>206</b>	<b>68.7%</b>	<b>52.7%</b>
<b>VOTERS MAR 2008</b>	<b>145</b>	<b>51.2%</b>	<b>30.7%</b>
<b>VOTERS SEP 2008</b>	<b>80</b>	<b>28.3%</b>	<b>9.4%</b>
<b>VOTERS NOV 2008</b>	<b>218</b>	<b>77.0%</b>	<b>67.8%</b>
<b>VOTERS SEP 2010</b>	<b>106</b>	<b>39.7%</b>	<b>18.2%</b>
<b>VOTERS NOV 2010</b>	<b>172</b>	<b>64.4%</b>	<b>49.5%</b>

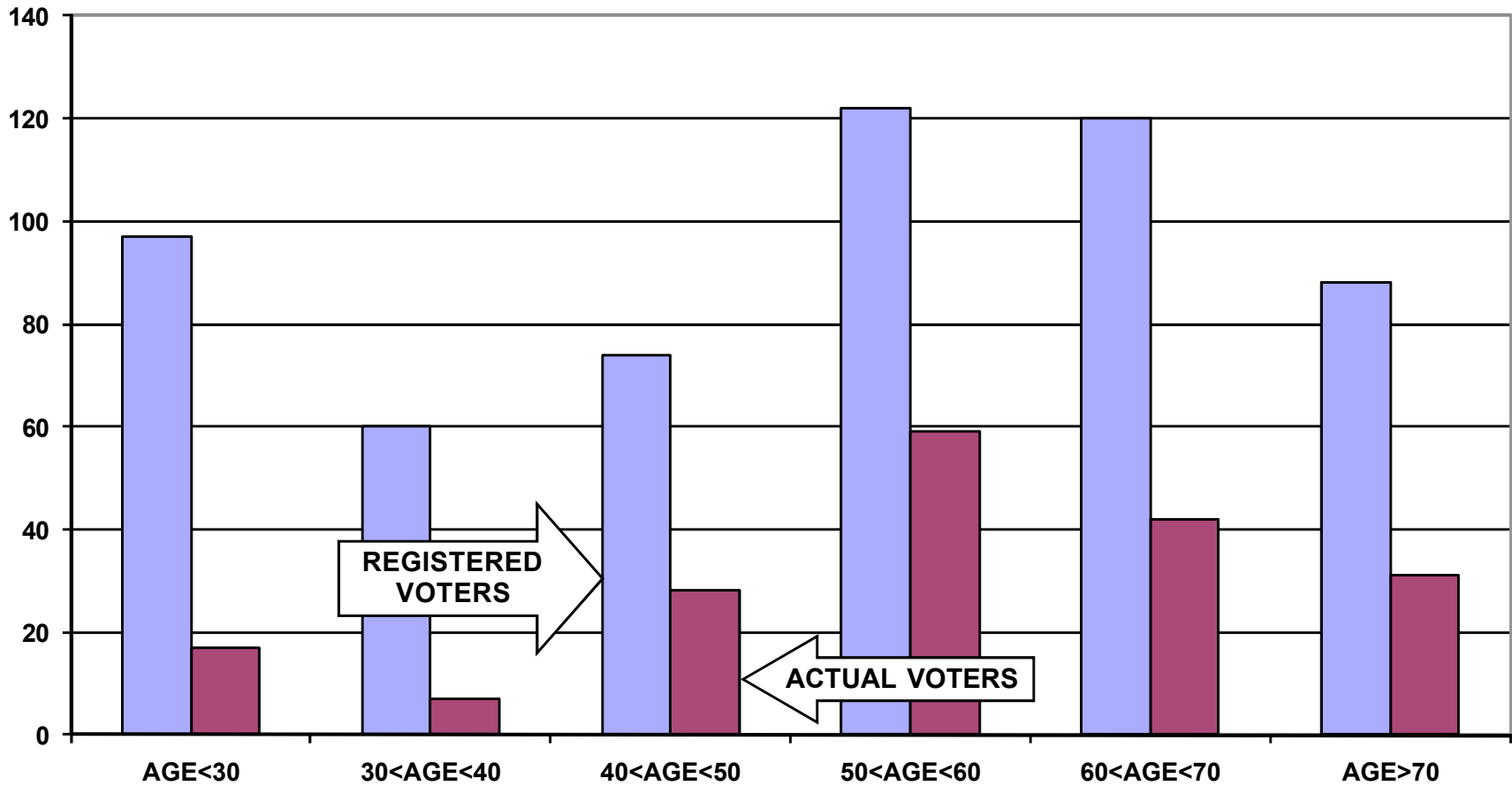
### REGISTERED VOTER TURNOUT COMPARISON BETWEEN RHODE ISLAND AND AMIGOS DE TERCEIRA HEADS OF HOUSEHOLD



### DIFFERENCE IN VOTER TURNOUT BETWEEN AMIGOS DE TERCEIRA VOTERS AND RHODE ISLAND VOTERS HEADS OF HOUSEHOLD



**REGISTERED VOTERS VERSUS ACTUAL VOTERS SEPTEMBER 2010  
AMIGOS DE TERCEIRA  
ALL HOUSEHOLD MEMBERS**



**REGISTERED VOTERS VERSUS ACTUAL VOTERS NOVEMBER 2010  
AMIGOS DE TERCEIRA  
ALL HOUSEHOLD MEMBERS**

