

THE PORTUGUESE AMERICAN CITIZENSHIP PROJECT
A NON-PARTISAN INITIATIVE TO PROMOTE CITIZENSHIP AND CIVIC INVOLVEMENT



PORTUGUESE INSTRUCTIVE SOCIAL CLUB
ELIZABETH, NEW JERSEY

EVALUATION OF
2008 ELECTIONS

April 8, 2010

SUPPORTED BY THE
LUSO-AMERICAN
FOUNDATION

REPORT CONTENTS

- **STATISTICS AND SUMMARY OF WORK** 3
- **RESULTS** 4
- **RECOMMENDATIONS** 8
- **APPENDIX** 9

KEY STATISTICS

- **Heads of Household: 747**
- **Heads of Household registered to vote in Elizabeth: 206**
- **All Household Members registered to vote in Elizabeth: 413**
- **Heads of Household voter turnout* in February 2008 – 53% (Elizabeth turnout 31%)**
- **Heads of Household voter turnout in June 2008 – 33% (Elizabeth turnout 17%)**
- **Heads of Household voter turnout in November 2008 – 76% (Elizabeth turnout 68%)**

SUMMARY OF WORK

The Portuguese Instructive and Social Club became an active participant in the Portuguese American Citizenship Project in 2007.

For the 2008 February, June, and November elections, postcards in Portuguese and English were sent to every registered voter in the organization reminding them of the date and polling hours for each election.

* Voter turnout is the number of citizens voting in an election divided by the total number of citizens registered to vote. Voter turnout graphs for each election are based on Elizabeth residents only.

RESULTS

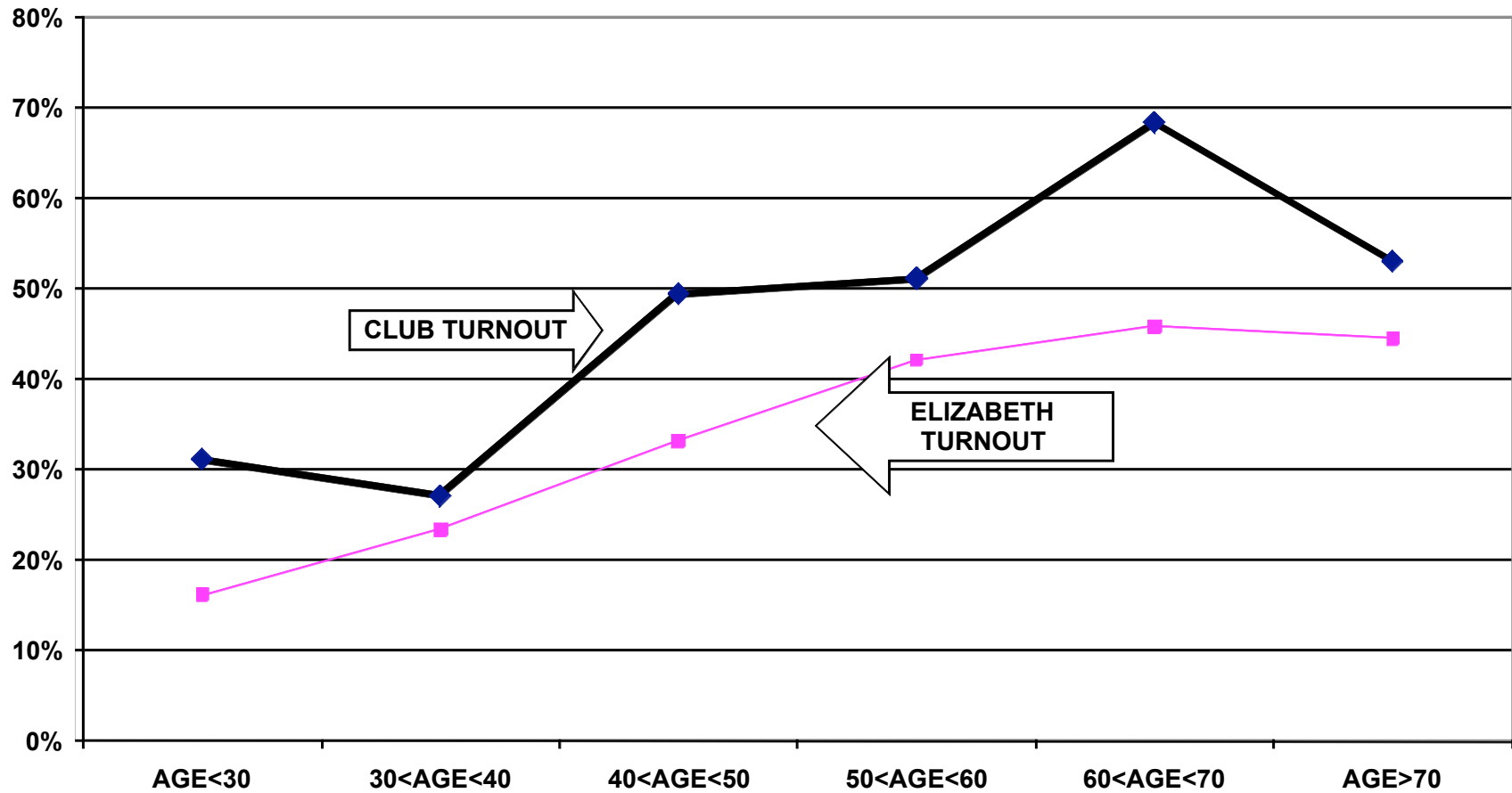
The Portuguese Instructive and Social Club heads of household voter turnout for the 2008 elections was higher than the citywide turnout. Heads of household turnout for the February Presidential Primary elections was 53%, as compared to the citywide turnout of 31%. For the June Primary elections heads of household turnout was 33%, as compared to the citywide turnout of 17%. The Club's heads of household turnout for the November Presidential election was 76%, as compared to the citywide turnout of 68%.

Voter turnout for all family members is not uniform across age groups. Voters under 30 years of age and even those between 30 and 40 years old had lower turnout rates than the older voters. This is true for the Club's associated voters and true for the registered voters in the community at large.

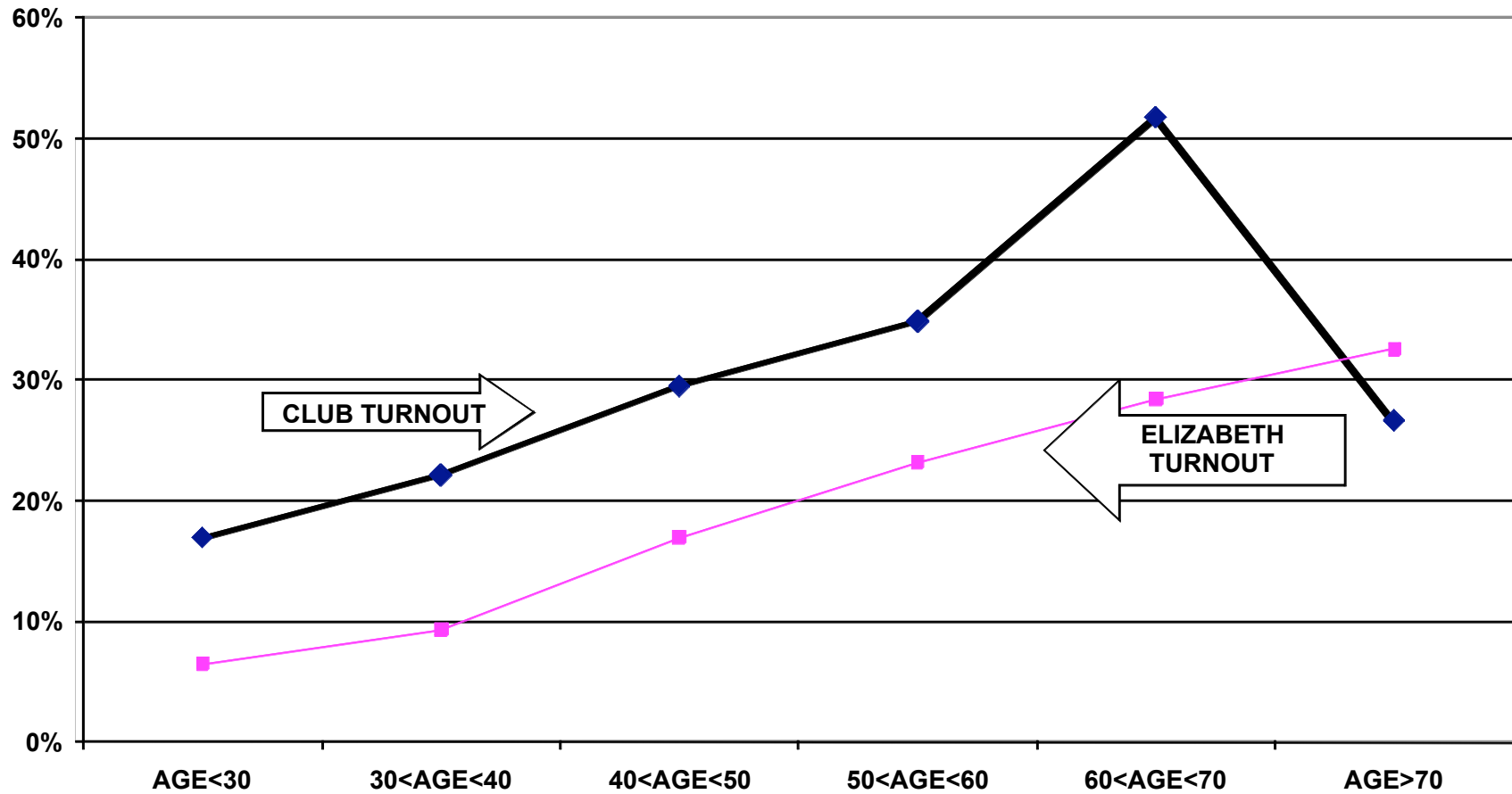
For example, registered voters associated with the club under 30 years old had a 31% turnout rate in the February elections, while voters between 60 and 70 years old had a 68% turnout rate. For the June elections, the under 30 year old associated voters had a 17% turnout rate compared to a 52% turnout rate for voters between 60 and 70 years old. However, voters associated with the Club under 30 years old had a 78% turnout rate in the November Presidential elections, and voters between 60 and 70 years old also had a 78% turnout rate.

The following graphs for the February, June, and November 2008 elections illustrate the relationship between turnout rates and age. These graphs refer to all family members associated with the Club, not just heads of household.

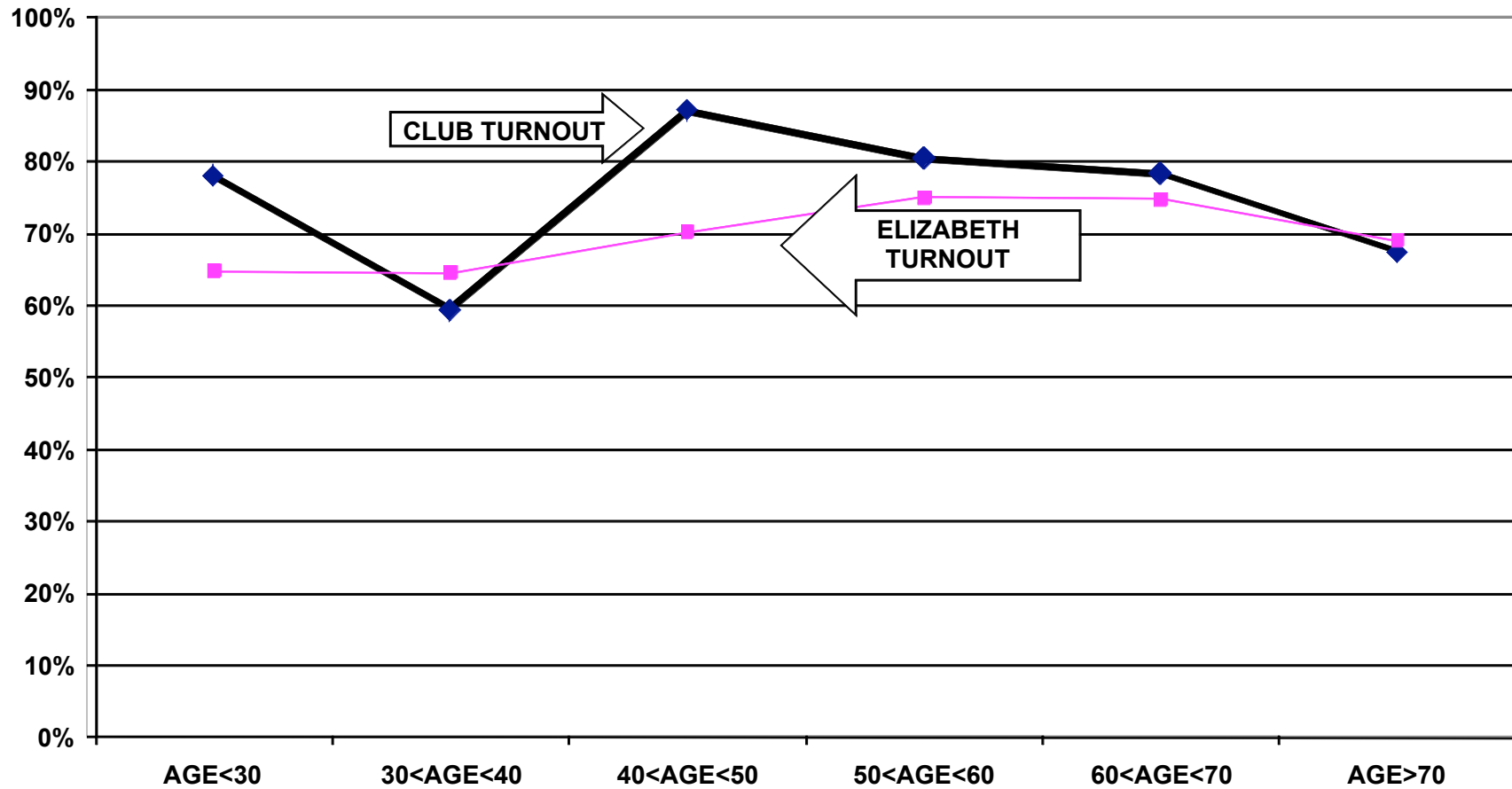
TURNOUT BY AGE FEBRUARY 2008 PORTUGUESE INSTRUCTIVE AND SOCIAL CLUB ALL HOUSEHOLD MEMBERS



**TURNOUT BY AGE JUNE 2008
PORTUGUESE INSTRUCTIVE AND SOCIAL CLUB
ALL HOUSEHOLD MEMBERS**



**TURNOUT BY AGE NOVEMBER 2008
PORTUGUESE INSTRUCTIVE AND SOCIAL CLUB
ALL HOUSEHOLD MEMBERS**



RECOMMENDATIONS

- The Club must determine if and how it will provide funding for the costs of participation in the Citizenship Project. The Luso American Foundation has completed 10 years of financial support for the Project but will terminate this support for 2009 and beyond. In 2010, the Project will continue to provide data processing and assist in the preparation of voter cards. The cost of preparing two elections is approximately \$80.
- If the Club cannot provide the financial support for mailing and/or cannot accomplish the logistics of printing and mailing the voter cards, interested members of the community should examine the accomplishments of the past ten years and determine how to build on these achievements using alternative methods of promoting civic participation.

APPENDIX

- Historical Data 10
- Registered Voter Turnout Graph 11
- Difference in Voter Turnout Graph 12
- Registered Voters vs. Actual Voters February 2008 Graph 13
- Registered Voters vs. Actual Voters June 2008 Graph 14
- Registered Voters vs. Actual Voters November 2008 Graph 15

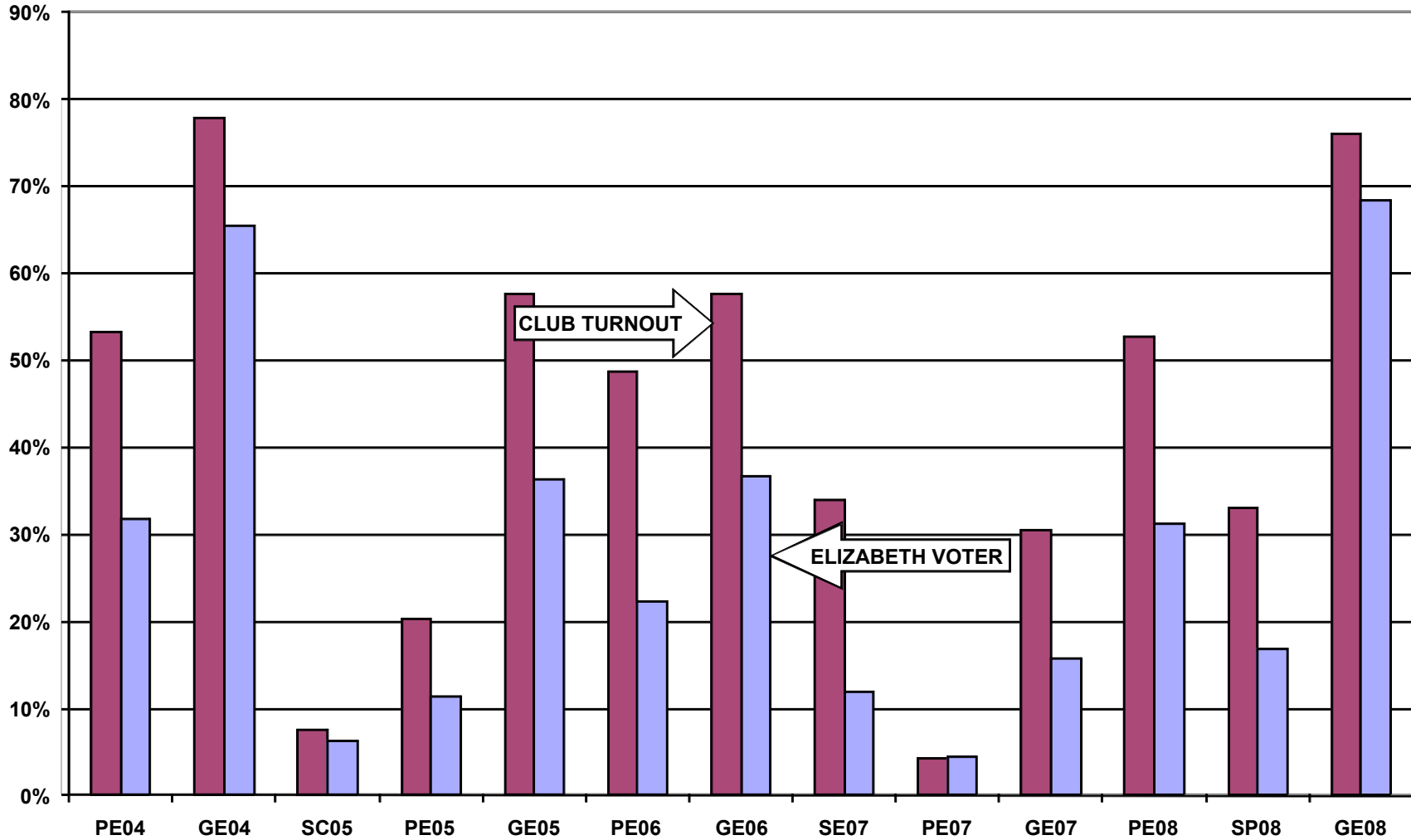
**HISTORICAL DATA: PORTUGUESE INSTRUCTIVE AND SOCIAL CLUB
REGISTRATION - VOTING**

ALL MEMBERS IN NEW JERSEY	747	
MEMBERS REGISTERED TO VOTE IN ELIZABETH	378	HEADS OF HOUSEHOLD
	422	ALL FAMILY MEMBERS

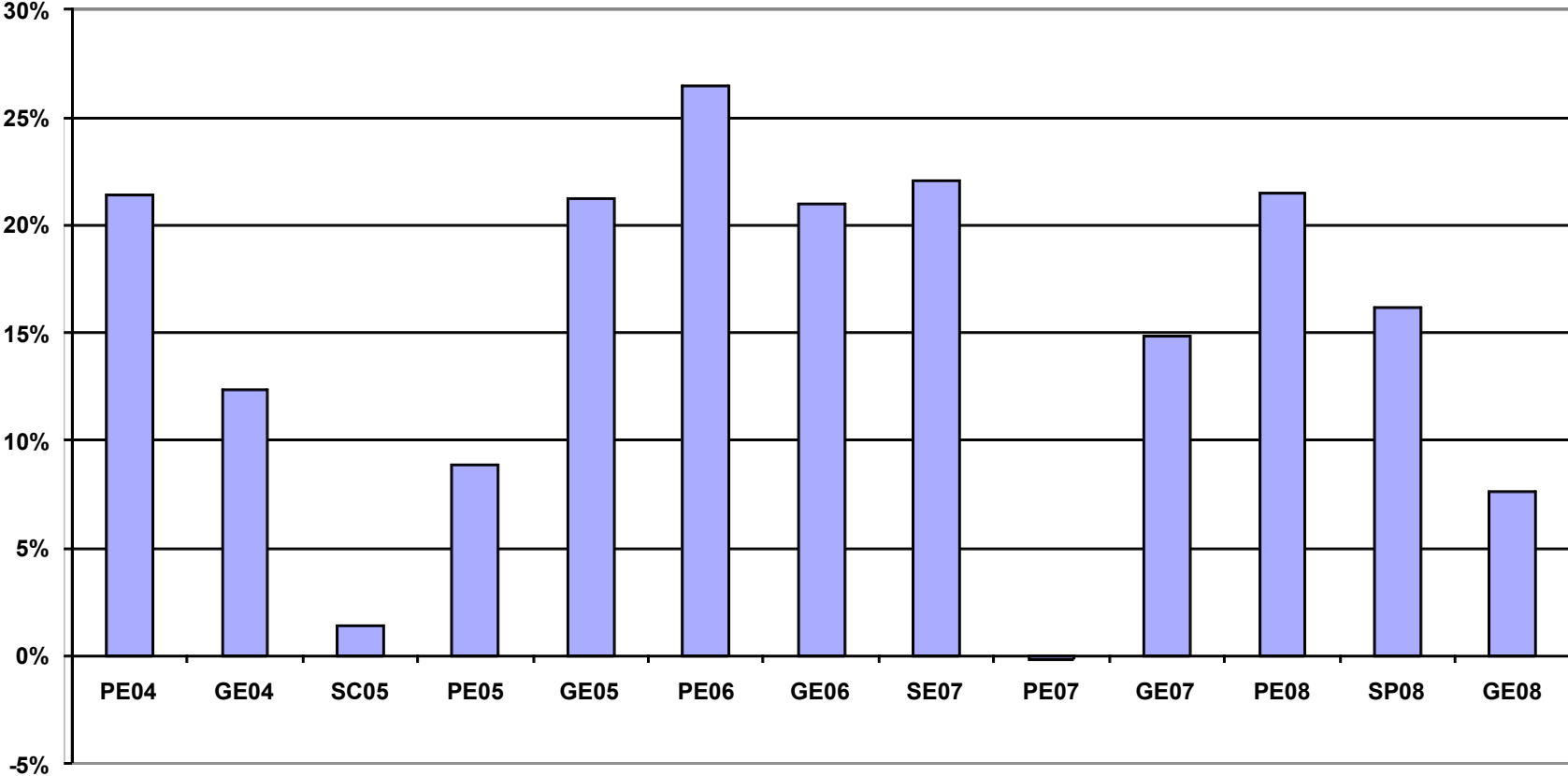
**VOTING PERFORMANCE OF
CITY OF ELIZABETH RESIDENTS**

CLUB MEMBERS VOTING (ELIZABETH)	AS PERCENT OF REGISTERED MEMBERS ELIGIBLE TO VOTE	CITYWIDE VOTING HISTORY (AS PERCENT OF ALL REGISTERED VOTERS)
	COMPARABLE STATISTICS	
GENERAL ELEC 2004	123	78 %
CITY ELEC 2005	12	8 %
PRIMARY ELEC 2005	32	20 %
GENERAL ELEC 2005	91	58 %
PRIMARY ELEC 2006	77	49 %
GENERAL ELEC 2006	91	58 %
SCHOOL ELEC 2007	70	34%
PRIMARY ELEC 2007	9	4%
GENERAL ELEC 2007	63	31%
PRIMARY ELEC 2008	199	53%
STATE PRIMARY 2008	125	33%
GENERAL ELEC 2008	287	76%
		66 %
		6 %
		11 %
		36 %
		22 %
		37 %
		12 %
		5 %
		16 %
		31 %
		17 %
		68 %

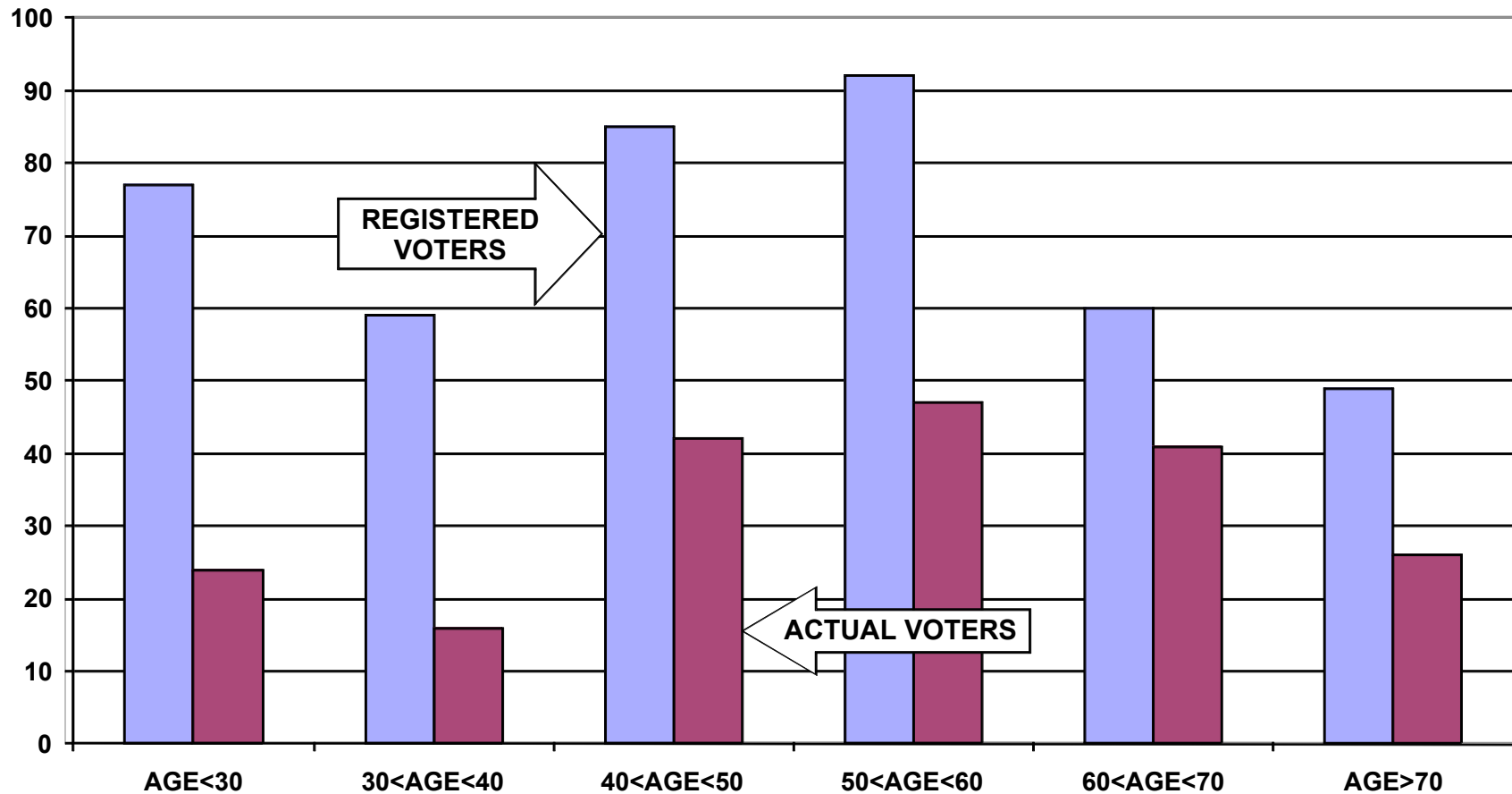
**REGISTERED VOTER TURNOUT COMPARISON OF ELIZABETH AND PORTUGUESE
INSTRUCTIVE AND SOCIAL CLUB
HEADS OF HOUSEHOLD**



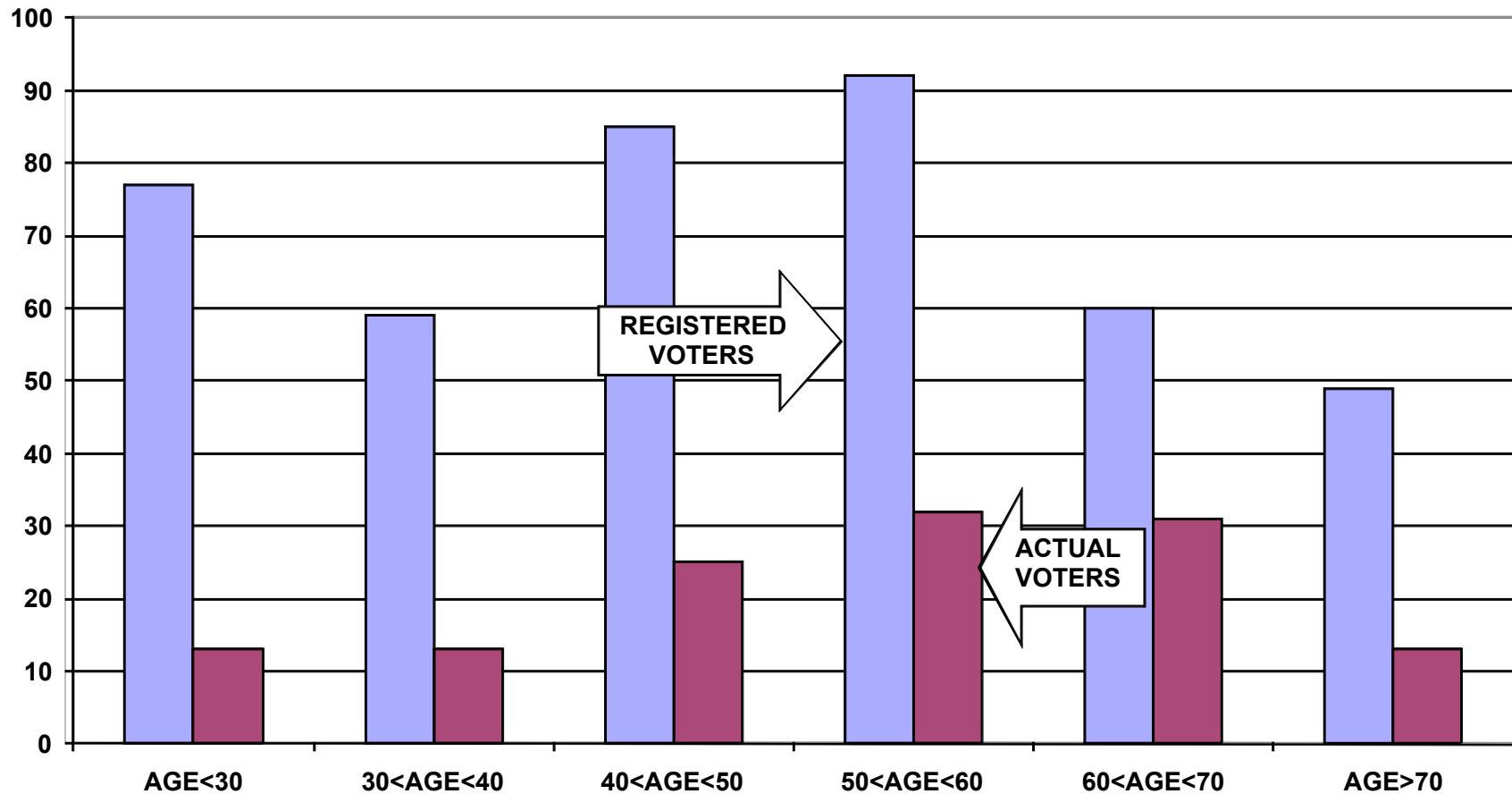
**DIFFERENCE IN VOTER TURNOUT BETWEEN THE PORTUGUESE
INSTRUCTIVE AND SOCIAL CLUB VOTERS AND ELIZABETH CITY
VOTERS
HEADS OF HOUSEHOLD**



**REGISTERED VOTERS VERSUS ACTUAL VOTERS FEBRUARY 2008
PORTUGUESE INSTRUCTIVE AND SOCIAL CLUB
ALL HOUSEHOLD MEMBERS**



**REGISTERED VOTERS VERSUS ACTUAL VOTERS JUNE 2008
PORTUGUESE INSTRUCTIVE AND SOCIAL CLUB
ALL HOUSEHOLD MEMBERS**



**REGISTERED VOTERS VERSUS ACTUAL VOTERS NOVEMBER 2008
PORTUGUESE INSTRUCTIVE AND SOCIAL CLUB
ALL HOUSEHOLD MEMBERS**

