

THE PORTUGUESE AMERICAN CITIZENSHIP PROJECT
A NON-PARTISAN INITIATIVE TO PROMOTE CITIZENSHIP AND CIVIC INVOLVEMENT



MOUNT CARMEL PARISH
NEW BEDFORD, MA

EVALUATION
OF
THE 2008 ELECTIONS

June 14, 2009

SUPPORTED BY THE
LUSO-AMERICAN
FOUNDATION

REPORT CONTENTS

- **STATISTICS AND SUMMARY OF WORK** 3
- **RESULTS** 4
- **RECOMMENDATIONS** 8
- **APPENDIX** 9

KEY STATISTICS

- **Total number of parishioners in Mount Carmel: 4,170**
- **Heads of Household registered to vote New Bedford: 1,866 (50% of all parishioners in New Bedford)**
- **Heads of Household registered to vote in Bristol County: 2,560**
- **All Household Members registered to vote in New Bedford: 2,575**
- **All Household Members registered to vote in Bristol County: 3,388**
- **Heads of Household in New Bedford voter turnout* in February 2008 – 50% (citywide turnout 32%)**
- **Heads of Household in New Bedford voter turnout in September 2008 – 26% (citywide turnout 14%)**
- **Heads of Household in New Bedford voter turnout in November 2008 – 78% (citywide turnout 61%)**

SUMMARY OF WORK

Mount Carmel has been an active participant in the Portuguese American Citizenship Project since 2002.

For the 2008 elections, postcards in Portuguese and English were sent to every registered parish voter reminding them of the date, polling hours, and location of the assigned polling station for the election. Cards were not sent out for February 2008 Presidential Primary Elections.

* Voter turnout is the number of citizens voting in an election divided by the total number of citizens registered to vote. Voter turnout statistics and graphs are based on New Bedford residents only.

RESULTS

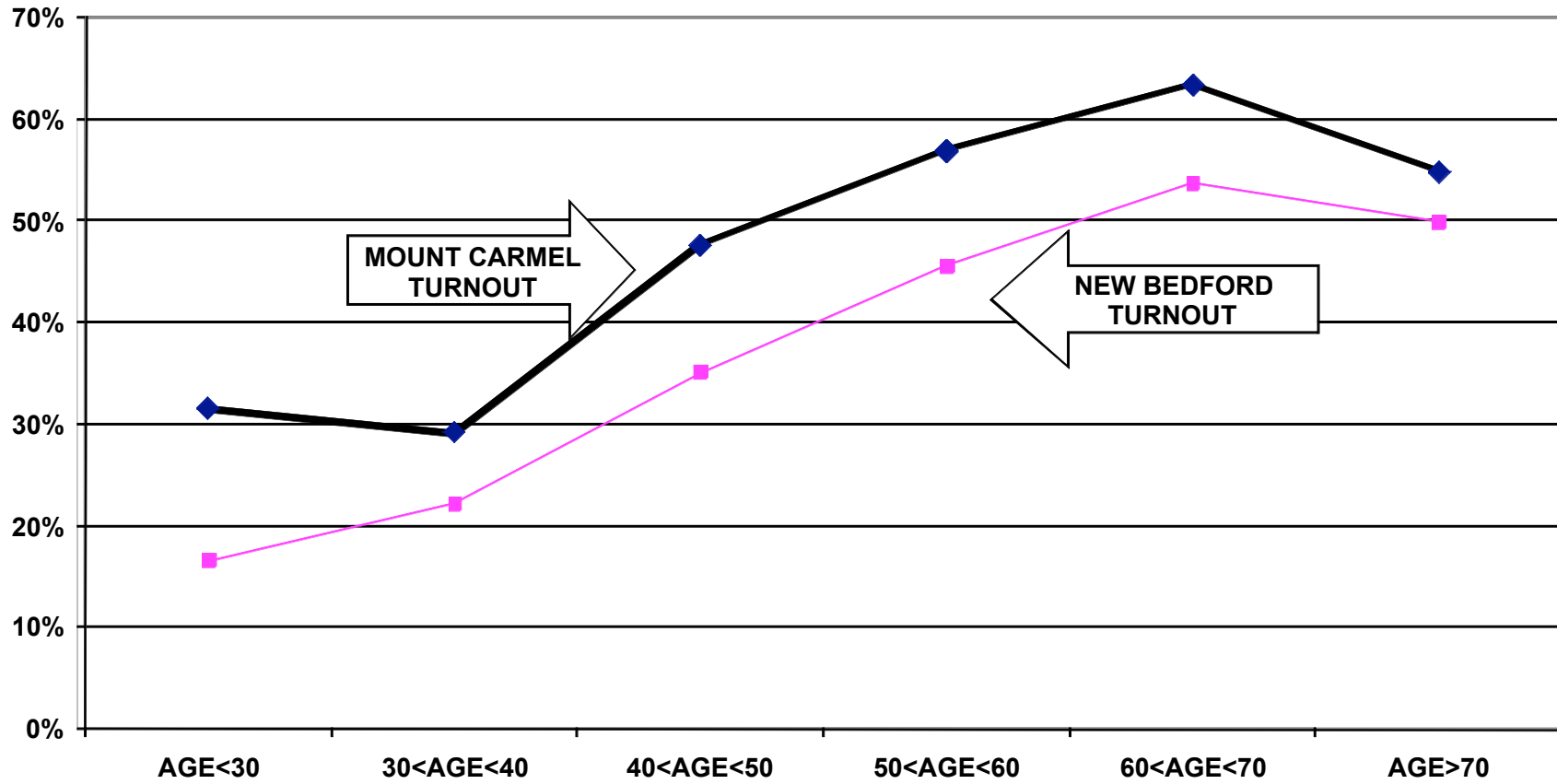
The Mount Carmel voter turnout for the February, September, and November 2008 elections was consistently higher than citywide turnout. Heads of household turnout for the February Presidential Primary Elections was 50%, as compared to the city turnout of 32%. The Mount Carmel heads of household turnout for the September State Primary Elections was 26%, as compared to the city turnout of 14%. Heads of household turnout for the November 2008 Presidential Elections was 78%, as compared to the city turnout of 61%.

Voter turnout is not uniform across age groups. Voters under 30 years of age and even those between 30 and 40 years old had lower turnout rates than the older voters. This is true for the registered voters in the parish and true for the registered voters in the community at large.

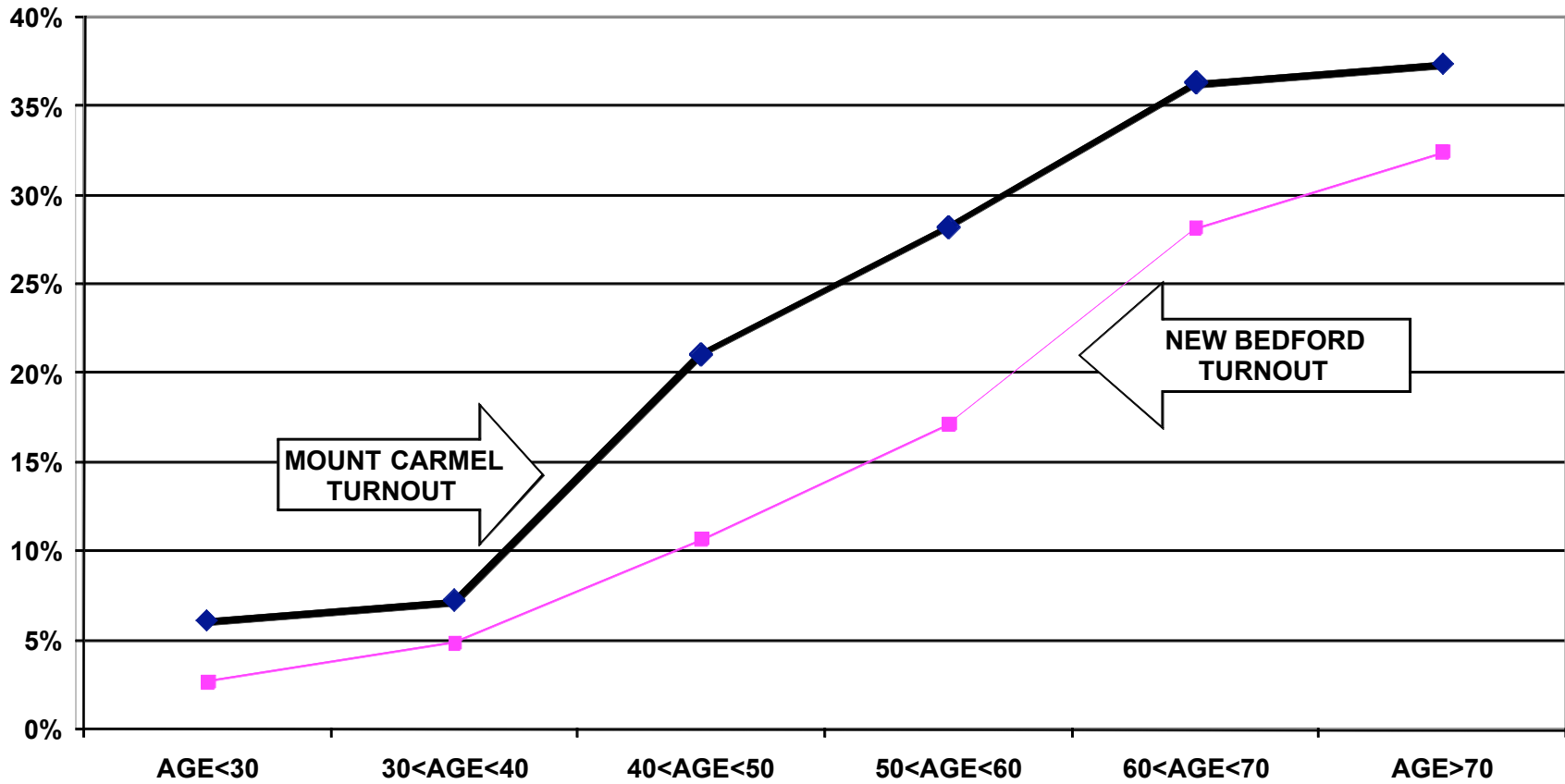
For example, voters under 30 years old associated with the parish had a 32% turnout rate in the February elections, while voters between 60 and 70 years old had a 63% turnout rate. For the September elections, the under 30 year old associated parishioners had an 6% turnout rate compared to a 36% turnout rate for voters between 60 and 70 years old. For the November Presidential elections, voters under 30 years old associated with the parish had a 60% turnout rate while voters between 60 and 70 years old had a 86% turnout rate.

The following graphs for the February, September, and November 2008 elections, illustrate the relationship between turnout rates and age. These graphs are for all voters associated with the parish, not just the heads of household.

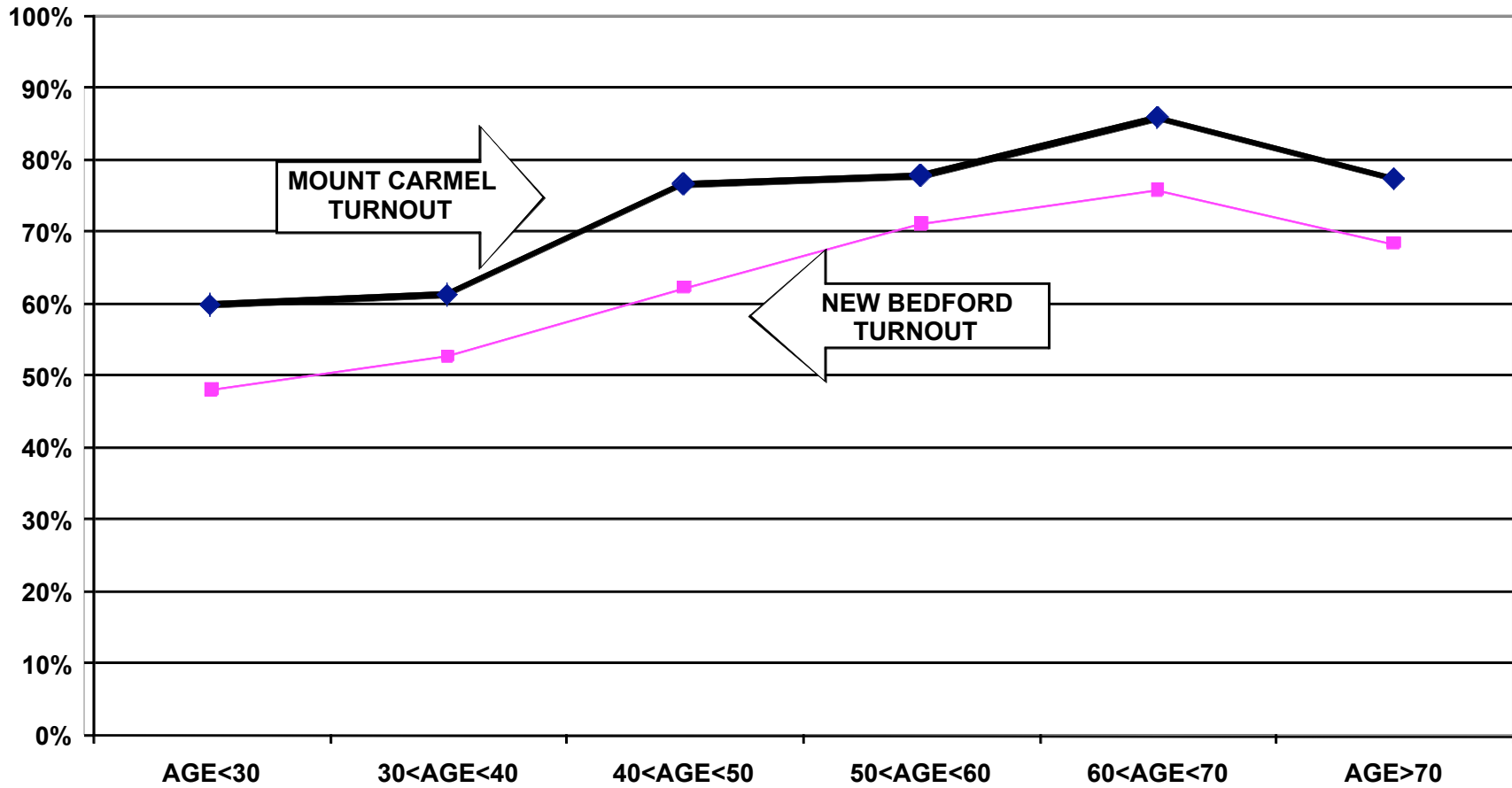
TURNOUT BY AGE FEBRUARY 2008 MOUNT CARMEL PARISH ALL HOUSEHOLD MEMBERS



TURNOUT BY AGE SEPTEMBER 2008 MOUNT CARMEL PARISH ALL HOUSEHOLD MEMBERS



TURNOUT BY AGE NOVEMBER 2008 MOUNT CARMEL PARISH ALL HOUSEHOLD MEMBERS



RECOMMENDATIONS

- The parish must determine if and how it will provide funding for the costs of participation in the Citizenship Project. The Luso American Foundation has completed 10 years of financial support for the Project but will terminate this support for 2009 and beyond. In 2009, the Project will continue to provide data processing and assist in the preparation of voter cards. With a mailing permit, the cost of printing and mailing the cards for a September Primary, and November City elections is approximately \$1,800.
- If the parish cannot provide the financial support for this mailing and/or cannot accomplish the logistics of printing and mailing the voter cards, interested members of the community should examine the accomplishments of the past ten years and determine how to build on these achievements using alternative methods of promoting civic participation.

APPENDIX

- Historical Data 10
- Registered Voter Turnout Graph 11
- Difference in Voter Turnout Graph 12
- Voter Registration by Age and Gender Graph 13
- Registered Voters vs. Actual Voters February 2008 Graph 14
- Registered Voters vs. Actual Voters September 2008 Graph 15
- Registered Voters vs. Actual Voters November 2008 Graph 16

**HISTORICAL DATA: MOUNT CARMEL PARISH
REGISTRATION - VOTING**

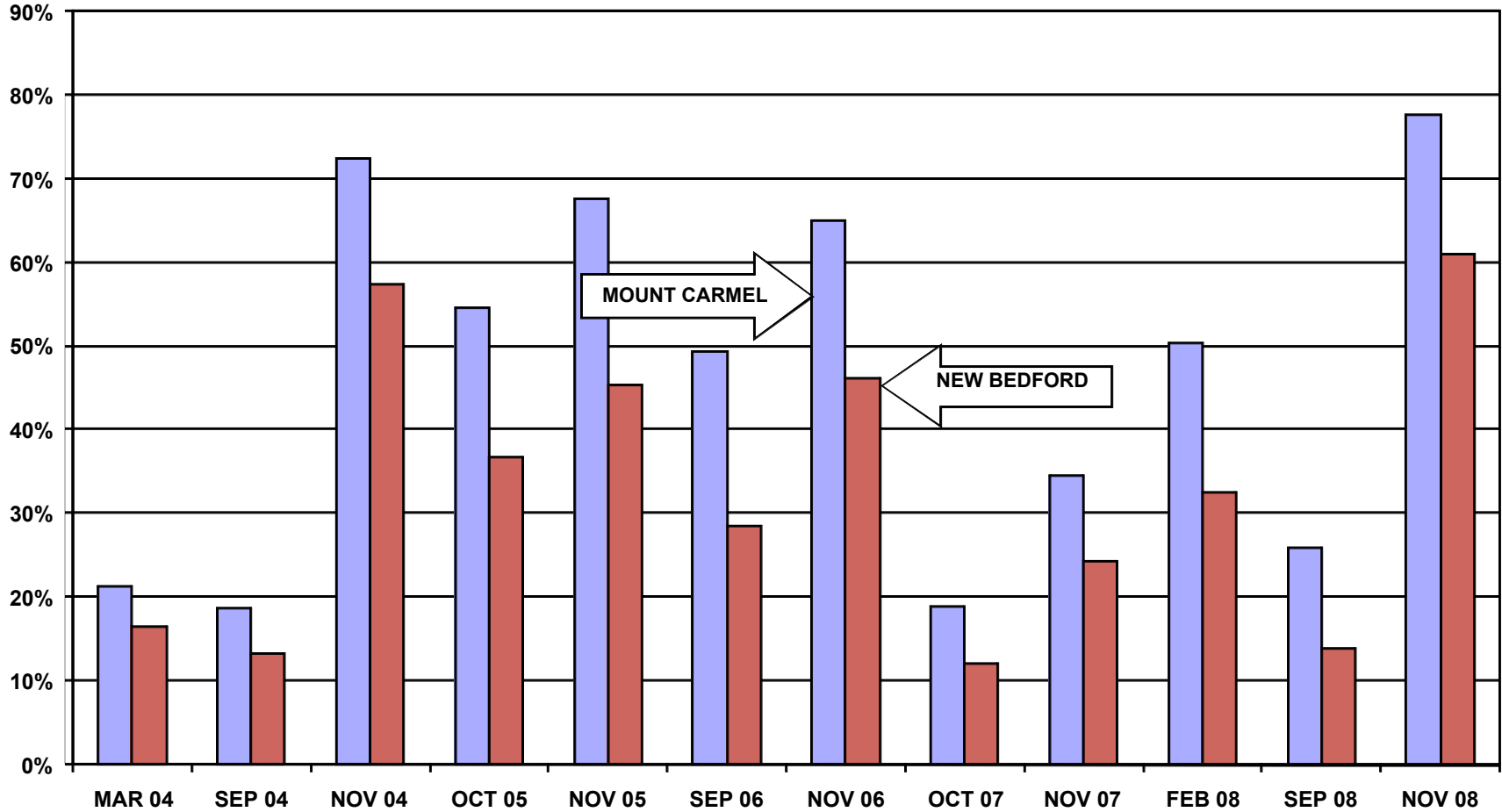
**HEADS OF HOUSEHOLD REGISTERED
TO VOTE IN NEW BEDFORD** 1,847

**ALL HOUSEHOLD MEMBERS REGISTERED
TO VOTE IN NEW BEDFORD** 2,575

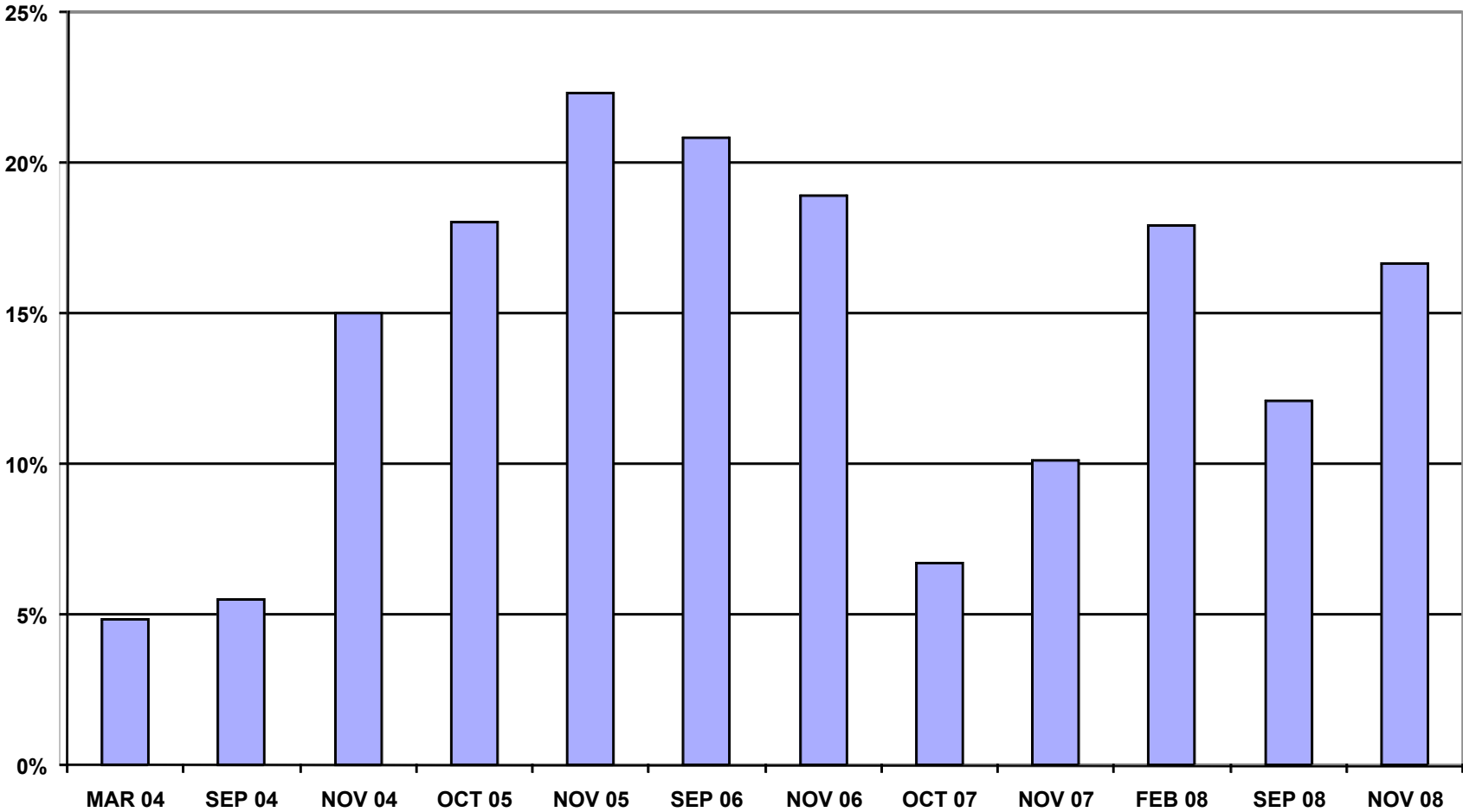
VOTING PERFORMANCE OF NEW BEDFORD RESIDENTS

	HEADS OF HOUSEHOLD WHO VOTED	AS PERCENT OF ALL REGISTERED MEMBERS ELIGIBLE TO VOTE	CITY WIDE VOTING HISTORY AS PERCENT OF ALL REGISTERED VOTERS)
		COMPARABLE STATISTICS	
VOTERS NOV 2003	861	41.7%	30.6%
VOTERS MAR 2004	437	21.1%	16.4%
VOTERS SEP 2004	385	18.6%	13.2%
VOTERS NOV 2004	1492	72.3%	57.3%
VOTERS OCT 2005	900	54.5%	36.7%
VOTERS NOV 2005	1117	67.7%	47.6%
VOTERS SEP 2006	825	49.3%	29.5%
VOTERS NOV 2006	1086	64.9%	46.0%
VOTERS OCT 2007	315	18.3%	12.1%
VOTERS NOV 2007	576	33.4%	24.3%
VOTERS FEB 2008	929	50.3%	32.4%
VOTERS SEP 2008	477	25.8%	13.7%
VOTERS NOV 2008	1434	77.6%	61.0%

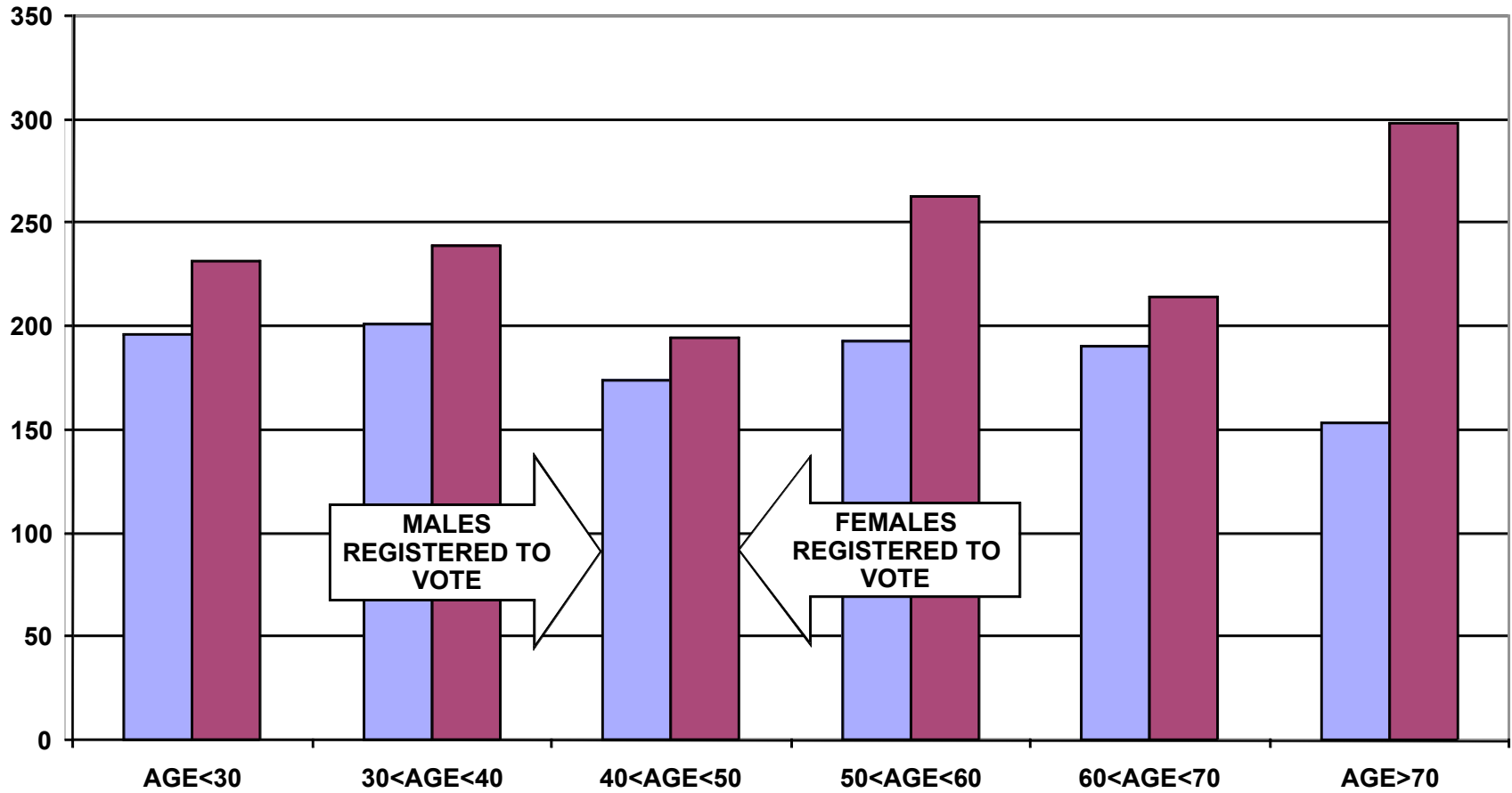
REGISTERED VOTER TURNOUT COMPARISON BETWEEN NEW BEDFORD AND MOUNT CARMEL HEADS OF HOUSEHOLD



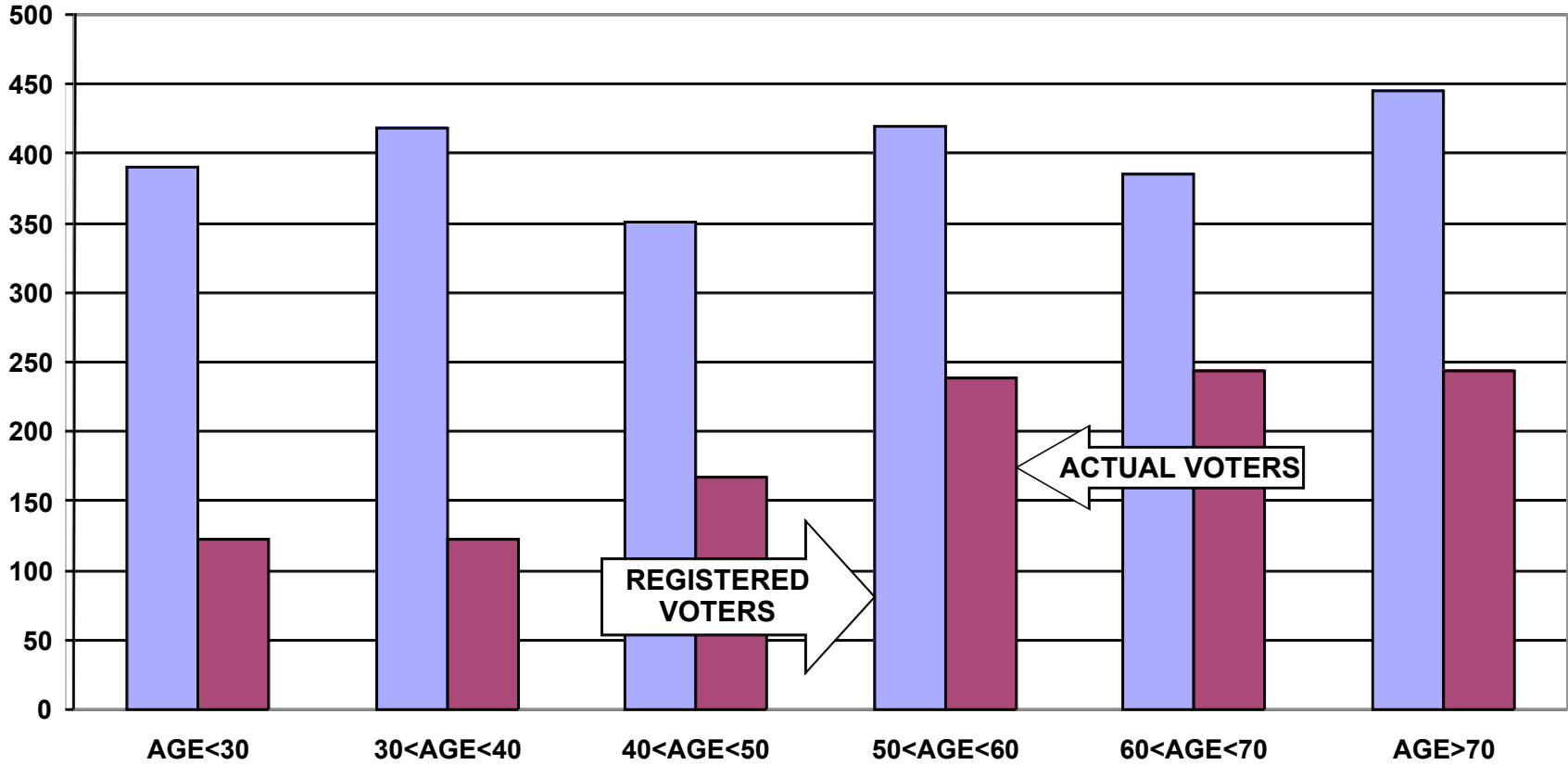
DIFFERENCE IN VOTER TURNOUT BETWEEN MOUNT CARMEL VOTERS AND NEW BEDFORD VOTERS HEADS OF HOUSEHOLD



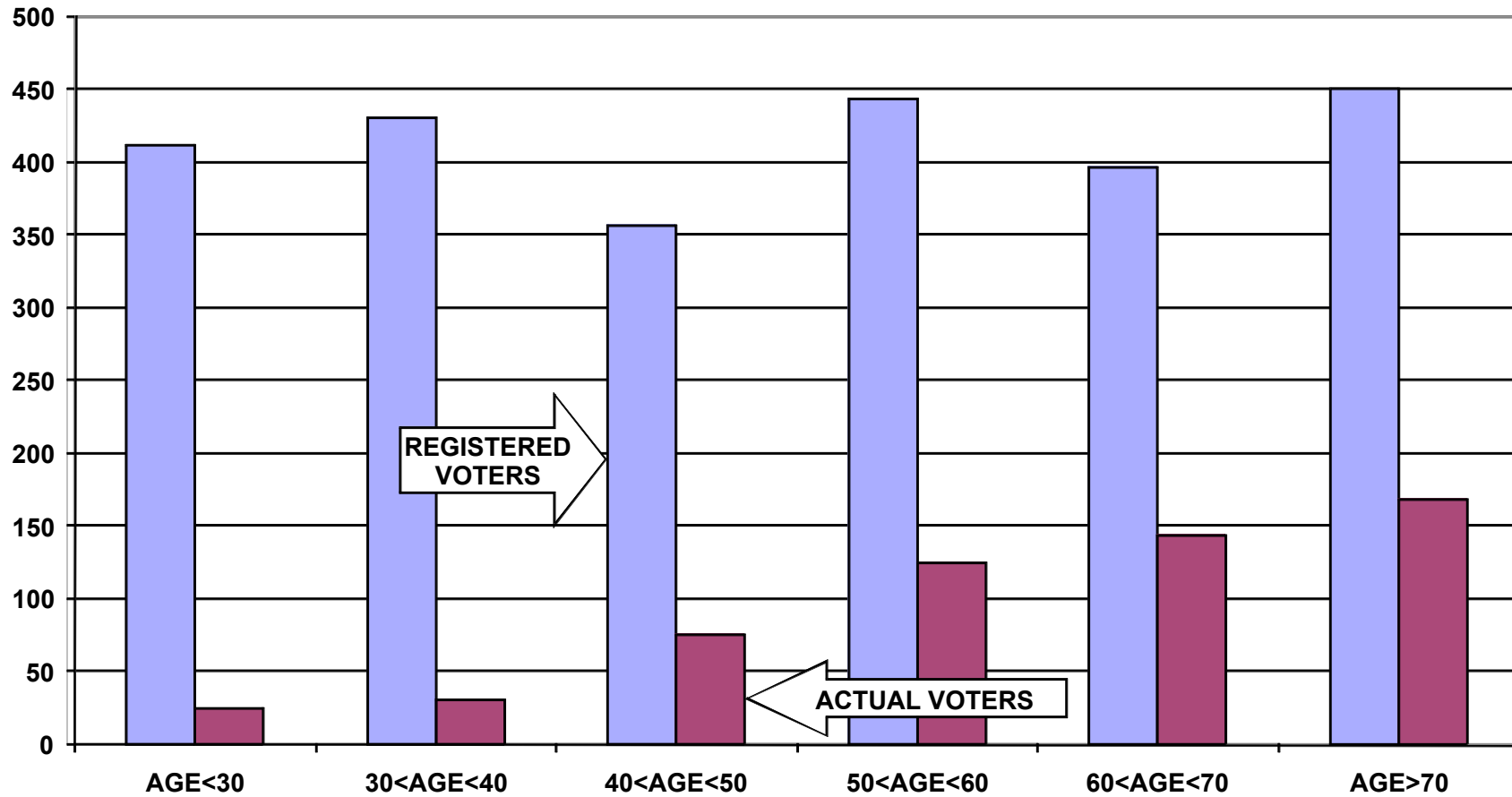
VOTER REGISTRATION BY AGE AND GENDER MOUNT CARMEL PARISH ALL HOUSEHOLD MEMBERS



**REGISTERED VOTERS VERSUS ACTUAL VOTERS FEBRUARY 2008
MOUNT CARMEL PARISH
ALL HOUSEHOLD MEMBERS**



**REGISTERED VOTERS VERSUS ACTUAL VOTERS SEPTEMBER 2008
MOUNT CARMEL PARISH
ALL HOUSEHOLD MEMBERS**



**REGISTERED VOTERS VERSUS ACTUAL VOTERS NOVEMBER 2008
MOUNT CARMEL PARISH
ALL HOUSEHOLD MEMBERS**

