

**THE PORTUGUESE AMERICAN CITIZENSHIP PROJECT**  
A NON-PARTISAN INITIATIVE TO PROMOTE CITIZENSHIP AND CIVIC INVOLVEMENT



**IMMACULATE CONCEPTION PARISH**  
**NEW BEDFORD, MA**

**EVALUATION**  
**OF**  
**THE 2008 ELECTIONS**

**June 14, 2009**

**SUPPORTED BY THE**  
**LUSO-AMERICAN**  
**FOUNDATION**

# REPORT CONTENTS

- **STATISTICS AND SUMMARY OF WORK** 3
- **RESULTS** 4
- **RECOMMENDATIONS** 8
- **APPENDIX** 9

## KEY STATISTICS

- **Number of Parishioners in Immaculate Conception: 2,183**
- **Heads of Household registered to vote in New Bedford: 960 (44% of all parishioners)**
- **Heads of Household registered to vote in Bristol County: 1,156 (53% of all parishioners)**
- **All Household Members registered to vote in New Bedford: 1,227**
- **All Household Members registered to vote in Bristol County: 1,881**
- **Heads of Household voter turnout\* in February 2008 – 50% (citywide turnout 32%)**
- **Heads of Household voter turnout in September 2008 – 27% (citywide turnout 14%)**
- **Heads of Household voter turnout in November 2008 – 76% (citywide turnout 61%)**

## SUMMARY OF WORK

Immaculate Conception has been an active participant in the Portuguese American Citizenship Project since 2002.

For the 2008 elections, postcards in Portuguese and English were sent to every registered parish voter reminding them of the date, polling hours, and location of the assigned polling station for the election. Cards were not sent out for February 2008 Presidential Primary Elections.

---

\* Voter turnout is the number of citizens voting in an election divided by the total number of citizens registered to vote. Voter turnout statistics are based on New Bedford residents only.

## RESULTS

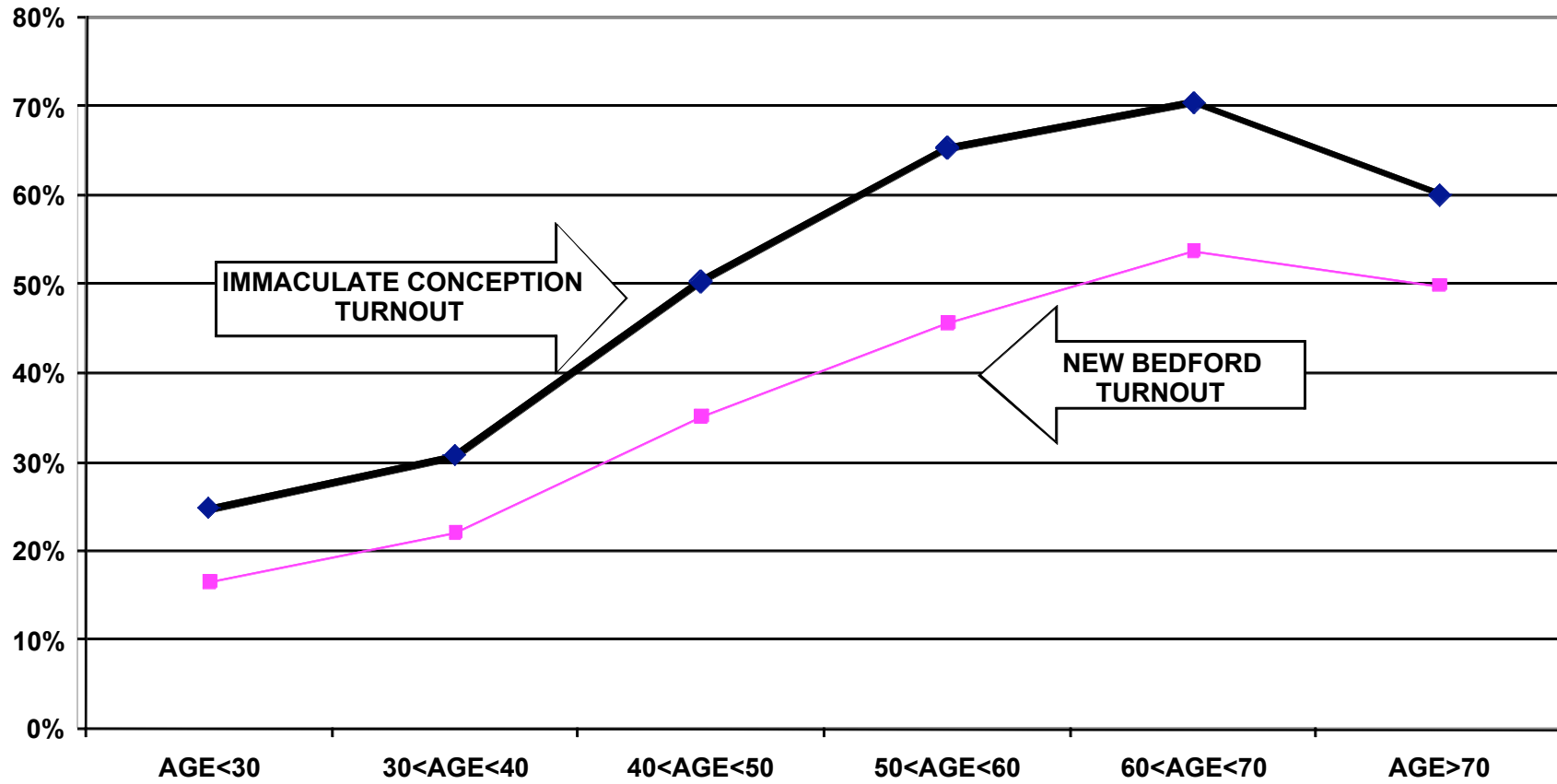
Immaculate Conception's voter turnout for the February, September, and November 2008 elections was consistently higher than citywide turnout. Heads of household turnout for the February Presidential Primary Elections was 50%, as compared to the city turnout of 32%. The Immaculate Conception heads of household turnout for the September State Primary Elections was 27%, as compared to the city turnout of 14%. Heads of household turnout for the November 2008 Presidential Elections was 76%, as compared to the city turnout of 61%.

Voter turnout is not uniform across age groups. Voters under 30 years of age and even those between 30 and 40 years old had lower turnout rates than the older voters. This is true for the registered voters in the parish and true for the registered voters in the community at large.

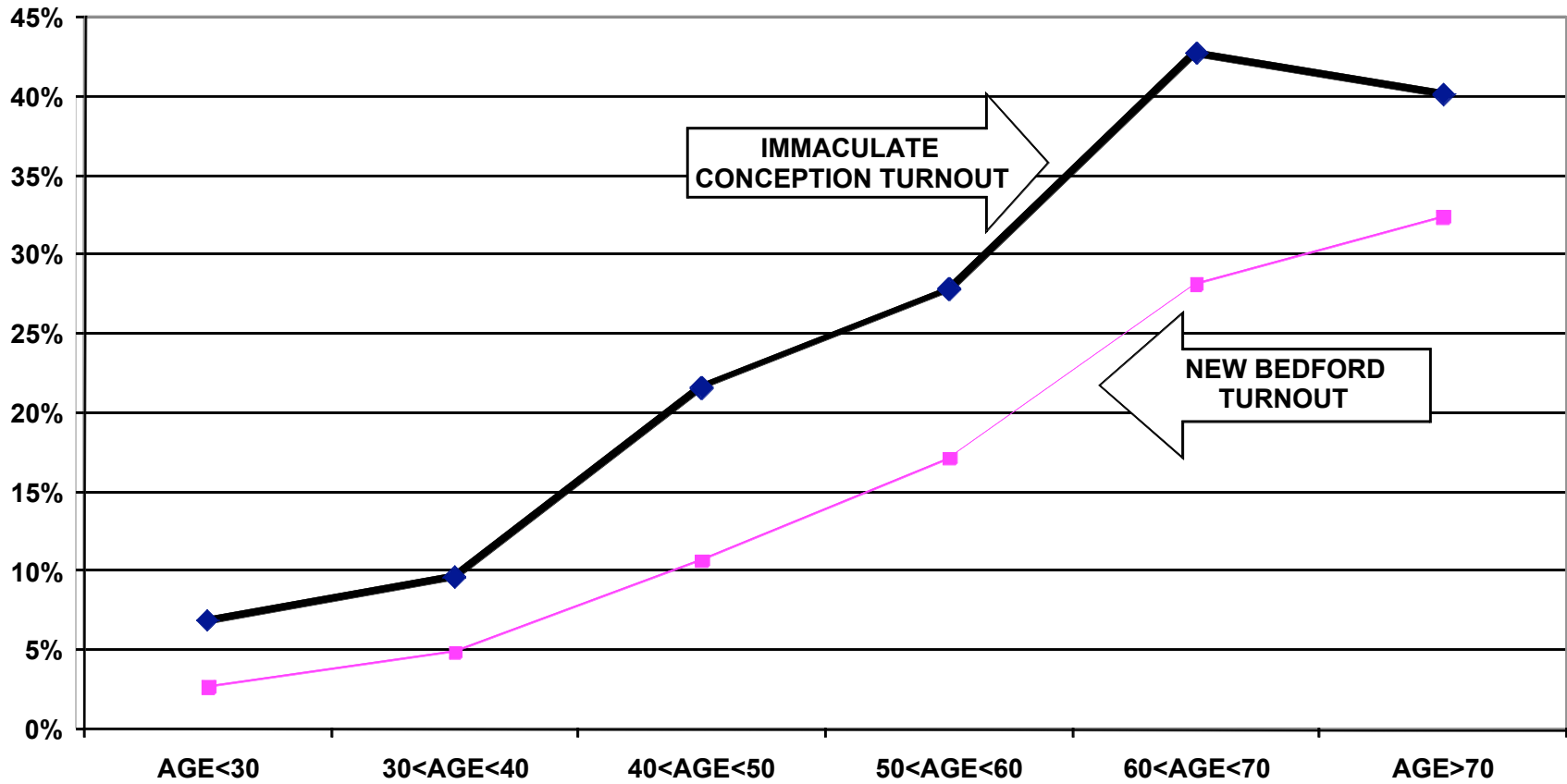
For example, voters under 30 years old associated with the parish had a 25% turnout rate in the February elections, while voters between 60 and 70 years old had a 70% turnout rate. For the September elections, the under 30 year old associated parishioners had an 7% turnout rate compared to a 43% turnout rate for voters between 60 and 70 years old. For the November Presidential elections, voters under 30 years old associated with the parish had a 63% turnout rate while voters between 60 and 70 years old had a 87% turnout rate.

The following graphs for the February, September, and November 2008 elections, illustrate the relationship between turnout rates and age. These graphs are for all voters associated with the parish, not just the heads of household.

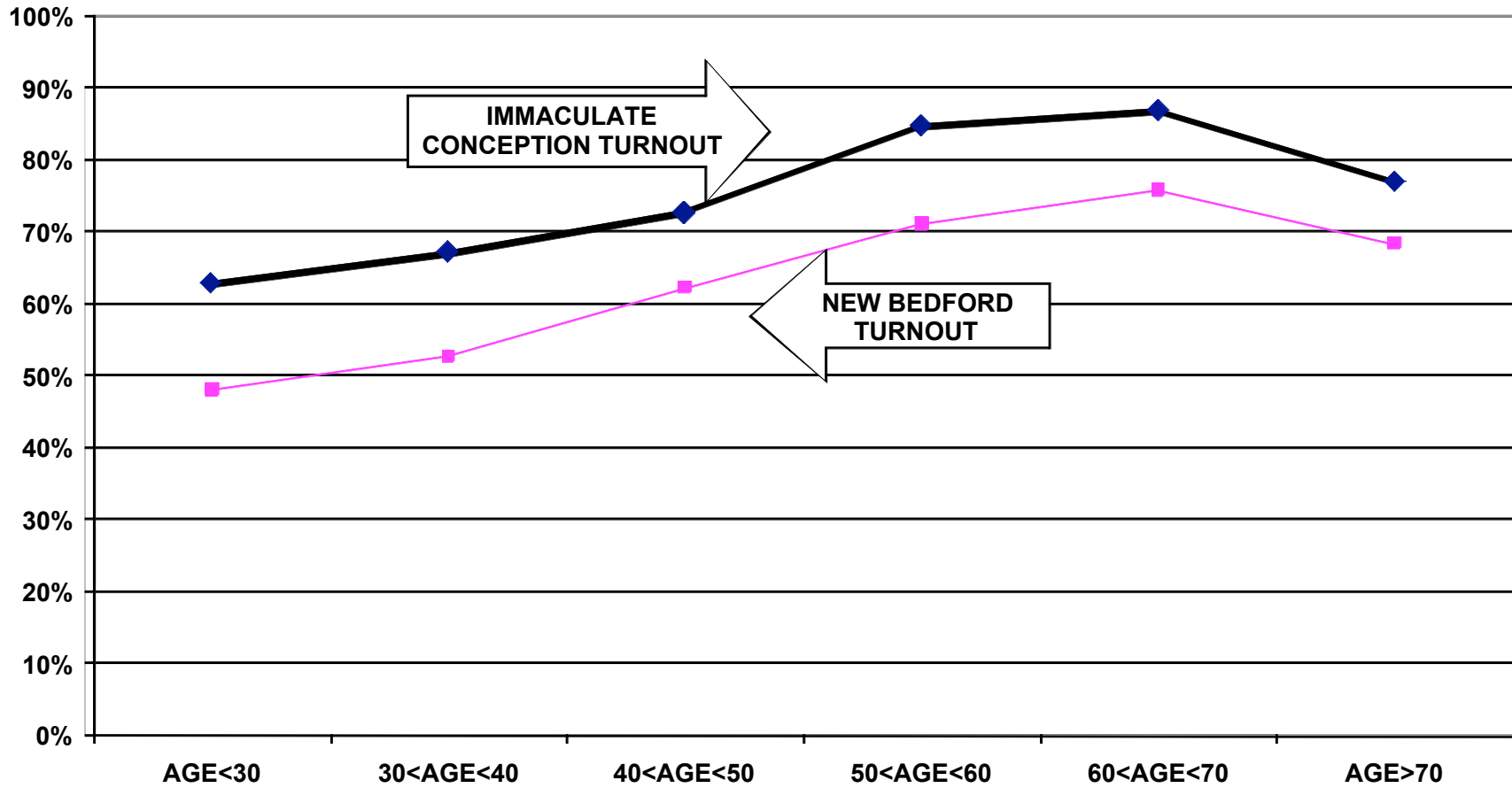
### TURNOUT BY AGE FEBRUARY 2008 IMMACULATE CONCEPTION PARISH ALL HOUSEHOLD MEMBERS



### TURNOUT BY AGE SEPTEMBER 2008 IMMACULATE CONCEPTION PARISH ALL HOUSEHOLD MEMBERS



### TURNOUT BY AGE NOVEMBER 2008 IMMACULATE CONCEPTION PARISH ALL HOUSEHOLD MEMBERS



## RECOMMENDATIONS

- The parish must determine if and how it will provide funding for the costs of participation in the Citizenship Project. The Luso American Foundation has completed 10 years of financial support for the Project but will terminate this support for 2009 and beyond. In 2009, the Project will continue to provide data processing and assist in the preparation of voter cards. With a mailing permit, the cost of printing and mailing the cards for a September Primary, and November City elections is approximately \$1,000.
- If the parish cannot provide the financial support for this mailing and/or cannot accomplish the logistics of printing and mailing the voter cards, interested members of the community should examine the accomplishments of the past ten years and determine how to build on these achievements using alternative methods of promoting civic participation.



# APPENDIX

- Historical Data 10
- Registered Voter Turnout Graph 11
- Difference in Voter Turnout Graph 12
- Voter Registration by Age and Gender Graph 13
- Registered Voters vs. Actual Voters February 2008 Graph 14
- Registered Voters vs. Actual Voters September 2008 Graph 15
- Registered Voters vs. Actual Voters November 2008 Graph 16

**HISTORICAL DATA: IMMACULATE CONCEPTION PARISH  
REGISTRATION - VOTING**

**MEMBERS REGISTERED  
TO VOTE IN CITY OF NEW BEDFORD**

**960 HEADS OF HOUSEHOLD**

**1,227 ALL FAMILY MEMBERS**

**VOTING PERFORMANCE OF NEW BEDFORD RESIDENTS**

**HEADS OF HOUSEHOLD  
WHO VOTED**

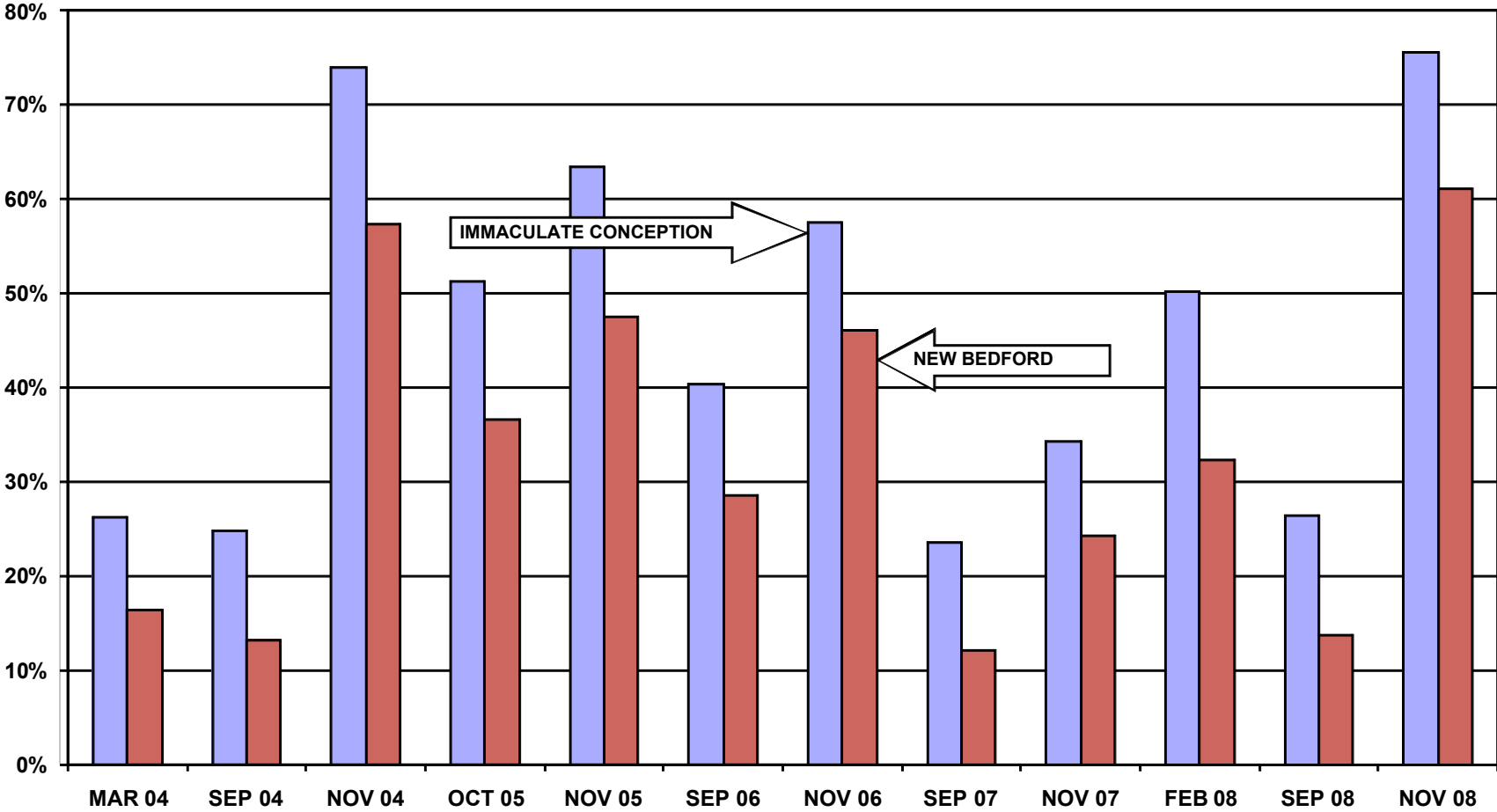
**AS PERCENT OF ALL  
REGISTERED MEMBERS  
ELIGIBLE TO VOTE**

**CITY WIDE VOTING HISTORY  
AS PERCENT OF ALL  
REGISTERED VOTERS)**

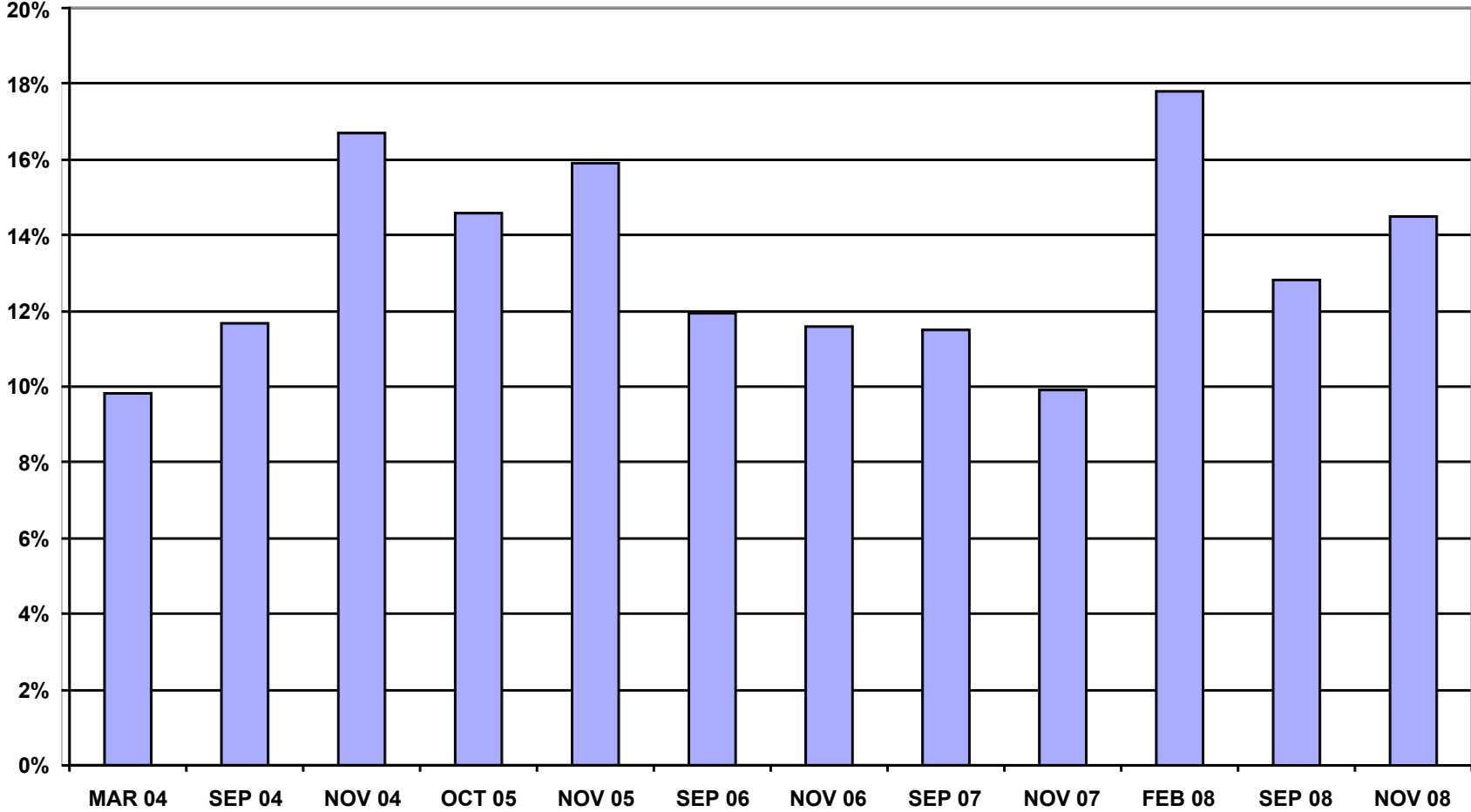
**COMPARABLE STATISTICS**

VOTERS NOV 2003	818	43.6%	30.6%
VOTERS MAR 2004	491	26.2%	16.4%
VOTERS SEP 2004	466	24.9%	13.2%
VOTERS NOV 2004	1387	73.9%	57.3%
VOTERS OCT 2005	807	51.2%	36.6%
VOTERS NOV 2005	1001	63.5%	47.6%
VOTERS SEP 2006	691	40.4%	38.5%
VOTERS NOV 2006	984	57.6%	46.0%
VOTERS OCT 2007	429	23.6%	12.1%
VOTERS NOV 2007	622	34.2%	24.3%
VOTERS FEB 2008	482	50.2%	32.4%
VOTERS SEP 2008	254	26.5%	13.7%
VOTERS NOV 2008	725	75.5%	61.0%

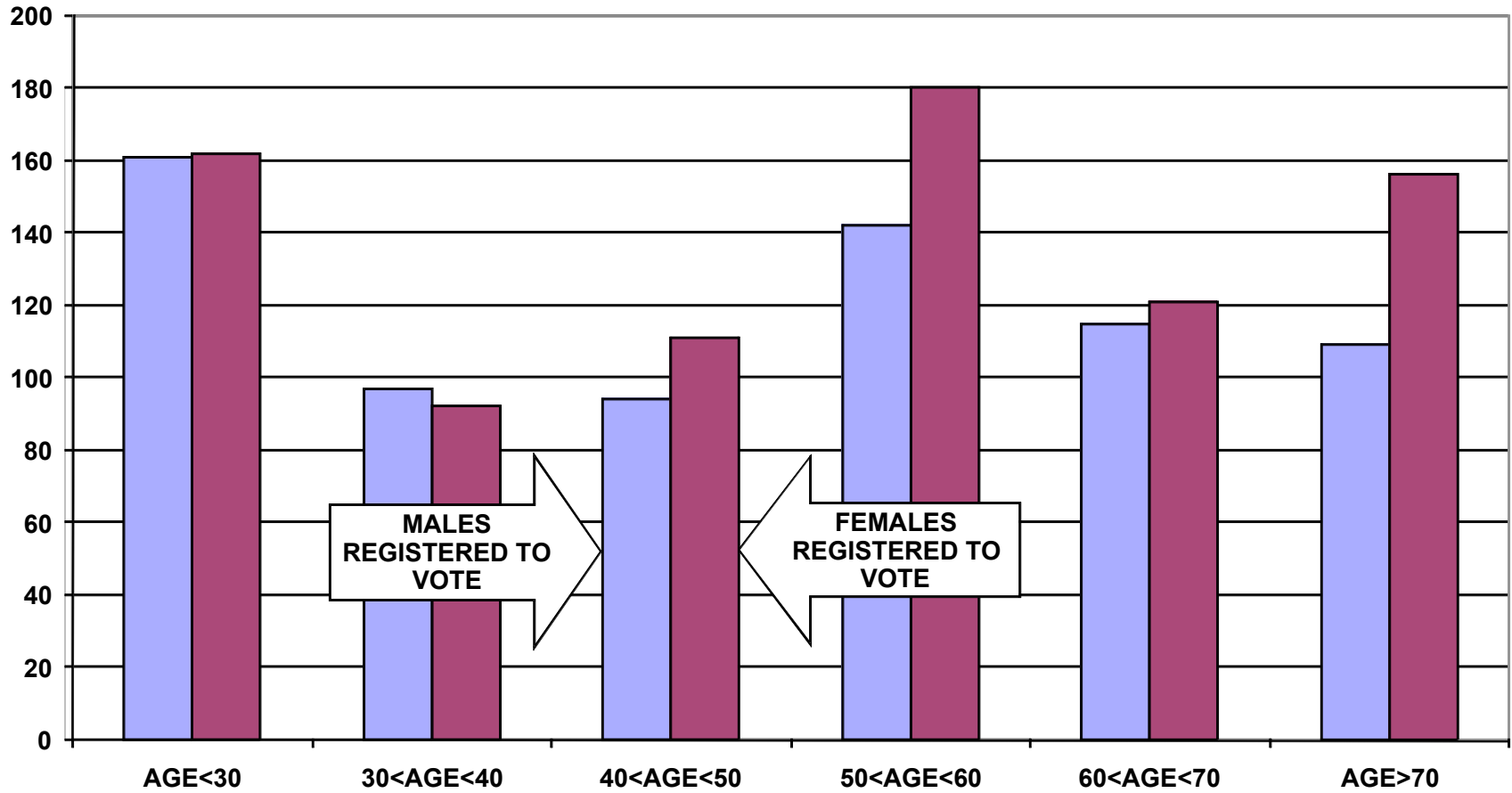
### REGISTERED VOTER TURNOUT COMPARISON BETWEEN NEW BEDFORD AND IMMACULATE CONCEPTION HEADS OF HOUSEHOLD



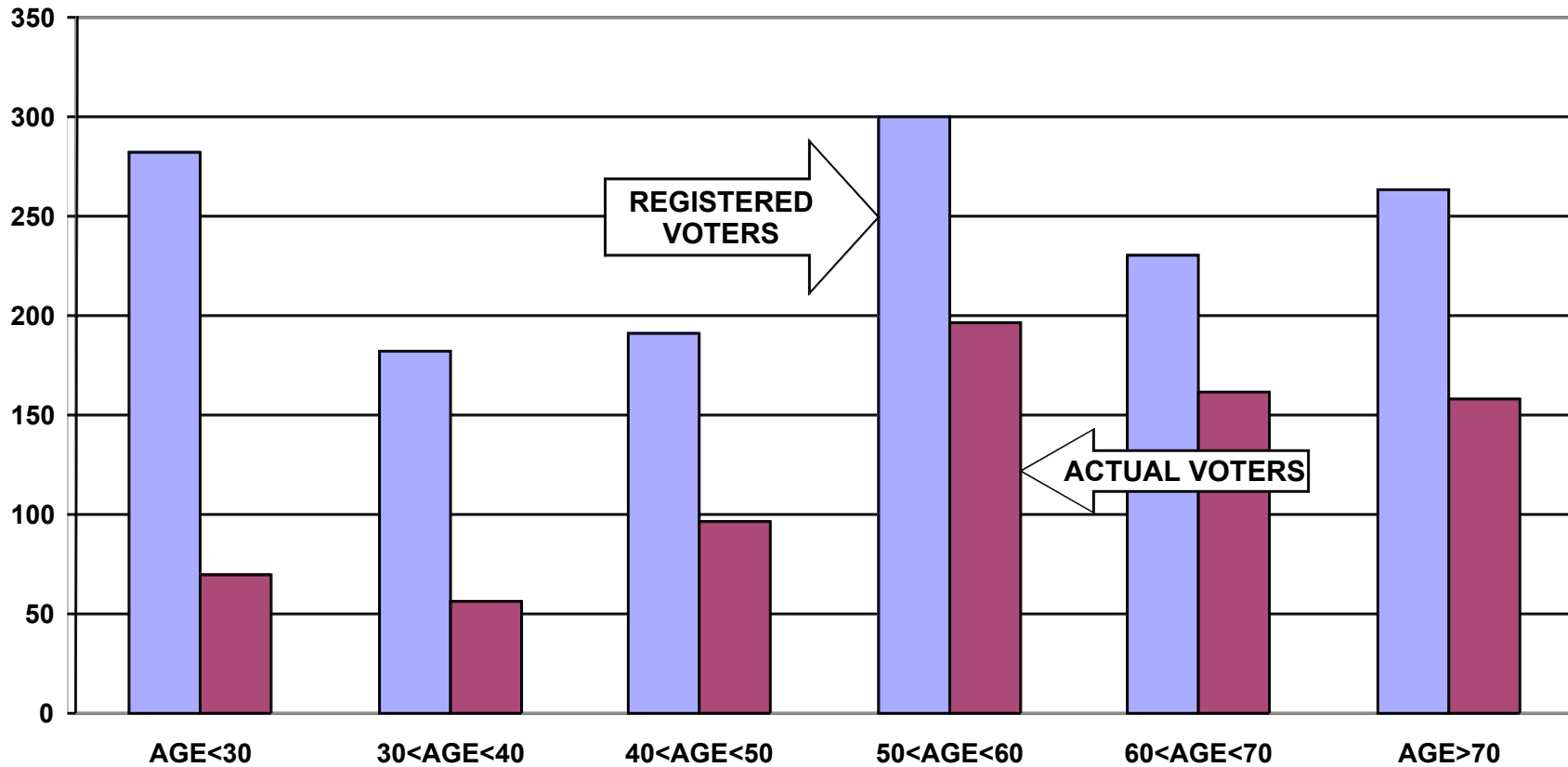
### DIFFERENCE IN VOTER TURNOUT BETWEEN IMMACULATE CONCEPTION VOTERS AND NEW BEDFORD VOTERS HEADS OF HOUSEHOLD



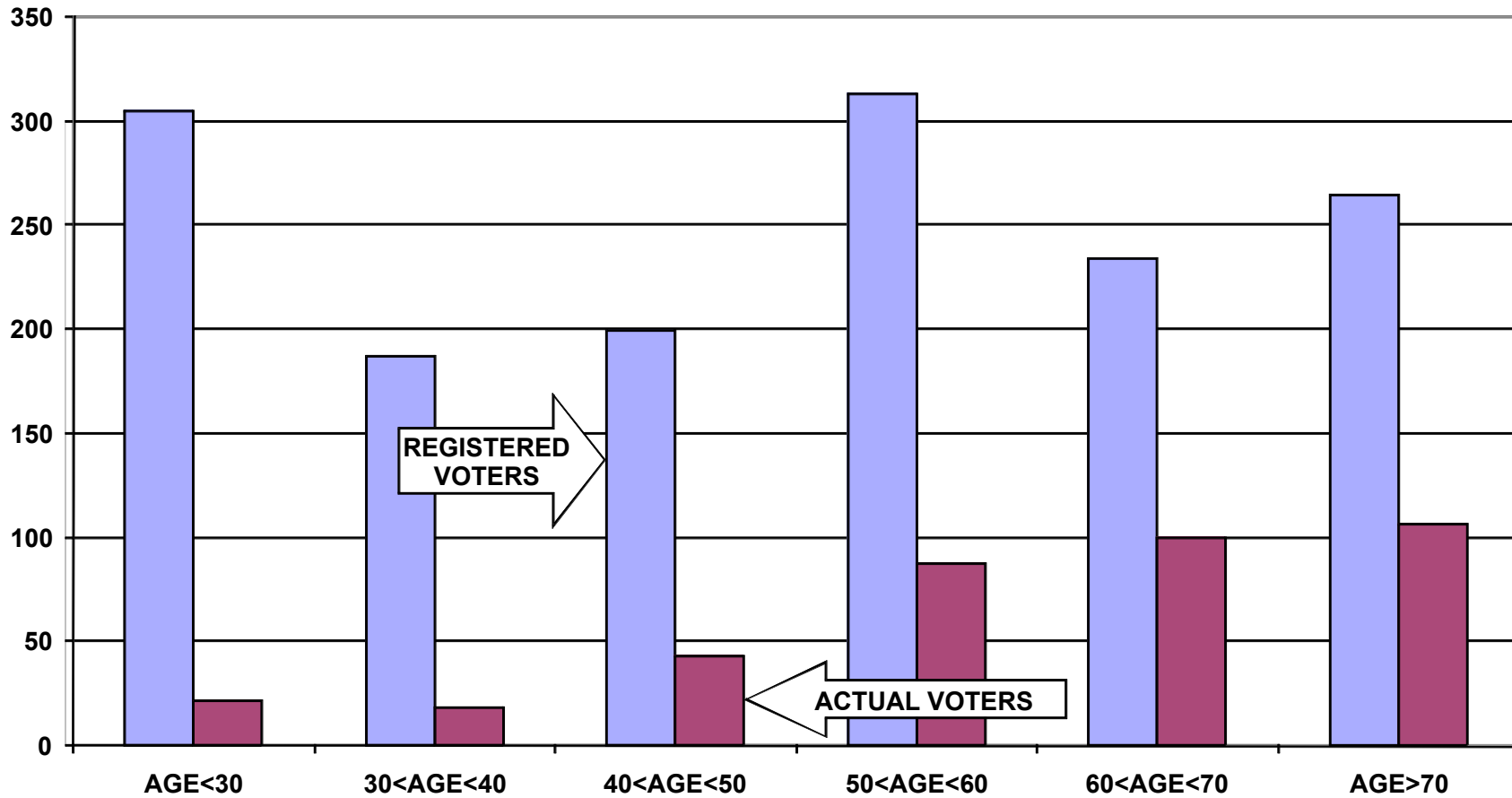
### VOTER REGISTRATION BY AGE AND GENDER IMMACULATE CONCEPTION PARISH ALL HOUSEHOLD MEMBERS



**REGISTERED VOTERS VERSUS ACTUAL VOTERS FEBRUARY 2008  
IMMACULATE CONCEPTION PARISH  
ALL HOUSEHOLD MEMBERS**



**REGISTERED VOTERS VERSUS ACTUAL VOTERS SEPTEMBER 2008  
IMMACULATE CONCEPTION PARISH  
ALL HOUSEHOLD MEMBERS**



**REGISTERED VOTERS VERSUS ACTUAL VOTERS NOVEMBER 2008  
IMMACULATE CONCEPTION PARISH  
ALL HOUSEHOLD MEMBERS**

