

THE PORTUGUESE AMERICAN CITIZENSHIP PROJECT
A NON-PARTISAN INITIATIVE TO PROMOTE CITIZENSHIP AND CIVIC INVOLVEMENT



IMMACULATE CONCEPTION PARISH
NEW BEDFORD, MA

EVALUATION
OF
THE 2010 ELECTIONS

June 1, 2011

SUPPORTED BY THE
LUSO-AMERICAN
FOUNDATION

REPORT CONTENTS

STATISTICS AND SUMMARY OF WORK	3
RESULTS	4
RECOMMENDATIONS	7
APPENDIX	8

KEY STATISTICS

- **Number of Parishioners in Immaculate Conception: 2,183**
- **Heads of Household registered to vote in New Bedford: 960 (44% of all parishioners)**
- **Heads of Household registered to vote in Bristol County: 1,156 (53% of all parishioners)**
- **All Household Members registered to vote in New Bedford: 1,227**
- **All Household Members registered to vote in Bristol County: 1,881**
- **Heads of Household voter turnout¹ in September 2010 – 15% (citywide turnout 13%)**
- **Heads of Household voter turnout in November 2010 – 50% (citywide turnout 37%)**

SUMMARY OF WORK

Immaculate Conception has been an active participant in the Portuguese American Citizenship Project since 2002.

For the 2010 elections, no postcards in either Portuguese or English were sent to every registered parish voter reminding them of the date, polling hours, and location of the assigned polling station for the election.

¹ Voter turnout is the number of citizens voting in an election divided by the total number of citizens registered to vote. Voter turnout statistics are based on New Bedford residents only.

RESULTS

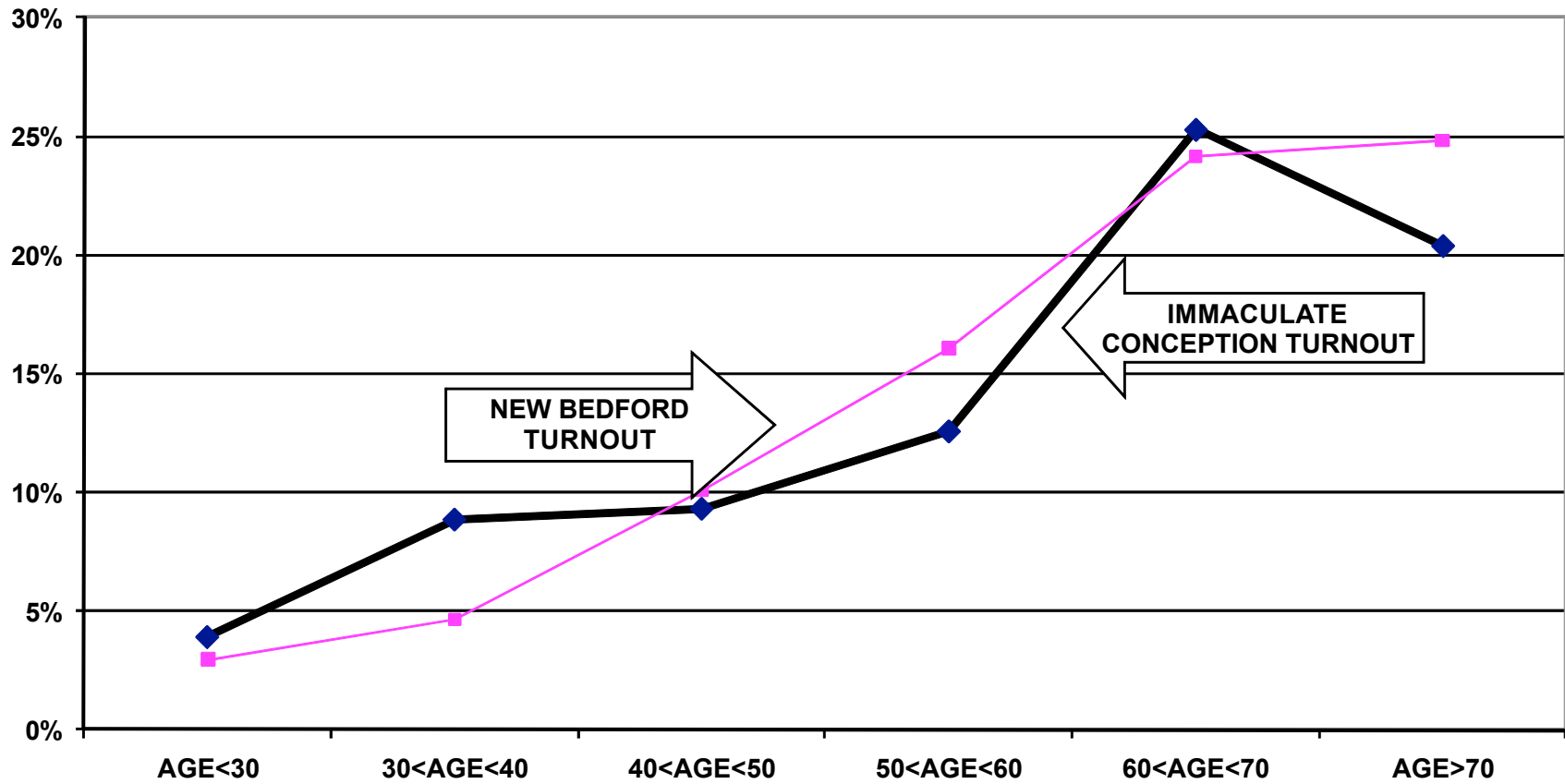
Immaculate Conception's heads of household voter turnout for the September and November 2010 elections was consistently higher than citywide turnout. The Immaculate Conception heads of household turnout for the September Primary Elections was 15%, as compared to the city turnout of 13%. Heads of household turnout for the November General Elections was 50%, as compared to the city turnout of 37%.

Voter turnout is not uniform across age groups. Voters under 30 years of age and even those between 30 and 40 years old had lower turnout rates than the older voters. This is true for the registered voters in the parish and true for the registered voters in the community at large.

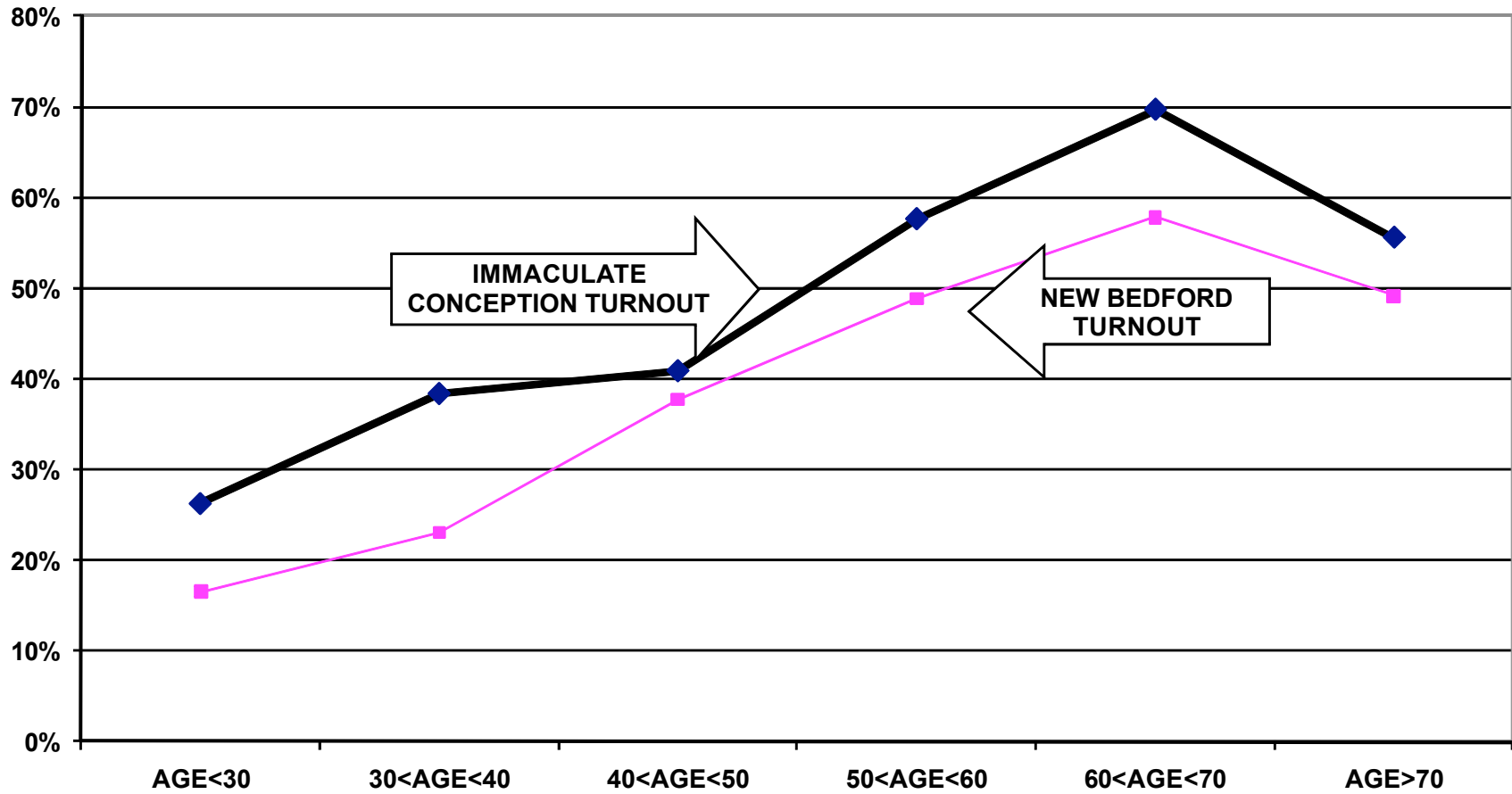
For example, for the September elections, the under 30 year old associated parishioners had an 4% turnout rate compared to a 25% turnout rate for voters between 60 and 70 years old. For the November General elections, voters under 30 years old associated with the parish had a 26% turnout rate while voters between 60 and 70 years old had a 70% turnout rate.

The following graphs for the 2010 September and November elections, illustrate the relationship between turnout rates and age. These graphs are for all voters associated with the parish, not just the heads of household.

TURNOUT BY AGE SEPTEMBER 2010 IMMACULATE CONCEPTION PARISH ALL HOUSEHOLD MEMBERS



TURNOUT BY AGE NOVEMBER 2010 IMMACULATE CONCEPTION PARISH ALL HOUSEHOLD MEMBERS



RECOMMENDATIONS

- The parish must determine if and how it will provide funding for the costs of participation in the Citizenship Project. After 10 years of full financial support for the Project, the Luso American Foundation significantly reduced its funding in 2009. In 2011, the Project will continue to provide data processing and assist in the preparation of voter cards.
- If the parish cannot provide the financial support for this mailing and/or cannot accomplish the logistics of printing and mailing the voter cards, interested members of the community should examine the accomplishments of the past ten years and determine how to build on these achievements using alternative methods of promoting civic participation.

APPENDIX

Historical Data	9
Registered Voter Turnout Graph	10
Difference in Voter Turnout Graph	11
Voter Registration by Age and Gender Graph	12
Registered Voters vs. Actual Voters September 2010 Graph	13
Registered Voters vs. Actual Voters November 2010 Graph	14

**HISTORICAL DATA: IMMACULATE CONCEPTION PARISH
REGISTRATION - VOTING**

**MEMBERS REGISTERED
TO VOTE IN CITY OF NEW BEDFORD**

960 HEADS OF HOUSEHOLD

1,227 ALL FAMILY MEMBERS

VOTING PERFORMANCE OF NEW BEDFORD RESIDENTS

**HEADS OF HOUSEHOLD
WHO VOTED**

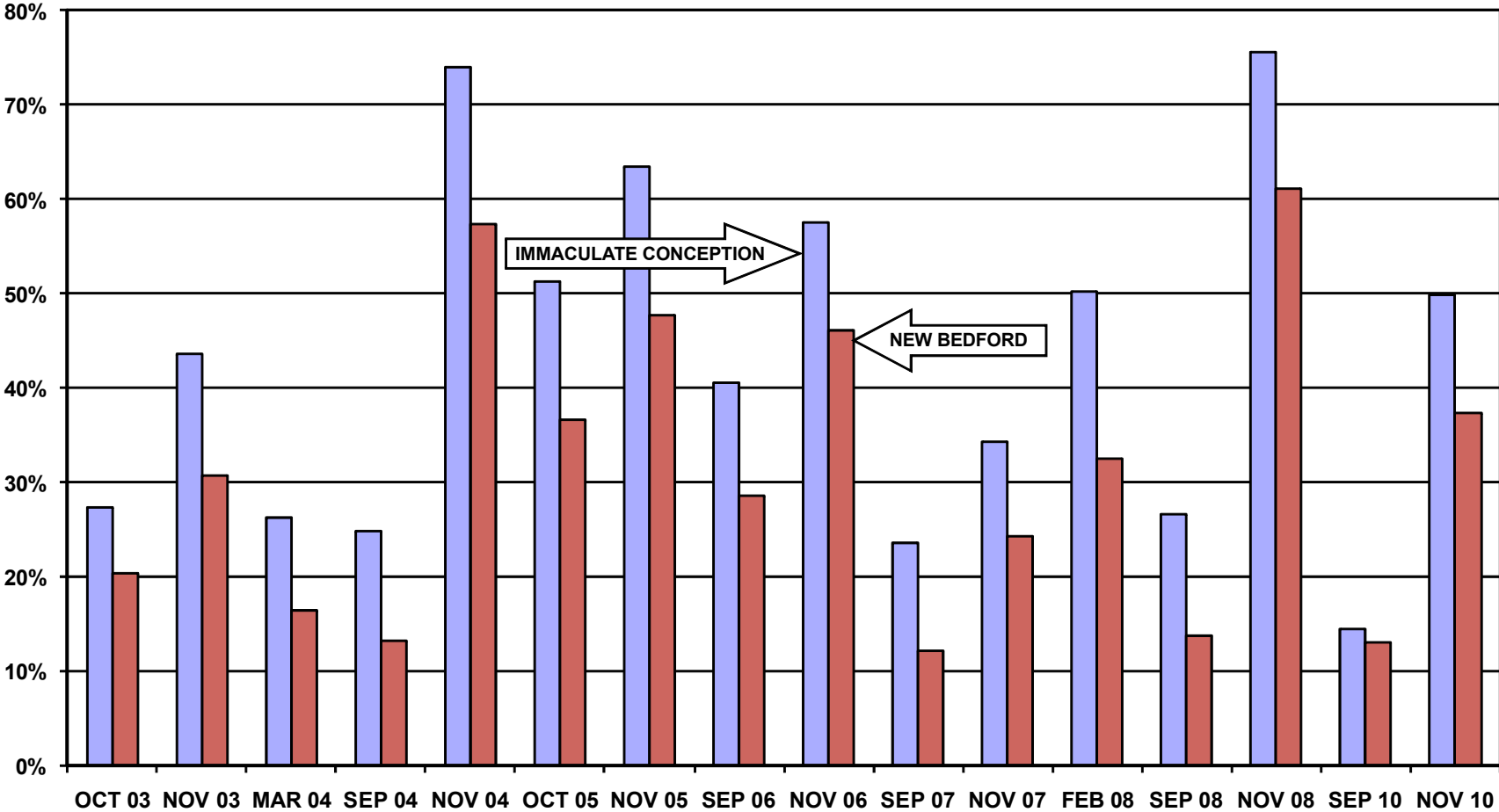
**AS PERCENT OF ALL
REGISTERED MEMBERS
ELIGIBLE TO VOTE**

**CITY WIDE VOTING HISTORY
AS PERCENT OF ALL
REGISTERED VOTERS)**

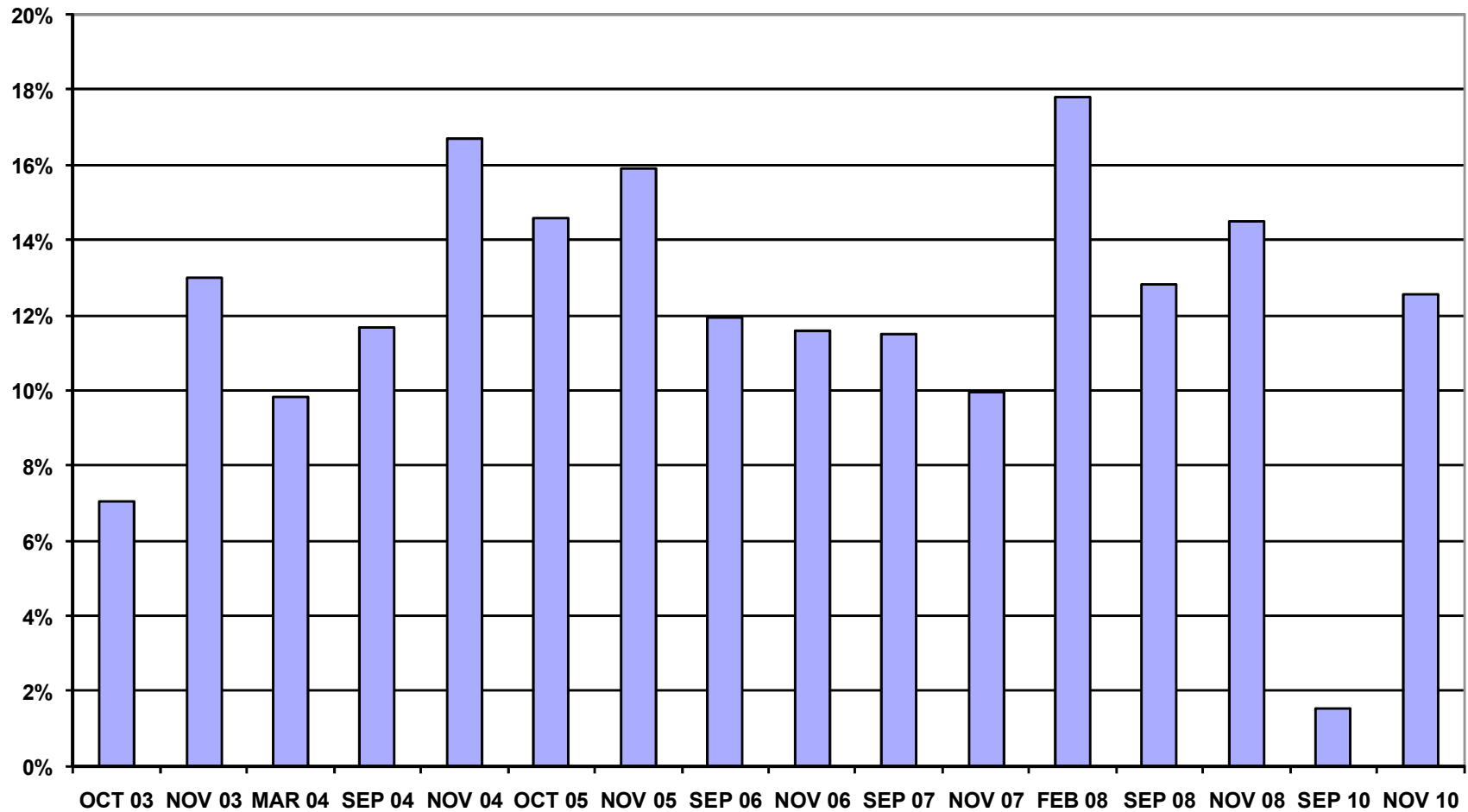
COMPARABLE STATISTICS

VOTERS NOV 2003	818	43.6%	30.6%
VOTERS MAR 2004	491	26.2%	16.4%
VOTERS SEP 2004	466	24.9%	13.2%
VOTERS NOV 2004	1387	73.9%	57.3%
VOTERS OCT 2005	807	51.2%	36.6%
VOTERS NOV 2005	1001	63.5%	47.6%
VOTERS SEP 2006	691	40.4%	38.5%
VOTERS NOV 2006	984	57.6%	46.0%
VOTERS OCT 2007	429	23.6%	12.1%
VOTERS NOV 2007	622	34.2%	24.3%
VOTERS FEB 2008	482	50.2%	32.4%
VOTERS SEP 2008	254	26.5%	13.7%
VOTERS NOV 2008	725	75.5%	61.0%
VOTERS SEP 2010	139	14.5%	13.0%
VOTERS NOV 2010	479	49.9%	37.4%

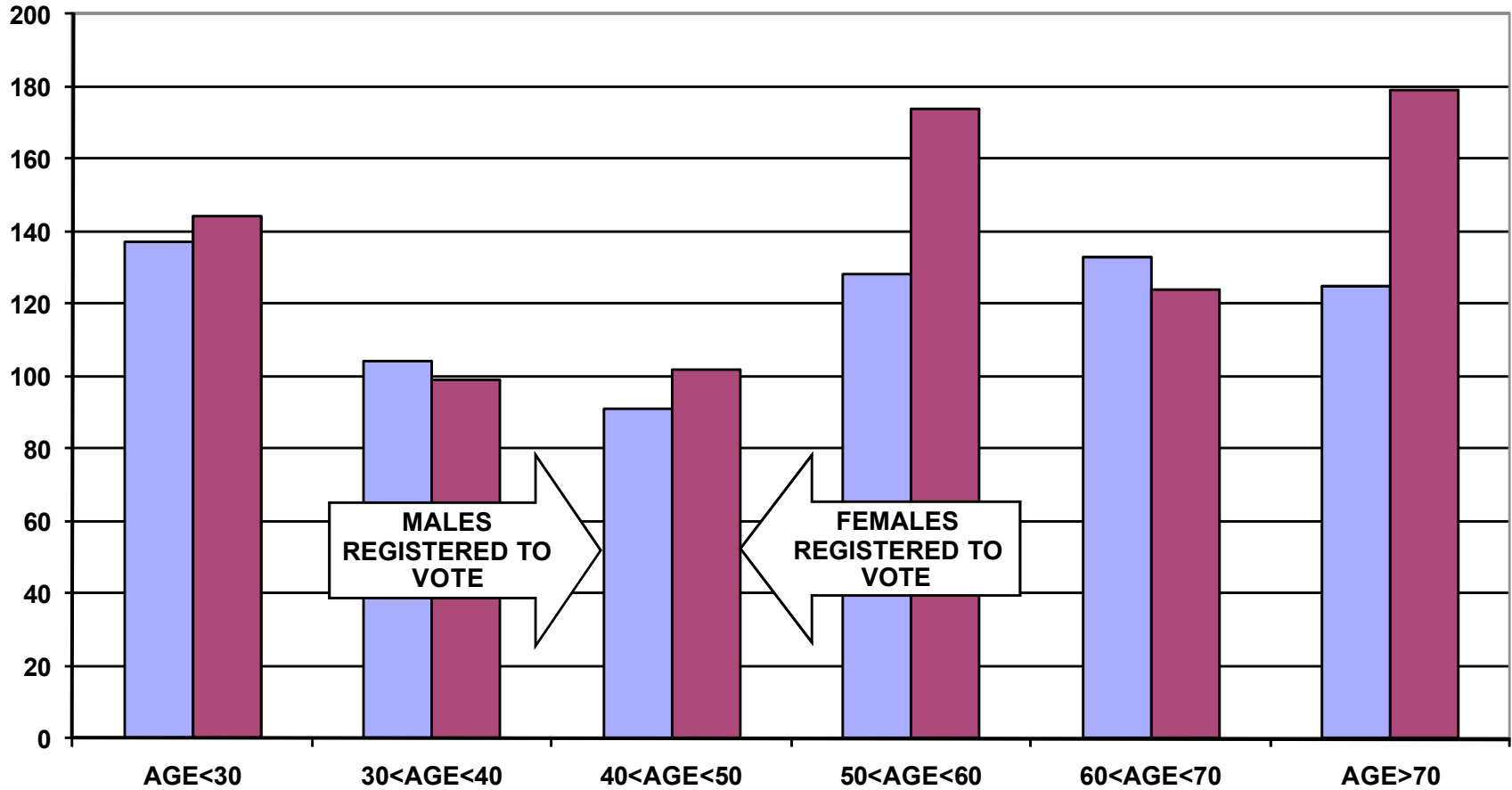
REGISTERED VOTER TURNOUT COMPARISON BETWEEN NEW BEDFORD AND IMMACULATE CONCEPTION HEADS OF HOUSEHOLD



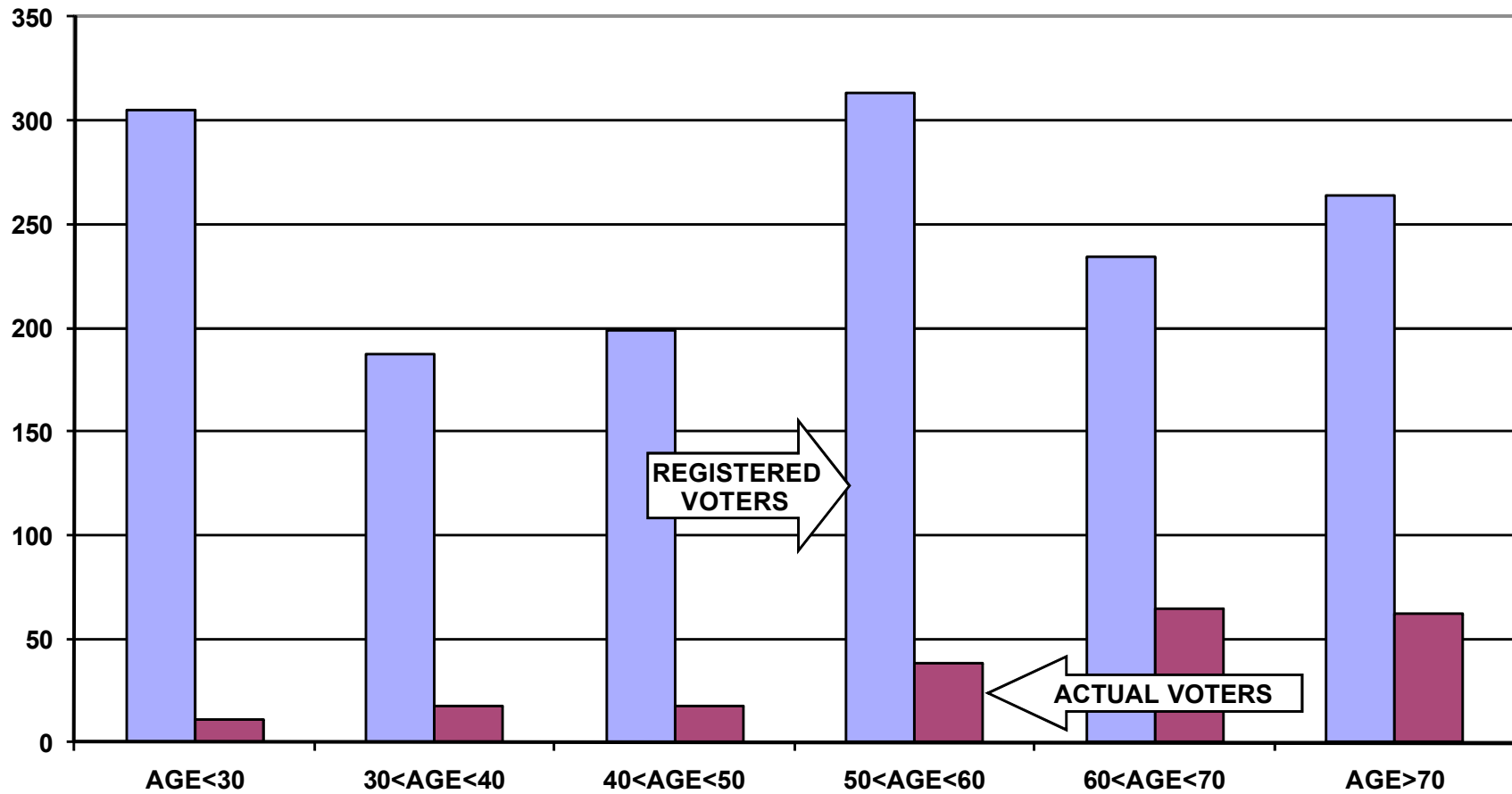
DIFFERENCE IN VOTER TURNOUT BETWEEN IMMACULATE CONCEPTION VOTERS AND NEW BEDFORD VOTERS HEADS OF HOUSEHOLD



**VOTER REGISTRATION BY AGE AND GENDER
IMMACULATE CONCEPTION PARISH
ALL HOUSEHOLD MEMBERS**



**REGISTERED VOTERS VERSUS ACTUAL VOTERS SEPTEMBER 2010
IMMACULATE CONCEPTION PARISH
ALL HOUSEHOLD MEMBERS**



**REGISTERED VOTERS VERSUS ACTUAL VOTERS NOVEMBER 2010
IMMACULATE CONCEPTION PARISH
ALL HOUSEHOLD MEMBERS**

