

THE PORTUGUESE AMERICAN CITIZENSHIP PROJECT
A NON-PARTISAN INITIATIVE TO PROMOTE CITIZENSHIP AND CIVIC INVOLVEMENT



ST. MICHAEL'S PARISH
FALL RIVER, MA

EVALUATION
OF
THE 2010 ELECTIONS

April 28, 2011

SUPPORTED BY THE
LUSO-AMERICAN
FOUNDATION

REPORT CONTENTS

STATISTICS AND SUMMARY OF WORK	3
RESULTS	4
RECOMMENDATIONS	7
APPENDIX	8

KEY STATISTICS

- **Number of Parishioners: 1,616**
- **Heads of Household registered to vote: 637 (39% of all parishioners)**
- **All Household Members registered to vote: 950**
- **Voter Turnout in September 2010 – 35% (citywide turnout 23%)**
- **Voter Turnout in November 2010 – 55% (citywide turnout 41%)**

SUMMARY OF WORK

St. Michael's Parish has been an active participant in the Portuguese American Citizenship Project since 2002.

For the 2010 elections, postcards in Portuguese and English were not sent to every registered parish voter reminding them of the date, polling hours, and location of the assigned polling station for each election. This analysis therefore represents voter turnout without the influence of the voter cards.

RESULTS

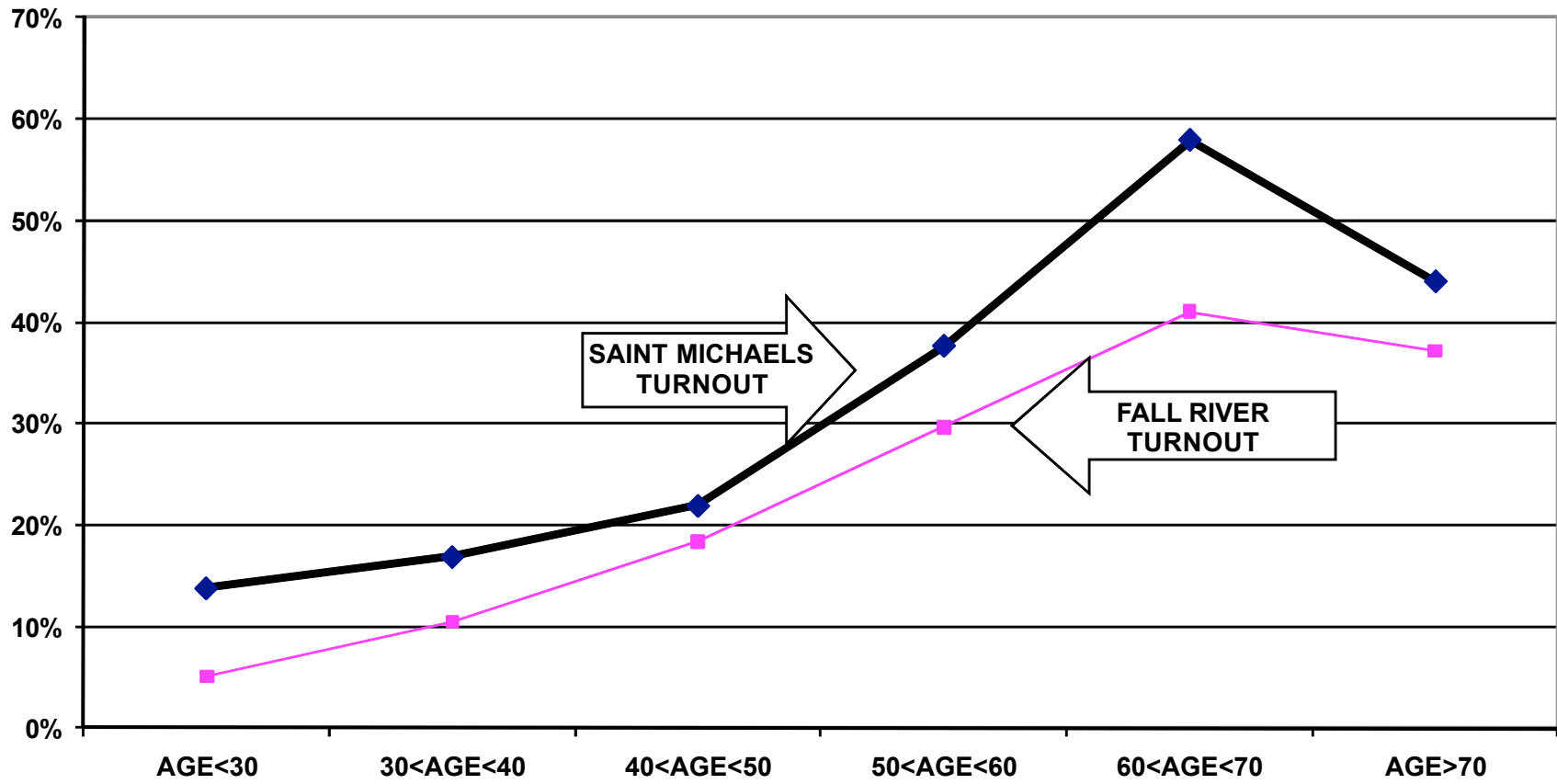
St. Michael's voter turnout for the September and November 2010 elections was consistently higher than citywide turnout. Heads of household turnout for the September Primary Elections was 35%, as compared to the city turnout of 23%. Heads of household turnout for the November 2010 Elections was 55%, as compared to the city turnout of 41%.

Voter turnout is not uniform across age groups. Voters under 30 years of age and even those between 30 and 40 years old had lower turnout rates than the older voters. This is true for the registered voters in the parish and true for the registered voters in the community at large.

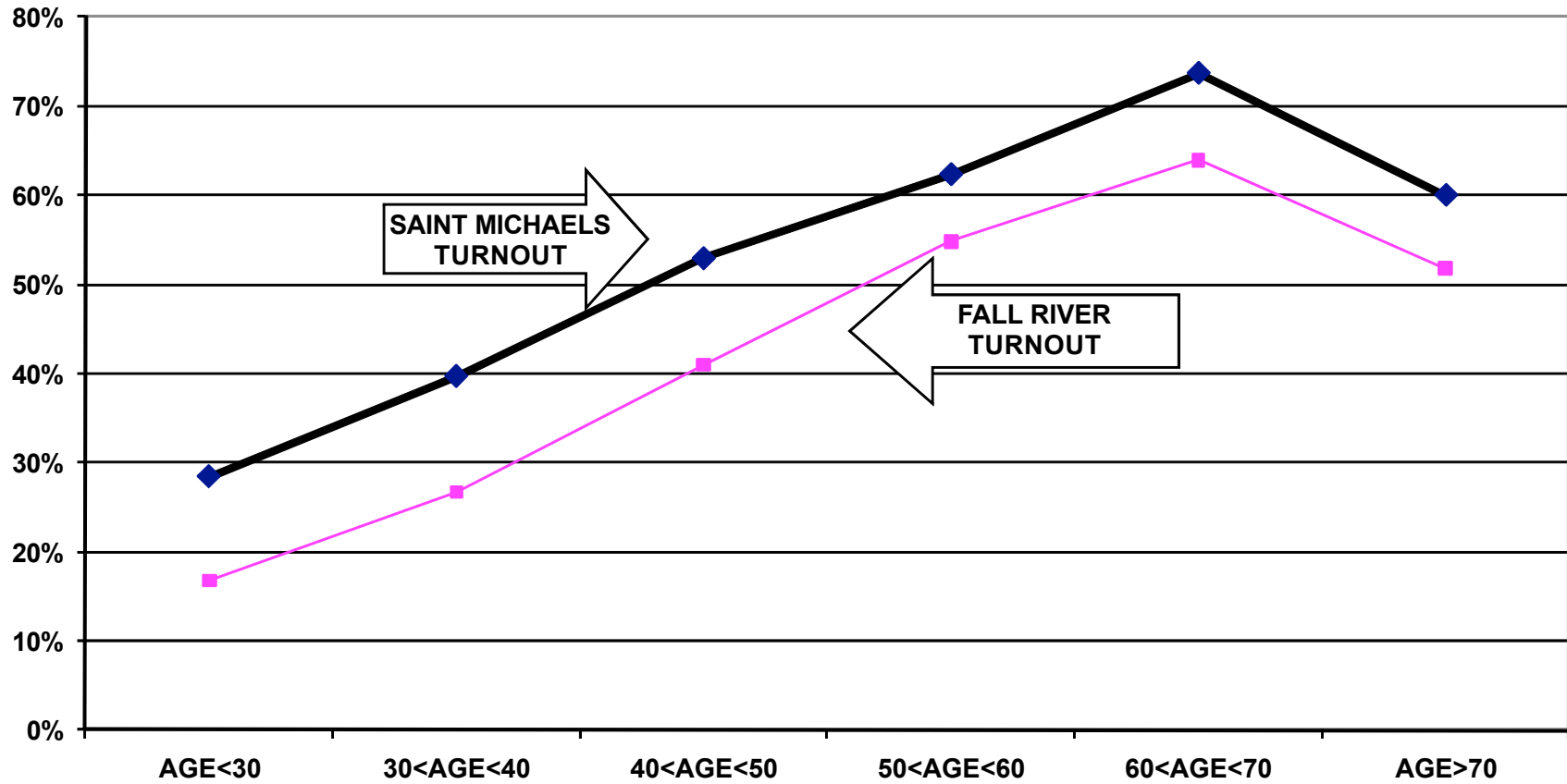
For example, voters associated with the parish under 30 years old had a 14% turnout rate in the September elections compared to a 58% turnout rate for voters between 60 and 70 years old. For the November elections, voters under 30 years old associated with the parish had a 28% turnout rate while voters between 60 and 70 years old had a 74% turnout rate.

The following graphs for the September and November 2010 elections illustrate the relationship between turnout rates and age. These graphs refer to all family members associated with the parish, not just heads of household.

TURNOUT BY AGE SEPTEMBER 2010 SAINT MICHAELS ALL HOUSEHOLD MEMBERS



TURNOUT BY AGE NOVEMBER 2010 SAINT MICHAELS ALL HOUSEHOLD MEMBERS



RECOMMENDATIONS

- The parish should try to replicate the high turnout rates of those over 60 years old among younger age groups. Voters over 60 years old had an average turnout rate of over 60% in all elections, while those under 40 years old had a turnout rate at least 20% lower in each election. The parish should discover what strategies lead to such high turnout in older voters and apply them to the parish community in general.
- The parish should examine measures to increase general civic participation in the under 30 years old and 30 to 40 year old categories. Activities such as meet-and-greets with elected officials and highlighting policies that affect these younger voters could be helpful.
- In order to encourage increased voter registrations and establish a collective commitment to strong voter turnout, St. Michael's Parish should consider sending letters to every group family reminding them of the group's almost decade-long involvement in the Citizenship Project and encouraging voter registration for family members who are citizens but have not yet registered to vote.

APPENDIX

Historical Data	9
Registered Voter Turnout Bar Graph	10
Difference in Voter Turnout Bar Graph	11
Voter Registration by Age and Gender Bar Graph	12
Registered Voters vs. Actual Voters September 2010 Bar Graph	13
Registered Voters vs. Actual Voters November 2010 Bar Graph	14

**HISTORICAL DATA: SAINT MICHAEL'S PARISH
REGISTRATION - VOTING**

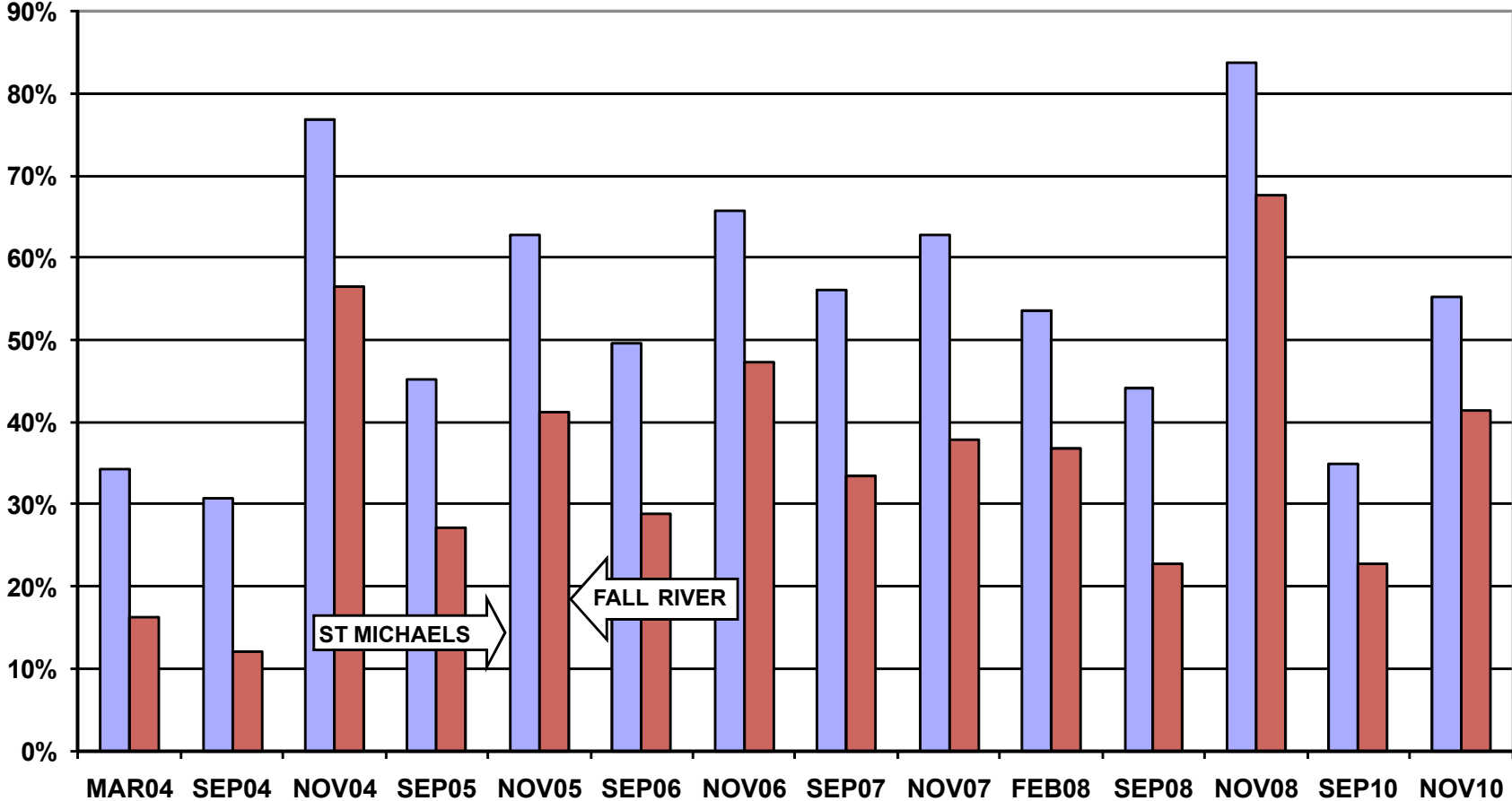
MEMBERS RESIDING IN FALL RIVER	1,616	
MEMBERS REGISTERED TO VOTE IN CITY OF FALL RIVER	637	HEADS OF HOUSEHOLD
	950	ALL FAMILY MEMBERS

VOTING PERFORMANCE OF FALL RIVER RESIDENTS

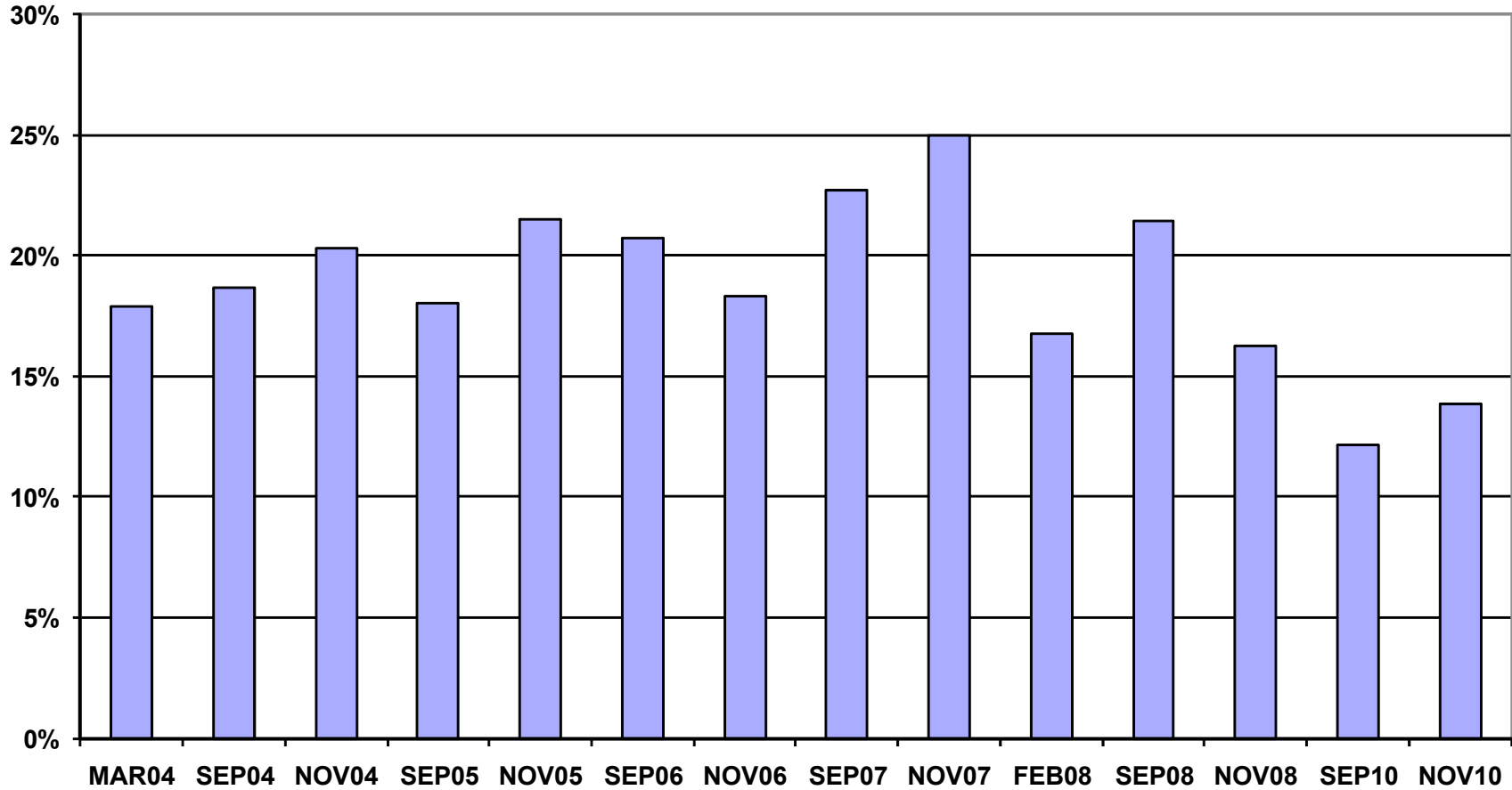
	HEADS OF HOUSEHOLD	AS PERCENT OF ALL REGISTERED MEMBERS ELIGIBLE TO VOTE	CITYWIDE VOTING HISTORY AS PERCENT OF ALL REGISTERED VOTERS)
		COMPARABLE STATISTICS	
VOTERS MAR 2004	250	34.2%	16.3%
VOTERS SEP 2004	225	30.8%	12.2%
VOTERS NOV 2004	560	76.7%	56.4%
VOTERS SEP 2005	342	45.2%	27.2%
VOTERS NOV 2005	474	62.7%	41.2%
VOTERS SEP 2006	339	49.6%	28.8%
VOTERS NOV 2006	449	65.6%	47.3%
VOTERS SEP 2007	384	56.1%	33.4%
VOTERS NOV 2007	430	62.9%	37.9%
VOTERS FEB 2008	341	53.5%	36.8%
VOTERS SEP 2008	281	44.1%	22.7%
VOTERS NOV 2008	534	83.8%	67.5%

VOTERS SEP 2010	223	35.0%	22.9%
VOTERS NOV 2010	352	55.3%	41.4%

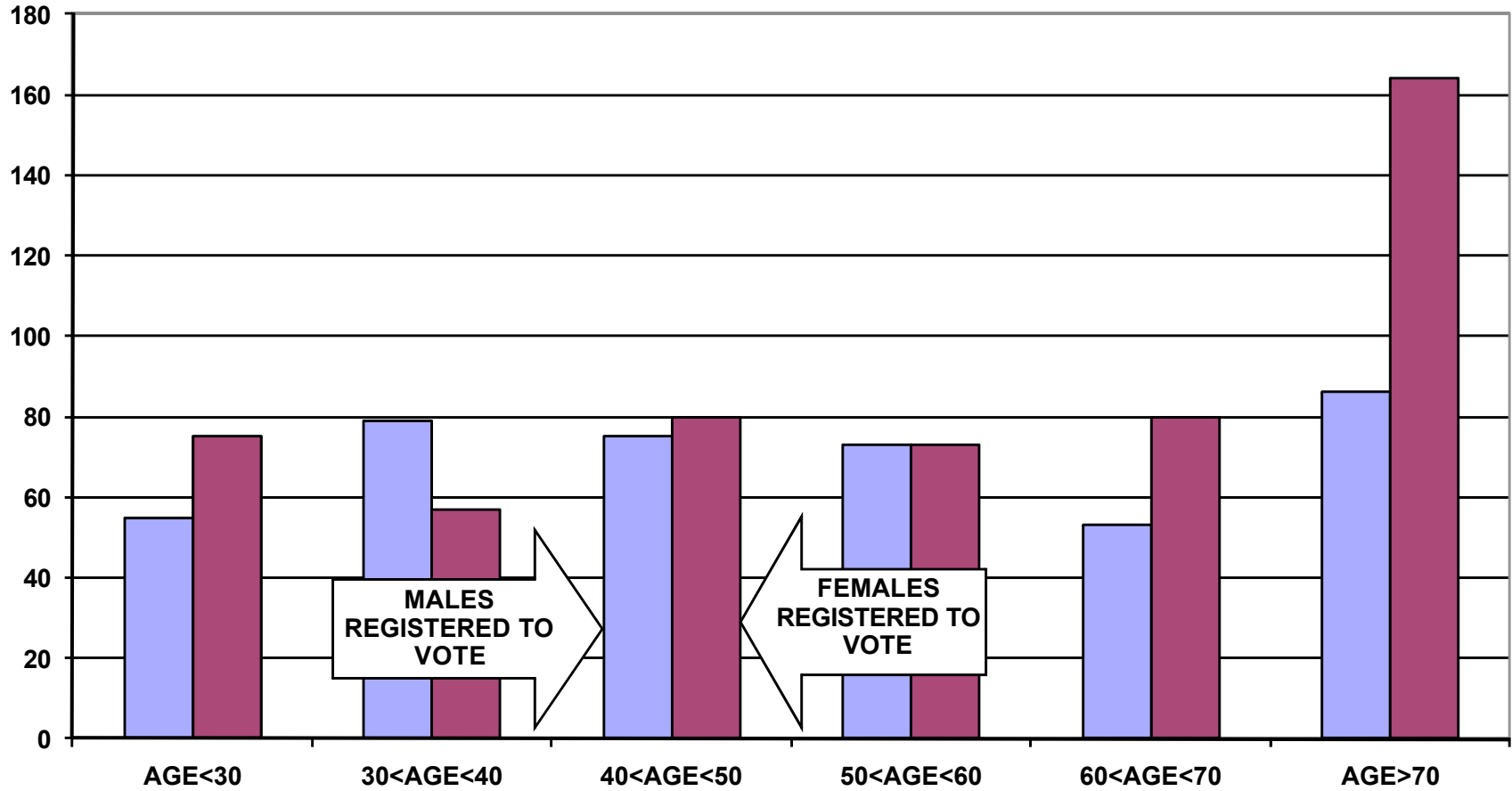
REGISTERED VOTER TURNOUT COMPARISON BETWEEN FALL RIVER AND ST MICHAEL'S HEADS OF HOUSEHOLD



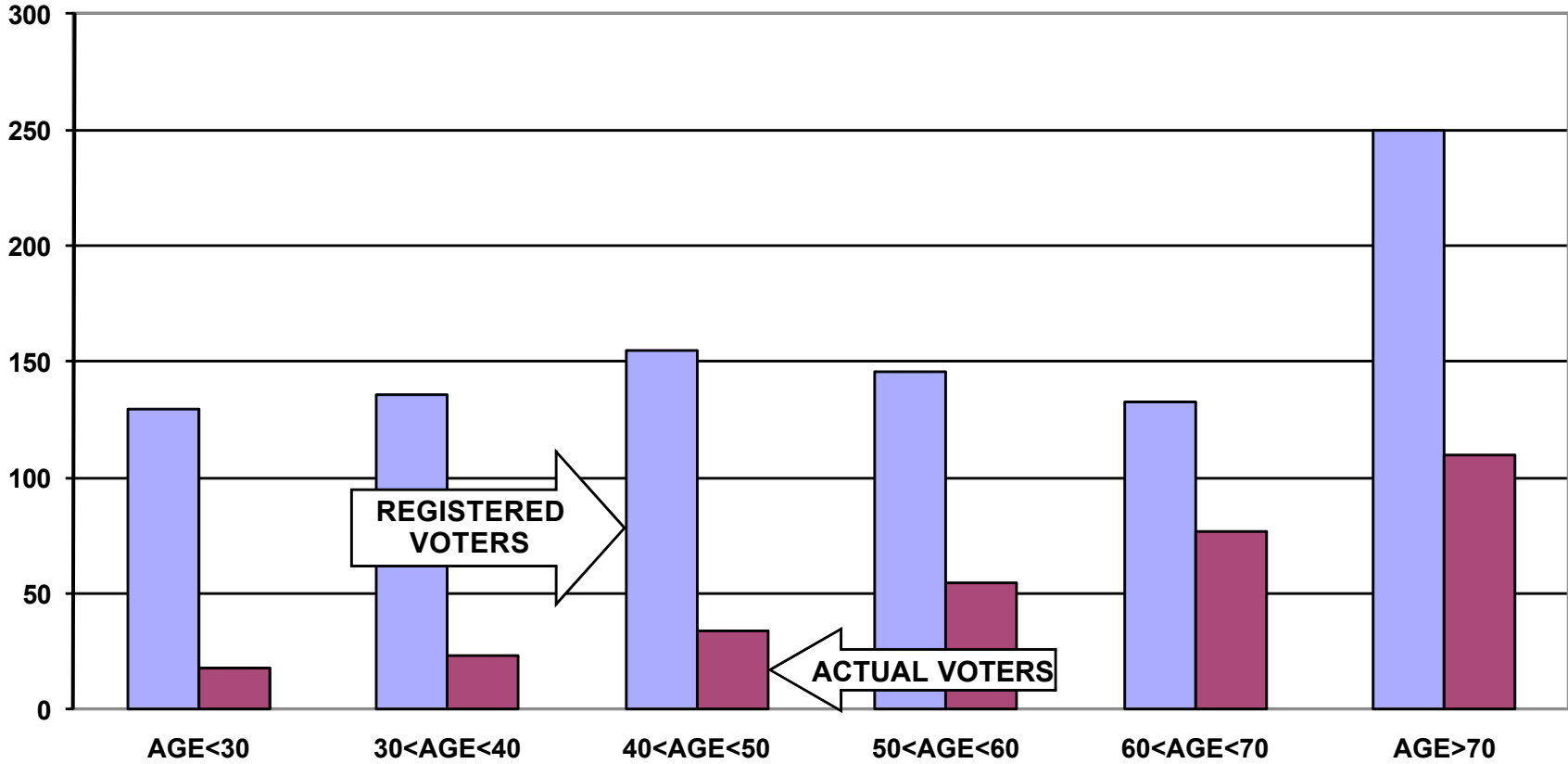
**DIFFERENCE IN VOTER TURNOUT BETWEEN
FALL RIVER VOTERS AND ST MICHAEL'S VOTERS
HEADS OF HOUSEHOLD**



**VOTER REGISTRATION BY AGE AND GENDER
SAINT MICHAELS
ALL HOUSEHOLD MEMBERS**



**REGISTERED VOTERS VERSUS ACTUAL VOTERS SEPTEMBER 2010
SAINT MICHAELS
ALL HOUSEHOLD MEMBERS**



**REGISTERED VOTERS VERSUS ACTUAL VOTERS NOVEMBER 2010
SAINT MICHAELS
ALL HOUSEHOLD MEMBERS**

