

**THE PORTUGUESE AMERICAN CITIZENSHIP PROJECT**  
**A NON-PARTISAN INITIATIVE TO PROMOTE CITIZENSHIP AND CIVIC INVOLVEMENT**



**SAINT ANNE'S PARISH**  
**FALL RIVER, MA.**

**EVALUATION**  
**OF**  
**THE 2010 ELECTIONS**

**April 27, 2011**

**SUPPORTED BY THE**  
**LUSO-AMERICAN**  
**FOUNDATION**

# **REPORT CONTENTS**

<b>STATISTICS AND SUMMARY OF WORK</b>	<b>3</b>
<b>RESULTS</b>	<b>4</b>
<b>RECOMMENDATIONS</b>	<b>7</b>
<b>APPENDIX</b>	<b>8</b>

## **KEY STATISTICS**

- **Number of Parishioners: 3,036**
- **Heads of Household registered to vote in Fall River: 1,498 (49% of all parishioners)**
- **All Household Members registered to vote in Fall River: 2,147**
- **Heads of Household voter turnout in September 2010 – 28% (citywide turnout 23%)**
- **Heads of Household voter turnout in November 2010 – 48% (citywide turnout 41%)**

## **SUMMARY OF WORK**

St. Anne's has been an active participant in the Portuguese American Citizenship Project since the summer of 2000.

For the 2010 elections, postcards in Portuguese and English were not sent out to every registered parish voter reminding them of the date, polling hours, and location of the assigned polling station for the election. This analysis therefore represents voter turnout without the influence of the voter cards.

## RESULTS

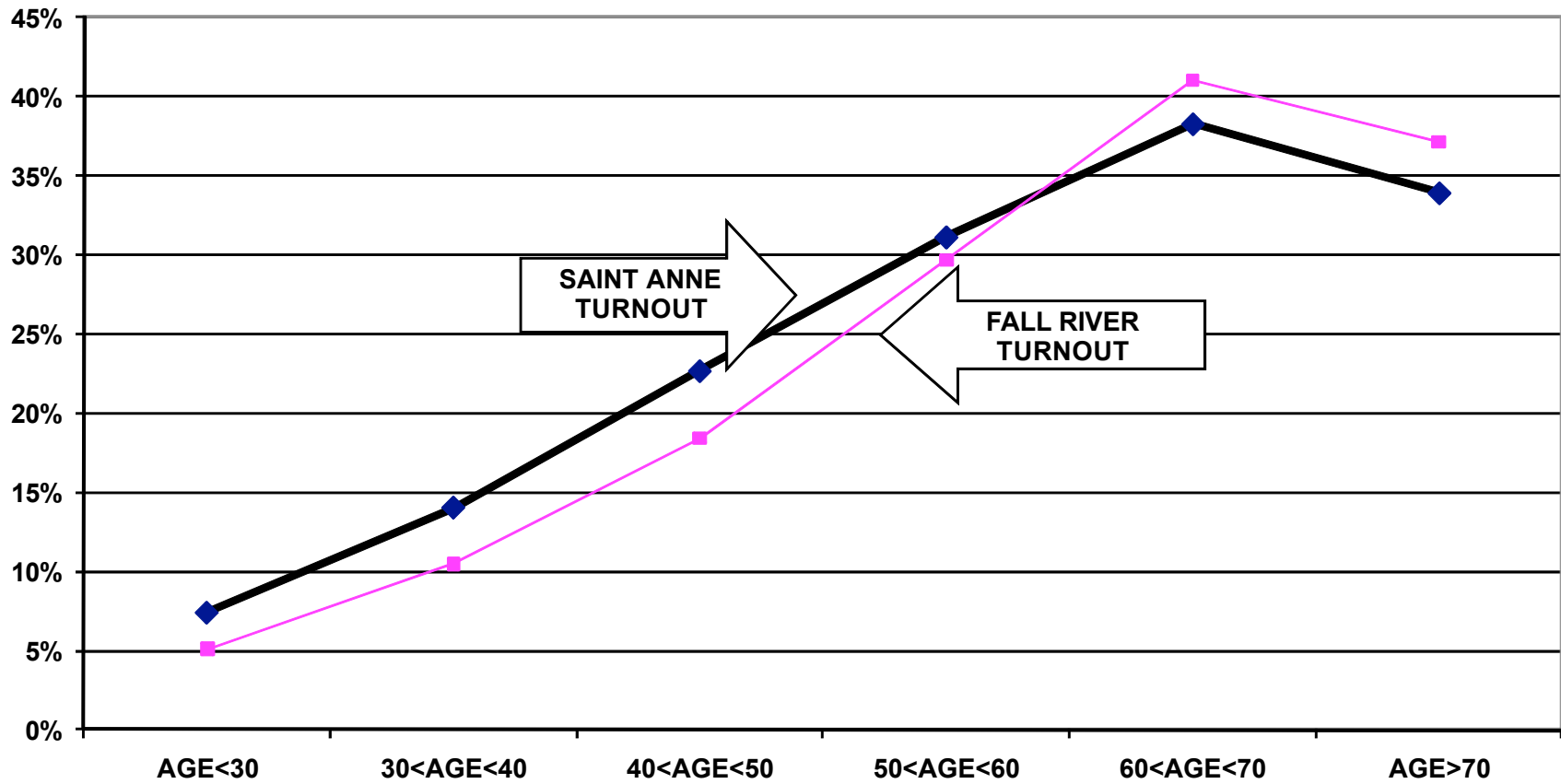
St. Anne's voter turnout for the September and November 2010 elections was consistently higher than citywide turnout. Heads of household turnout for the September Primary Elections was 28%, as compared to the city turnout of 23%. Heads of household turnout for the November 2010 Elections was 48%, as compared to the city turnout of 41%.

Voter turnout is not uniform across age groups. Voters under 30 years of age and even those between 30 and 40 years old had lower turnout rates than the older voters. This is true for the registered voters in the parish and true for the registered voters in the community at large.

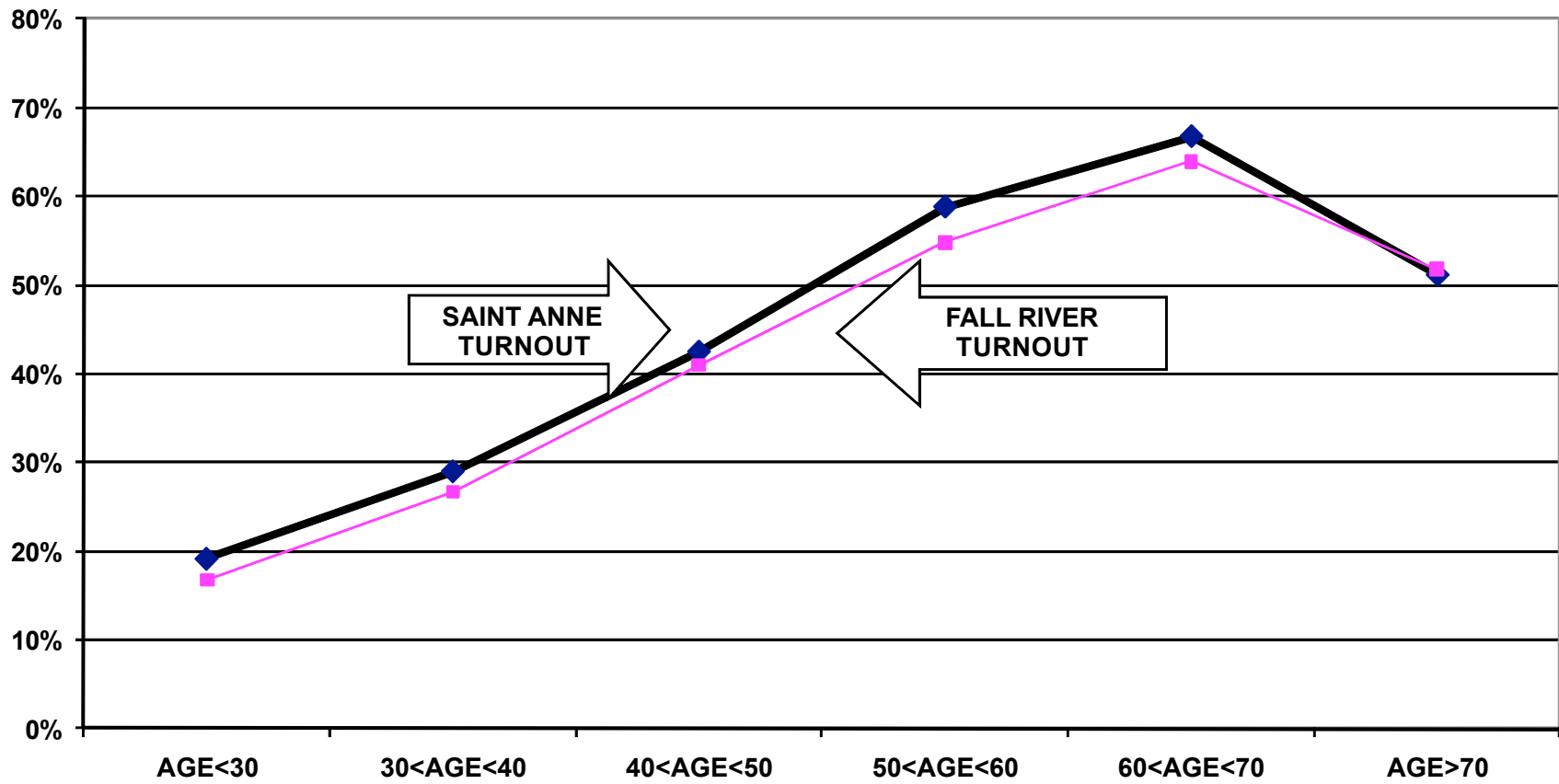
For example, voters under 30 years old associated with the parish had a 7% turnout rate in the September elections compared to a 38% turnout rate for voters between 60 and 70 years old. For the November elections, voters under 30 years old associated with the parish had a 19% turnout rate while voters between 60 and 70 years old had a 67% turnout rate.

The following graphs for the September and November 2010 elections, illustrate the relationship between turnout rates and age. These graphs are for all voters associated with the parish, not just the heads of household.

### TURNOUT BY AGE SEPTEMBER 2010 SAINT ANNE ALL HOUSEHOLD MEMBERS



### TURNOUT BY AGE NOVEMBER 2010 SAINT ANNE ALL HOUSEHOLD MEMBERS



## RECOMMENDATIONS

- In order to encourage increased voter registrations and establish a collective commitment to strong voter turnout, St. Anne's Parish should consider sending letters to every group family reminding them of the group's decade-long involvement in the Citizenship Project and encouraging voter registration for family members who are citizens but have not yet registered to vote.
- The parish should examine measures to increase voter turnout in the under 30 year old and 30 to 40 year old categories. While low voter turnout rates for those under 40 years old is not a problem unique to St. Anne's, it is important to discuss ways the parish can address this issue so as to increase their efforts towards faithful citizenship.

# APPENDIX

Historical Data	9
Registered Voter Turnout Bar Graph	10
Difference in Voter Turnout Bar Graph	11
Voter Registration by Age and Gender Bar Graph	12
Registered Voters vs. Actual Voters September 2010 Bar Graph	13
Registered Voters vs. Actual Voters November 2010 Bar Graph	14



**HISTORICAL DATA: ST ANNE'S PARISH  
REGISTRATION - VOTING**

<b>MEMBERS RESIDING IN FALL RIVER</b>	<b>2 433</b>
<b>MEMBERS REGISTERED TO VOTE IN CITY OF FALL RIVER</b>	<b>1 498 HEADS OF HOUSEHOLD</b>
	<b>2 147 ALL FAMILY MEMBERS</b>

**VOTING PERFORMANCE OF FALL RIVER RESIDENTS**

**HEADS OF HOUSEHOLD**

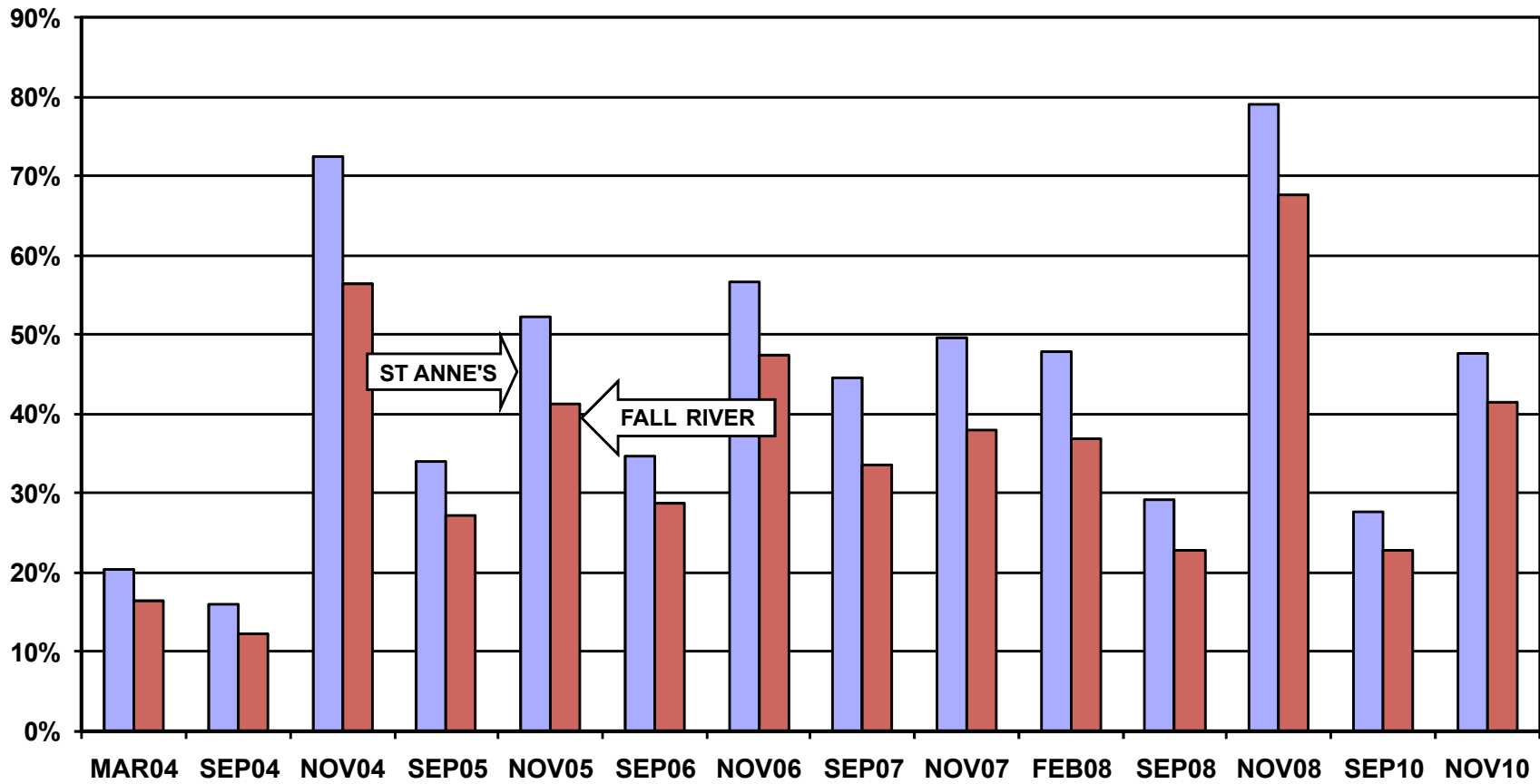
**AS PERCENT OF ALL  
REGISTERED MEMBERS  
ELIGIBLE TO VOTE**

**CITY WIDE VOTING HISTORY  
(AS PERCENT OF ALL  
REGISTERED VOTERS)**

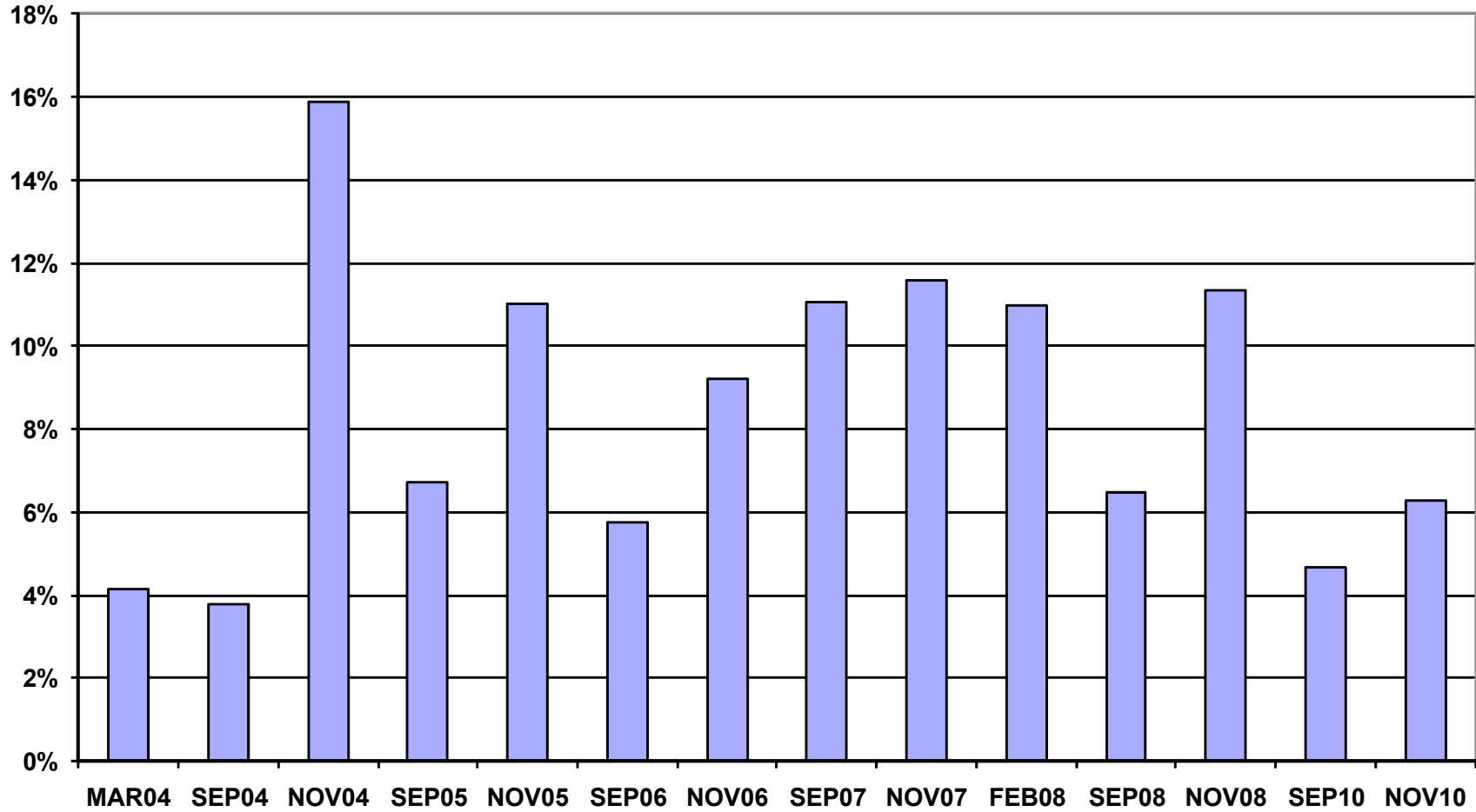
<b>VOTERS MAR 2004</b>	<b>326</b>
<b>VOTERS SEP 2004</b>	<b>254</b>
<b>VOTERS NOV 2004</b>	<b>1153</b>
<b>VOTERS SEP 2005*</b>	<b>483</b>
<b>VOTERS NOV 2005*</b>	<b>743</b>
<b>VOTERS SEP 2006</b>	<b>722</b>
<b>VOTERS NOV 2006</b>	<b>958</b>
<b>VOTERS SEP 2007</b>	<b>672</b>
<b>VOTERS NOV 2007</b>	<b>747</b>
<b>VOTERS FEB 2008</b>	<b>715</b>
<b>VOTERS SEP 2008</b>	<b>437</b>
<b>VOTERS NOV 2008</b>	<b>1182</b>
<b>VOTERS SEP 2010</b>	<b>412</b>
<b>VOTERS NOV 2010</b>	<b>714</b>

<b>COMPARABLE STATISTICS</b>		
	<b>20.5%</b>	<b>16.3%</b>
	<b>15.9%</b>	<b>12.2%</b>
	<b>72.3%</b>	<b>56.4%</b>
	<b>33.9%</b>	<b>27.2%</b>
	<b>52.2%</b>	<b>41.2%</b>
	<b>34.6%</b>	<b>28.8%</b>
	<b>56.5%</b>	<b>47.3%</b>
	<b>44.5%</b>	<b>33.4%</b>
	<b>49.5%</b>	<b>37.9%</b>
	<b>47.7%</b>	<b>36.8%</b>
	<b>29.2%</b>	<b>22.7%</b>
	<b>78.9%</b>	<b>67.5%</b>
	<b>27.5%</b>	<b>22.9%</b>
	<b>47.7%</b>	<b>41.4%</b>

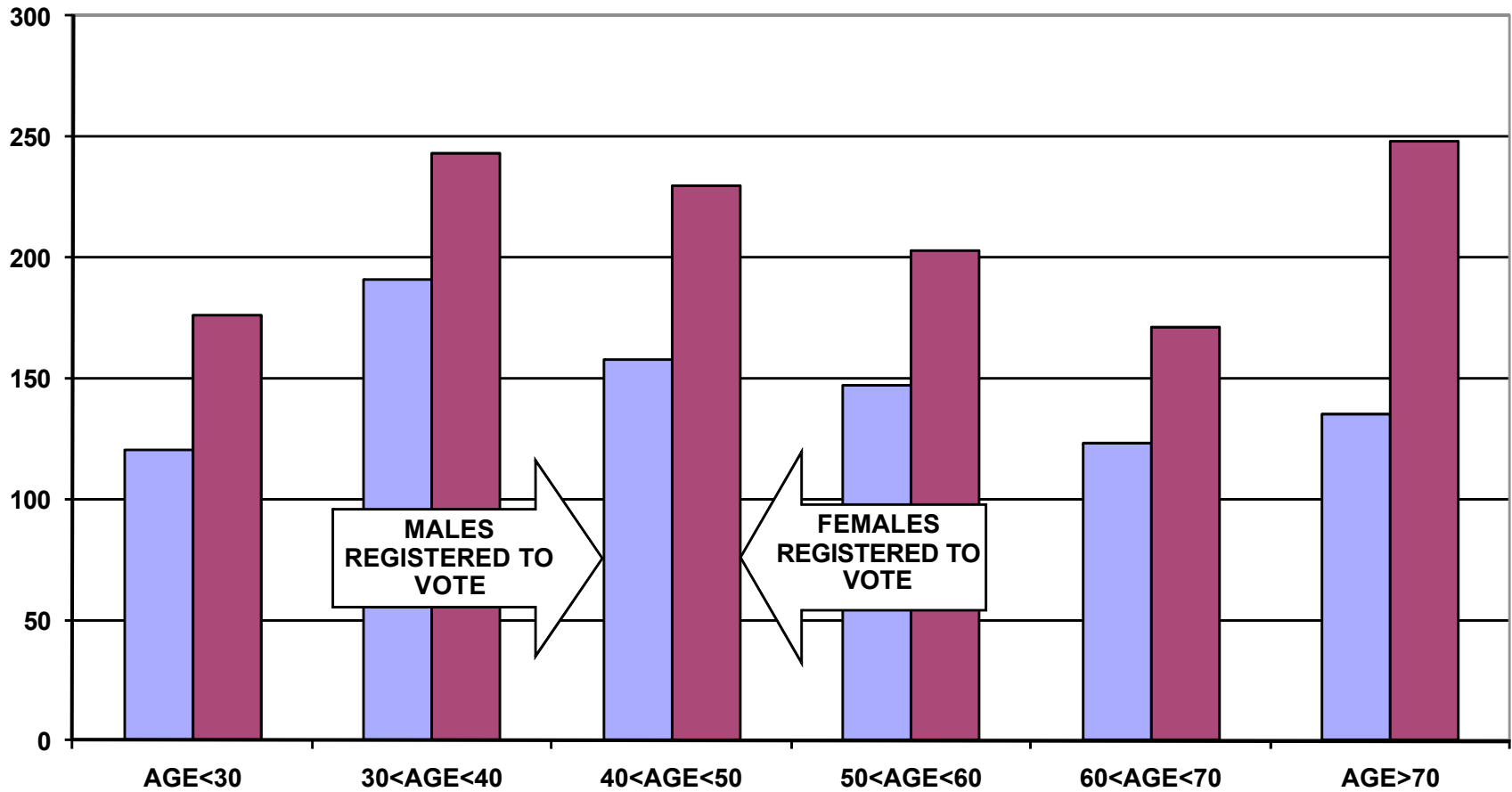
### REGISTERED VOTER TURNOUT COMPARISON BETWEEN FALL RIVER AND ST ANNE'S HEADS OF HOUSEHOLD



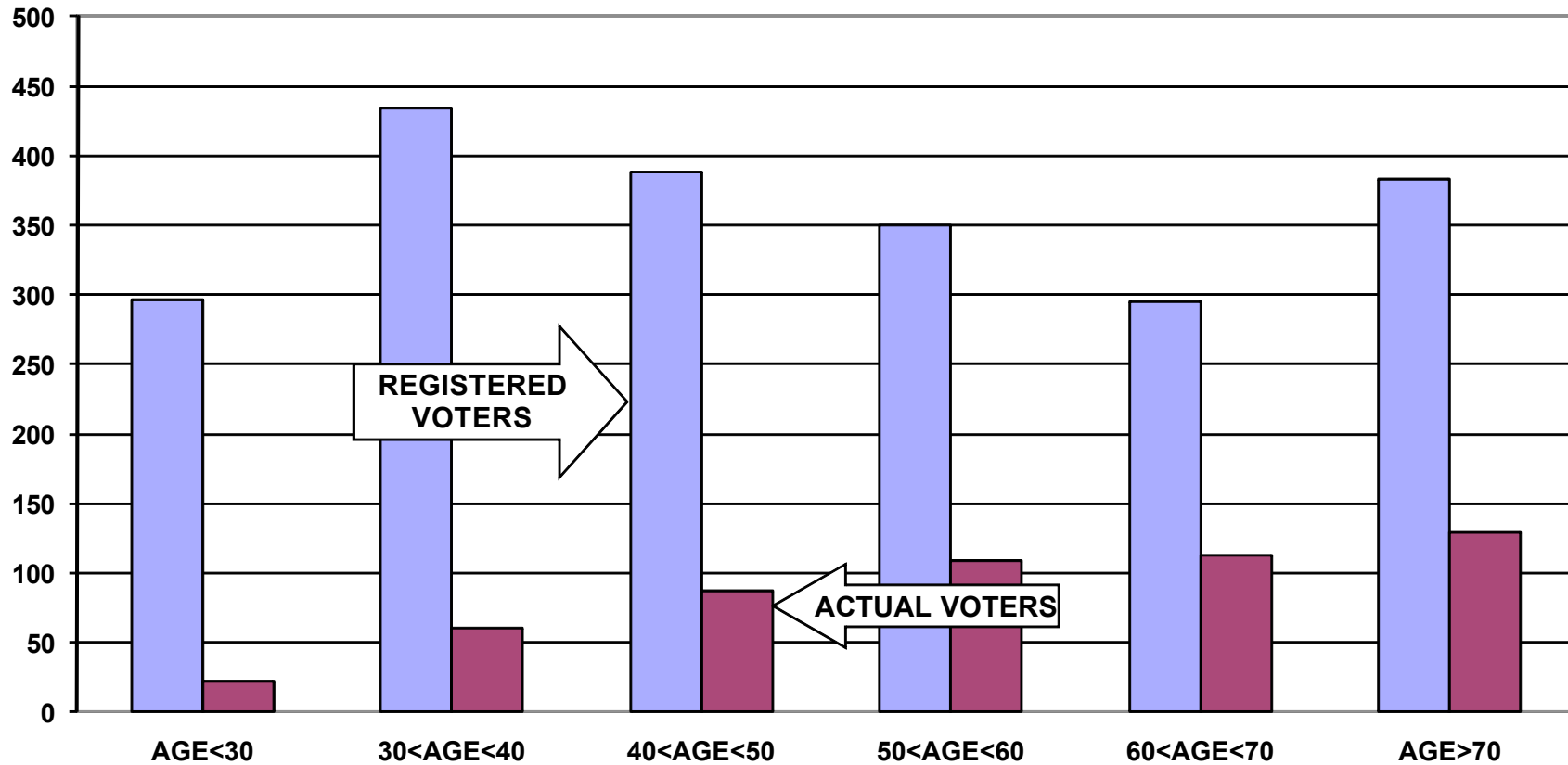
### DIFFERENCE IN VOTER TURNOUT BETWEEN ST ANNE'S VOTERS AND FALL RIVER VOTERS HEADS OF HOUSEHOLD



**VOTER REGISTRATION BY AGE AND GENDER  
SAINT ANNE  
ALL HOUSEHOLD MEMBERS**



**REGISTERED VOTERS VERSUS ACTUAL VOTERS SEPTEMBER 2010  
SAINT ANNE  
ALL HOUSEHOLD MEMBERS**



**REGISTERED VOTERS VERSUS ACTUAL VOTERS NOVEMBER 2010  
SAINT ANNE  
ALL HOUSEHOLD MEMBERS**

