

**THE PORTUGUESE AMERICAN CITIZENSHIP PROJECT**  
**A NON-PARTISAN INITIATIVE TO PROMOTE CITIZENSHIP AND CIVIC INVOLVEMENT**



**SANTO CRISTO PARISH**  
**FALL RIVER, MA.**

**EVALUATION**  
**OF**  
**THE 2010 ELECTIONS**

**April 24, 2011**

**SUPPORTED BY THE**  
**LUSO-AMERICAN**  
**FOUNDATION**

# **REPORT CONTENTS**

<b>STATISTICS AND SUMMARY OF WORK</b>	<b>3</b>
<b>RESULTS</b>	<b>4</b>
<b>RECOMMENDATIONS</b>	<b>7</b>
<b>APPENDIX</b>	<b>8</b>

## **KEY STATISTICS**

- **Number of Parishioners: 3,844**
- **Heads of Household registered to vote in Fall River: 1,690 (44% of all parishioners)**
- **All Household Members registered to vote in Fall River: 2,085**
- **Heads of Household voter turnout in September 2010 – 33% (citywide turnout 23%)**
- **Heads of Household voter turnout in November 2010 – 53% (citywide turnout 41%)**

## **SUMMARY OF WORK**

Santo Cristo has been an active participant in the Portuguese American Citizenship Project since the summer of 2000.

For the 2010 September and November elections, postcards were not sent to every registered parish voter reminding them of the date, polling hours, and location of the assigned polling station for the election. This analysis therefore represents voter turnout without the influence of the voter cards.

## RESULTS

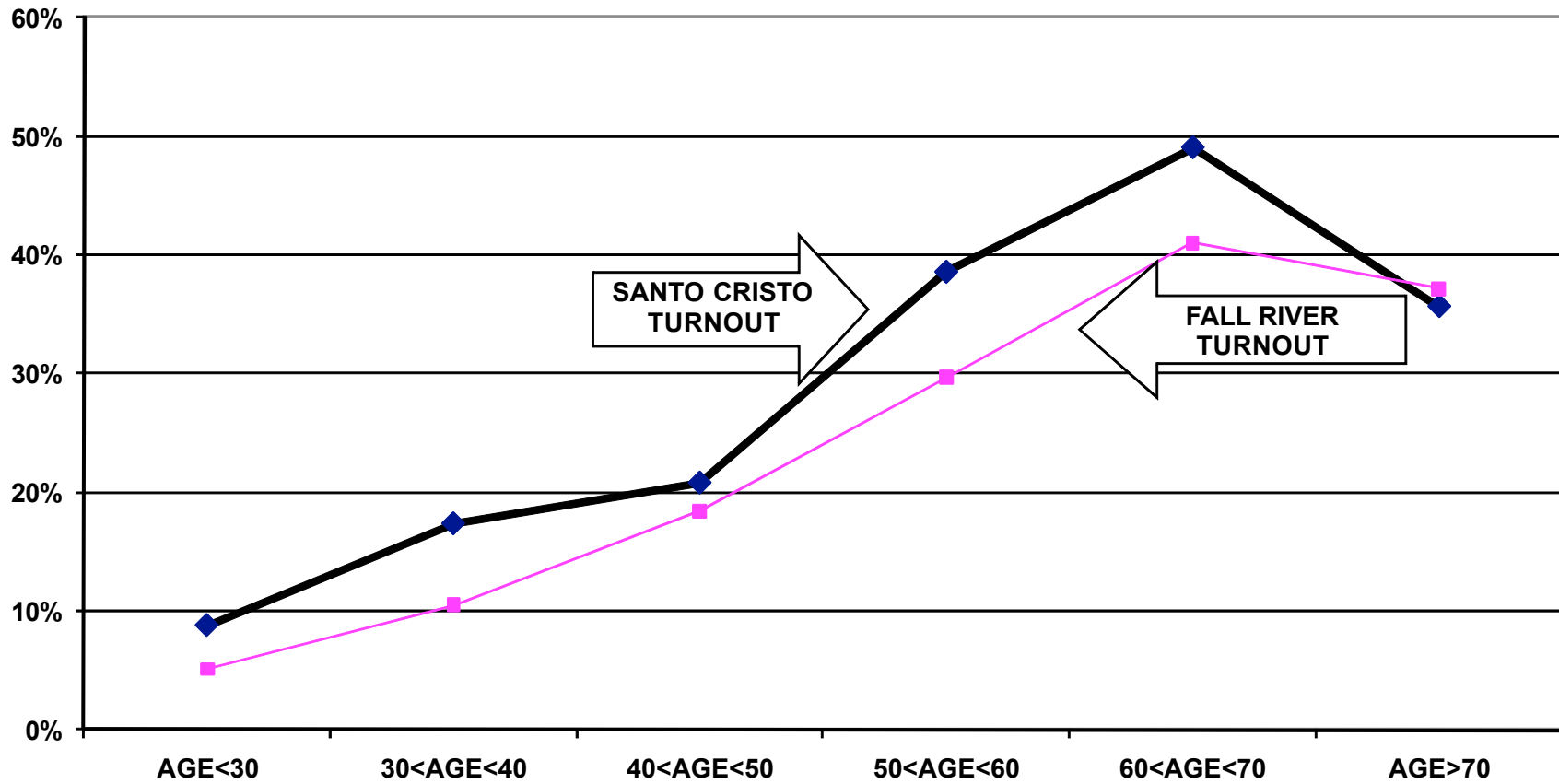
The Santo Cristo voter turnout for the September and November 2010 elections was consistently higher than citywide turnout. The Santo Cristo heads of household turnout for the September Primary Elections was 33%, as compared to the city turnout of 23%. Heads of household turnout for the November 2010 General Elections was 53%, as compared to the city turnout of 41%.

Voter turnout is not uniform across age groups. Voters under 30 years of age and even those between 30 and 40 years old had lower turnout rates than the older voters. This is true for the registered voters in the parish and true for the registered voters in the community at large.

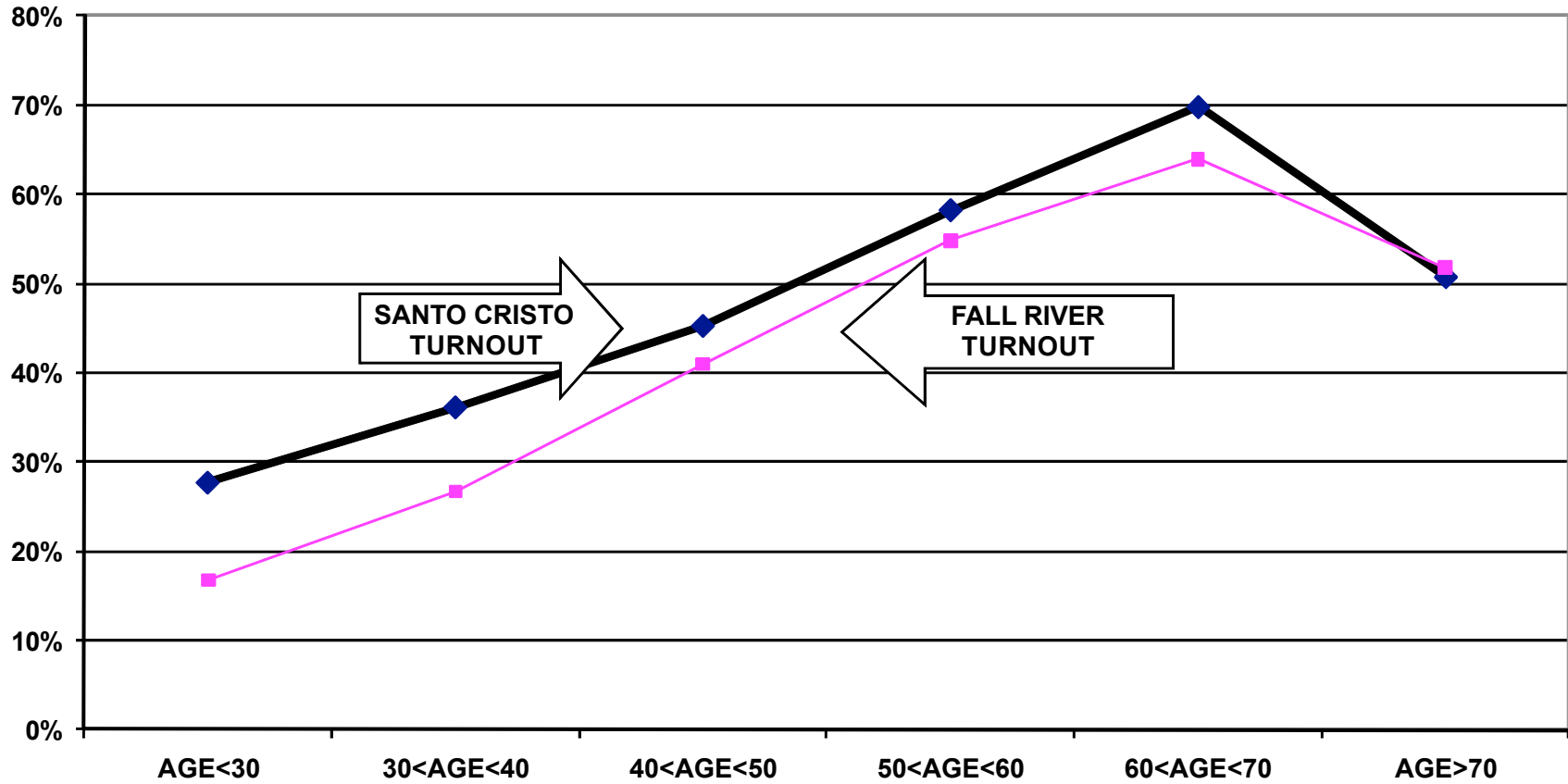
For example, voters under 30 years old associated with the parish had a 9% turnout rate in the September elections compared to a 49% turnout rate for voters between 60 and 70 years old. For the November elections, voters under 30 years old associated with the parish had a 28% turnout rate while voters between 60 and 70 years old had a 70% turnout rate.

The following graphs for the September and November 2010 elections, illustrate the relationship between turnout rates and age. These graphs are for all voters associated with the parish, not just the heads of household.

**TURNOUT BY AGE SEPTEMBER 2010  
SANTO CRISTO  
ALL HOUSEHOLD MEMBERS**



### TURNOUT BY AGE NOVEMBER 2010 SANTO CRISTO ALL HOUSEHOLD MEMBERS



## RECOMMENDATIONS

- In order to encourage increased voter registrations and establish a collective commitment to strong voter turnout, Santo Cristo Parish should consider sending letters to every group family reminding them of the group's decade-long involvement in the Citizenship Project and encouraging voter registration for family members who are citizens but have not yet registered to vote.
- The parish should examine measures to increase voter turnout in the under 30 year old and 30-to-40 year old categories. While low voter turnout rates for those under 40 years old is not a problem unique to Santo Cristo, it is important to discuss ways the parish can address this issue so as to increase their efforts towards faithful citizenship.

# APPENDIX

Historical Data	9
Registered Voter Turnout Bar Graph	10
Difference in Voter Turnout Bar Graph	11
Voter Registration by Age and Gender Bar Graph	12
Registered Voters vs. Actual Voters September 2010 Bar Graph	13
Registered Voters vs. Actual Voters November 2010 Bar Graph	14



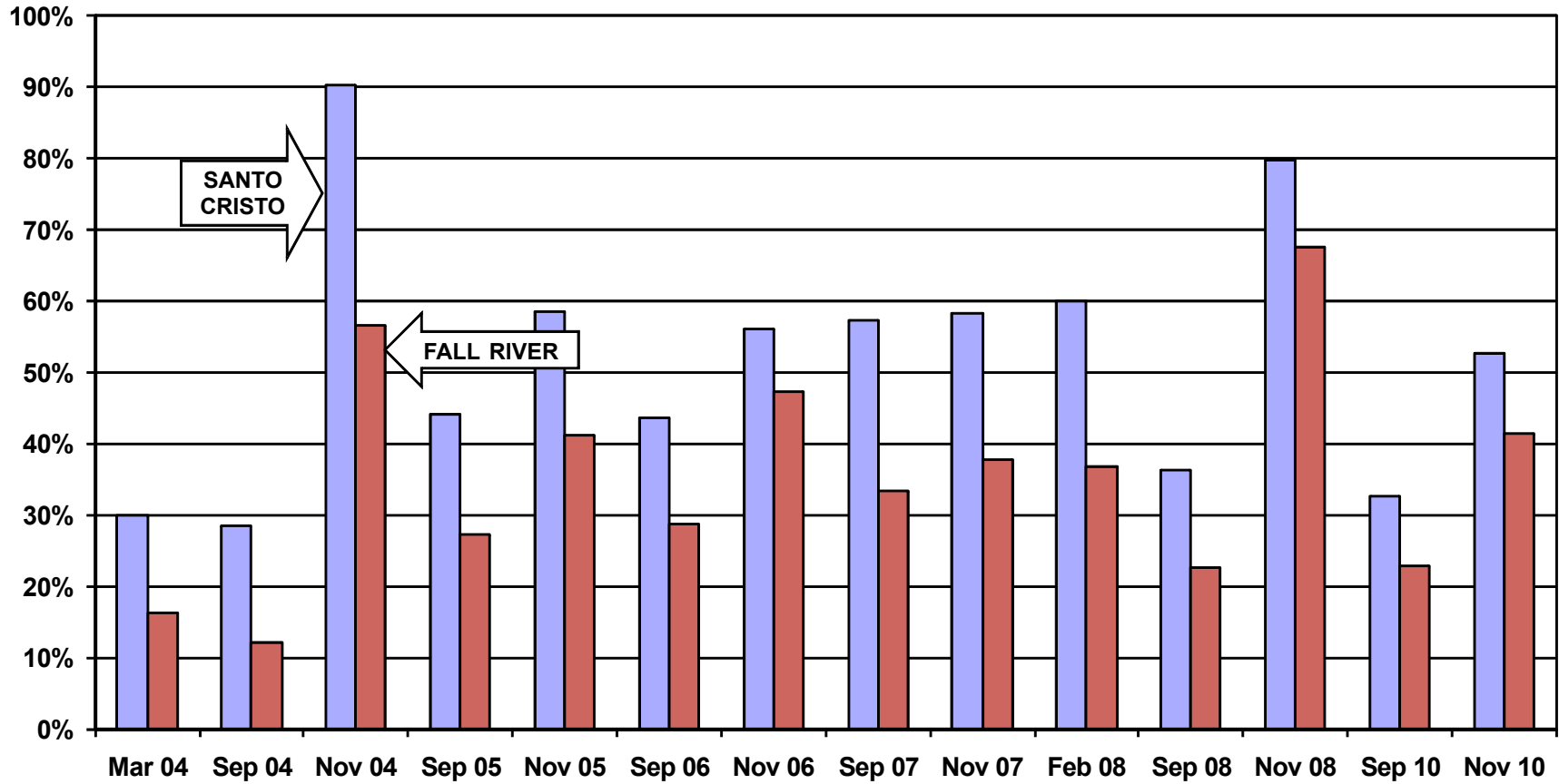
**HISTORICAL DATA: SANTO CRISTO PARISH  
REGISTRATION - VOTING**

<b>MEMBERS RESIDING IN FALL RIVER</b>	<b>3,844</b>	
<b>MEMBERS REGISTERED TO VOTE IN THE CITY OF FALL RIVER</b>	<b>1,685</b>	<b>HEADS OF HOUSEHOLD</b>
	<b>2,085</b>	<b>ALL HOUSEHOLD MEMBERS</b>

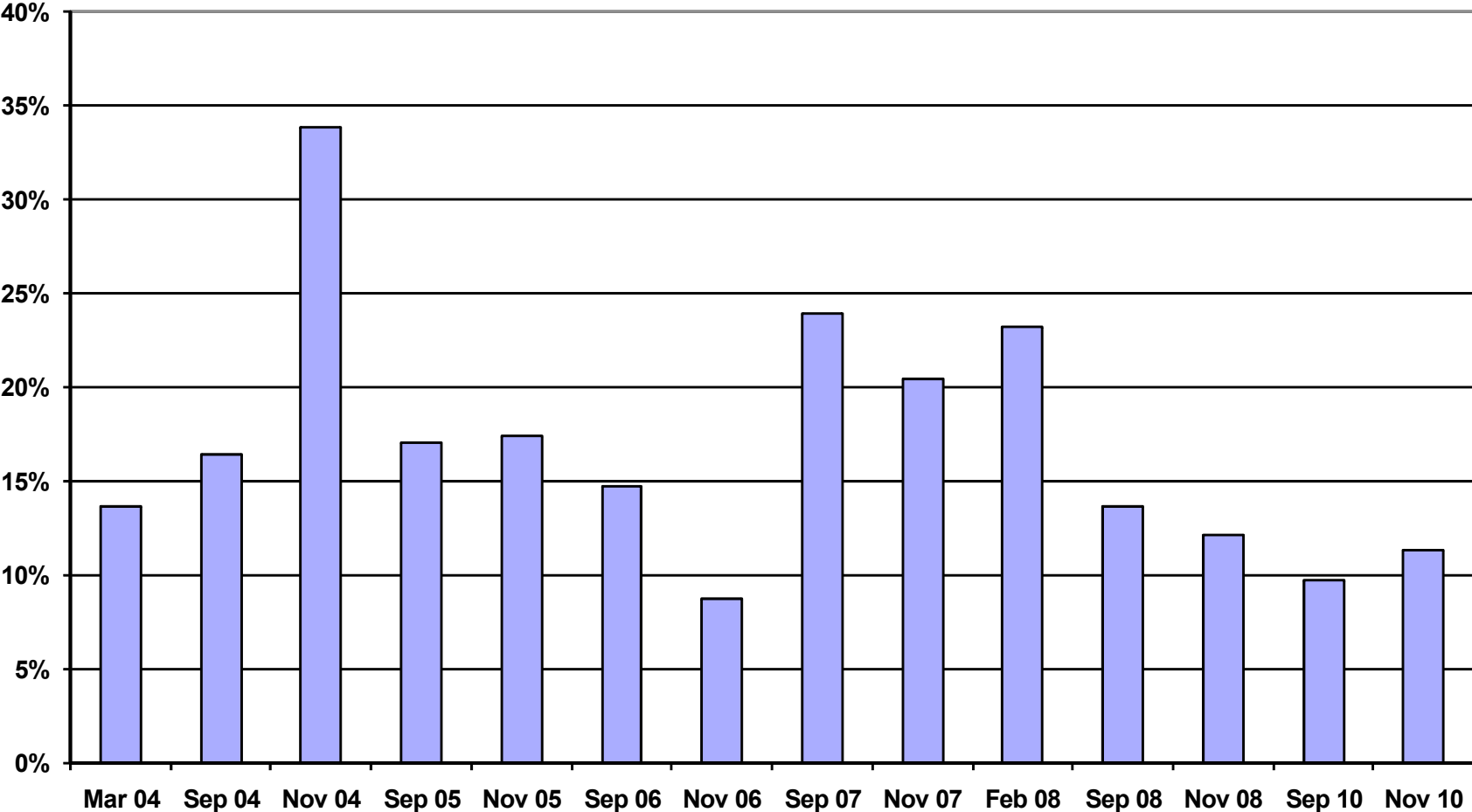
**VOTING PERFORMANCE OF FALL RIVER RESIDENTS**

	<b>HEADS OF HOUSEHOLD</b>	<b>AS PERCENT OF ALL REGISTERED MEMBERS ELIGIBLE TO VOTE</b>	<b>CITYWIDE VOTING HISTORY AS PERCENT OF ALL REGISTERED VOTERS)</b>
		<b>COMPARABLE STATISTICS</b>	
<b>VOTERS MAR 2004</b>	<b>412</b>	<b>23.5%</b>	<b>16.3%</b>
<b>VOTERS SEP 2004</b>	<b>393</b>	<b>22.4%</b>	<b>12.2%</b>
<b>VOTERS NOV 2004</b>	<b>1242</b>	<b>70.8%</b>	<b>56.4%</b>
<b>VOTERS SEP 2005</b>	<b>722</b>	<b>44.2%</b>	<b>27.2%</b>
<b>VOTERS NOV 2005</b>	<b>958</b>	<b>58.6%</b>	<b>41.2%</b>
<b>VOTERS SEP 2006</b>	<b>722</b>	<b>43.6%</b>	<b>28.8%</b>
<b>VOTERS NOV 2006</b>	<b>958</b>	<b>56.0%</b>	<b>47.3%</b>
<b>VOTERS SEP 2007</b>	<b>727</b>	<b>57.4%</b>	<b>33.4%</b>
<b>VOTERS NOV 2007</b>	<b>739</b>	<b>58.3%</b>	<b>37.9%</b>
<b>VOTERS FEB 2008</b>	<b>1009</b>	<b>60.0%</b>	<b>36.8%</b>
<b>VOTERS SEP 2008</b>	<b>597</b>	<b>36.4%</b>	<b>22.7%</b>
<b>VOTERS NOV 2008</b>	<b>1363</b>	<b>79.6%</b>	<b>67.5%</b>
<b>VOTERS SEP 2010</b>	<b>548</b>	<b>32.5%</b>	<b>22.9%</b>
<b>VOTERS NOV 2010</b>	<b>888</b>	<b>52.7%</b>	<b>41.4%</b>

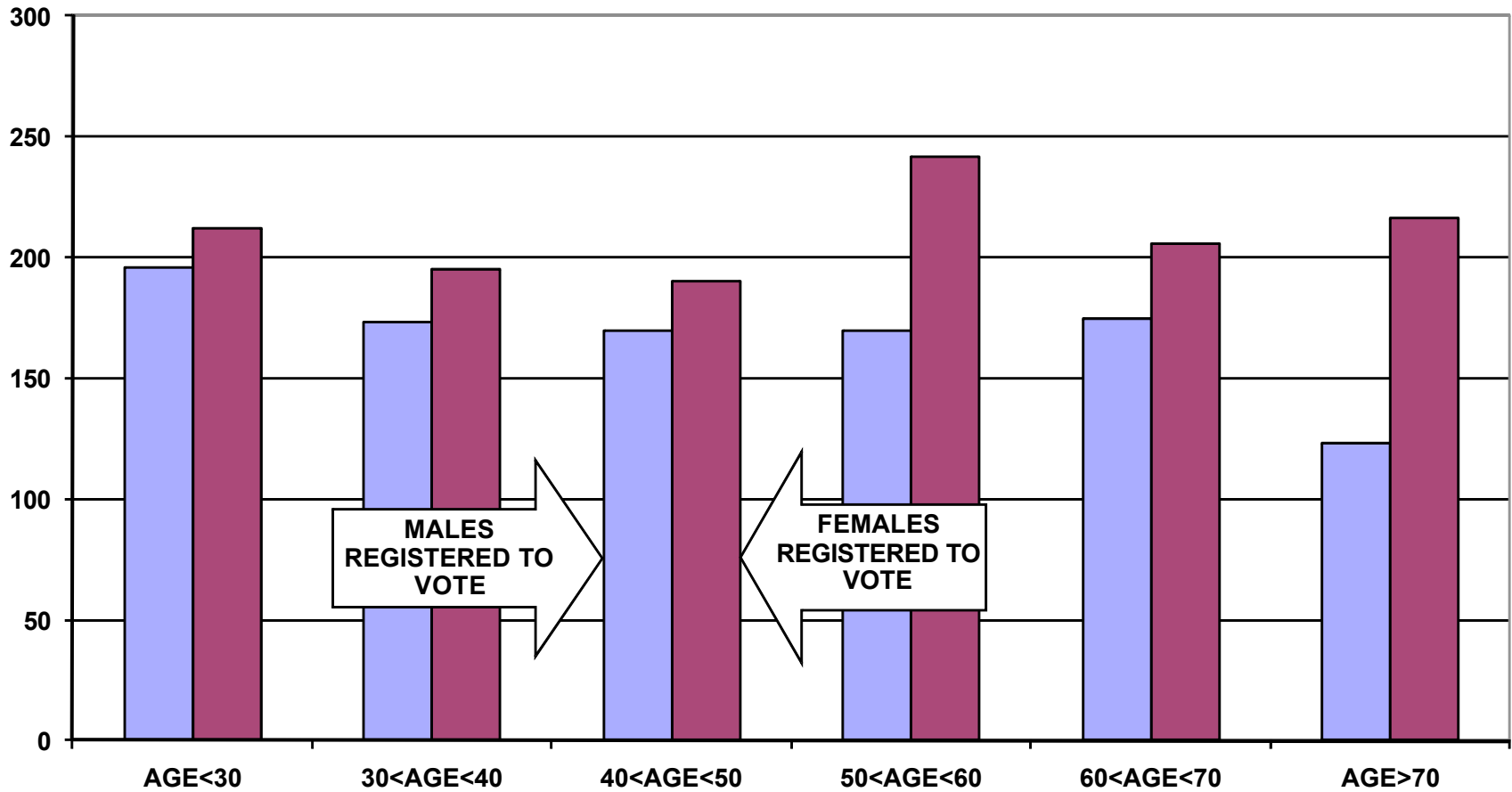
### REGISTERED VOTER TURNOUT COMPARISON BETWEEN FALL RIVER AND SANTO CRISTO HEADS OF HOUSEHOLD



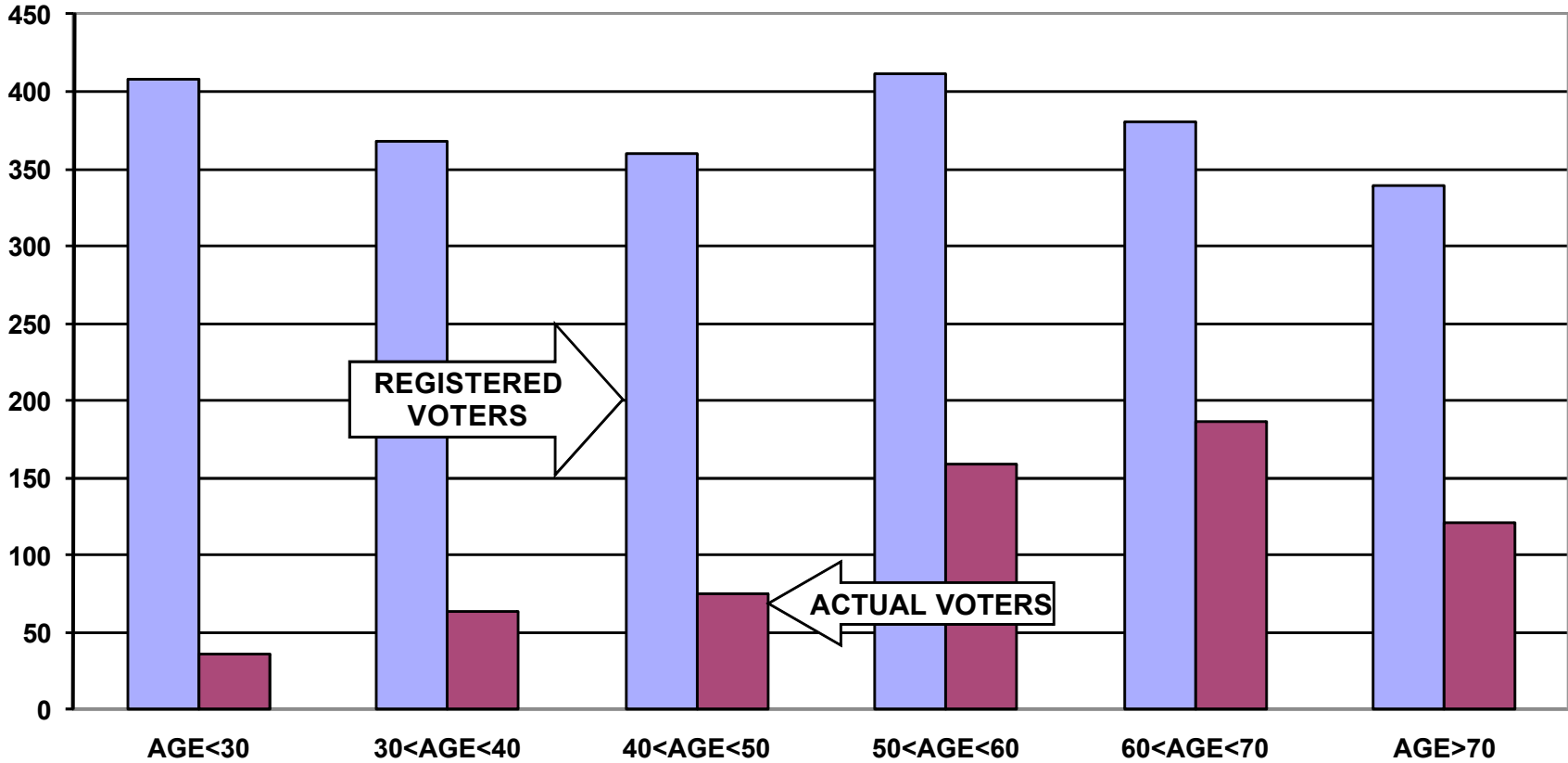
**DIFFERENCE IN VOTER TURNOUT BETWEEN  
SANTO CRISTO VOTERS AND FALL RIVER VOTERS  
HEADS OF HOUSEHOLD**



**VOTER REGISTRATION BY AGE AND GENDER  
SANTO CRISTO  
ALL HOUSEHOLD MEMBERS**



**REGISTERED VOTERS VERSUS ACTUAL VOTERS SEPTEMBER 2010  
SANTO CRISTO  
ALL HOUSEHOLD MEMBERS**



**REGISTERED VOTERS VERSUS ACTUAL VOTERS NOVEMBER 2010  
SANTO CRISTO  
ALL HOUSEHOLD MEMBERS**

