

**THE PORTUGUESE AMERICAN CITIZENSHIP PROJECT**  
**A NON-PARTISAN INITIATIVE TO PROMOTE CITIZENSHIP AND CIVIC INVOLVEMENT**



**ESPIRITO SANTO PARISH**  
**FALL RIVER, MA.**

**EVALUATION**  
**OF**  
**THE 2010 ELECTIONS**

**April 30, 2011**

**SUPPORTED BY THE**  
**LUSO-AMERICAN**  
**FOUNDATION**

# **REPORT CONTENTS**

<b>STATISTICS AND SUMMARY OF WORK</b>	<b>3</b>
<b>RESULTS</b>	<b>4</b>
<b>RECOMMENDATIONS</b>	<b>7</b>
<b>APPENDIX</b>	<b>8</b>

## KEY STATISTICS

- **Number of Parishioners: 4,363**
- **Heads of Household registered to vote in Fall River: 1,894 (43% of all parishioners)**
- **All Household Members registered to vote in Fall River: 2,185**
- **Heads of Household voter turnout<sup>1</sup> in September 2010 – 30% (citywide turnout 23%)**
- **Heads of Household voter turnout in November 2010 – 47% (citywide turnout 41%)**

## SUMMARY OF WORK

Espirito Santo has been an active participant in the Portuguese American Citizenship Project since the very beginning in 1999.

For the 2010 elections, postcards in Portuguese and English were sent to every registered parish voter reminding them of the date, polling hours, and location of the assigned polling station for the election.

---

<sup>1</sup> Voter turnout is the number of citizens voting in an election divided by the total number of citizens registered to vote. Voter turnout statistics are for Fall River residents only.

## RESULTS

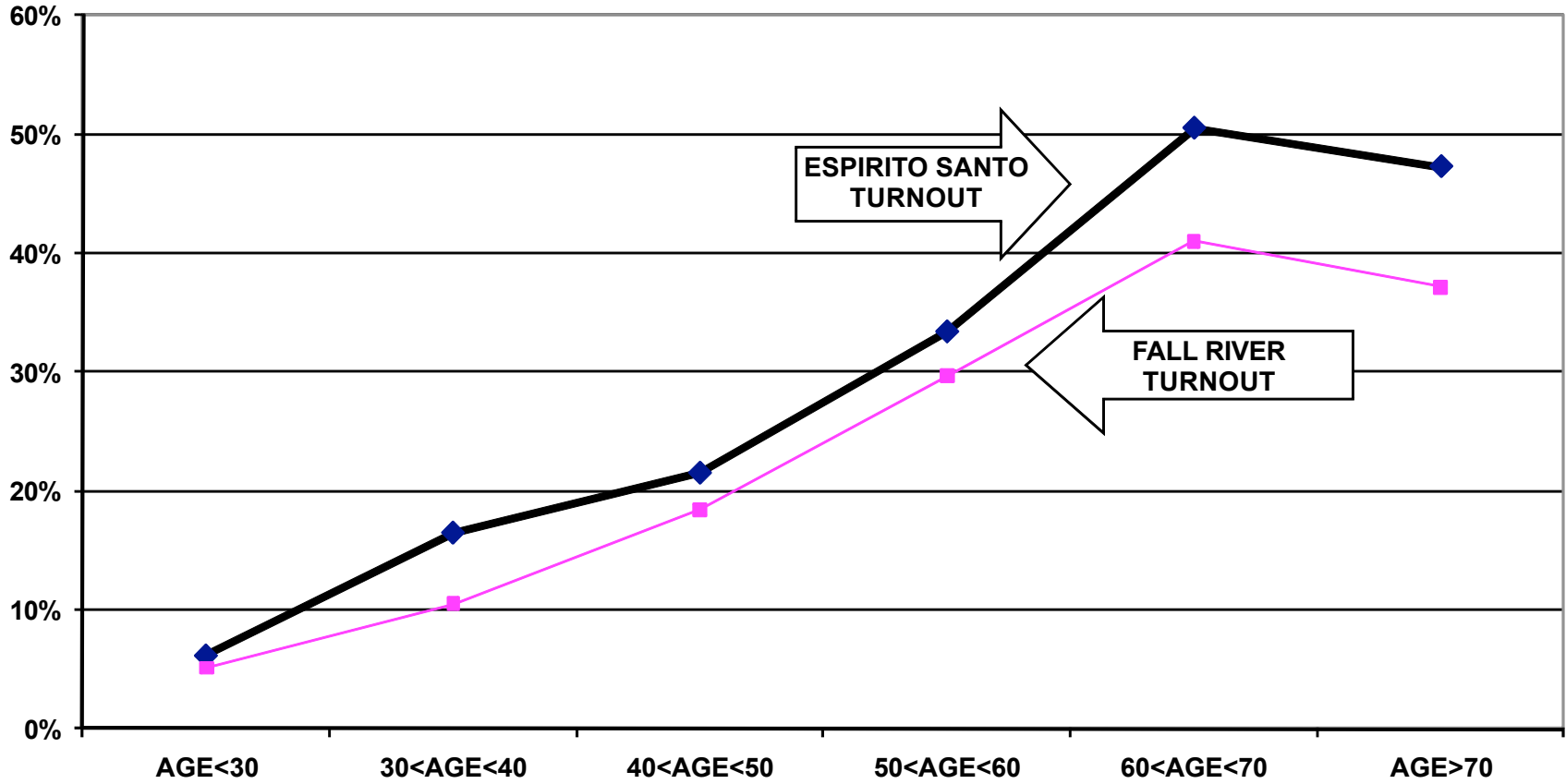
The Espirito Santo voter turnout for the September and November 2010 elections was consistently higher than citywide turnout. Heads of household turnout for the September Primary Elections was 30%, as compared to the city turnout of 23%. The Espirito Santo heads of household turnout for the heads of household turnout for the November 2010 General Elections was 47%, as compared to the city turnout of 41%.

Voter turnout is not uniform across age groups. Voters under 30 years of age and even those between 30 and 40 years old had lower turnout rates than the older voters. This is true for the registered voters in the parish and true for the registered voters in the community at large.

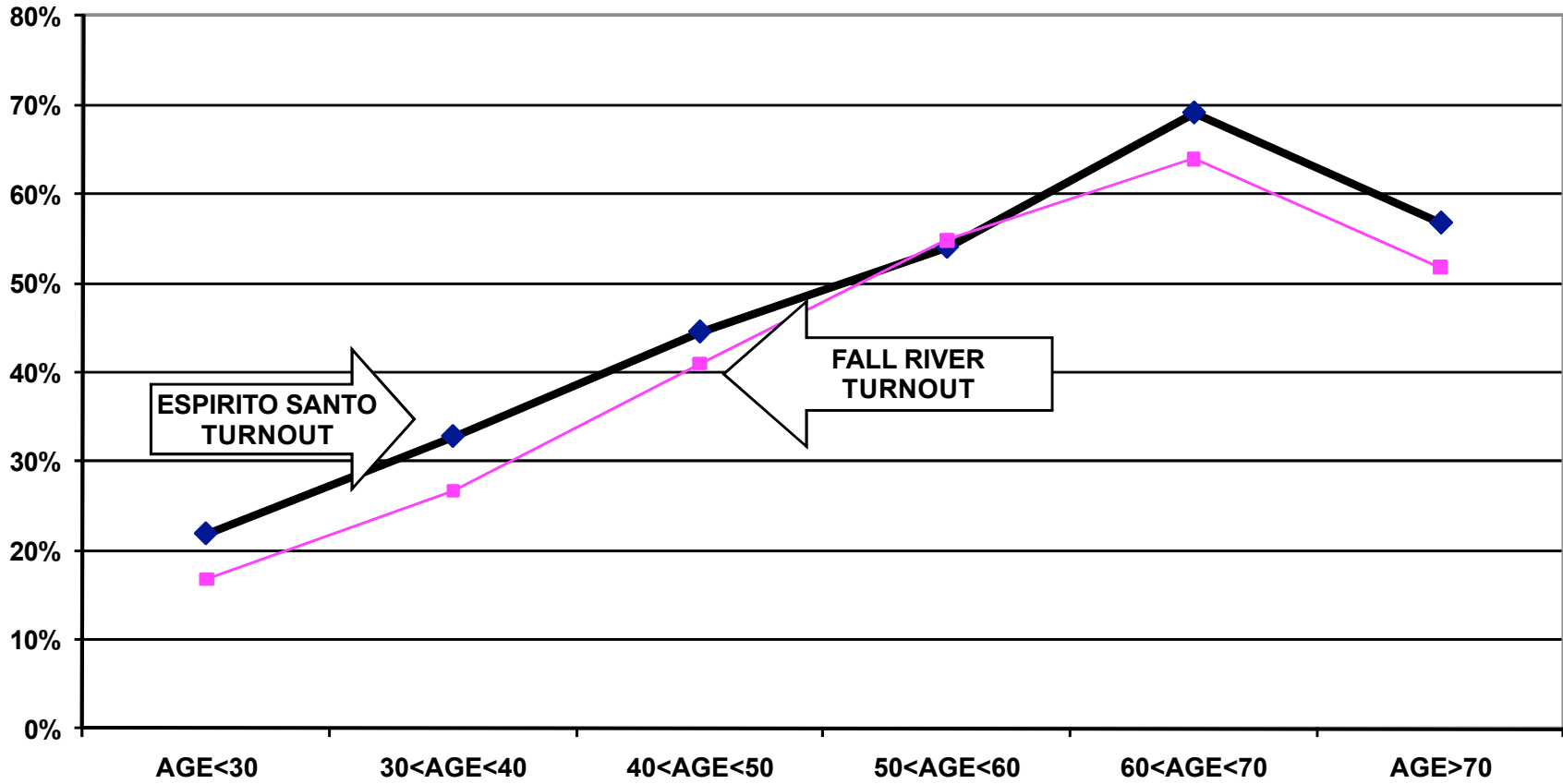
For example, voters under 30 years old associated with the parish had a 6% turnout rate in the September elections, compared to a 51% turnout rate for voters between 60 and 70 years old. For the November elections, voters under 30 years old associated with the parish had a 22% turnout rate while voters between 60 and 70 years old had a 69% turnout rate.

The following graphs for the September and November 2010 elections, illustrate the relationship between turnout rates and age. These graphs are for all voters associated with the parish, not just the heads of household.

### TURNOUT BY AGE SEPTEMBER 2010 ESPIRITO SANTO ALL HOUSEHOLD MEMBERS



### TURNOUT BY AGE NOVEMBER 2010 ESPIRITO SANTO ALL HOUSEHOLD MEMBERS



## RECOMMENDATIONS

- If the parish cannot provide the financial support for this mailing and/or cannot accomplish the logistics of printing and mailing the voter cards, interested members of the community should examine the accomplishments of the past twelve years and determine how to build on these achievements using alternative methods of promoting civic participation.
- The parish which has over 2,100 registered voters and an exceptionally high voter turnout rate, is a force to be reckoned with in the Bristol Country and Fall River political arena. The local political leadership acknowledges the voting strength of the parish but needs to be unequivocally told what the parishioners want from their government. Espirito Santo's work in staging the October 2007 Candidate Night for Mayor was an excellent example of how best to allow parishioners themselves to determine the key issues of an election. Formal debates and other methods of communication are necessary to allow candidates for public office to know fully what the community wants from their leaders.

# APPENDIX

Historical Data	9
Registered Voter Turnout Bar Graph	10
Difference in Voter Turnout Bar Graph	11
Voter Registration by Age and Gender Bar Graph	12
Registered Voters vs. Actual Voters September 2010 Bar Graph	13
Registered Voters vs. Actual Voters November 2010 Bar Graph	14



**HISTORICAL DATA: ESPIRITO SANTO  
REGISTRATION - VOTING**

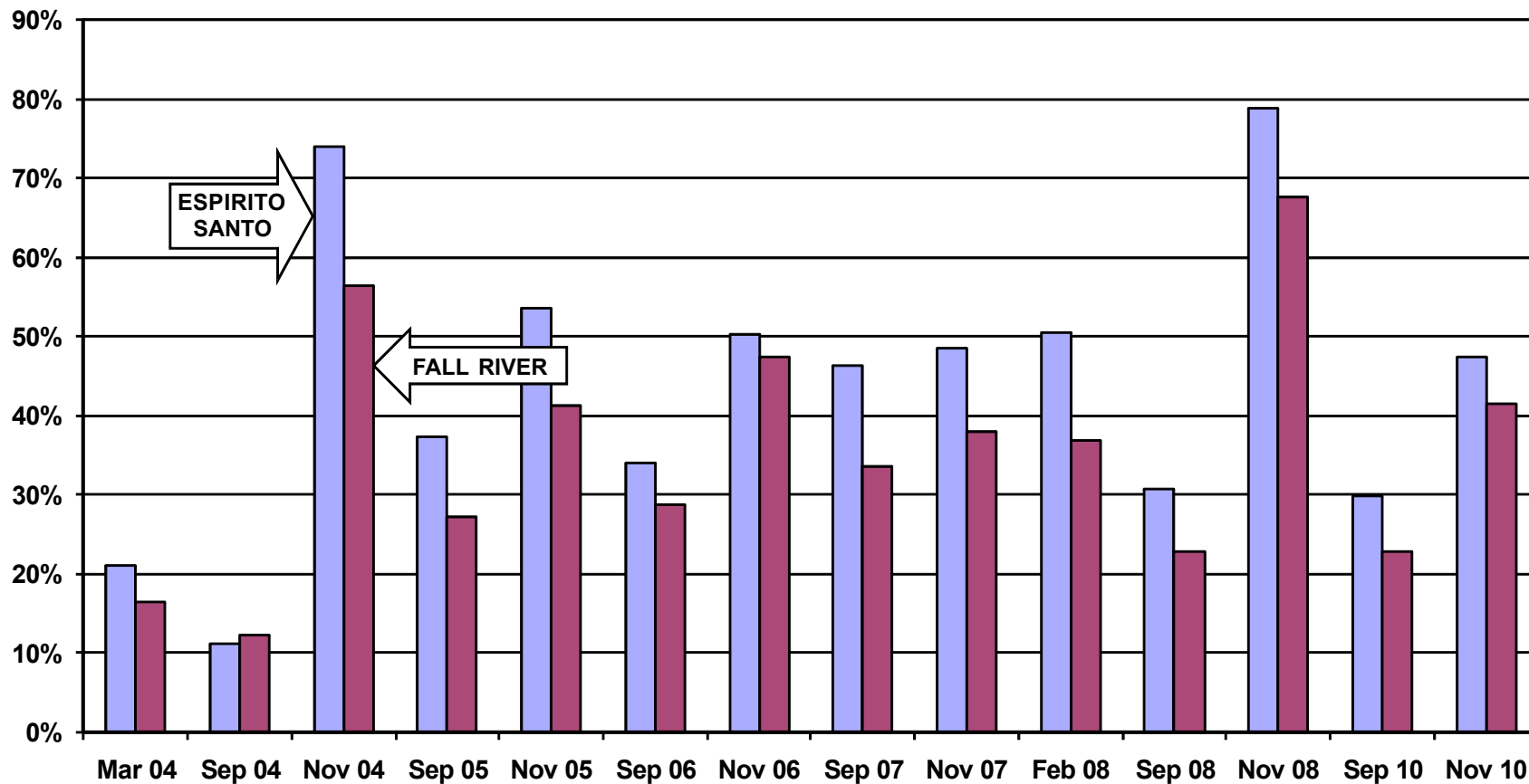
<b>MEMBERS RESIDING IN FALL RIVER</b>	<b>4,363</b>	
<b>MEMBERS REGISTERED TO VOTE IN FALL RIVER</b>	<b>1,894</b>	<b>HEADS OF HOUSEHOLD</b>
	<b>2,185</b>	<b>ALL FAMILY MEMBERS</b>

**VOTING PERFORMANCE OF FALL RIVER RESIDENTS**

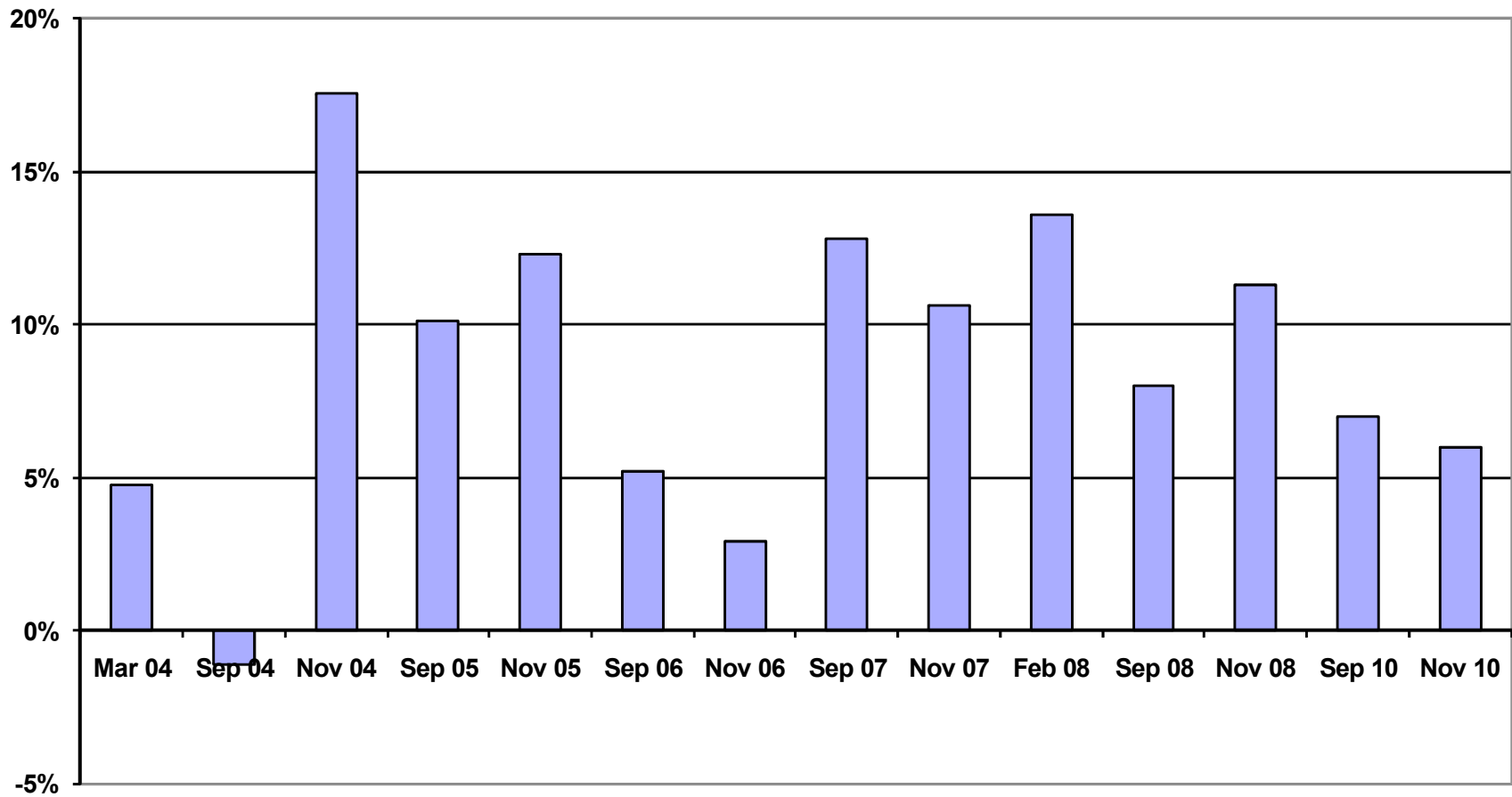
	<b>HEADS OF HOUSEHOLD</b>	<b>AS PERCENT OF ALL REGISTERED MEMBERS ELIGIBLE TO VOTE</b>	<b>CITYWIDE VOTING HISTORY AS PERCENT OF ALL REGISTERED VOTERS)</b>
<b>COMPARABLE STATISTICS</b>			
<b>VOTERS MAR 2004</b>	<b>290</b>	<b>21.1%</b>	<b>16.3%</b>
<b>VOTERS SEP 2004</b>	<b>152</b>	<b>11.0%</b>	<b>12.2%</b>
<b>VOTERS NOV 2004</b>	<b>1018</b>	<b>74.0%</b>	<b>56.4%</b>
<b>VOTERS SEP 2005</b>	<b>585</b>	<b>37.3%</b>	<b>27.1%</b>
<b>VOTERS NOV 2005</b>	<b>839</b>	<b>53.5%</b>	<b>41.2%</b>
<b>VOTERS SEP 2006</b>	<b>633</b>	<b>34.0%</b>	<b>28.8%</b>
<b>VOTERS NOV 2006</b>	<b>958</b>	<b>50.2%</b>	<b>47.3%</b>
<b>VOTERS SEP 2007</b>	<b>872</b>	<b>46.2%</b>	<b>33.4%</b>
<b>VOTERS NOV 2007</b>	<b>914</b>	<b>48.5%</b>	<b>37.9%</b>
<b>VOTERS FEB 2008</b>	<b>954</b>	<b>50.4%</b>	<b>36.8%</b>

<b>VOTERS SEP 2008</b>	<b>582</b>	<b>30.7%</b>	<b>22.7%</b>
<b>VOTERS NOV 2008</b>	<b>1493</b>	<b>78.8%</b>	<b>67.5%</b>
<b>VOTERS SEP 2010</b>	<b>565</b>	<b>29.8%</b>	<b>22.7%</b>
<b>VOTERS NOV 2010</b>	<b>897</b>	<b>47.4%</b>	<b>41.4%</b>

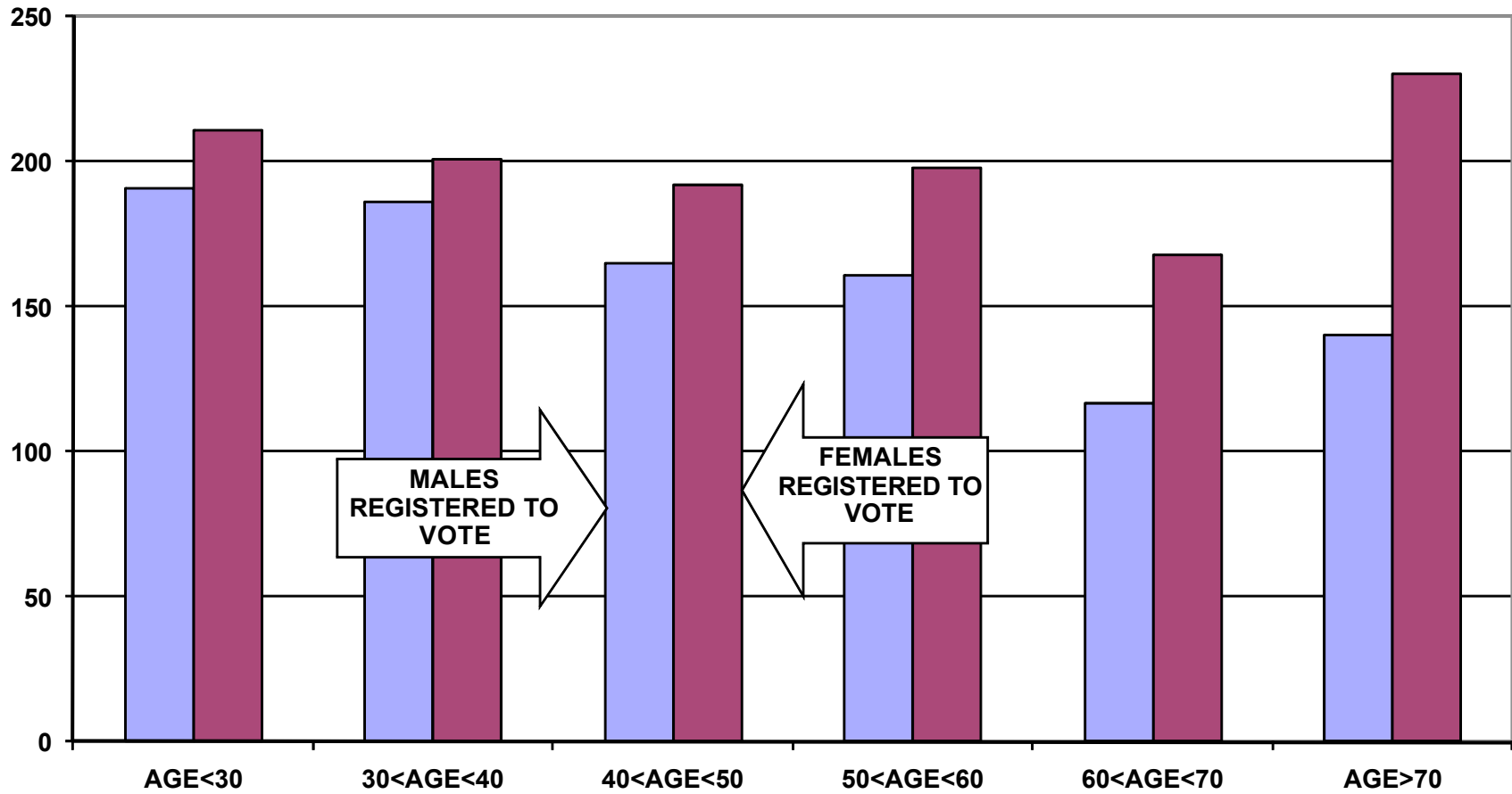
## REGISTERED VOTER TURNOUT COMPARISON BETWEEN FALL RIVER AND ESPIRITO SANTO HEADS OF HOUSEHOLD



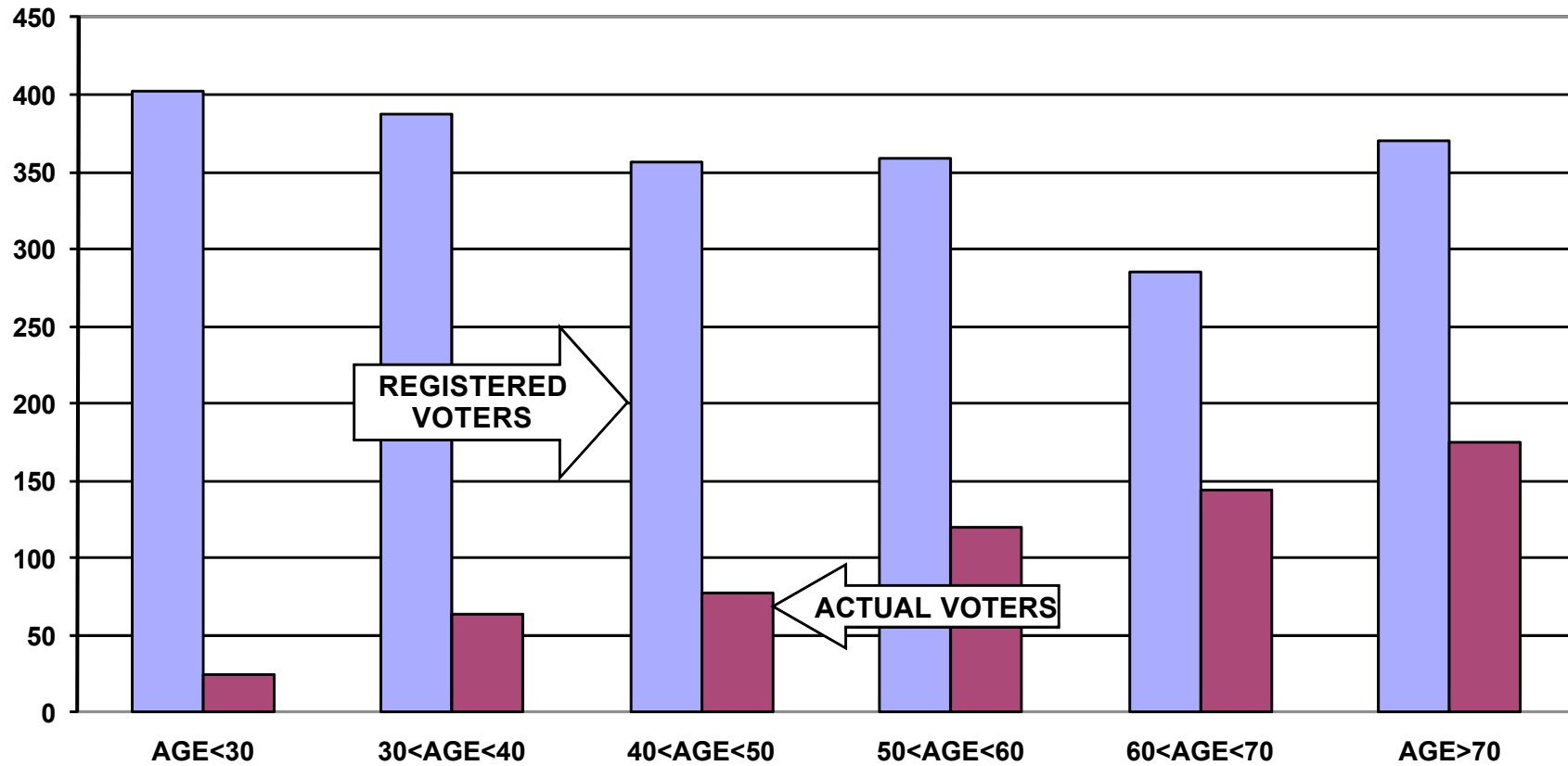
### DIFFERENCE IN VOTER TURNOUT BETWEEN ESPIRITO SANTO VOTERS AND FALL RIVER VOTERS HEADS OF HOUSEHOLD



### VOTER REGISTRATION BY AGE AND GENDER ESPIRITO SANTO ALL HOUSEHOLD MEMBERS



## REGISTERED VOTERS VERSUS ACTUAL VOTERS SEPTEMBER 2010 ESPIRITO SANTO ALL HOUSEHOLD MEMBERS



**REGISTERED VOTERS VERSUS ACTUAL VOTERS NOVEMBER 2010  
ESPIRITO SANTO  
ALL HOUSEHOLD MEMBERS**

