

THE PORTUGUESE AMERICAN CITIZENSHIP PROJECT
A NON-PARTISAN INITIATIVE TO PROMOTE CITIZENSHIP AND CIVIC INVOLVEMENT



OUR LADY OF FATIMA CHURCH
HARTFORD, CT

EVALUATION
OF
THE 2008 ELECTIONS

July 29, 2009

SUPPORTED BY THE
LUSO-AMERICAN
FOUNDATION

REPORT CONTENTS

- **STATISTICS AND SUMMARY OF WORK** 3
- **RESULTS** 4
- **RECOMMENDATIONS** 7
- **APPENDIX** 8

KEY STATISTICS

- **Number of Members: 2,776**
- **Heads of Household registered to vote in city of Hartford: 964 (35% of all members)**
- **All Household Members registered to vote in Hartford: 1342**
- **Heads of Household voter turnout* in February 2008 – 21% (city-wide turnout 33%)**
- **Heads of Household voter turnout in November 2008 – 67% (city-wide turnout 74%)**

SUMMARY OF WORK

Our Lady of Fatima has been an active participant in the Portuguese American Citizenship Project since late 2002.

For the 2008 November elections, postcards in Portuguese and English were sent to every registered voter in the organization reminding them of the date and polling hours for each election.

* Voter turnout is the number of citizens voting in an election divided by the total number of citizens registered to vote. Voter turnout for each election is based on Connecticut residents only.

RESULTS

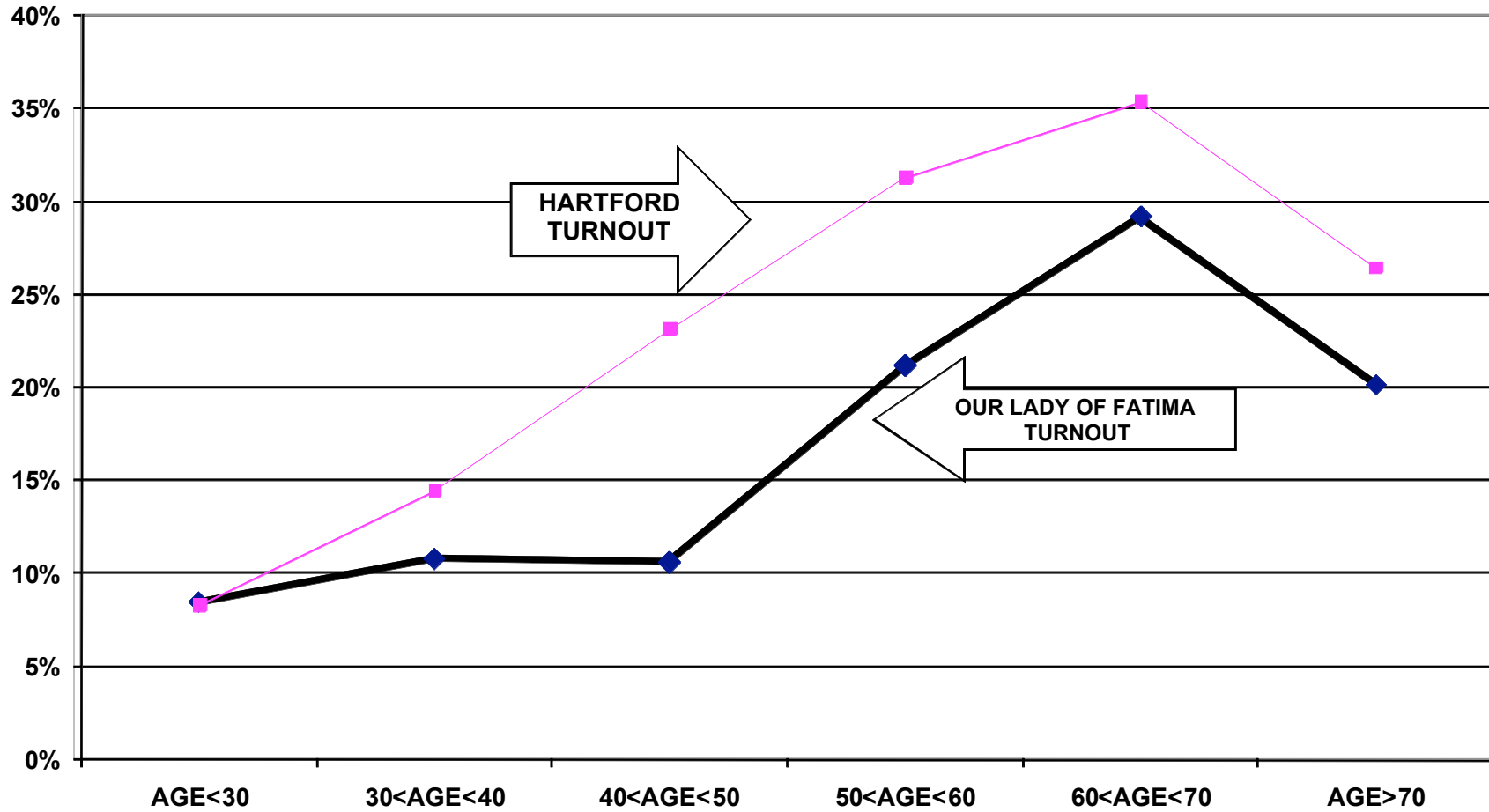
The Church's heads of household voter turnout for the 2008 elections was lower than the citywide turnout. Heads of household turnout for the February Presidential Primary elections was 21%, as compared to the countywide turnout of 33%. The Church's heads of household turnout for the November Presidential election was 67%, as compared to the countywide turnout of 74%.

Voter turnout for all family members is not uniform across age groups. Voters under 30 years of age and even those between 30 and 40 years old had lower turnout rates than the older voters. This is true for the registered voters in the parish and true for the registered voters in the community at large.

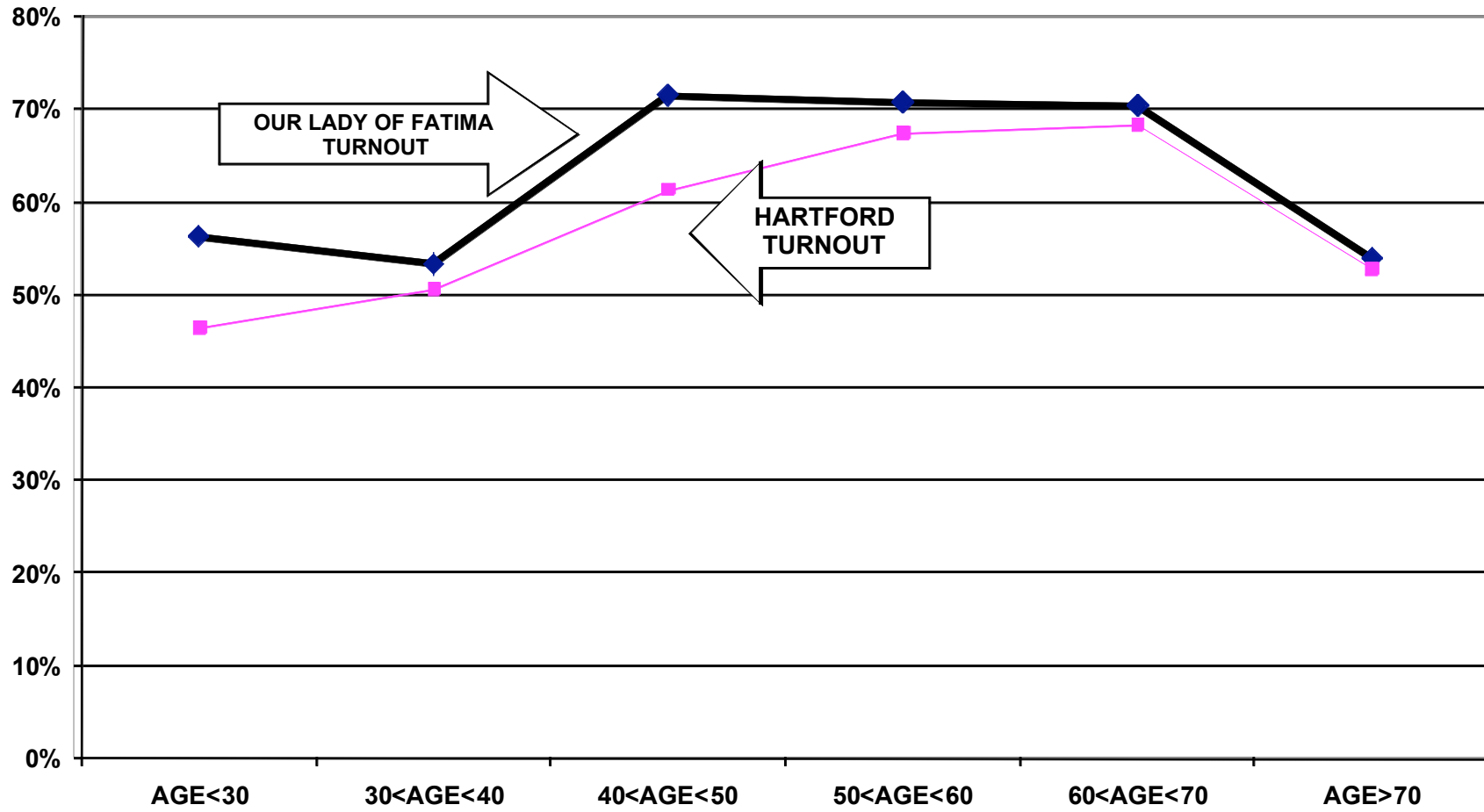
For example, registered voters associated with the parish under 30 years old had a 8% turnout rate in the February elections, while voters between 60 and 70 years old had a 29% turnout rate. Voters associated with the parish under 30 years old had a 56% turnout rate in the November Presidential elections, while voters between 60 and 70 years old had a 70% turnout rate.

The following graphs for the February and November 2008 elections illustrate the relationship between turnout rates and age. These graphs refer to all family members associated with the parish, not just heads of household.

TURNOUT BY AGE FEBRUARY 2008 OUR LADY OF FATIMA ALL HOUSEHOLD MEMBERS



TURNOUT BY AGE NOVEMBER 2008 OUR LADY OF FATIMA ALL HOUSEHOLD MEMBERS



RECOMMENDATIONS

- Our Lady of Fatima must determine if and how it will provide funding for the costs of participation in the Citizenship Project. The Luso American Foundation has completed 10 years of financial support for the Project but will terminate this support for 2009 and beyond. In 2009, the Project will continue to provide data processing and assist in the preparation of voter cards.
- If the Church cannot provide the financial support for mailing and/or cannot accomplish the logistics of printing and mailing the voter cards, interested members of the community should examine the accomplishments of the past ten years and determine how to build on these achievements using alternative methods of promoting civic participation.

APPENDIX

- Historical Data 9
- Registered Voter Turnout Graph 10
- Difference in Voter Turnout Graph 11
- Registered Voters vs. Actual Voters February 2008 Graph 12
- Registered Voters vs. Actual Voters November 2008 Graph 13

HISTORICAL DATA: OUR LADY OF FATIMA CHURCH

REGISTRATION - VOTING

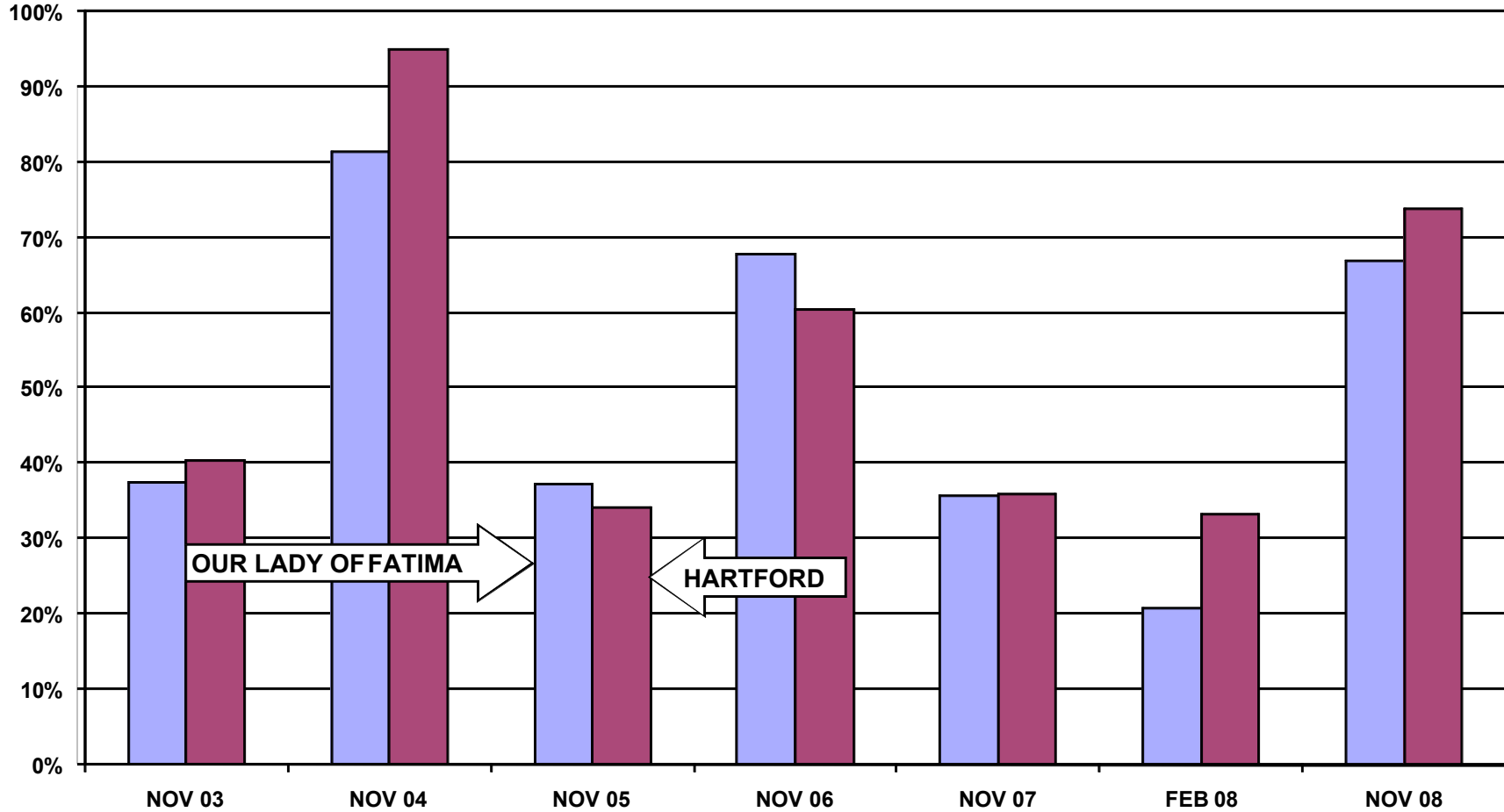
MEMBERS	2,776	
MEMBERS REGISTERED TO VOTE IN CITY OF HARTFORD AREA	964	HEADS OF HOUSEHOLD
	1342	ALL FAMILY MEMBERS

VOTING PERFORMANCE OF HARTFORD RESIDENTS

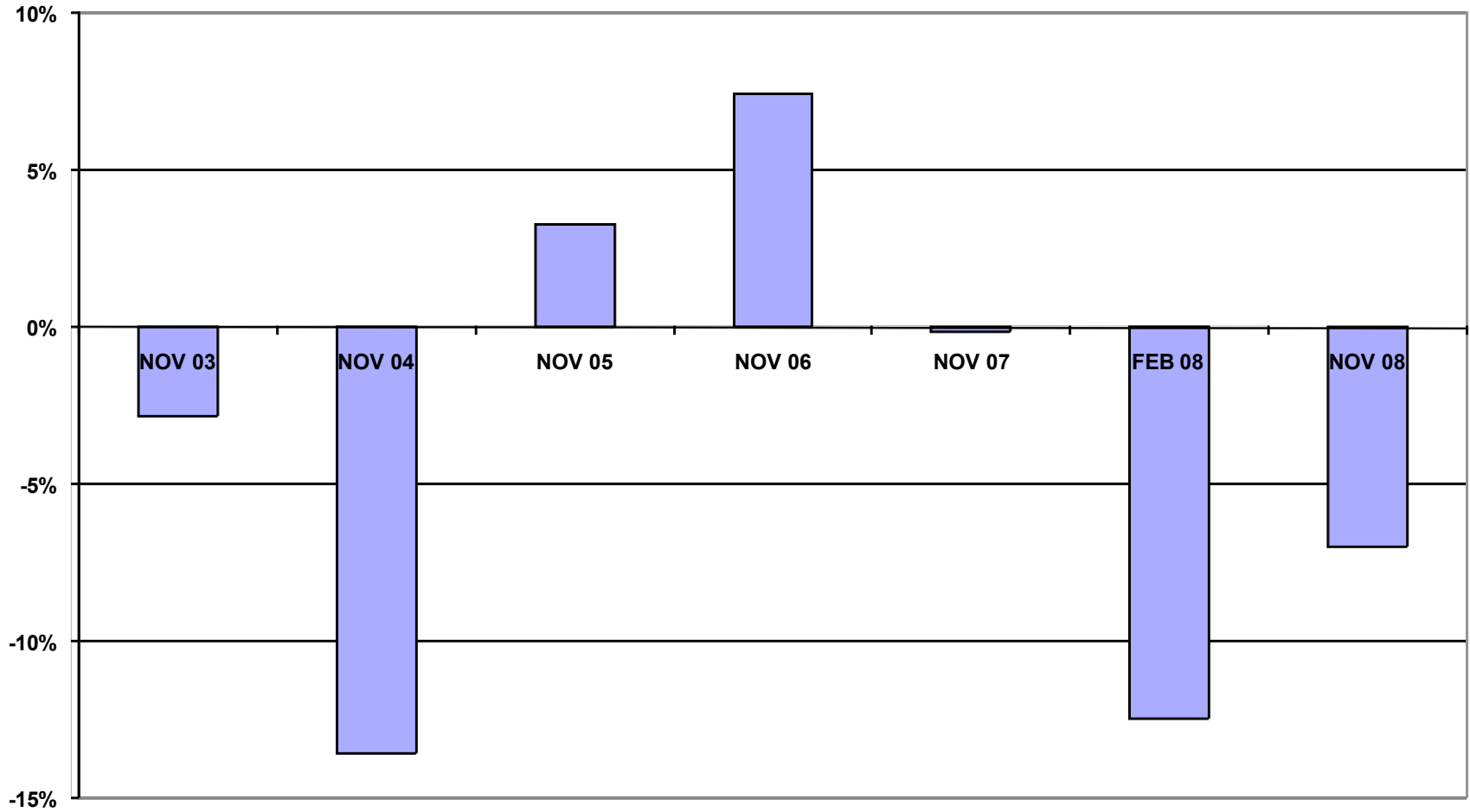
	HEADS OF HOUSEHOLD	AS PERCENT OF ALL REGISTERED MEMBERS ELIGIBLE TO VOTE	CITY WIDE VOTING HISTORY AS PERCENT OF ALL REGISTERED VOTERS
		COMPARABLE STATISTICS	
VOTERS NOV 2003	200	37.4%	40.2%
VOTERS NOV 2004	481	81.4%	95.0%
VOTERS NOV 2005	225	37.3%	34.0%
VOTERS NOV 2006	425	67.7%	60.3%
VOTERS NOV 2007	229	35.6%	35.8%
VOTERS FEB 2008	200	20.7%	33.2%
VOTERS NOV 2008	644	66.8%	73.8%

Note: Voting statistics for November 2008 are based on registration statistics from May 2009

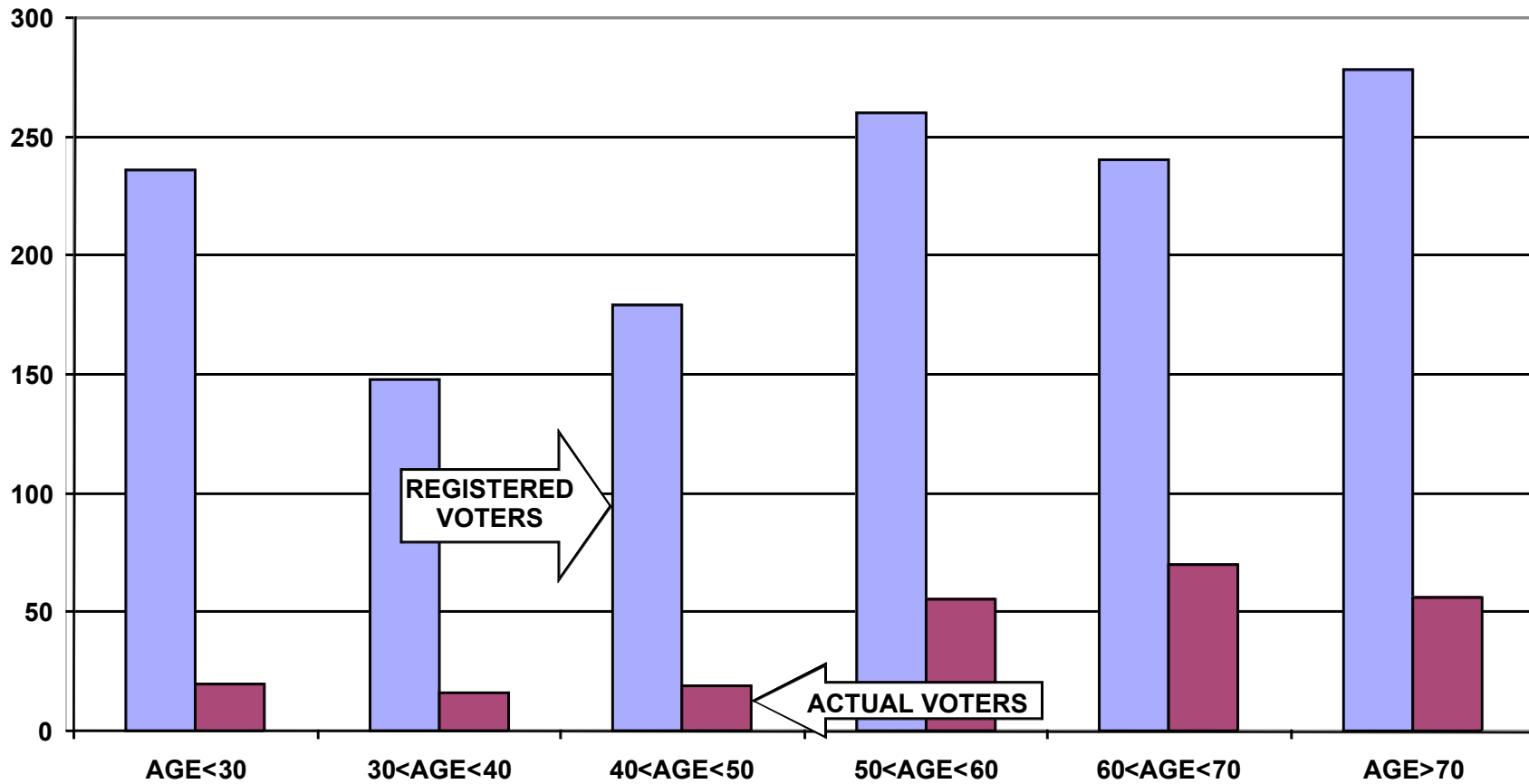
REGISTERED VOTER TURNOUT COMPARISON OF CITY OF HARTFORD AND OUR LADY OF FATIMA HEADS OF HOUSEHOLD



DIFFERENCE IN VOTER TURNOUT BETWEEN OUR LADY OF FATIMA HEADS OF HOUSEHOLD AND CITY OF HARTFORD VOTERS



**REGISTERED VOTERS VERSUS ACTUAL VOTERS FEBRUARY 2008
 OUR LADY OF FATIMA VOTER IN CITY OF HARTFORD
 ALL HOUSEHOLD MEMBERS**



**REGISTERED VOTERS VERSUS ACTUAL VOTERS NOVEMBER 2008
OUR LADY OF FATIMA VOTER IN CITY OF HARTFORD
ALL HOUSEHOLD MEMBERS**

