

THE PORTUGUESE AMERICAN CITIZENSHIP PROJECT
A NON-PARTISAN INITIATIVE TO PROMOTE CITIZENSHIP AND CIVIC INVOLVEMENT



PORTUGUESE AMERICAN CITIZEN FORUM
TULARE, CA.

EVALUATION
OF
THE 2006 ELECTIONS

January 21, 2008

SUPPORTED BY THE
LUSO-AMERICAN
FOUNDATION

REPORT CONTENTS

- **STATISTICS AND SUMMARY OF WORK** 3
- **RESULTS** 4
- **RECOMMENDATIONS** 7
- **APPENDIX** 8

KEY STATISTICS

- **Number of Portuguese Americans registered voters: 2,217 (citywide registration 19,409)**
- **Voter turnout in June 2006 – 50% (citywide turnout 44%)**
- **Voter turnout in November 2006 – 67% (citywide turnout 62%)**

SUMMARY OF WORK

Tulare began its participation in the Portuguese American Citizenship Project during the winter of 2007.

A committee has been put together from leaders of the various Portuguese American organizations in the county and initial plans are being drafted for conducting get-out-the-vote campaigns in June and November 2008.

RESULTS

The Portuguese American voter turnout for the 2000 through 2006 elections was marginally higher than citywide turnout. On average the Portuguese American voter turnout was approximately 3% higher than the voter turnout of all Tulare city residents.

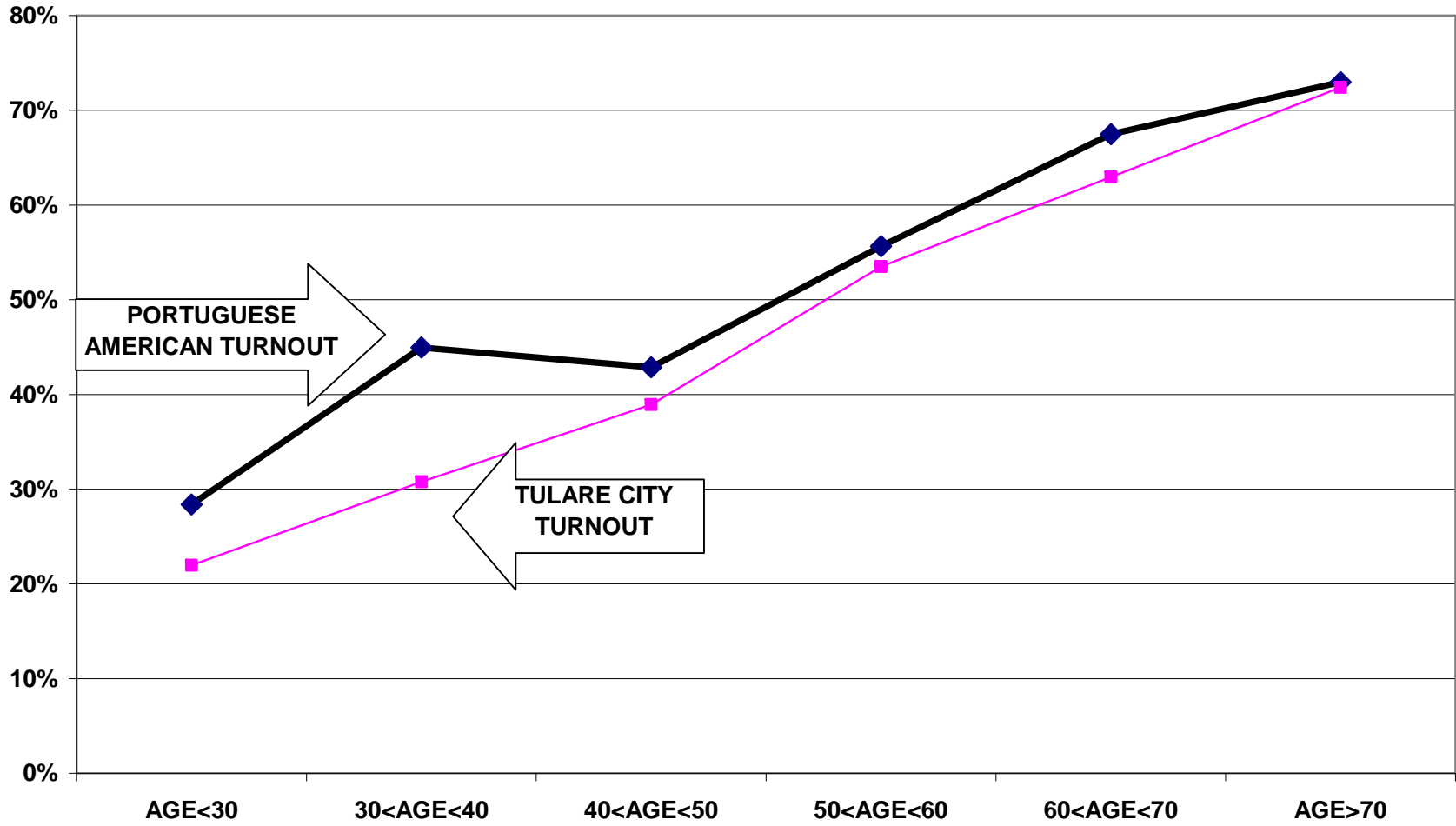
Voter turnout is not uniform across age groups. Voters under 30 years of age had lower turnout rates than the older voters. This is true for the registered voters among Portuguese Americans and true for the registered voters in the community at large.

For example, Portuguese American voters under 30 years old have a 28% turnout rate in the June 2006 election while Portuguese American voters between 60 and 70 years old had a 67% turnout rate. For the November 2006 election, those same voters under 30 years old had a 35% turnout rate, compared to an 87% turnout rate for Portuguese American voters between 60 and 70 years old.

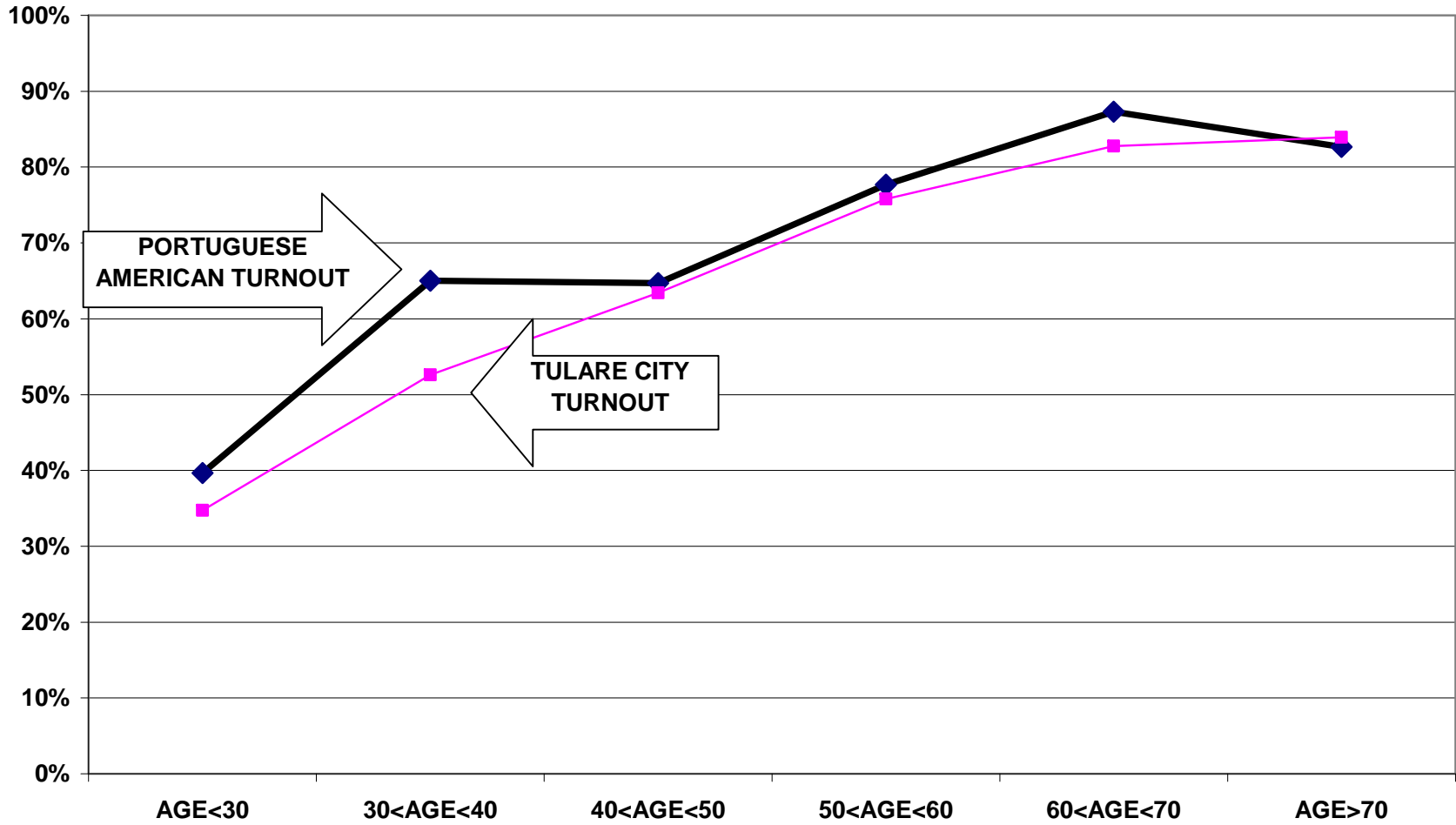
It should be noted the significant difference in voter turnout among Portuguese Americans between the ages of 30 and 40 and the city turnout for both the June and the November 2006 elections. Portuguese American voters between 30 and 40 years old had a 14% higher turnout rate than Tulare residents for the June 2006 election. For the November 2006 election Portuguese American voters had a 13% higher turnout than Tulare residents. No other age group demonstrated this degree of separation from the city average.

The following graphs for the September and November elections illustrate the relationship between turnout rates and age.

TURNOUT BY AGE JUNE 2006 TULARE CITY AND PORTUGUESE AMERICANS



TURNOUT BY AGE NOVEMBER 2006 TULARE CITY AND PORTUGUESE AMERICANS



RECOMMENDATIONS

- The Portuguese American Citizen Forum should examine ways to increase its overall voter turnout rate. Although the Portuguese Americans have generally outvoted the city overall, it has only been by a marginal amount. Also, among the Portuguese American residents of Tulare, older voters consistently outvote younger voters. This issue should be addressed so as to increase voting turnout for the younger age groups.
- In order to encourage increased voter registrations and establish a collective commitment to strong voter turnout, the Portuguese American Citizen Forum should consider sending letters to every group family reminding them of the group's involvement in the Citizenship Project and encouraging voter registration for family members who are citizens but have not yet registered to vote.

APPENDIX

- Historical Data 9
- Registered Voter Turnout Bar Graph 10
- Difference in Voter Turnout Bar Graph 11
- Registered Voters versus Actual Voters September 2006 12
- Registered Voters versus Actual Voters November 2006 13

**HISTORICAL DATA: PORTUGUESE AMERICAN CITIZEN FORUM
REGISTRATION - VOTING**

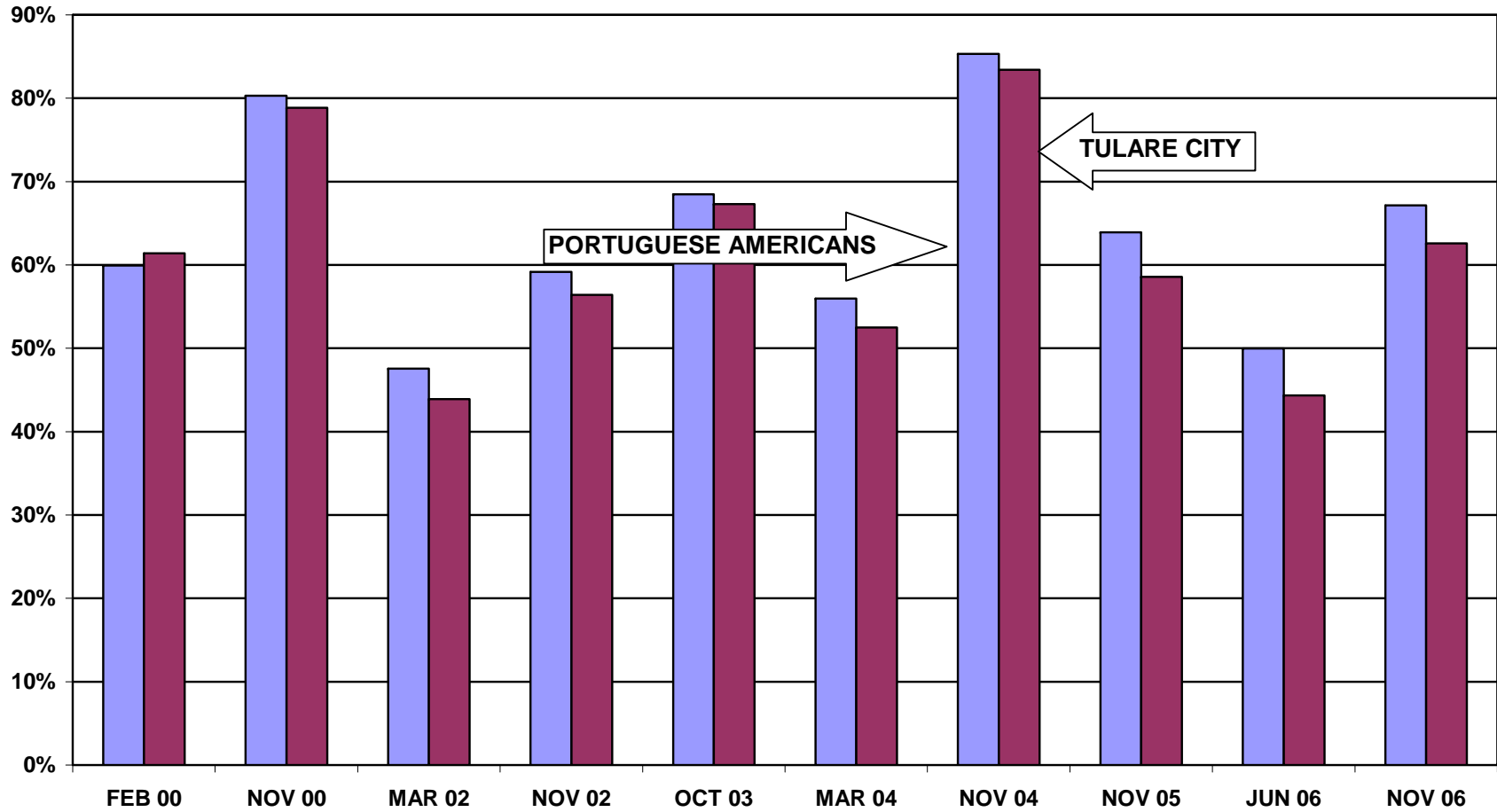
**PORTUGUESE AMERICANS REGISTERED
TO VOTE IN THE CITY OF TULARE 2,217**

ALL REGISTERED VOTERS IN TULARE 19,409

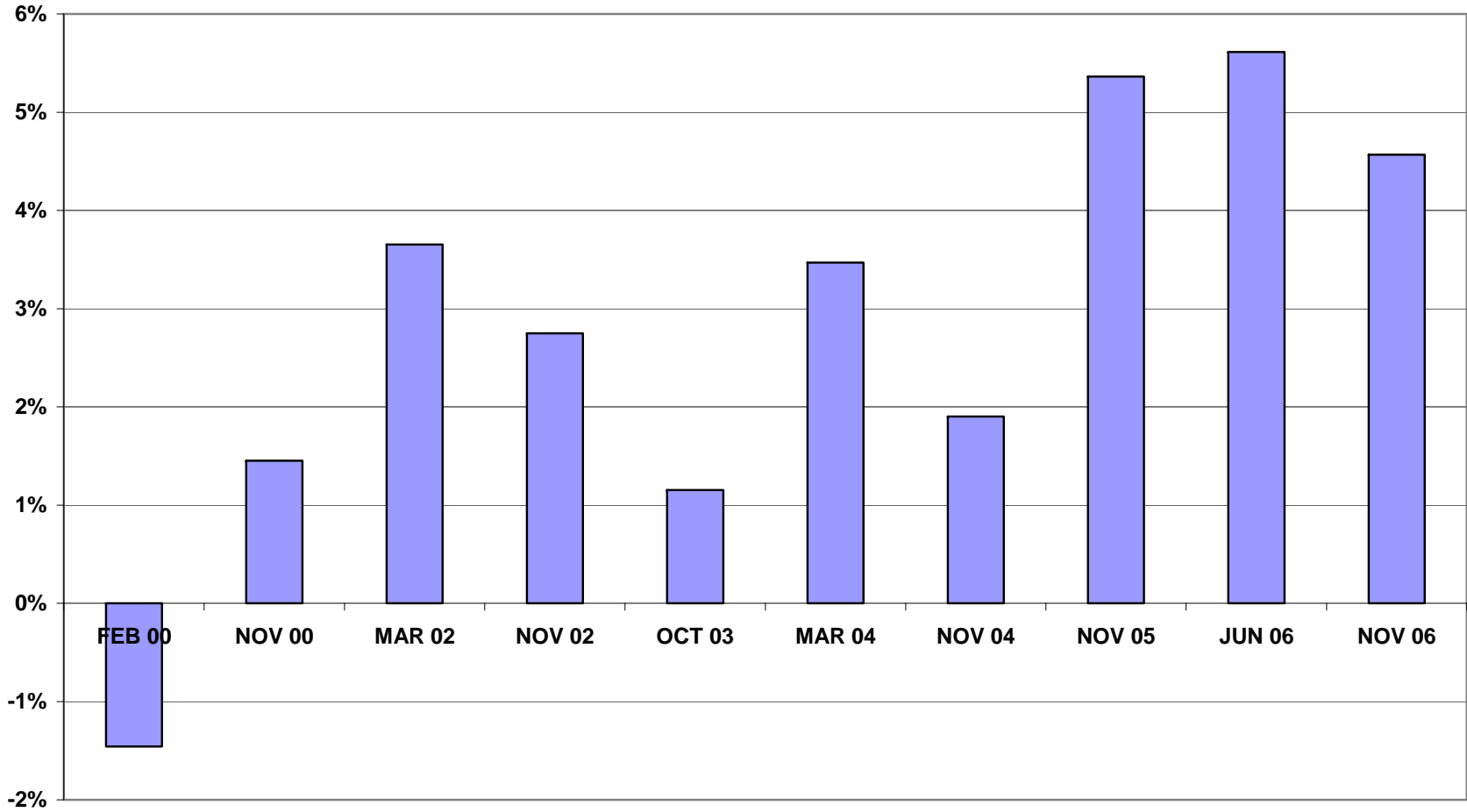
VOTING PERFORMANCE OF TULARE RESIDENTS

	PORTUGUESE AMERICANS	AS PERCENT OF ALL REGISTERED MEMBERS ELIGIBLE TO VOTE	CITYWIDE VOTING HISTORY AS PERCENT OF ALL REGISTERED VOTERS
		COMPARABLE STATISTICS	
VOTERS FEB 2000	925	59.9%	61.4%
VOTERS NOV 2000	1304	80.3%	78.8%
VOTERS MAR 2002	812	47.6%	43.9%
VOTERS NOV 2002	1036	59.2%	56.4%
VOTERS OCT 2003	1233	68.5%	67.3%
VOTERS MAR 2004	1034	56.0%	52.5%
VOTERS NOV 2004	1677	85.3%	83.4%
VOTERS NOV 2005	1338	63.9%	58.6%
VOTERS JUN 2006	1074	50.0%	44.4%
VOTERS NOV 2006	1458	67.2%	62.6%

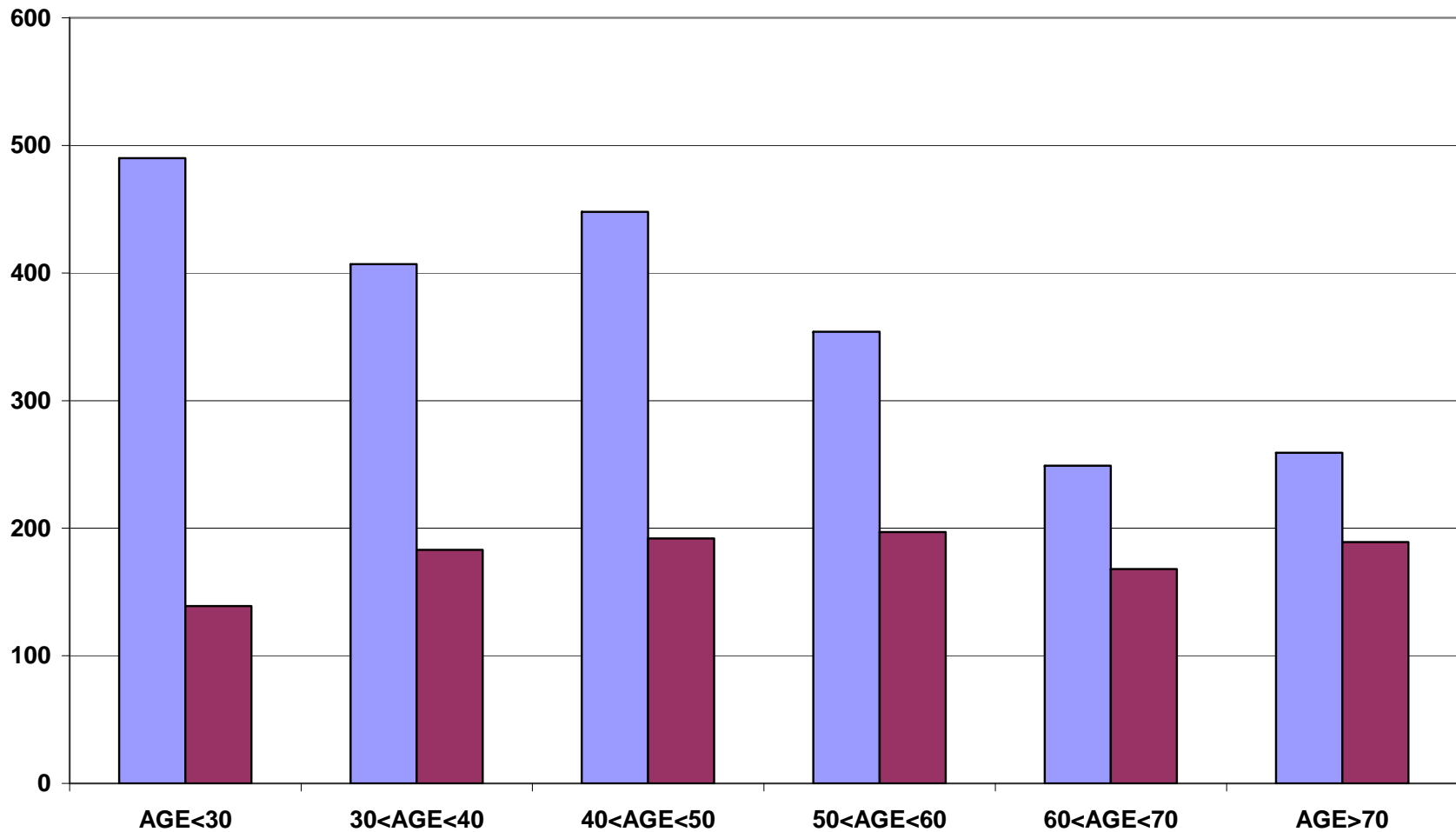
REGISTERED VOTER TURNOUT COMPARISON OF TULARE CITY AND PORTUGUESE AMERICANS



**DIFFERENCE IN VOTER TURNOUT BETWEEN
TULARE CITY VOTERS
AND PORTUGUESE AMERICAN VOTERS**



Registered Voters Versus Actual Voters June 2006 Portuguese Americans of Tulare, CA



Registered Voters Versus Actual Voters November 2006 Portuguese Americans of Tulare, CA

