

**THE PORTUGUESE AMERICAN CITIZENSHIP PROJECT**  
**A NON-PARTISAN INITIATIVE TO PROMOTE CITIZENSHIP AND CIVIC INVOLVEMENT**

**THE PORTUGUESE ORGANIZATION  
FOR SOCIAL SERVICES AND OPPORTUNITIES  
SAN JOSE, CALIFORNIA**



**EVALUATION OF THE 2008 ELECTIONS**

**March 25, 2010**

**SUPPORTED BY THE**  
**LUSO-AMERICAN**  
**FOUNDATION**

# REPORT CONTENTS

<input type="checkbox"/> <b>STATISTICS AND SUMMARY OF WORK</b>	<b>3</b>
<input type="checkbox"/> <b>RESULTS</b>	<b>4</b>
<input type="checkbox"/> <b>RECOMMENDATIONS</b>	<b>8</b>
<input type="checkbox"/> <b>APPENDIX</b>	<b>9</b>

## KEY STATISTICS

- ☒ **Number of Members: 2,703**
- ☒ **Heads of Household registered to vote: 653 (24% of all members)**
- ☒ **All Household Members registered to vote: 1,393**
- ☒ **Heads of Household voter turnout<sup>1</sup> in February 2008 – 81% (county-wide turnout 90%)**
- ☒ **Heads of Household voter turnout in June 2008 – 75% (county-wide turnout 62%)**
- ☒ **Heads of Household voter turnout in November 2008 – 93% (county-wide turnout 67%)**

## SUMMARY OF WORK

The Portuguese Organization for Social Services and Opportunities (POSSO) has been an active participant in the Portuguese American Citizenship Project since late 2002.

For the 2008 February, June, and November elections, postcards in Portuguese and English were sent to every registered voter in the organization reminding them of the date and polling hours for each election.

---

<sup>1</sup> Voter turnout is the number of citizens voting in an election divided by the total number of citizens registered to vote. Voter turnout for each election is based on Santa Clara county residents only.

## RESULTS

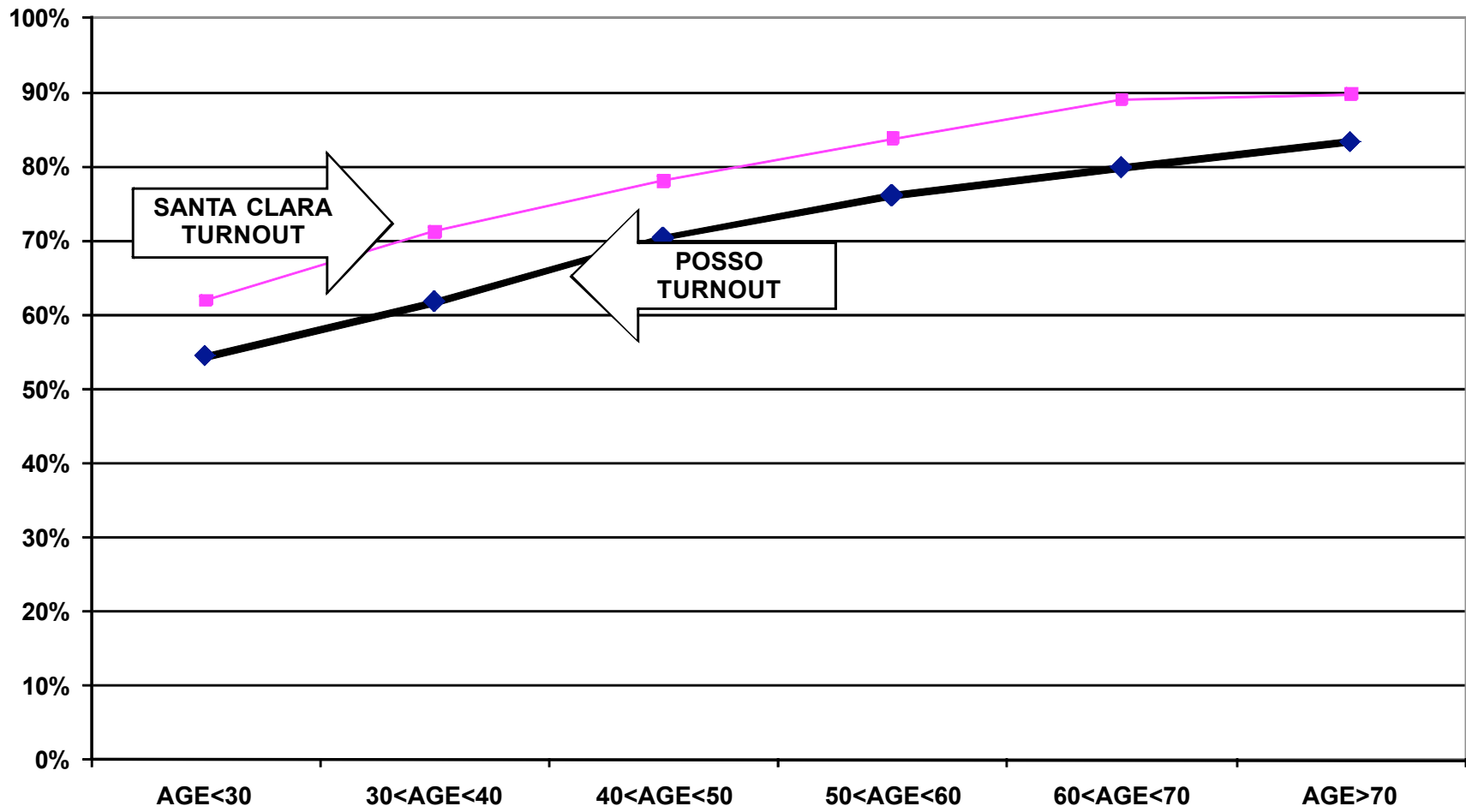
The POSSO heads of household voter turnout for the 2008 elections was on average higher than the countywide turnout. Heads of household turnout for the February Presidential Primary elections was 81%, as compared to the countywide turnout of 90%. For the June Primary elections heads of household turnout was 75%, as compared to the countywide turnout of 62%. POSSO's heads of household turnout for the November Presidential election was 93%, as compared to the countywide turnout of 67%.

Voter turnout for all family members is not uniform across age groups. Voters under 30 years of age and even those between 30 and 40 years old had lower turnout rates than the older voters. This is true for the organization's registered voters and true for the registered voters in the community at large.

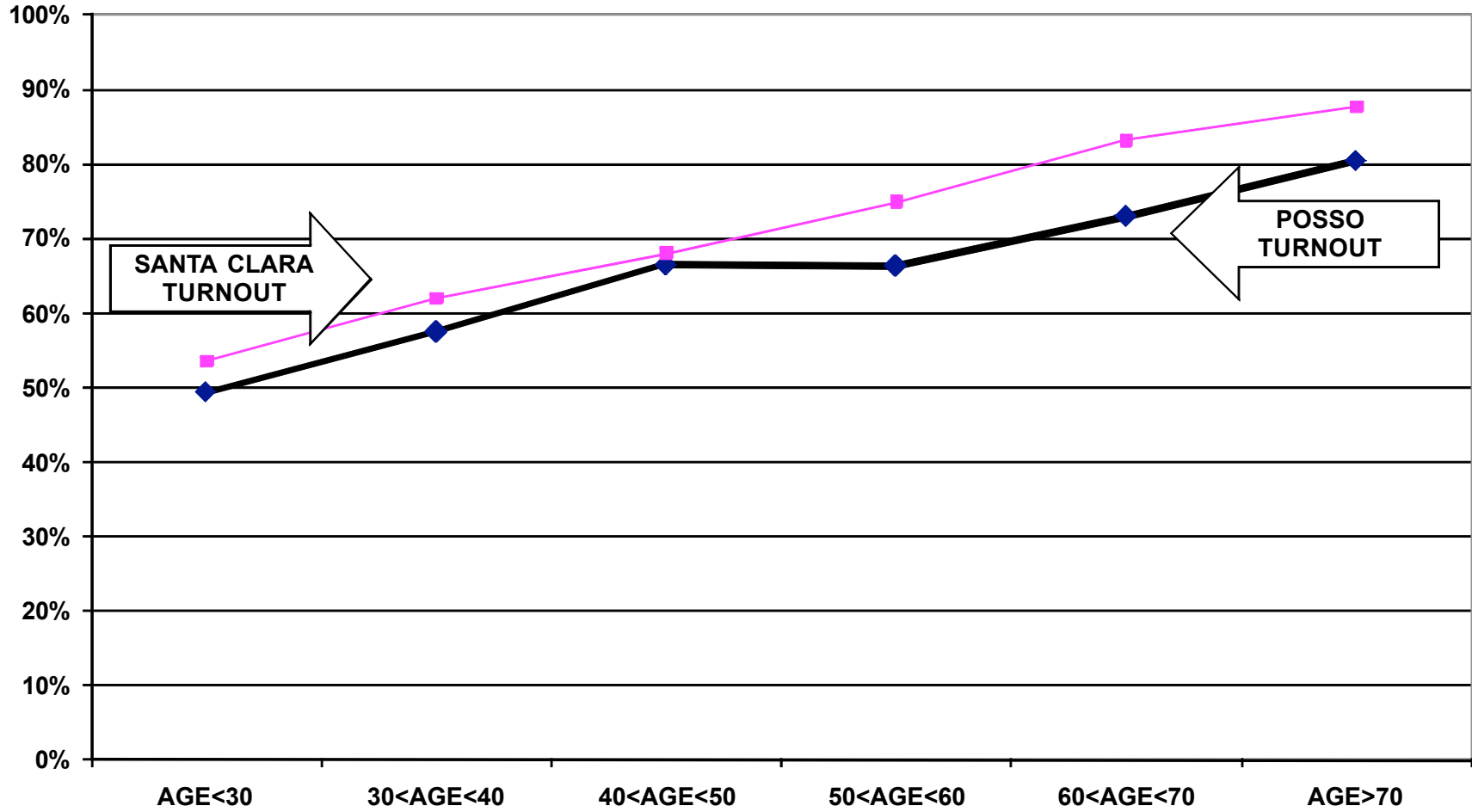
For example, registered voters associated with the organization under 30 years old had a 54% turnout rate in the February elections, while voters between 60 and 70 years old had a 80% turnout rate. For the June elections, the under 30 year old associated voters had a 49% turnout rate compared to a 73% turnout rate for voters between 60 and 70 years old. Voters associated with POSSO under 30 years old had a 83% turnout rate in the November Presidential elections, while voters between 60 and 70 years old had a 94% turnout rate.

The following graphs for the February, June, and November 2008 elections illustrate the relationship between turnout rates and age. These graphs refer to all family members associated with the organization, not just heads of household.

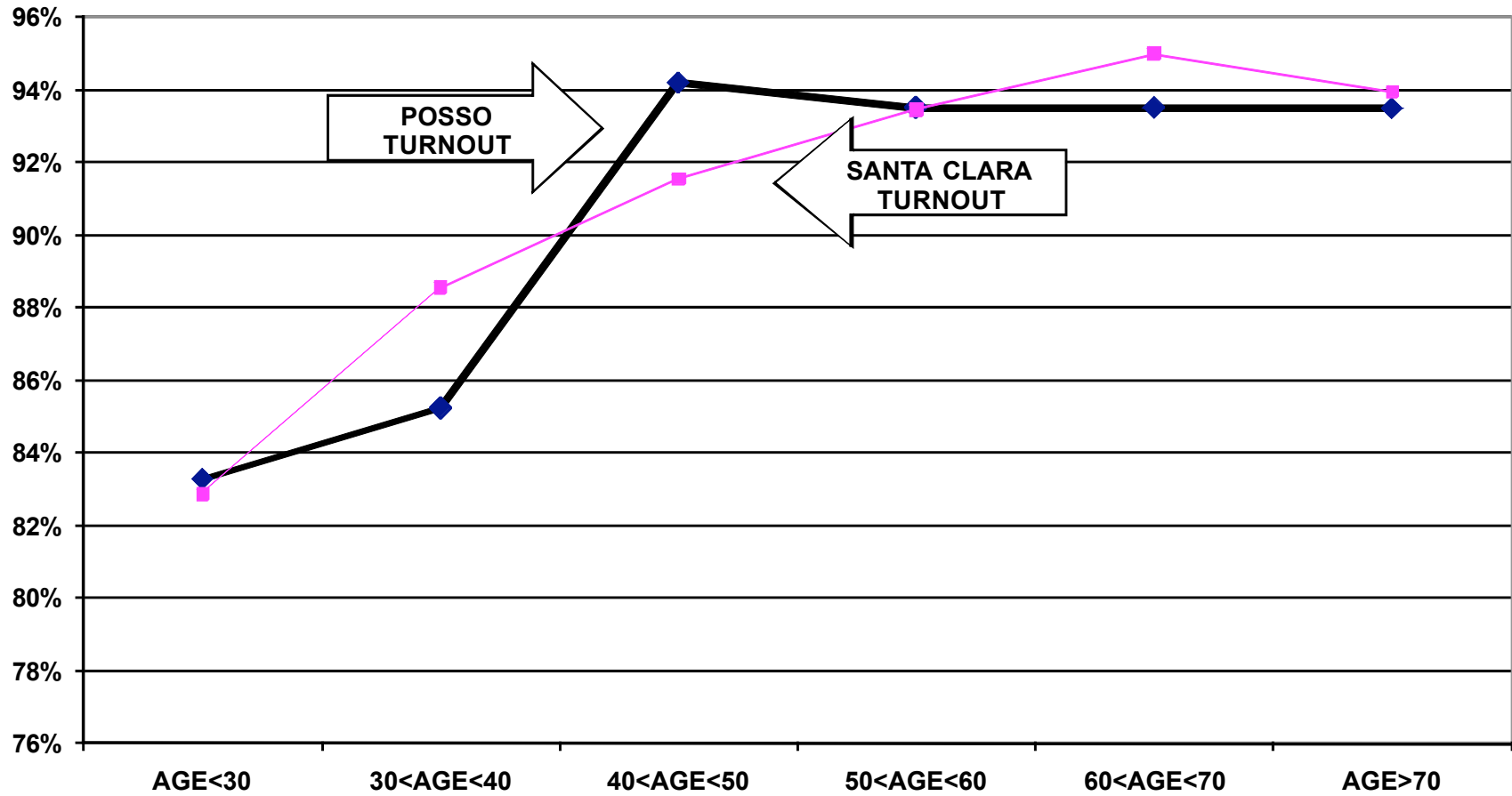
**TURNOUT BY AGE FEBRUARY 2008**  
**THE PORTUGUESE ORGANIZATION FOR SOCIAL SERVICES AND OPPORTUNITIES**  
**ALL HOUSEHOLD MEMBERS**



**TURNOUT BY AGE JUNE 2008**  
**THE PORTUGUESE ORGANIZATION FOR SOCIAL SERVICES AND OPPORTUNITIES**  
**ALL HOUSEHOLD MEMBERS**



**TURNOUT BY AGE NOVEMBER 2008**  
**THE PORTUGUESE ORGANIZATION FOR SOCIAL SERVICES AND OPPORTUNITIES**  
**ALL HOUSEHOLD MEMBERS**



## RECOMMENDATIONS

- ☒ POSSO must determine if and how it will provide funding for the costs of participation in the Citizenship Project. The Luso American Foundation has completed 10 years of financial support for the Project but will terminate this support for 2009 and beyond. In 2009, the Project will continue to provide data processing and assist in the preparation of voter cards. The approximate cost of preparing two elections is \$1,000.
  
- ☒ If POSSO cannot provide the financial support for mailing and/or cannot accomplish the logistics of printing and mailing the voter cards, interested members of the community should examine the accomplishments of the past ten years and determine how to build on these achievements using alternative methods of promoting civic participation.



# APPENDIX

☒ Historical Data	10
☒ Registered Voter Turnout Graph	11
☒ Difference in Voter Turnout Graph	12
☒ Registered Voters vs. Actual Voters February 2008 Graph	13
☒ Registered Voters vs. Actual Voters June 2008 Graph	14
☒ Registered Voters vs. Actual Voters November 2008 Graph	15

**HISTORICAL DATA – POSSO  
REGISTRATION - VOTING**

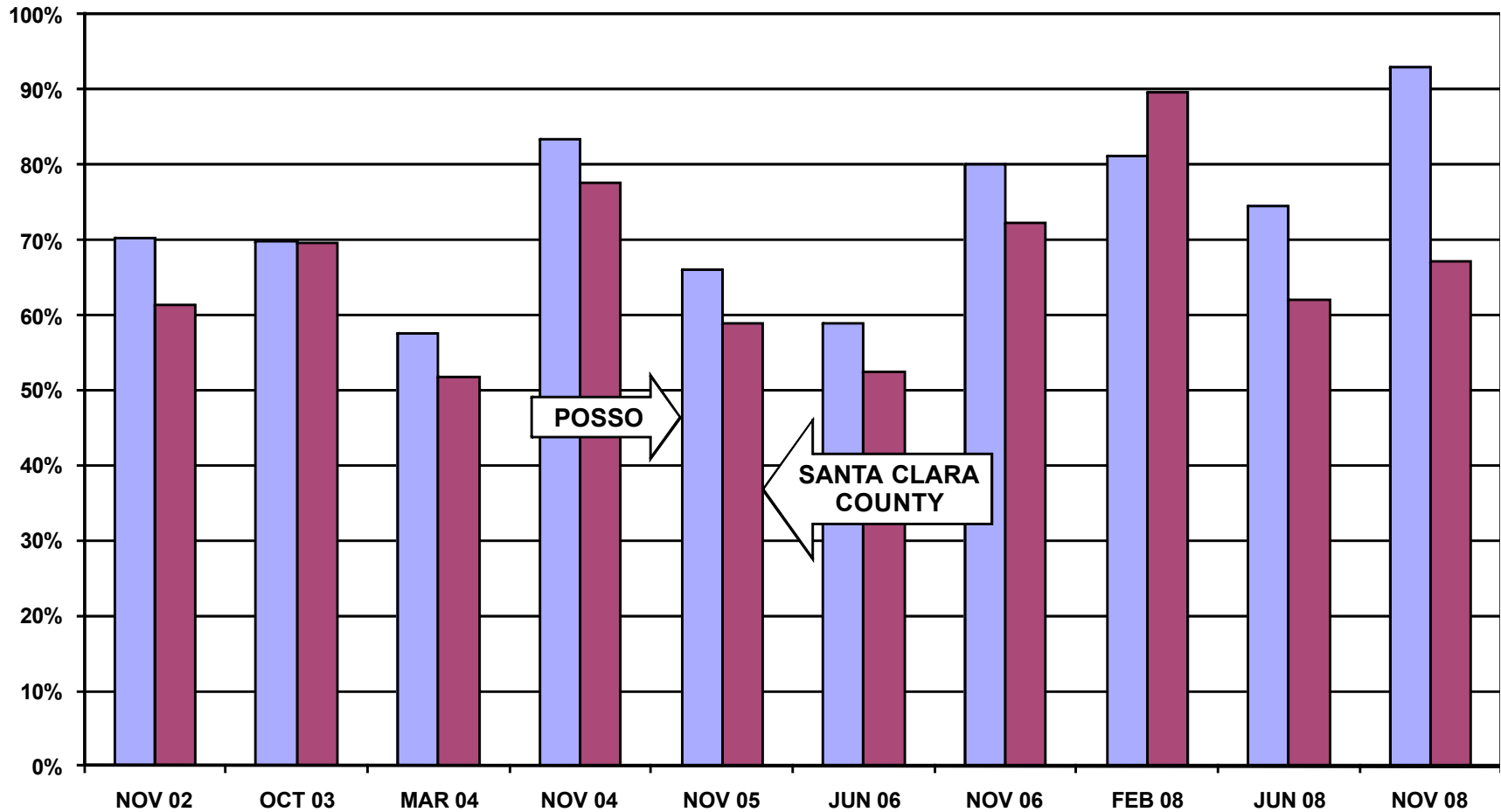
<b>TOTAL MEMBERS</b>	<b>2703</b>
<b>MEMBERS REGISTERED TO VOTE IN COUNTY OF SANTA CLARA</b>	<b>653 HEADS OF HOUSEHOLD</b>
	<b>1233 ALL FAMILY MEMBERS</b>

**VOTING PERFORMANCE OF SANTA CLARA COUNTY RESIDENTS**

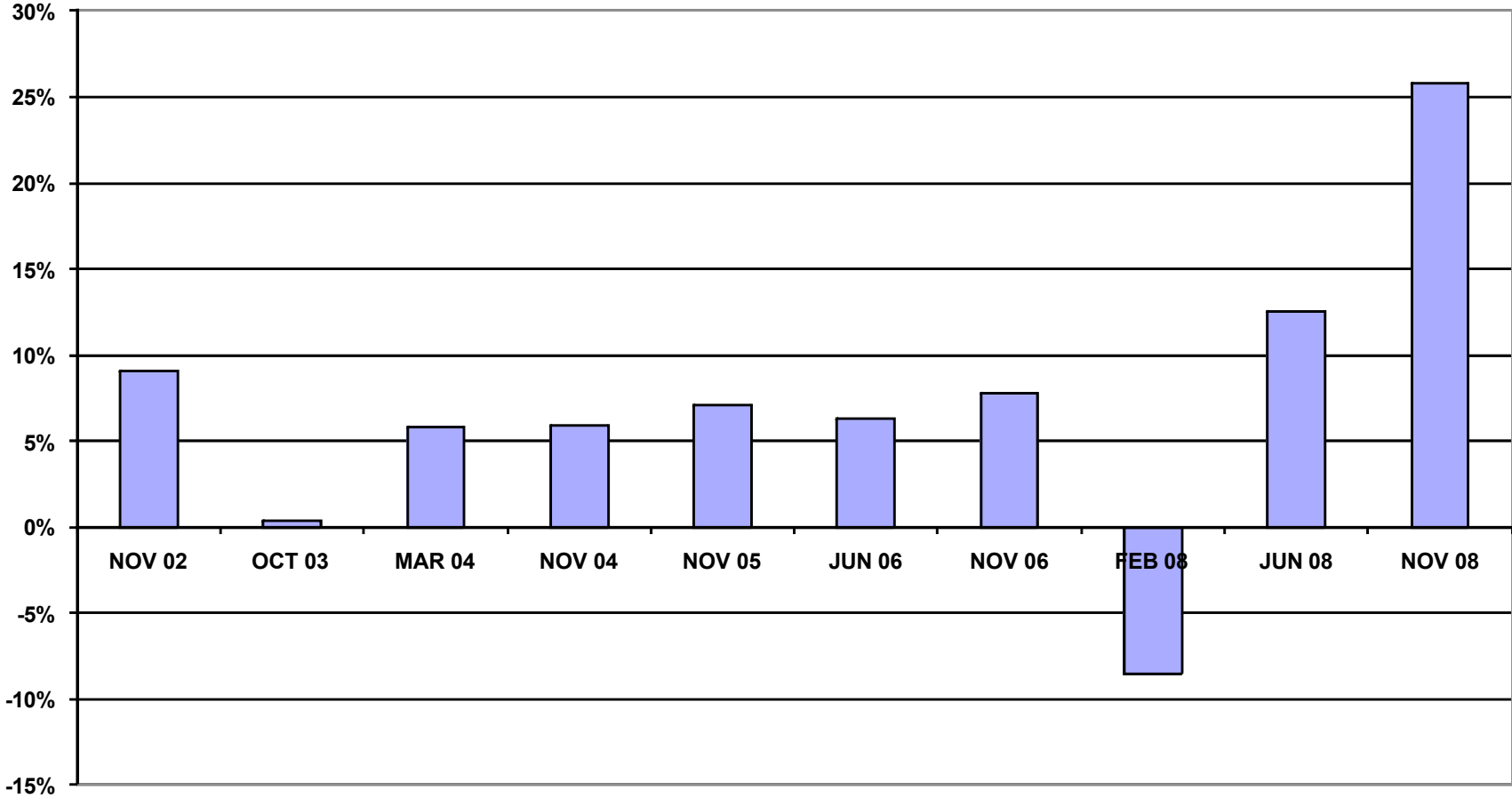
	<b>HEADS OF HOUSEHOLD</b>	<b>AS PERCENT OF ALL REGISTERED MEMBERS ELIGIBLE TO VOTE</b>	<b>COUNTY WIDE VOTING HISTORY AS PERCENT OF ALL REGISTERED VOTERS</b>
		<b>COMPARABLE STATISTICS</b>	
<b>VOTERS NOV 2002</b>	<b>418</b>	<b>70.3%</b>	<b>61.3%</b>
<b>VOTERS OCT 2003</b>	<b>434</b>	<b>69.8%</b>	<b>69.5%</b>
<b>VOTERS MAR 2004</b>	<b>362</b>	<b>57.5%</b>	<b>51.7%</b>
<b>VOTERS NOV 2004</b>	<b>573</b>	<b>83.4%</b>	<b>77.5%</b>
<b>VOTERS NOV 2005</b>	<b>460</b>	<b>66.0%</b>	<b>58.9%</b>
<b>VOTERS JUN 2006</b>	<b>392</b>	<b>58.9%</b>	<b>52.5%</b>
<b>VOTERS NOV 2006</b>	<b>533</b>	<b>80.0%</b>	<b>72.3%</b>
<b>VOTERS FEB 2008</b>	<b>530</b>	<b>81.2%</b>	<b>89.7%</b>
<b>VOTERS JUN 2008</b>	<b>487</b>	<b>74.6%</b>	<b>62.0%</b>
<b>VOTERS NOV 2008</b>	<b>607</b>	<b>93.0%</b>	<b>67.1%</b>

Note: Voting statistics for November 2008 are based on registration statistics from May 2009

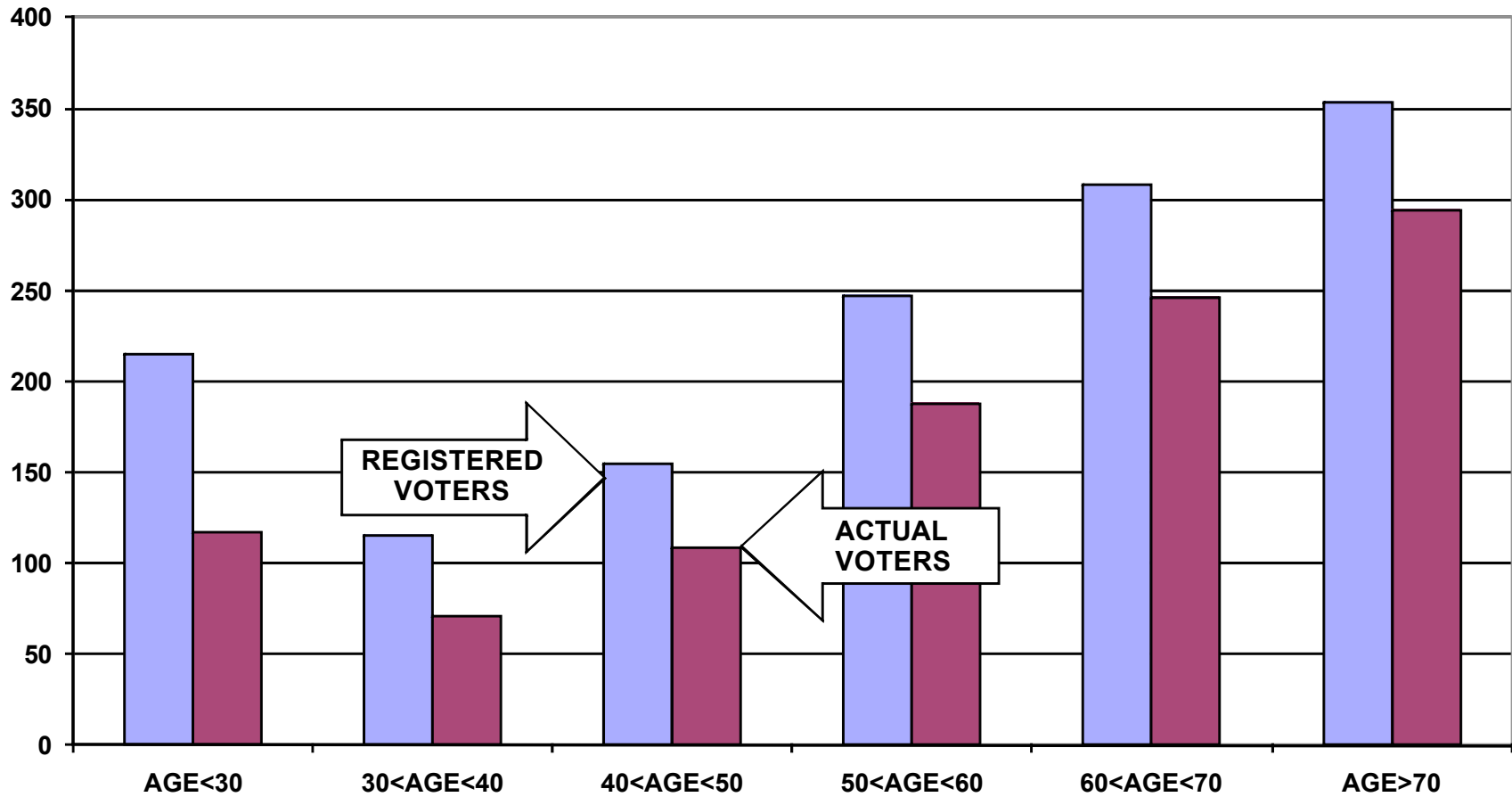
### REGISTERED VOTER TURNOUT COMPARISON OF SANTA CLARA COUNTY AND THE PORTUGUESE ORGANIZATION FOR SOCIAL SERVICES AND OPPORTUNITIES HEADS OF HOUSEHOLD



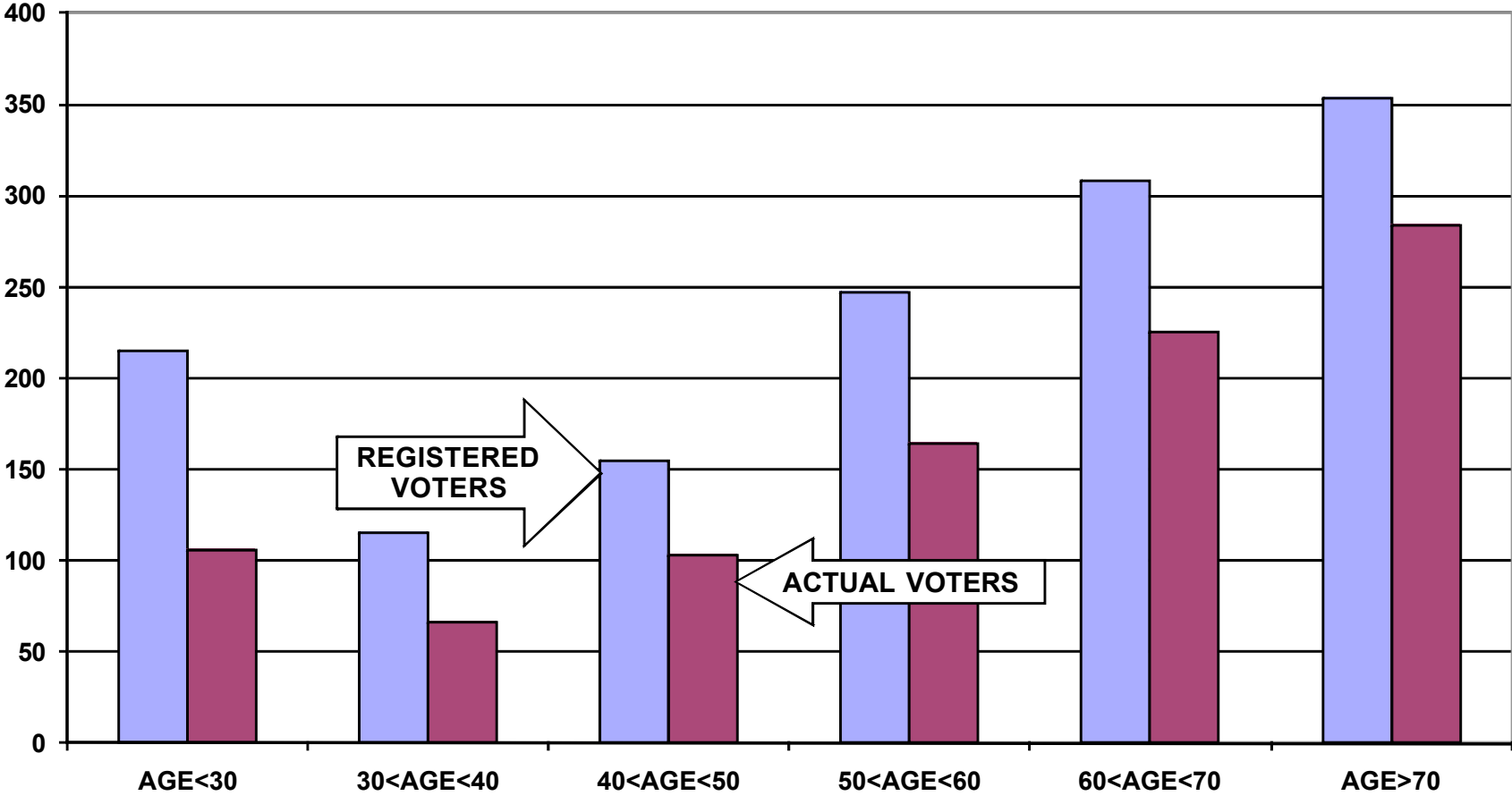
**DIFFERENCE IN VOTER TURNOUT BETWEEN  
THE PORTUGUESE ORGANIZATION FOR SOCIAL SERVICES AND OPPORTUNITIES  
VOTERS AND SANTA CLARA COUNTY VOTERS  
HEADS OF HOUSEHOLD**



**REGISTERED VOTERS VERSUS ACTUAL VOTERS FEBRUARY 2008**  
**THE PORTUGUESE ORGANIZATION FOR SOCIAL SERVICES AND OPPORTUNITIES**  
**ALL HOUSEHOLD MEMBERS**



**REGISTERED VOTERS VERSUS ACTUAL VOTERS JUNE 2008**  
**THE PORTUGUESE ORGANIZATION FOR SOCIAL SERVICES AND OPPORTUNITIES**  
**ALL HOUSEHOLD MEMBERS**



**REGISTERED VOTERS VERSUS ACTUAL VOTERS NOVEMBER 2008**  
**THE PORTUGUESE ORGANIZATION FOR SOCIAL SERVICES AND OPPORTUNITIES**  
**ALL HOUSEHOLD MEMBERS**

