

**THE PORTUGUESE AMERICAN CITIZENSHIP PROJECT**  
A NON-PARTISAN INITIATIVE TO PROMOTE CITIZENSHIP AND CIVIC INVOLVEMENT



**OUR LADY OF MIRACLES PARISH**

**EVALUATION**

**OF**

**THE 2006 ELECTIONS**

**July 18, 2007**

**SUPPORTED BY THE**  
**LUSO-AMERICAN**  
**FOUNDATION**

# REPORT CONTENTS

- **STATISTICS AND SUMMARY OF WORK** 3
- **RESULTS** 4
- **RECOMMENDATIONS** 7
- **APPENDIX** 8

## KEY STATISTICS

- **Total number of parishioners: 1,431**
- **Heads of Household registered to vote in Stanislaus and Merced: 563**
- **All Household Members registered to vote in Stanislaus and Merced: 960**
- **Heads of Household registered to vote in Merced county: 496**
- **All Household Members registered to vote in Merced county: 855**
- **Heads of Household in Merced voter turnout\* in June 2006 – 48% (countywide turnout 26%)**
- **Heads of Household in Merced voter turnout in November 2006 – 75% (countywide turnout 49%)**

## SUMMARY OF WORK

Our Lady of Miracles Parish has been an active participant in the Portuguese American Citizenship Project since 2003.

Prior to the 2006 elections, postcards in Portuguese, Spanish and English were not sent to every registered voter in the organization reminding them of the date and polling hours for each election. The parish chose not to send the cards for any of the 2006 elections.

---

\* Voter turnout is the number of citizens voting in an election divided by the total number of citizens registered to vote. Voter turnout for each election is based on Merced county residents only.

## RESULTS

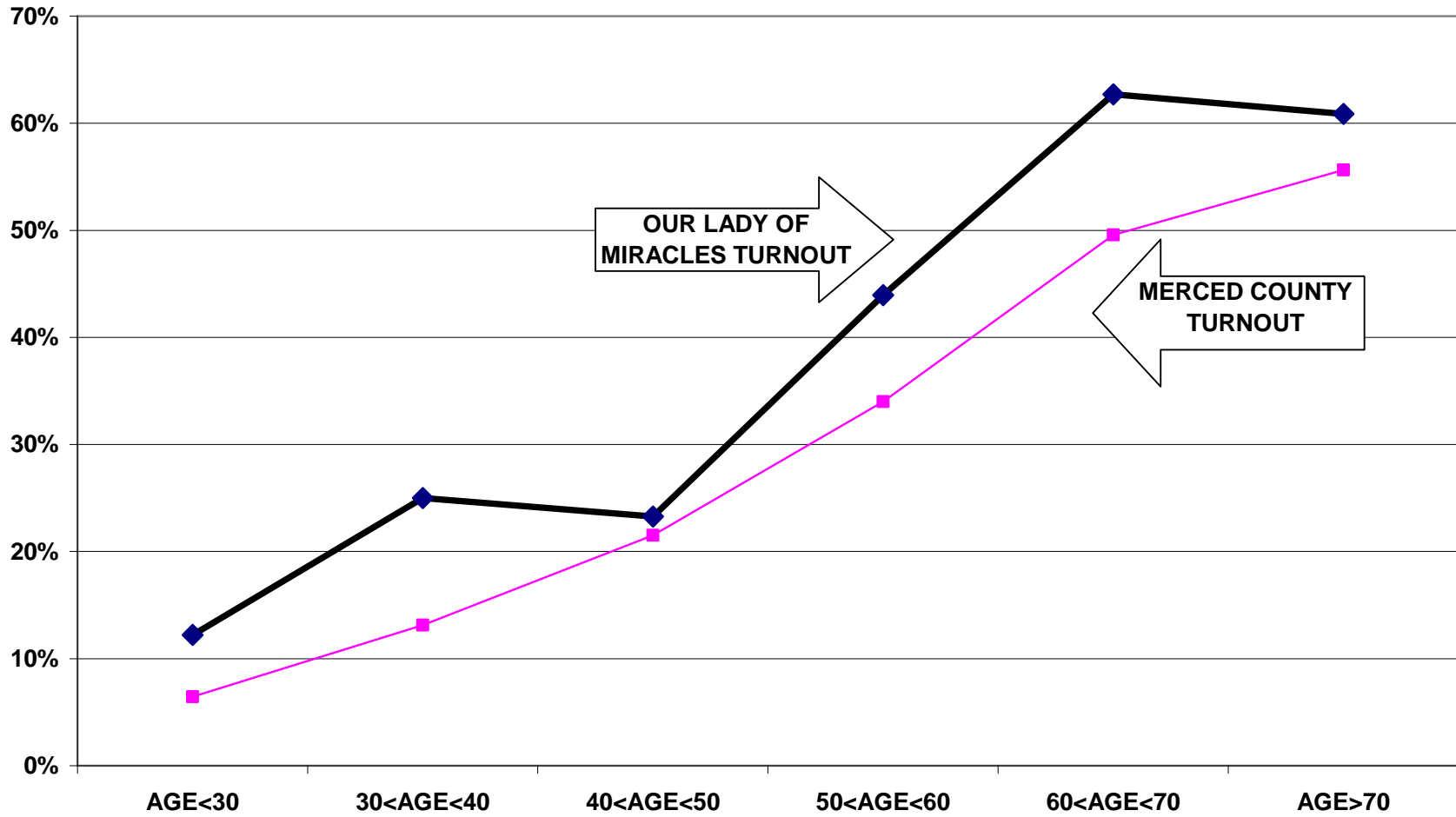
Our Lady of Miracles Parish heads of household voter turnout in Merced county was higher than the countywide turnout in the June 2006 Primary Election and the November 2006 General Election. Heads of household turnout for the June 2006 Primary Elections was 48%, as compared to the countywide turnout of 26%. Our Lady of Miracles Parish heads of household turnout for the November 2006 General Election was 75%, as compared to the countywide turnout of 49%.

Voter turnout for all family members is not uniform across age groups. Voters under 30 years of age and even those between 30 and 40 years old had lower turnout rates than the older voters. This is true for the registered voters in the parish and true for the registered voters in the community at large.

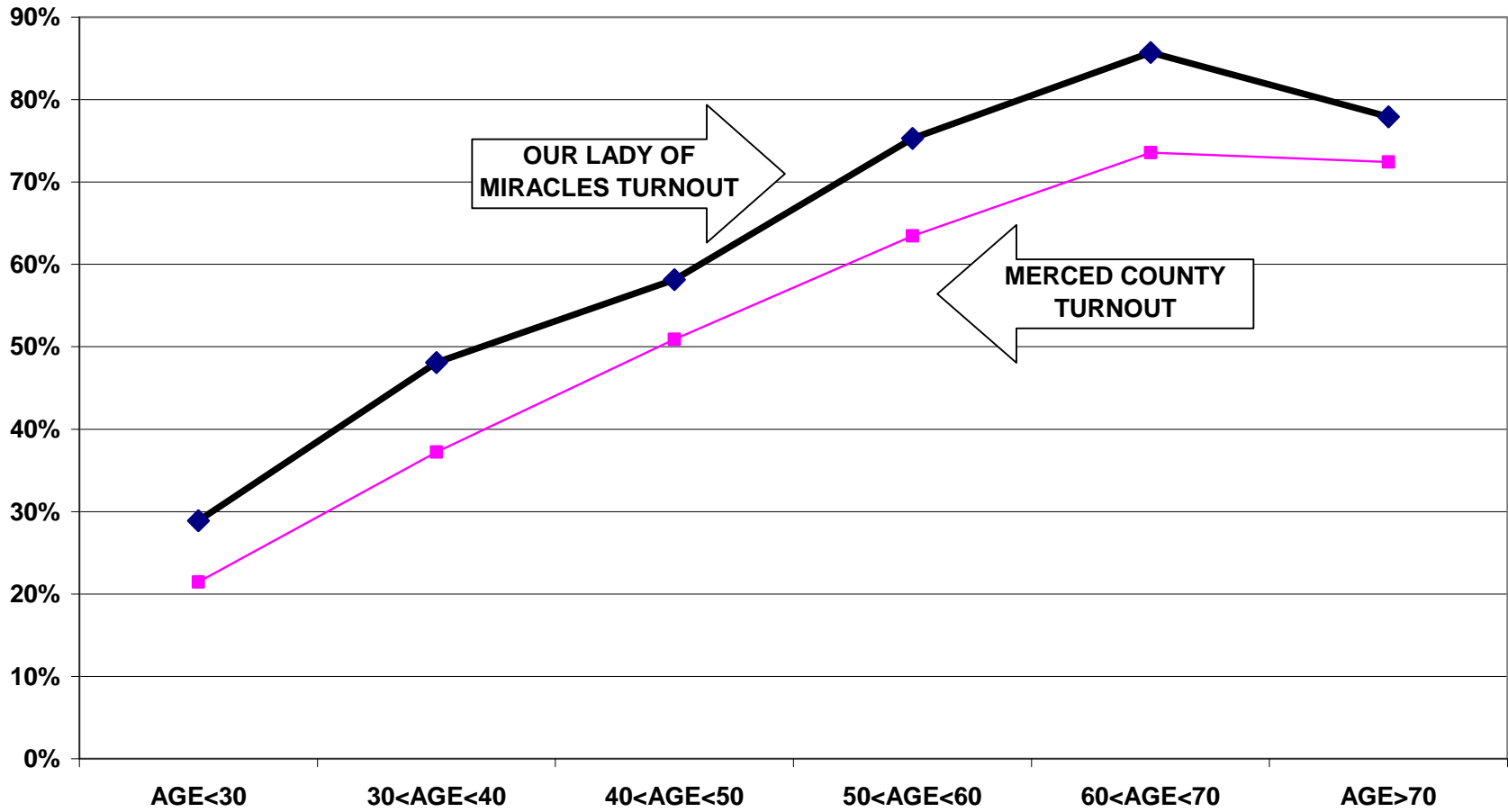
For example, registered voters associated with the parish under 30 years old had a 12% turnout rate in the June 2006 elections, while voters between 60 and 70 years old had a 63% turnout rate. For the November 2006 elections, the under 30 year old associated voters had a 29% turnout rate compared to a 86% turnout rate for voters between 60 and 70 years old.

The following graphs for the June and November 2006 elections illustrate the relationship between turnout rates and age. These graphs refer to all family members associated with the parish, not just heads of household.

### TURNOUT BY AGE JUNE 2006 OUR LADY OF MIRACLES PARISH ALL HOUSEHOLD MEMBERS



### TURNOUT BY AGE NOVEMBER 2006 OUR LADY OF MIRACLES PARISH ALL HOUSEHOLD MEMBERS



## RECOMMENDATIONS

- The parish has an enviable record of voter turnout. The decision by the parish's administration not to send cards out in 2006 appears to have no measurable impact on reducing voter turnout. Because the parish administration appears to wish to withdraw from active participation in the Project, we have no recommendations for actions within the scope of Project. The Project is prepared to assist the parish in measuring voter turnout in the future if it so desires.

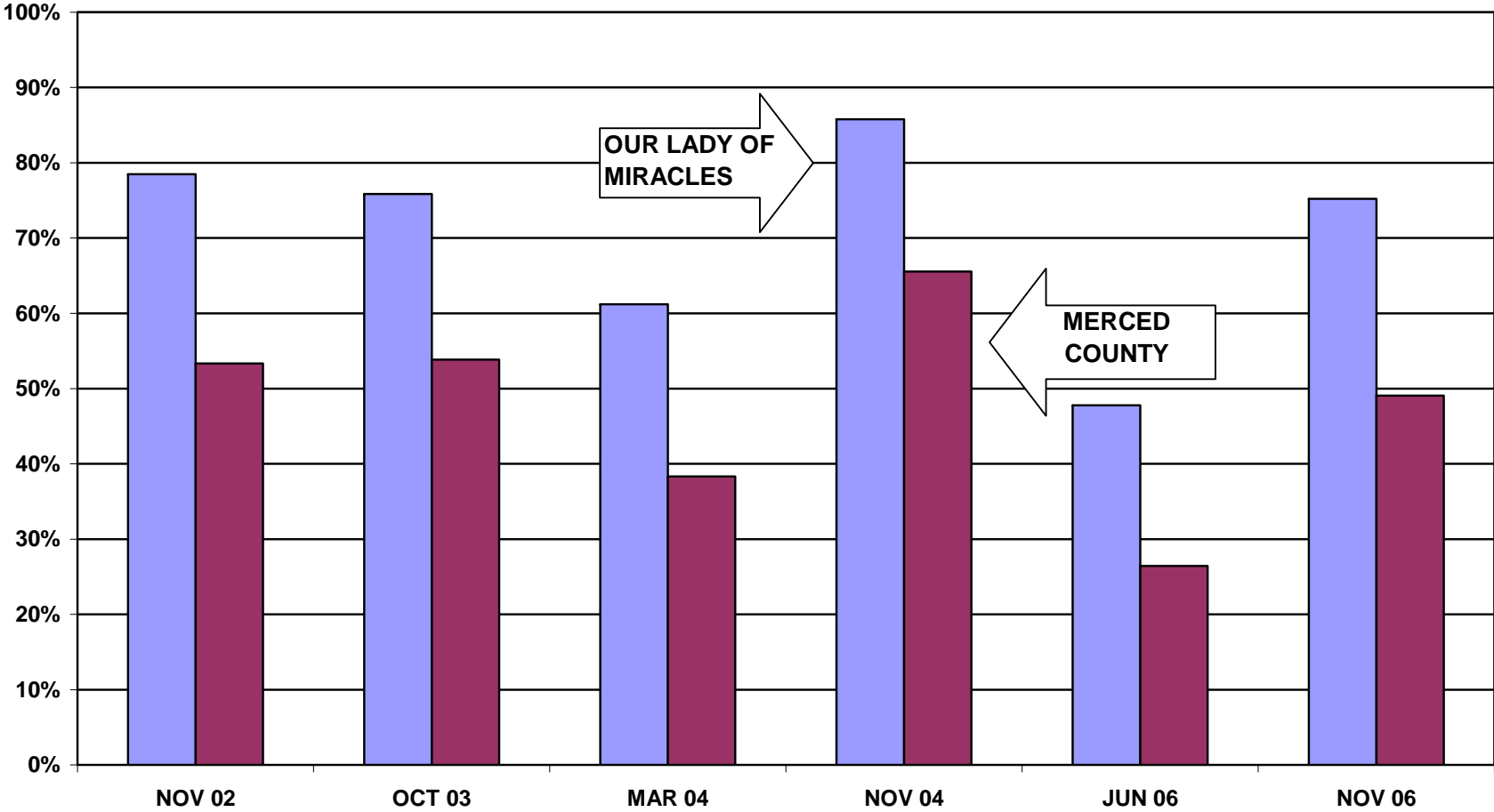
# APPENDIX

- Historical Data 9
- Registered Voter Turnout Bar Graph 10
- Difference in Voter Turnout Bar Graph 11
- Registered Voters vs. Actual Voters June 2006 Bar Graph 12
- Registered Voters vs. Actual Voters November 2006 Bar Graph 13

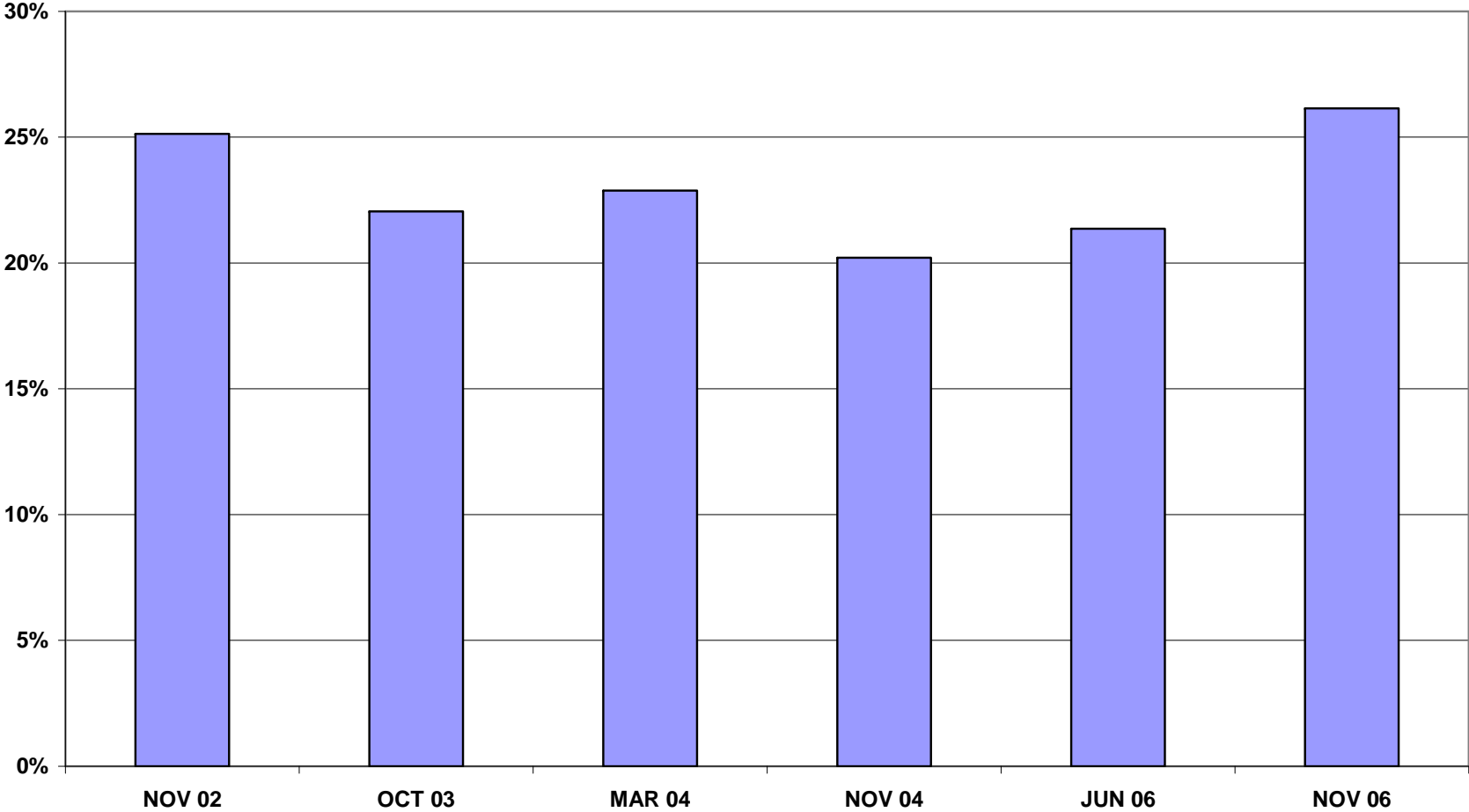




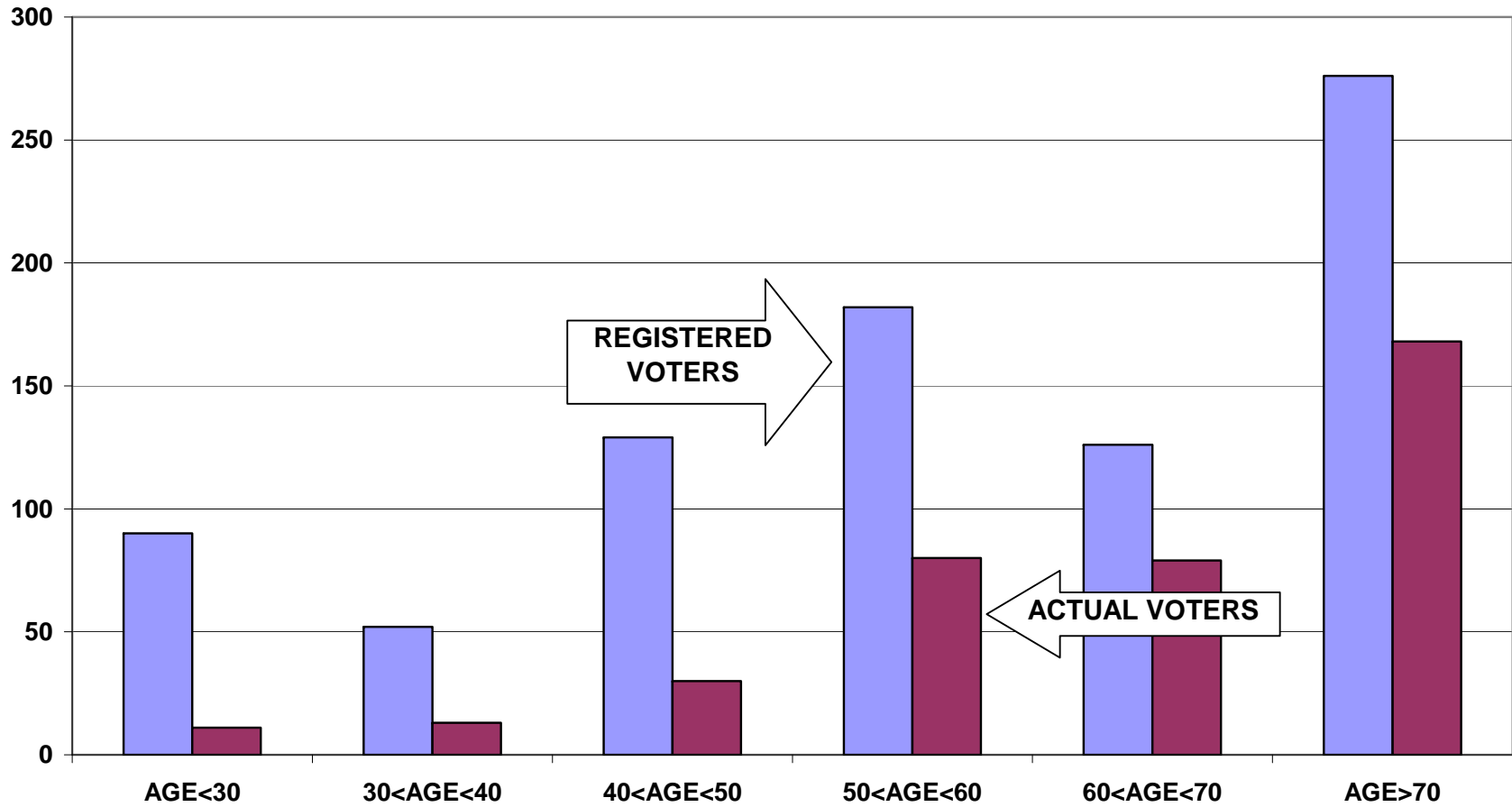
**REGISTERED VOTER TURNOUT  
COMPARISON OF MERCED COUNTY  
AND OUR LADY OF MIRACLES PARISH  
HEADS OF HOUSEHOLD**



**DIFFERENCE IN VOTER TURNOUT BETWEEN  
OUR LADY OF MIRACLES VOTERS AND MERCED COUNTY VOTERS  
HEADS OF HOUSEHOLD**



**REGISTERED VOTERS VERSUS ACTUAL VOTERS JUNE 2006  
OUR LADY OF MIRACLES PARISH  
ALL HOUSEHOLD MEMBERS**



**REGISTERED VOTERS VERSUS ACTUAL VOTERS NOVEMBER 2006  
OUR LADY OF MIRACLES PARISH  
ALL HOUSEHOLD MEMBERS**

