

THE PORTUGUESE AMERICAN CITIZENSHIP PROJECT
A NON-PARTISAN INITIATIVE TO PROMOTE CITIZENSHIP AND CIVIC INVOLVEMENT

UNIAO PORTUGUESA DO ESTADO DE CALIFORNIA
STANISLAUS COUNTY, CALIFORNIA



EVALUATION
OF
THE 2008 ELECTIONS

March 16, 2009

SUPPORTED BY THE
LUSO-AMERICAN
FOUNDATION

REPORT CONTENTS

- **STATISTICS AND SUMMARY OF WORK** 3
- **RESULTS** 4
- **RECOMMENDATIONS** 8
- **APPENDIX** 9

KEY STATISTICS

- **Number of Members in Stanislaus County: 1,227**
- **Heads of Household registered to vote in Stanislaus County: 357 (29% residing in Stanislaus County)**
- **All Household Members registered to vote in Stanislaus County: 604**
- **Heads of Household voter turnout* in February 2008 – 67% (county-wide turnout 43%)**
- **Heads of Household voter turnout in June 2008 – 44% (county-wide turnout 22%)**
- **Heads of Household voter turnout in November 2008 – 85% (county-wide turnout 71%)**

SUMMARY OF WORK

Uniao Portuguesa do Estado de California (UPEC) has been an active participant in the Portuguese American Citizenship Project since 2003.

For the 2008 February, June, and November elections, postcards in Portuguese and English were sent to every registered voter in the organization reminding them of the date and polling hours for each election.

* Voter turnout is the number of citizens voting in an election divided by the total number of citizens registered to vote. Voter turnout for each election is based on Stanislaus county residents only.

RESULTS

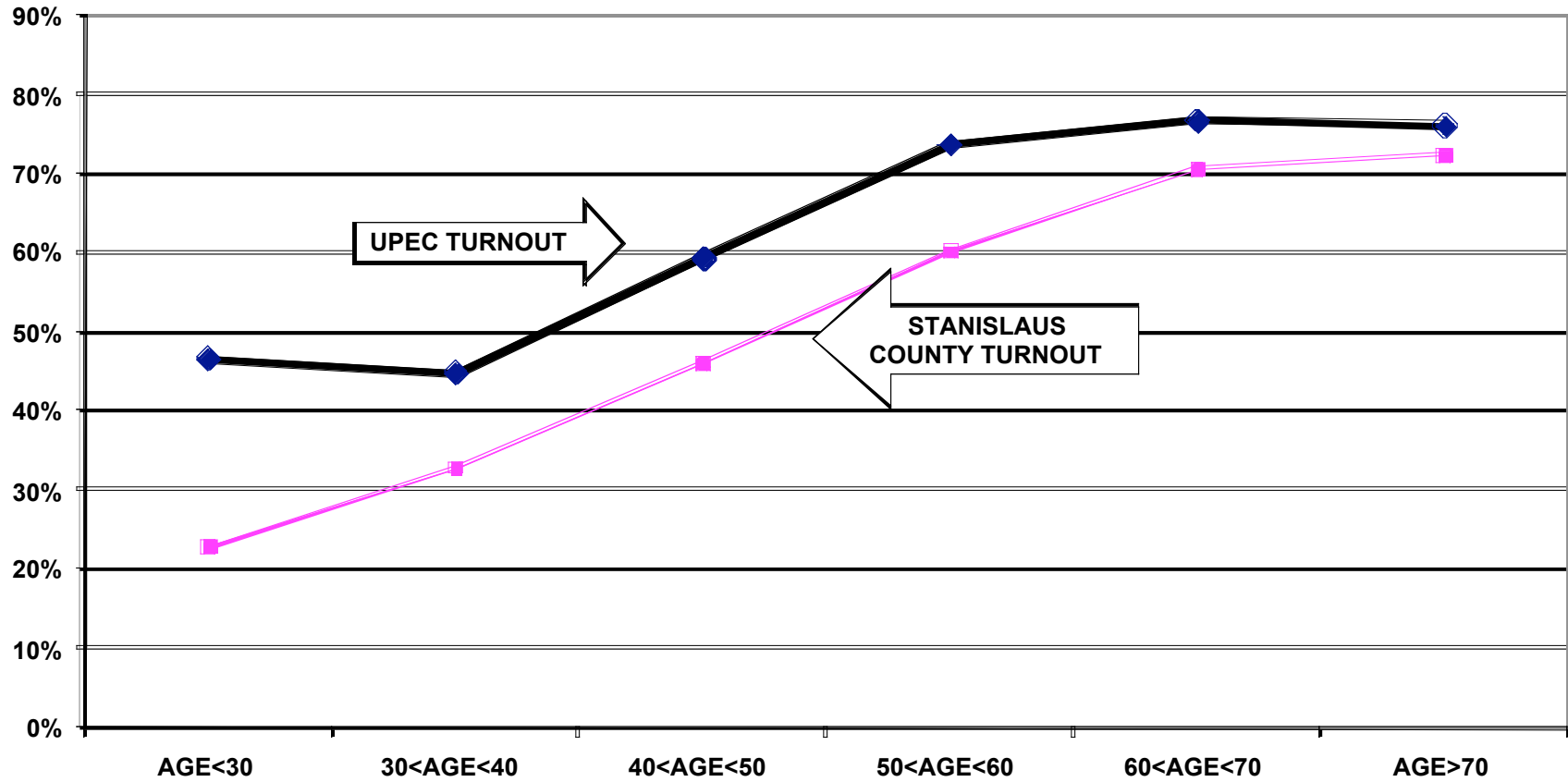
In Stanislaus county, UPEC heads of household voter turnout for the 2008 elections was higher than the countywide turnout. Heads of household turnout for the February Presidential Primary elections was 67%, as compared to the countywide turnout of 43%. For the June Primary elections heads of household turnout was 44%, as compared to the countywide turnout of 22%. UPEC heads of household turnout for the November Presidential election was 85%, as compared to the countywide turnout of 71%.

Voter turnout for all family members is not uniform across age groups. Voters under 30 years of age and even those between 30 and 40 years old had lower turnout rates than the older voters. This is true for the registered voters who are members of the UPEC and true for the registered voters in the community at large.

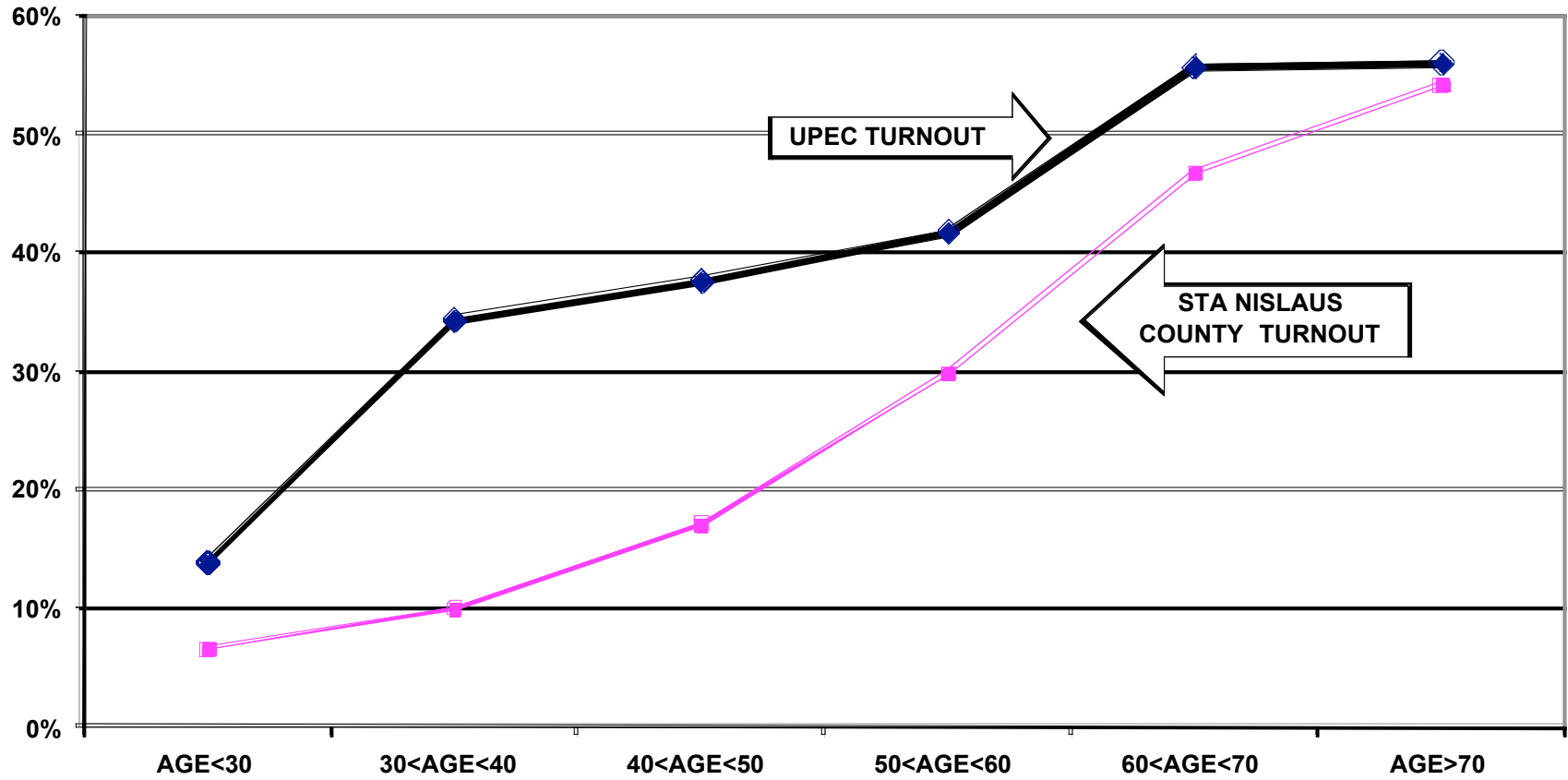
For example, registered voters associated with UPEC under 30 years old had a 47% turnout rate in the February elections, while voters between 60 and 70 years old had a 77% turnout rate. For the June elections, the under 30 year old associated voters had a 14% turnout rate compared to a 56% turnout rate for voters between 60 and 70 years old. Voters associated with UPEC under 30 years old had a 81% turnout rate in the November Presidential elections, while voters between 60 and 70 years old had a 92% turnout rate.

The following graphs for the February, June, and November 2008 elections illustrate the relationship between turnout rates and age. These graphs refer to all family members associated with the organization, not just heads of household.

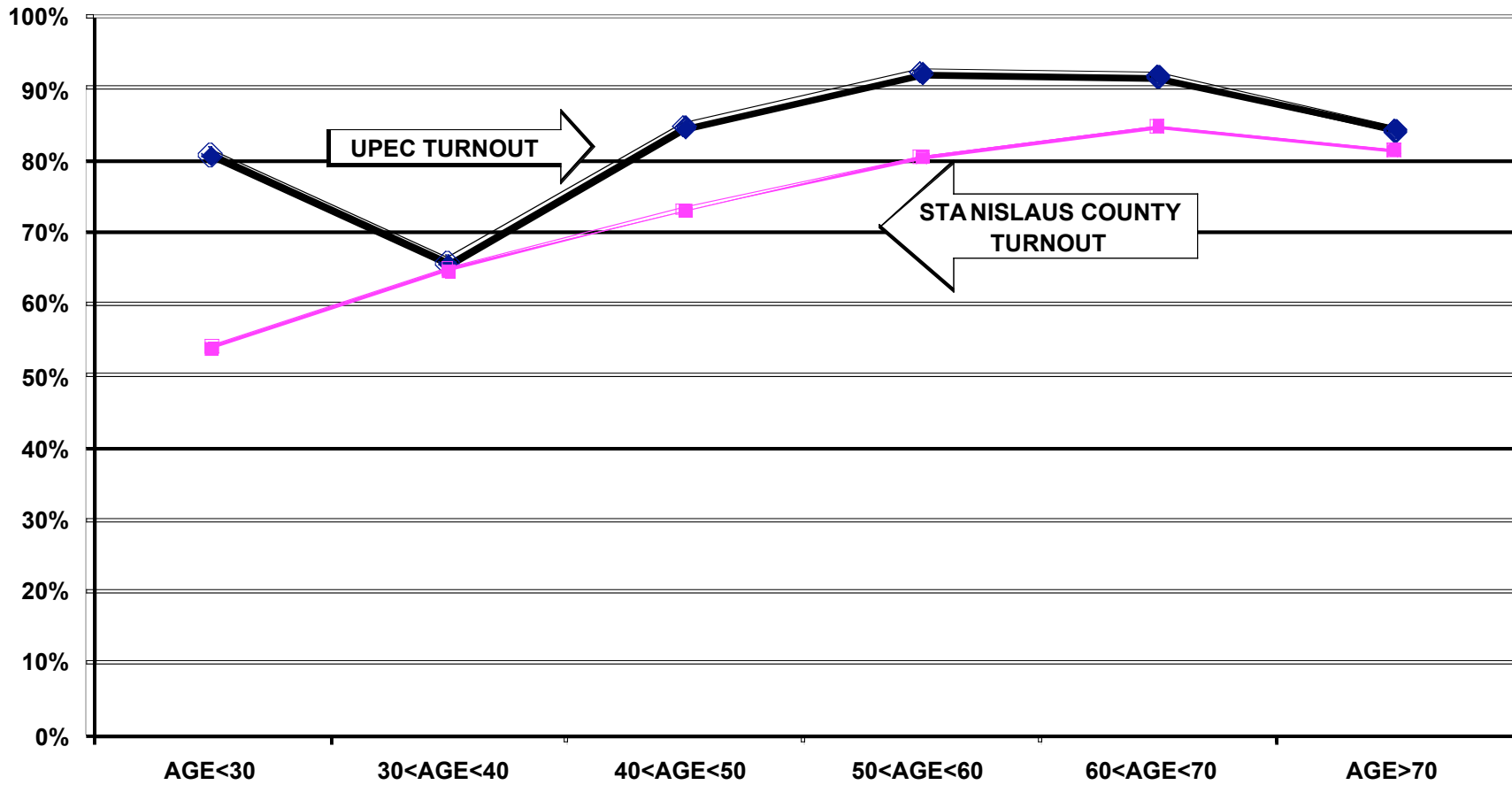
TURNOUT BY AGE FEBRUARY 2008 UNIÃO PORTUGUESA DO ESTADO DE CALIFORNIA ALL HOUSEHOLD MEMBERS



TURNOUT BY AGE JUNE 2008
UNIÃO PORTUGUESA DO ESTADO DE CALIFORNIA
ALL HOUSEHOLD MEMBERS



TURNOUT BY AGE NOVEMBER 2008 UNIÃO PORTUGUESA DO ESTADO DE CALIFORNIA ALL HOUSEHOLD MEMBERS



RECOMMENDATIONS

- UPEC must determine if and how it will provide funding for the costs of participation in the Citizenship Project. The Luso American Foundation has completed 10 years of financial support for the Project but will terminate this support for 2009 and beyond. In 2009, the Project will continue to provide data processing and assist in the preparation of voter cards. With a mailing permit, the cost of printing and mailing the cards for a June Primary, and November City elections is approximately \$700.
- If UPEC cannot provide the financial support for this mailing and/or cannot accomplish the logistics of printing and mailing the voter cards, interested members of the community should examine the accomplishments of the past ten years and determine how to build on these achievements using alternative methods of promoting civic participation.
- The voter registration rate for UPEC's heads of household – 29 percent – is low compared to most other participating groups in the Portuguese American Citizenship Project. Many members are probably not U.S. citizens, and many who are U.S. citizens have not yet registered to vote. These two problems must be addressed both for the benefit of UPEC, but also for the benefit of the individuals themselves. In order to encourage increased voter registration and revive organizational commitment to strong voter turnout, UPEC should consider sending letters to every member family, reminding them of UPEC's commitment to civic involvement and encouraging voter registration for members who are citizens but have not yet registered.

APPENDIX

- Historical Data 10
- Registered Voter Turnout Graph 11
- Difference in Voter Turnout Graph 12
- Registered Voters vs. Actual Voters February 2008 Graph 13
- Registered Voters vs. Actual Voters June 2008 Graph 14
- Registered Voters vs. Actual Voters November 2008 Graph 15

**HISTORICAL DATA: UPEC
REGISTRATION - VOTING**

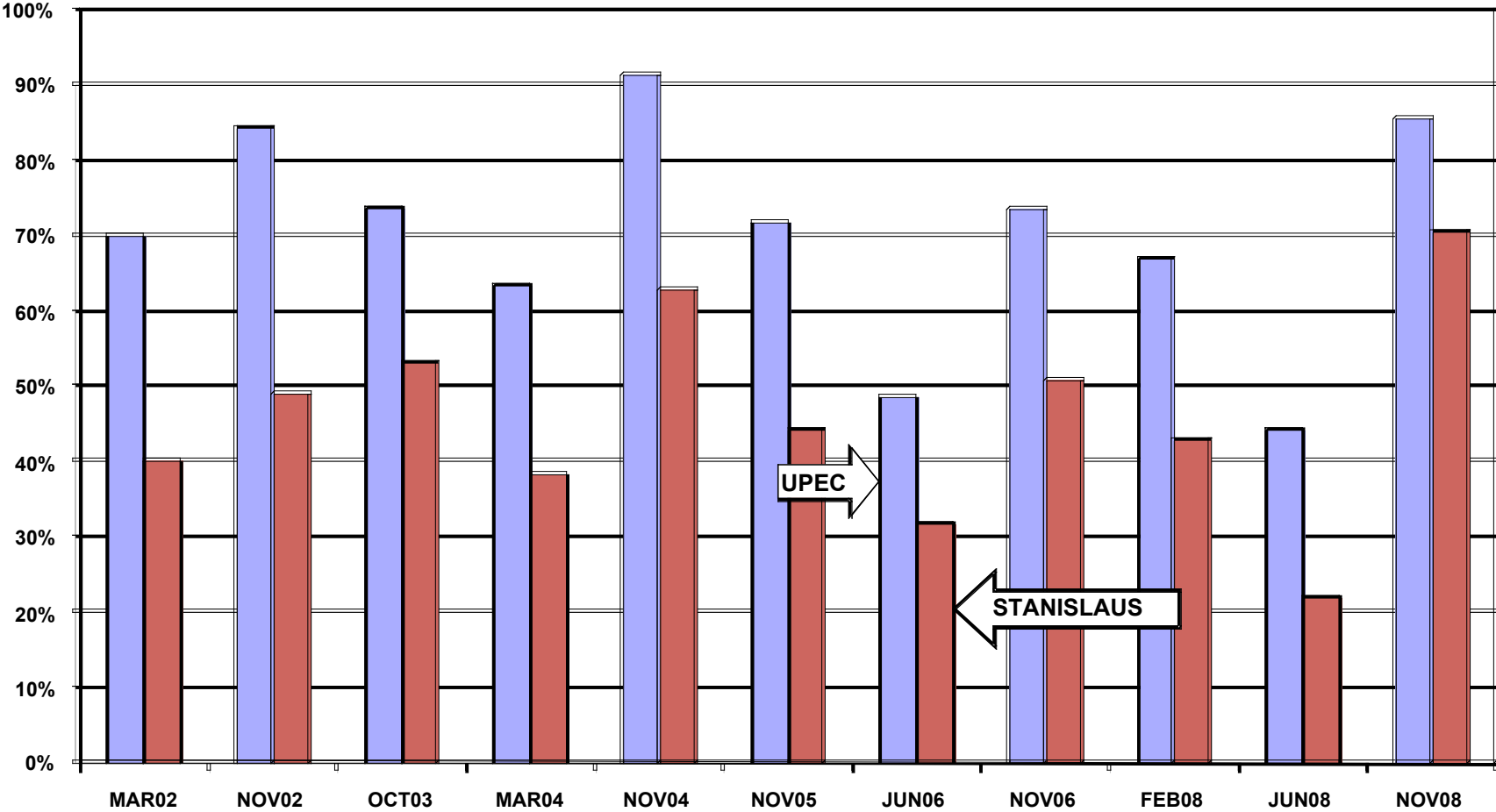
MEMBERS IN THE COUNTY OF STANISLAUS	1,227
MEMBERS REGISTERED TO VOTE IN THE COUNTY OF STANISLAUS	357 HEADS OF HOUSEHOLD
	604 ALL FAMILY MEMBERS

VOTING PERFORMANCE OF STANISLAUS RESIDENTS

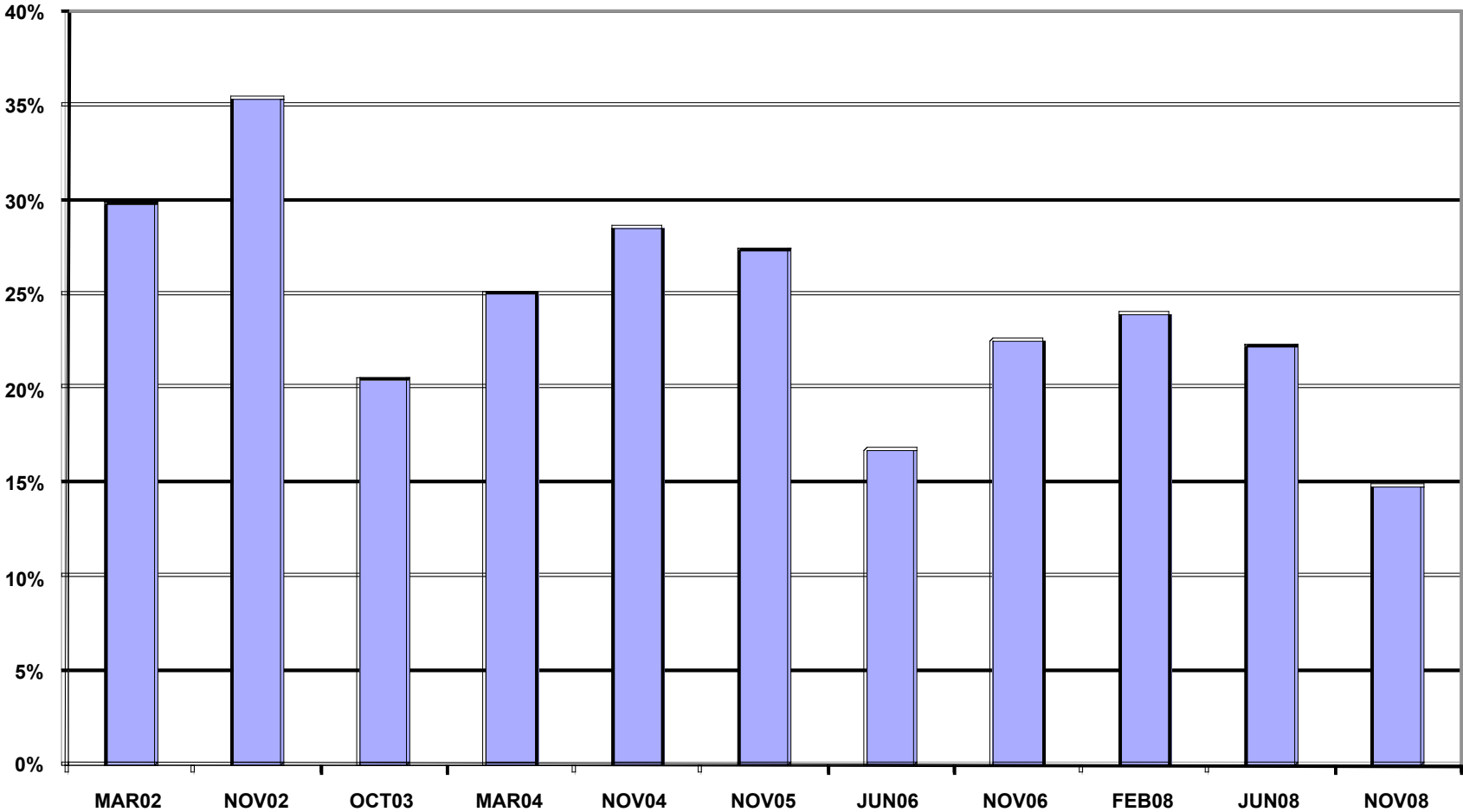
	HEADS OF HOUSEHOLD	AS PERCENT OF ALL REGISTERED MEMBERS ELIGIBLE TO VOTE	COUNTY WIDE VOTING HISTORY AS PERCENT OF ALL REGISTERED VOTERS
		COMPARABLE STATISTICS	
VOTERS OCT 2003	87	73.7%	53.2%
VOTERS MAR 2004	78	63.4%	38.4%
VOTERS NOV 2004	117	91.4%	62.9%
VOTERS NOV 2005	99	71.7%	44.4%
VOTERS JUN 2006	68	48.6%	31.9%
VOTERS NOV 2006	105	73.4%	50.9%
VOTERS FEB 2008	239	66.9%	43.0%
VOTERS JUN 2008	158	44.3%	22.0%
VOTERS NOV 2008	305	85.4%	70.6%

Note: Data for 2008 elections are based on registration from 2009

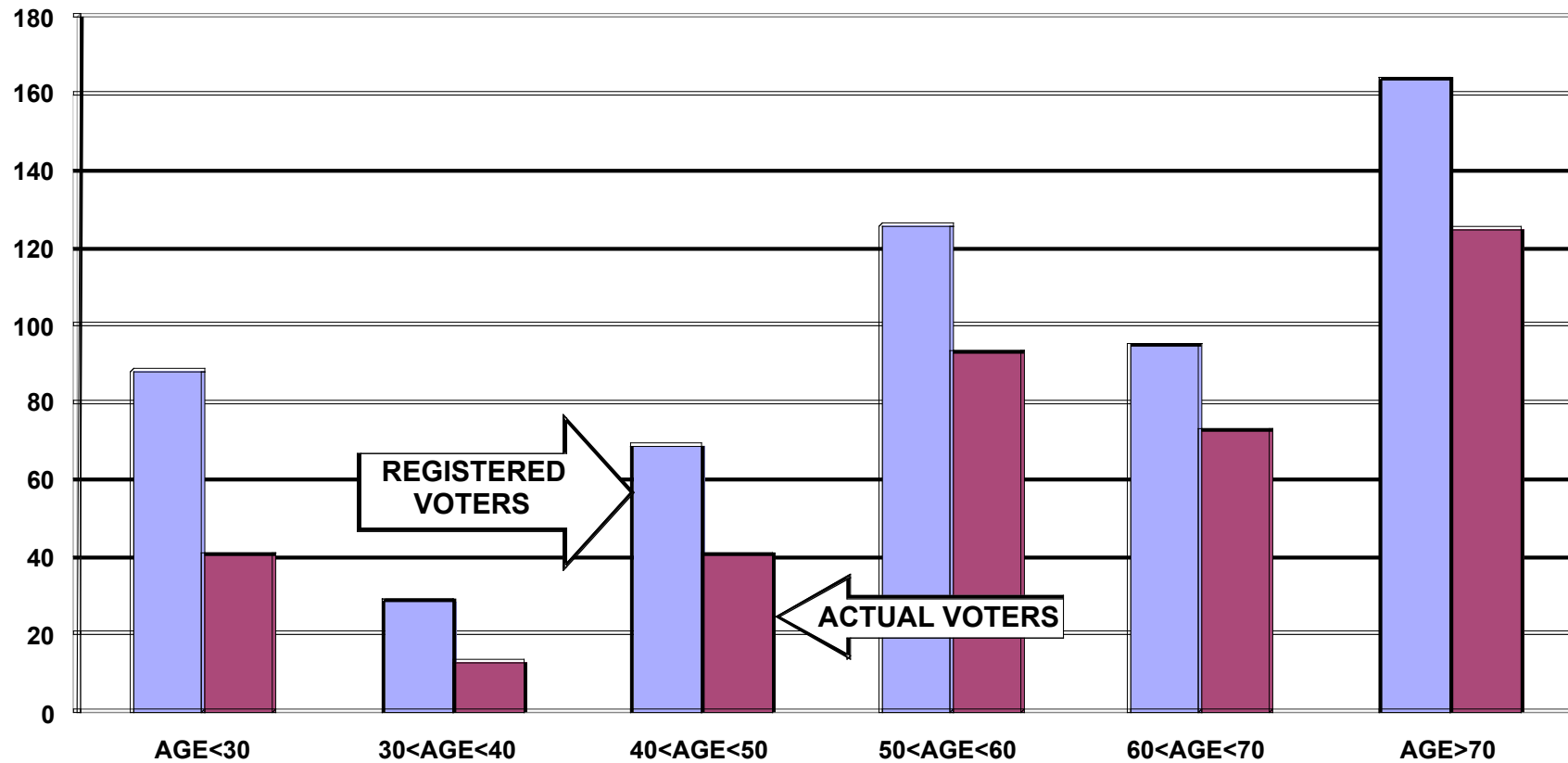
REGISTERED VOTER TURNOUT COMPARISON OF STANISLAUS COUNTY AND UNIAO PORTUGUESA DO ESTADO DE CALIFORNIA HEADS OF HOUSEHOLD



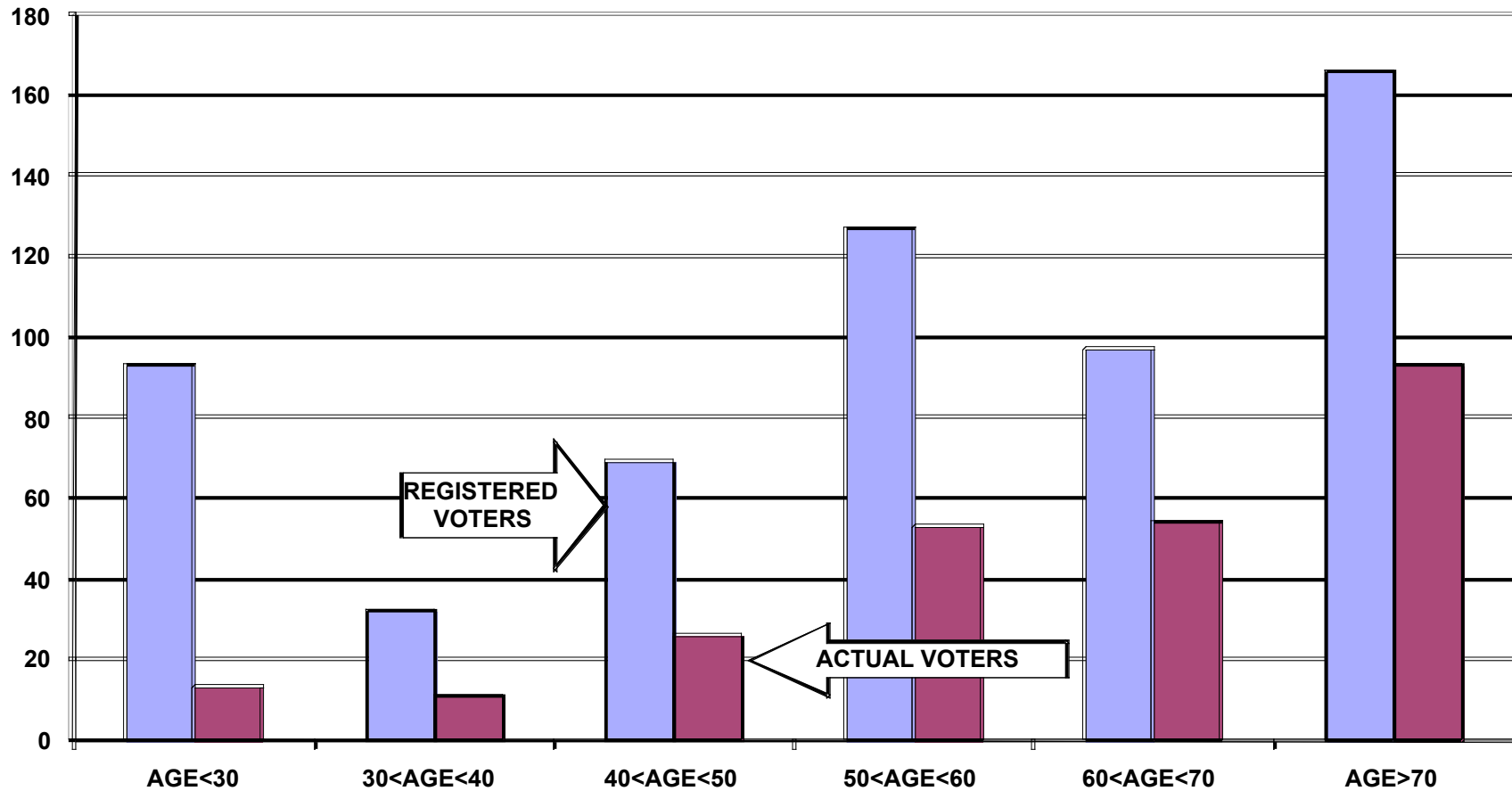
**DIFFERENCE IN VOTER TURNOUT BETWEEN
UNIAO PORTUGUESA DO ESTADO DE CALIFORNIA VOTERS AND
STANISLAUS COUNTY VOTERS
HEADS OF HOUSEHOLD**



REGISTERED VOTERS VERSUS ACTUAL VOTERS FEBRUARY 2008
UNIÃO PORTUGUESA DO ESTADO DE CALIFORNIA
ALL HOUSEHOLD MEMBERS



REGISTERED VOTERS VERSUS ACTUAL VOTERS JUNE 2008
UNIÃO PORTUGUESA DO ESTADO DE CALIFORNIA
ALL HOUSEHOLD MEMBERS



REGISTERED VOTERS VERSUS ACTUAL VOTERS NOVEMBER 2008
UNIÃO PORTUGUESA DO ESTADO DE CALIFORNIA
ALL HOUSEHOLD MEMBERS

