



PACP
PORTUGUESE AMERICAN CITIZENSHIP PROJECT

A NON-PARTISAN INITIATIVE TO PROMOTE CITIZENSHIP AND CIVIC INVOLVEMENT

**CASA dos AÇORES
HILMAR, CA
SPECIAL ATWATER REPORT**

**EVALUATION
OF
THE 2012 ELECTIONS**

**PREPARED
APRIL 30, 2013**

Supported by Luso-American Foundation
Government of the Autonomous Region of the Azores
Business and Community Leaders in the Portuguese American Community

REPORT CONTENTS

Statistics and Summary of Work

2

Results

2

Results Graphs

3

Voter Turnout Summary	3
Voter Turnout by Age	4
Voter Turnout – 2008 vs. 2012 Presidential Elections	5

Appendices

6

Registered Voters by Age and Party	7
Voter Turnout by Age and Voting Method - November 2012	8
Voter Turnout by Age and Voting Method - November 2008	9
Registered vs. Actual Voters	10
Voted in both 2008 and 2012 Presidential Elections	11
Voted in all last three elections	11

Key Statistics – 2012

Voter turnout data received from Merced County February 26, 2013.

Casa dos Açores (*Merced County in italics*)

- Registered voters in the City of Atwater
with Portuguese last names: 1,368 (*98,248*)
- Voter Turnout - June 2012: 23.2% (*25.3%*)
- Voter turnout – November 2012: 63.2% (*60.3%*)

Summary of Work

A list of registered voters was created for the city of Atwater by extracting voters from the Merced County list of Registered voters who have a Portuguese last name. The list of Portuguese last name was developed by the Portuguese American Citizenship Project. Reminder cards were sent out for the November, 2012 election.

Results

Overall voter turnout for the City of Atwater was higher than Casa dos Açores Hilmar in all elections and was higher than Merced County in the November, 2012 election. Atwater turnout was lower than Merced County for the June 2012 election. The City of Atwater turnout for the June Election was 23.2%, as compared to the county wide turnout of 26.6%. The City of Atwater turnout for the November Presidential Elections was 63.2%, which was higher than the county wide turnout of 60.3%.

Voter turnout for the City of Atwater was higher in all age groups than Casa dos Açores and Merced County for the November election. Turnout for the June election was lower for voters age 40 and younger than both Casa dos Açores and Merced County, but was higher than Casa dos Açores in all other age groups.

Voter turnout by gender could not be determined for the City of Atwater because Merced County does not collect or maintain gender information for registered voters.

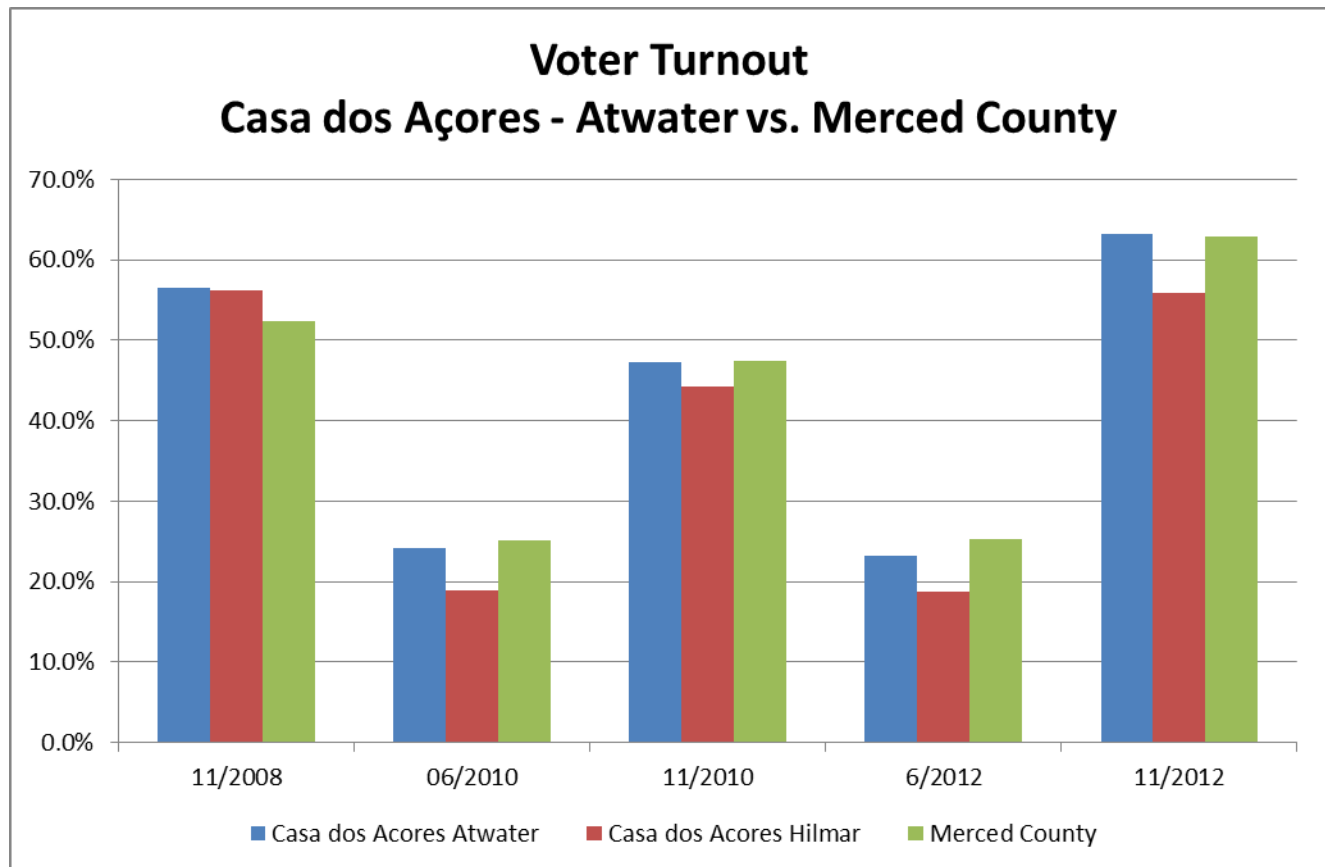
Younger voters, particularly in the 18-30 age group, seem to be moving away from the established political parties and registering as

independents, which is consistent with Casa dos Açores voters. Voters in the 18-30 age group tend to be more conservative than Merced County with more registered Republicans than Democrats, while City of Atwater voters in the 70+ age group have a higher Democratic registration than Merced County voters.

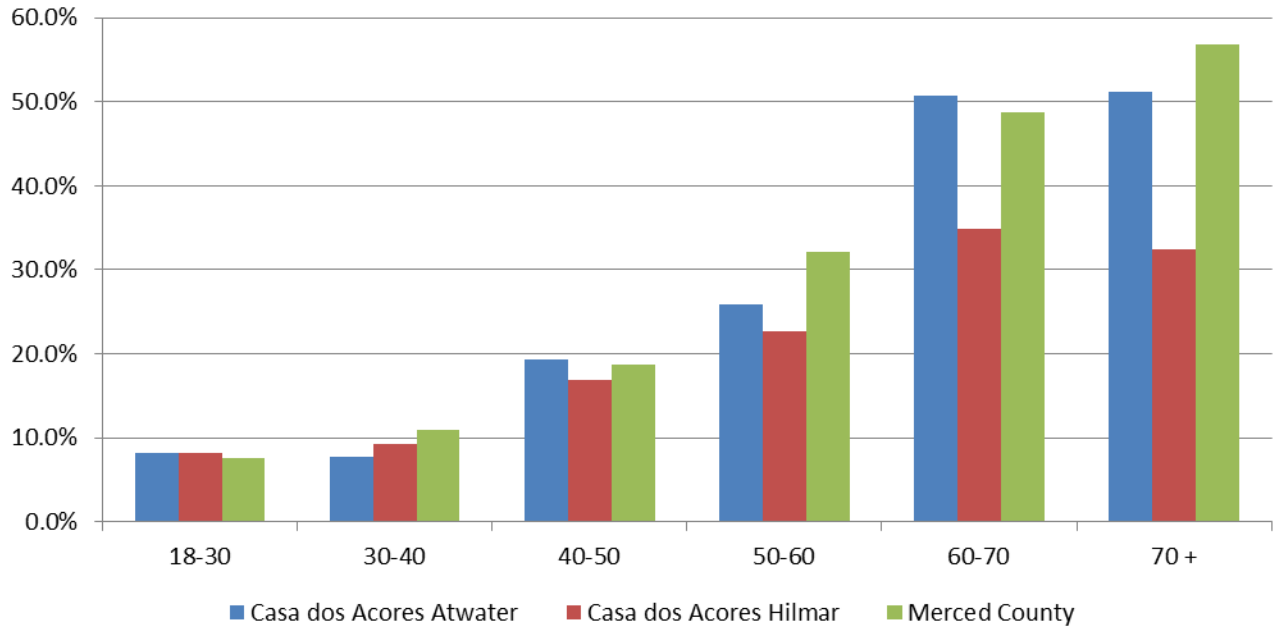
Voters in all age groups are moving more toward voting by absentee ballot rather than going to their local polling place, with absentee turnout higher for the City of Atwater in most age groups.

The following graphs summarize voter turnout for the City of Atwater, Casa dos Açores and Merced County.

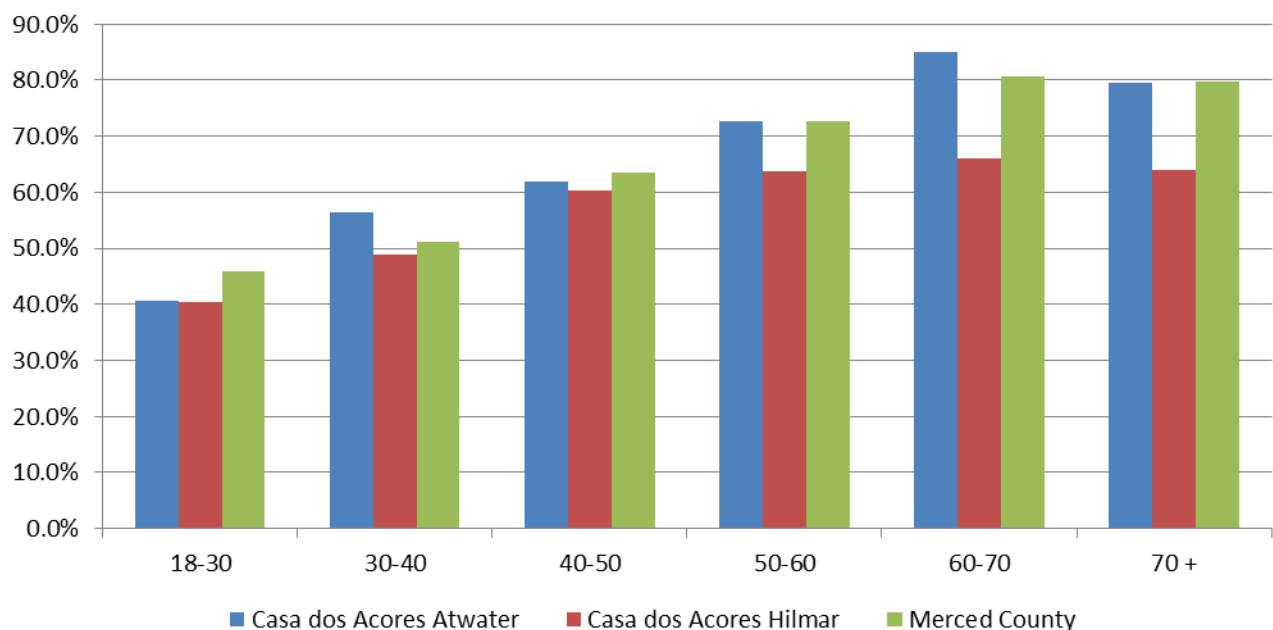
Results Graphs



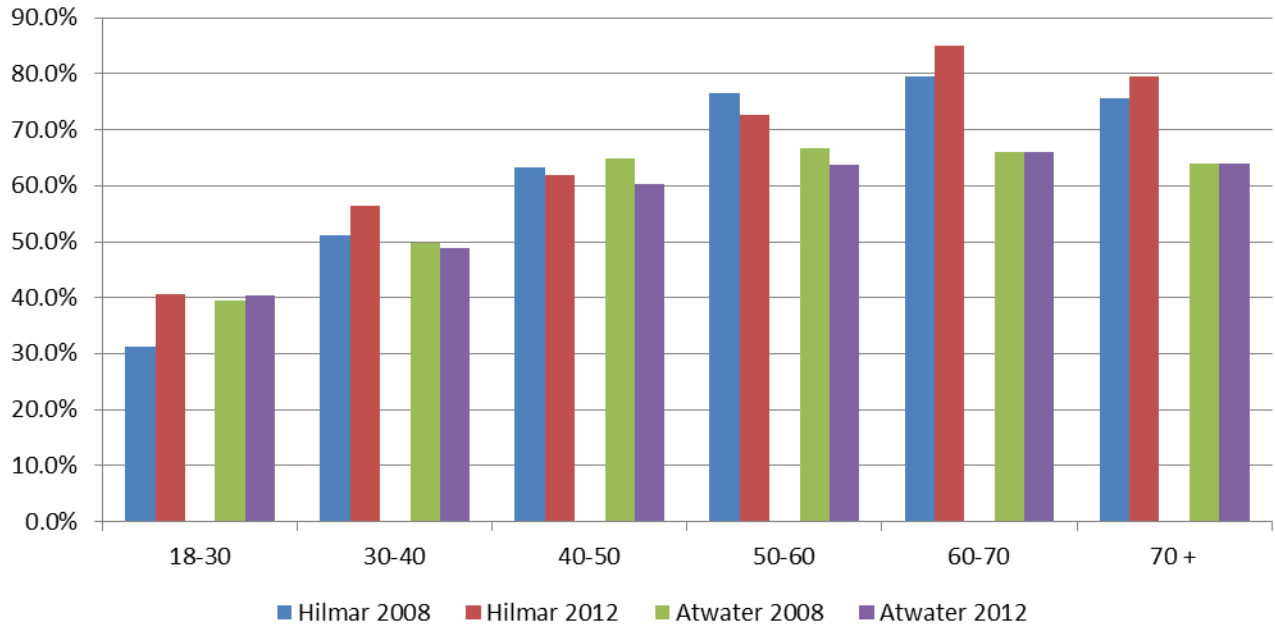
Turnout By Age - June 2012 Casa dos Açores - Atwater vs. Merced County



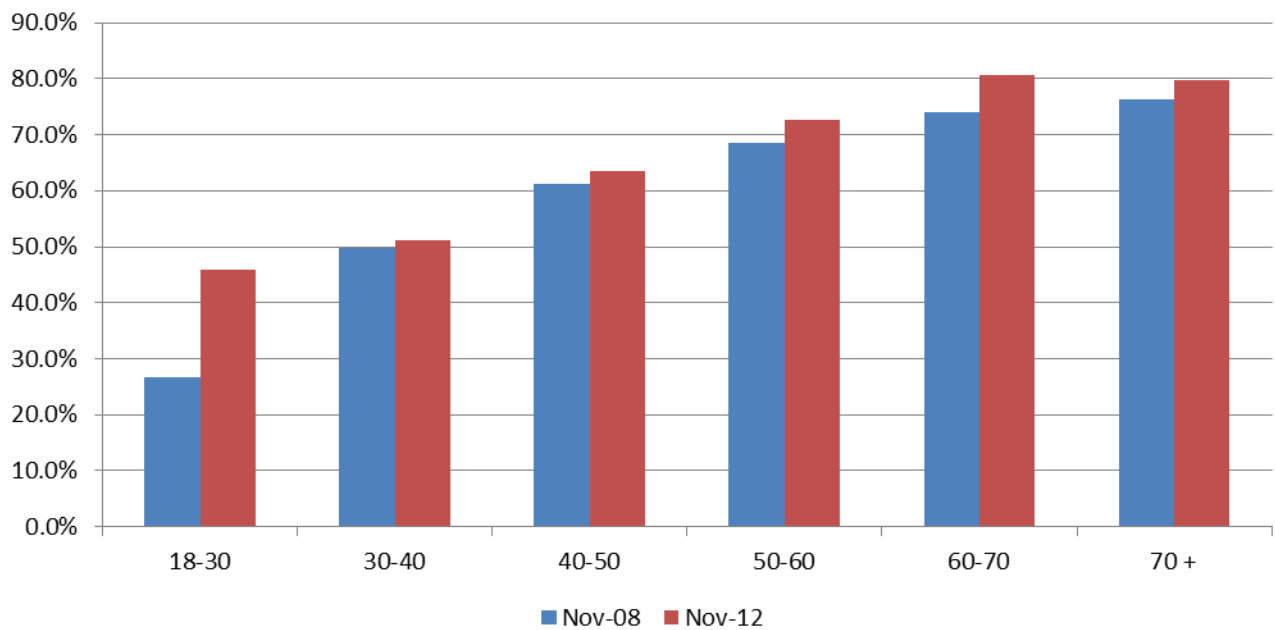
Turnout By Age - November 2012 Casa dos Açores - Atwater vs. Merced County



Voter Turnout 2008 vs. 2012 Presidential Elections Casa dos Açores - Atwater by Age



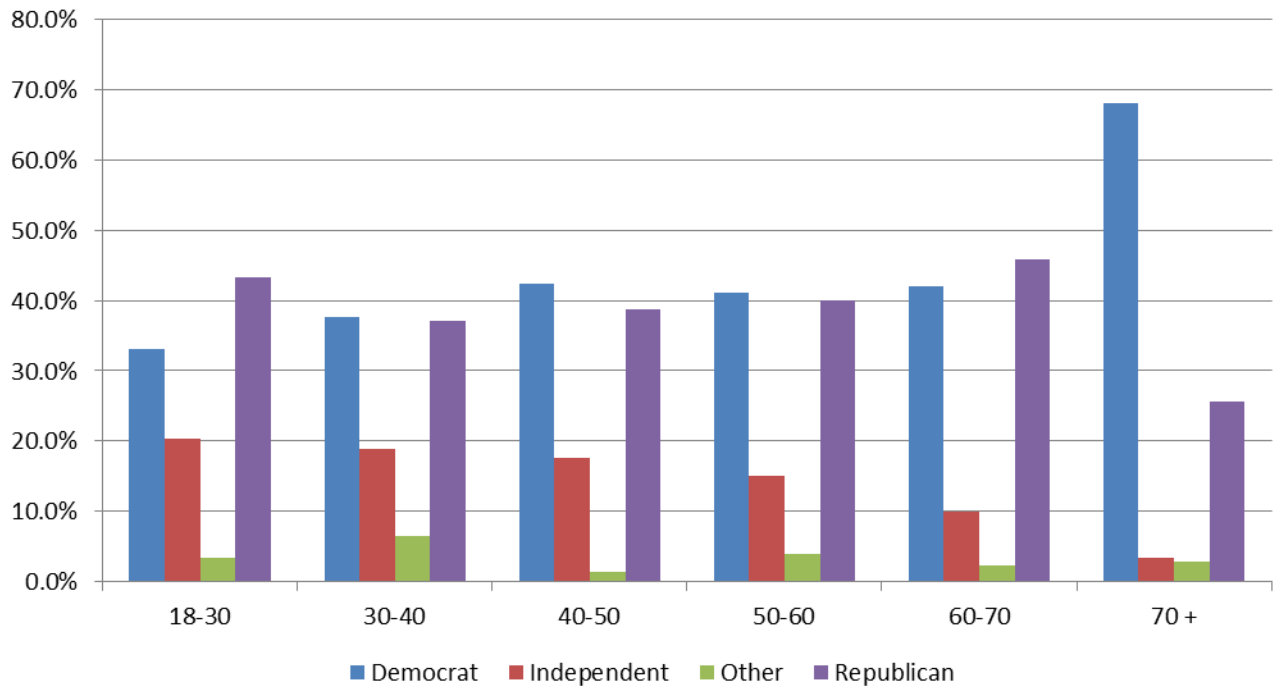
Voter Turnout 2008 vs. 2012 Presidential Elections Merced County by Age



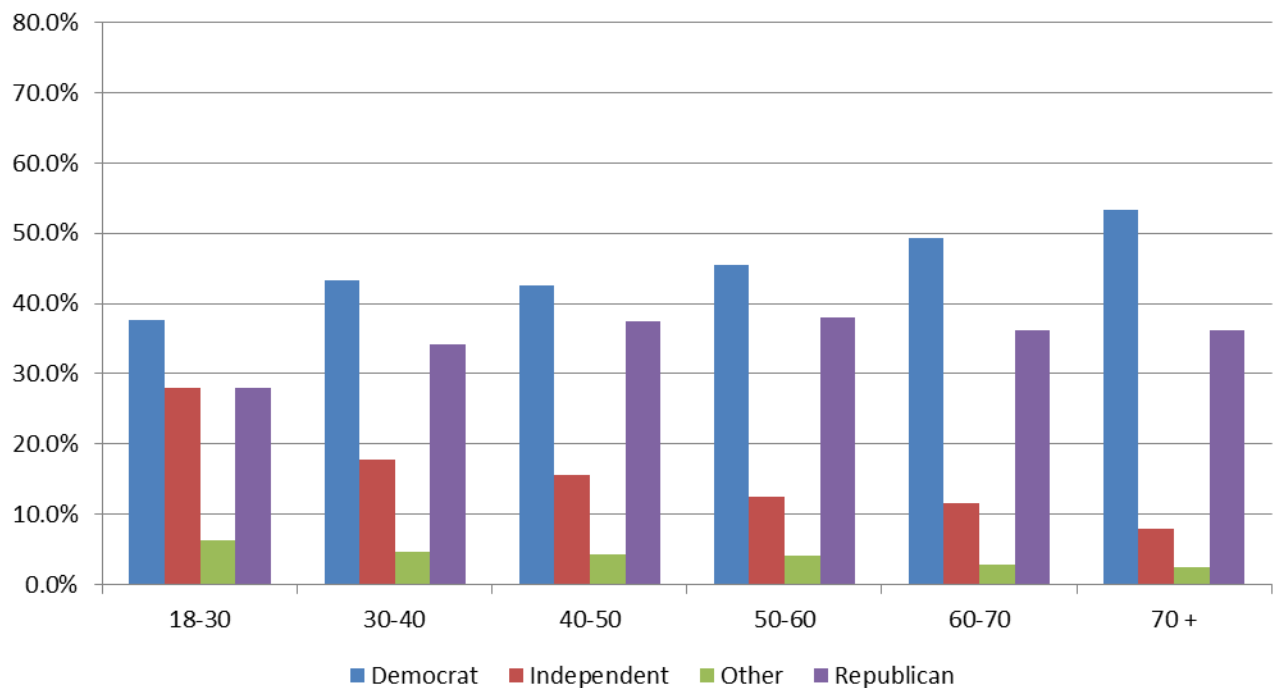
Appendices

Registered Voters by Age and Party	7
Voter Turnout by Age and Voting Method - November 2012	8
Voter Turnout by Age and Voting Method - November 2008	9
Registered vs. Actual Voters	10
Voted in both 2008 and 2012 Presidential Elections	11
Voted in all last three elections	11

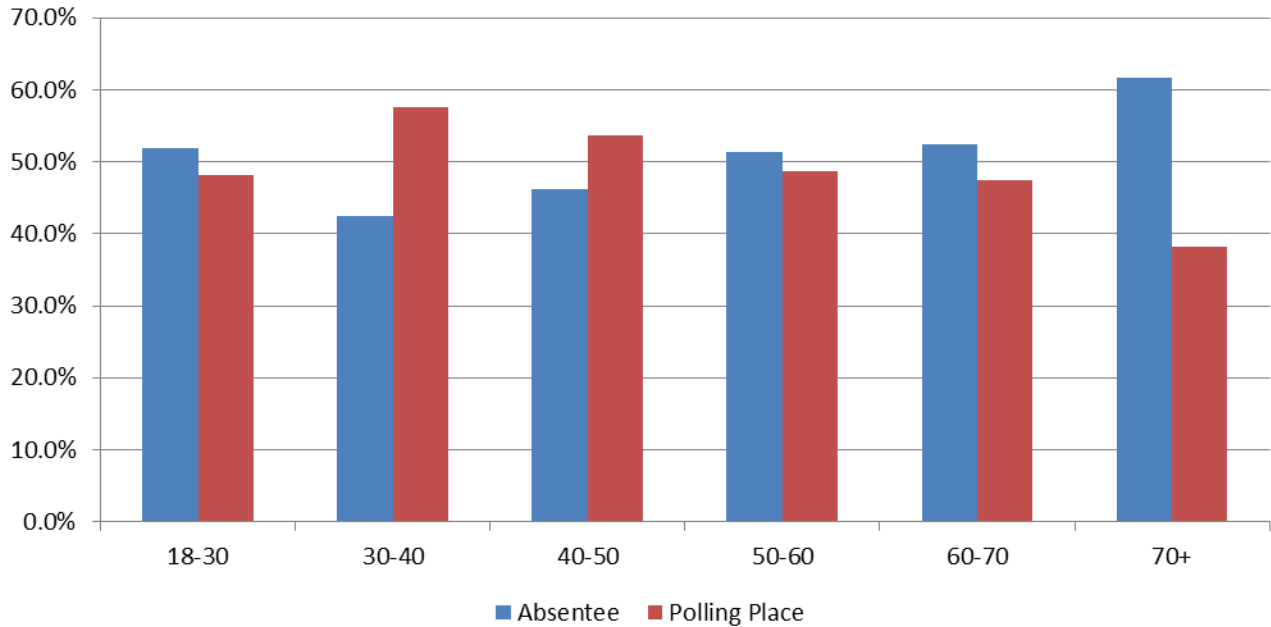
Registered to Vote by Age and Party Casa dos Açores - Atwater - November 2012



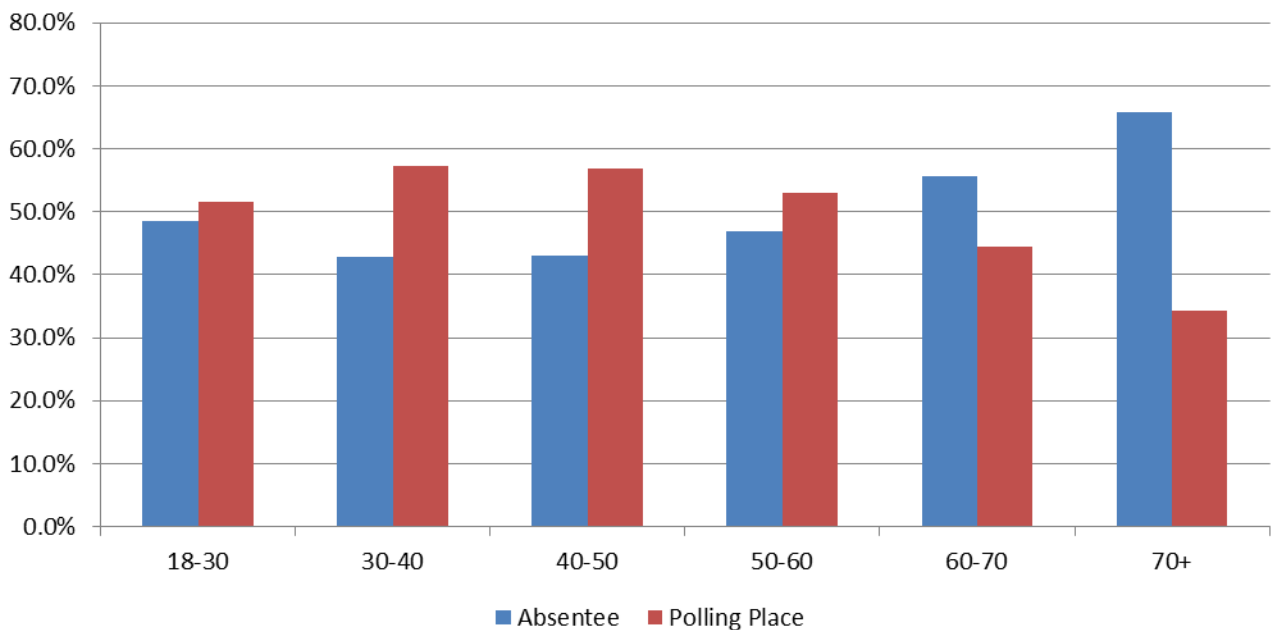
Registered to Vote by Age and Party Merced County - November 2012



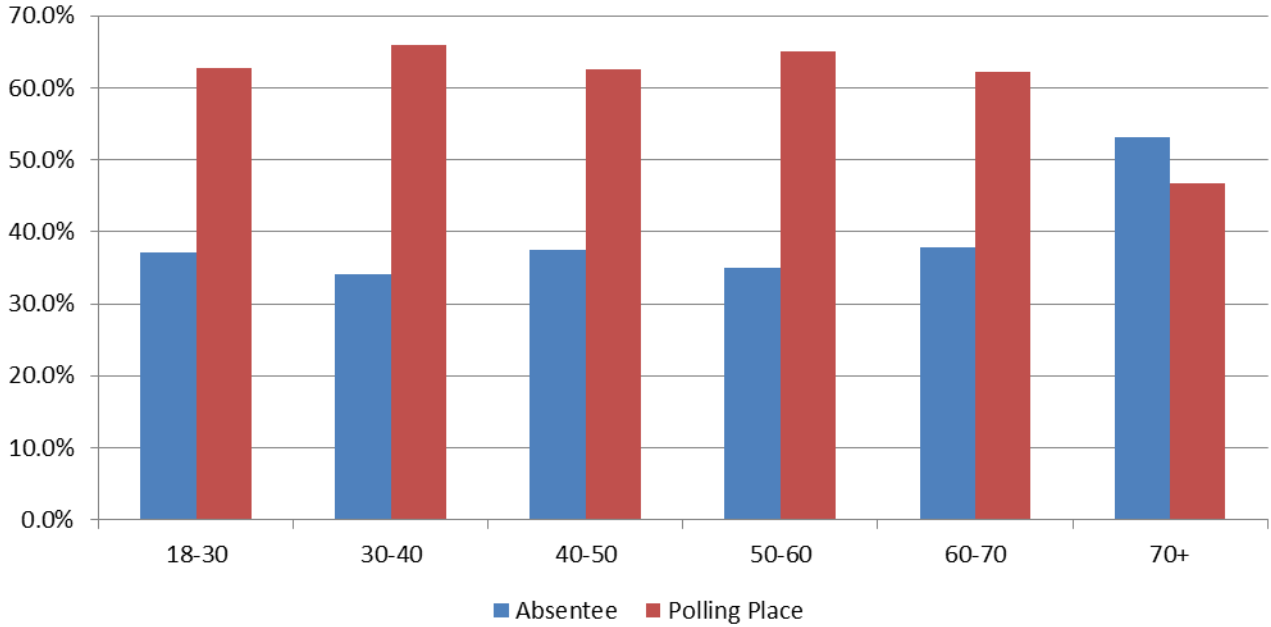
Voter Turnout By Age and Voting Method Casa dos Açores - November 2012



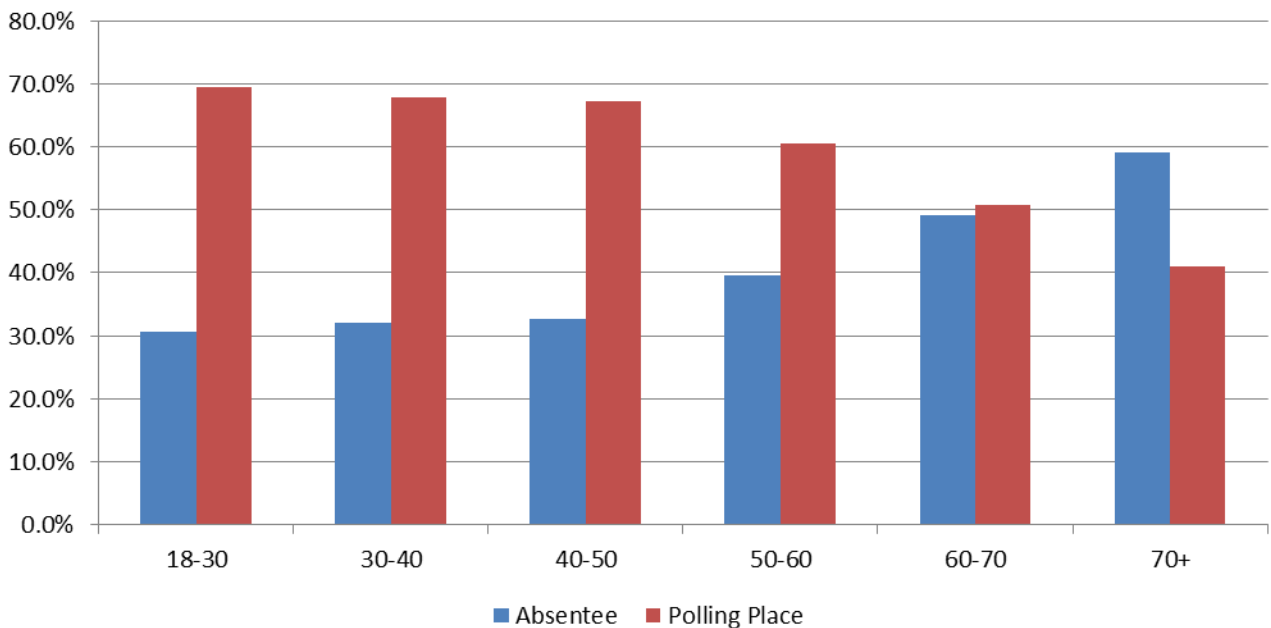
Voter Turnout By Age and Voting Method Merced County - November 2012



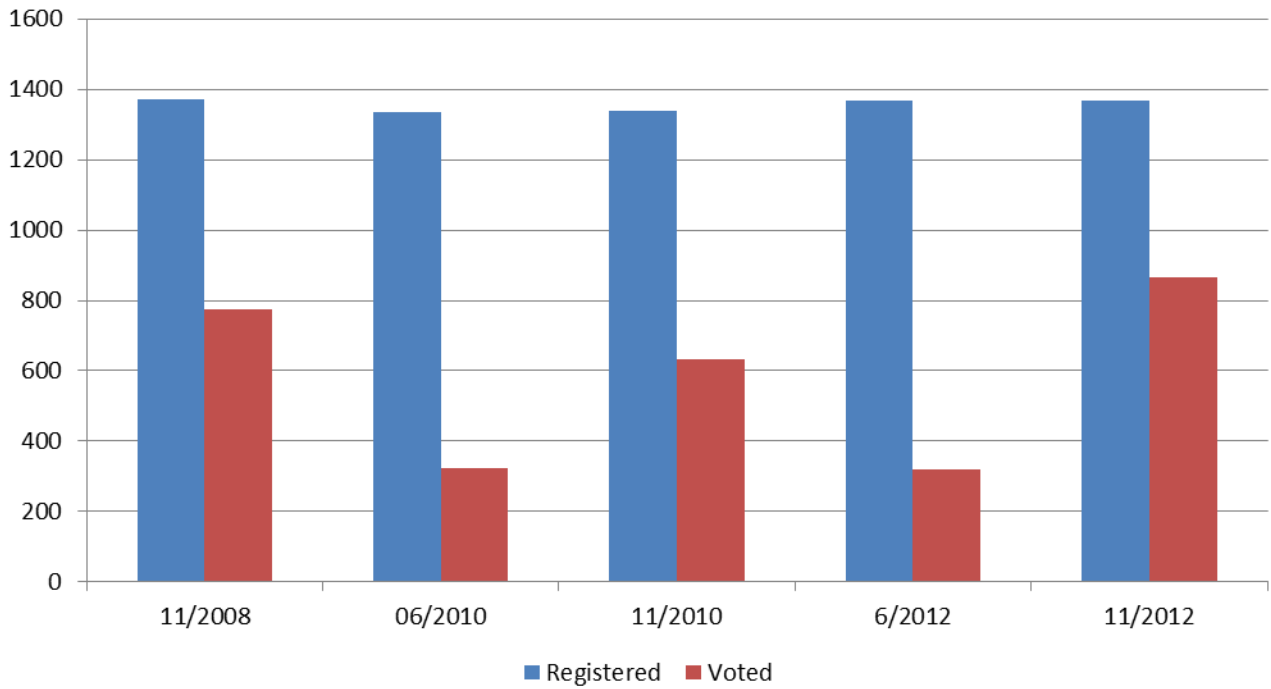
Voter Turnout By Age and Voting Method Casa dos Açores - November 2008



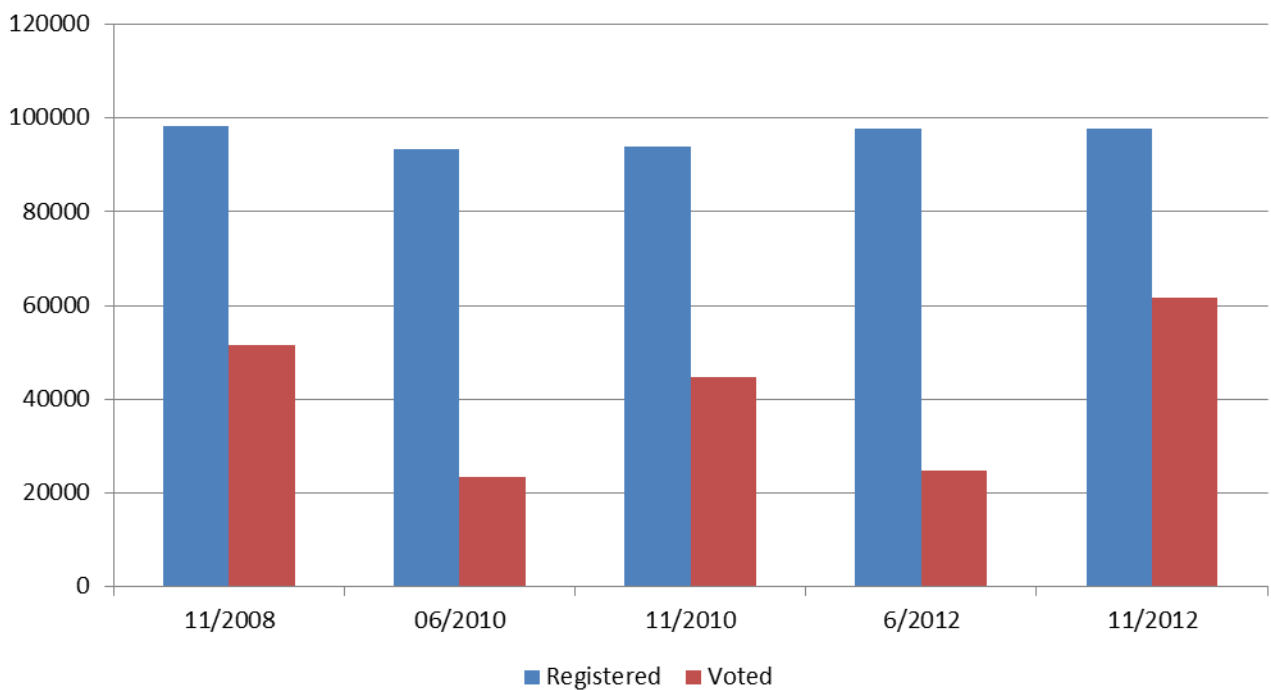
Voter Turnout By Age and Voting Method Merced County - November 2008



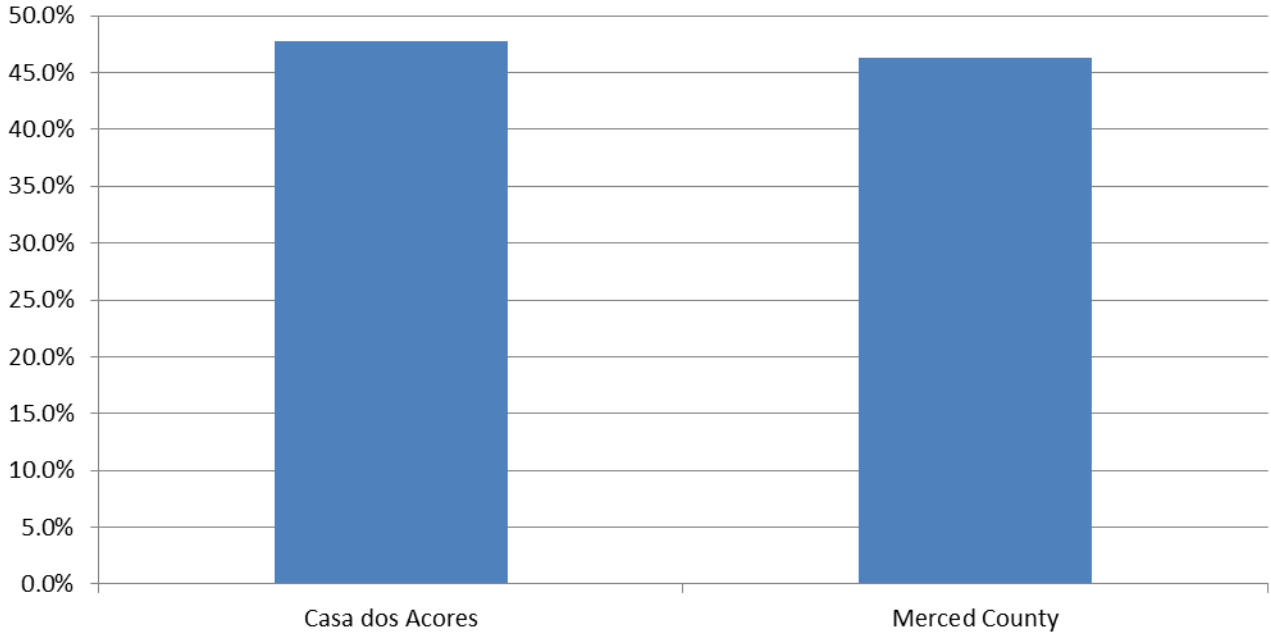
Registered Voters vs. Actual Voters Casa dos Açores - Atwater



Registered Voters vs. Actual Voters Merced County



Voter Turnout Voted in Both 2008 and 2012 Presidential Elections Casa dos Açores - Atwater vs. Merced County



Voter Turnout Voted in Last 3 Elections Casa dos Açores - Atwater vs. Merced County

